

1919 PENNSYLVANIA AVENUE NW

WASHINGTON, DC 20006

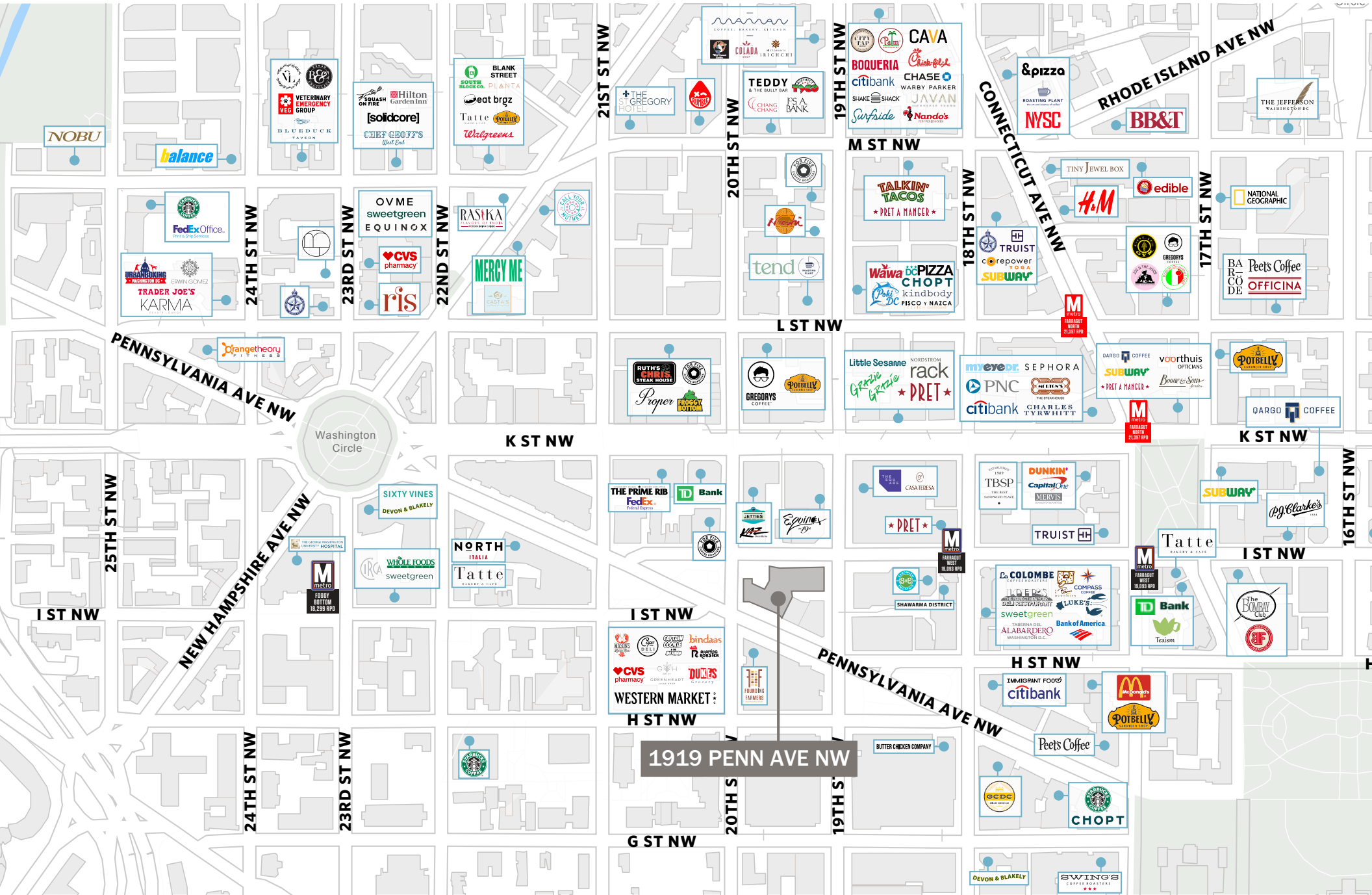
SAMPLE STOREFRONT UPGRADE
SW CORNER - 19TH & EYE



JENNIFER PRICE
202.420.7768
jprice@klnb.com

KIM STEIN
202.652.2338
kstein@klnb.com

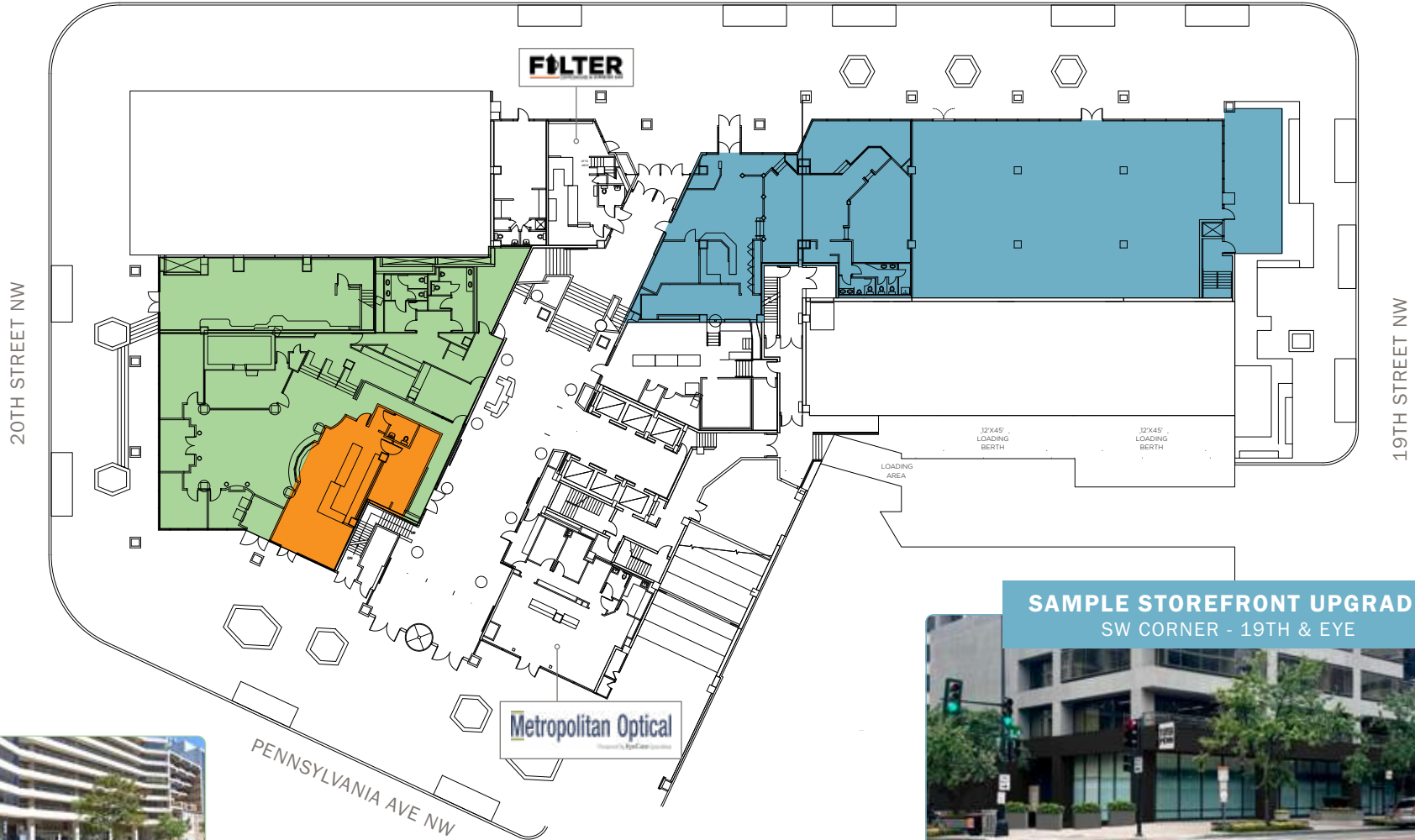
THE MARKET



1919 PENNSYLVANIA AVENUE NW

SITE PLAN | GROUND LEVEL

EYE STREET NW



- 6,323 SF
- Second generation bank
- Can be demised
- Ceiling Heights: 10' 6"

- 1,285 SF
- Second generation fast casual, non-vented
- Can be combined
- Ceiling Heights: 10' 6"



- 3,525 - 8,349 SF
- Vented with kitchen infrastructure
- Ceiling Heights: 14'-10" - 15'-12"

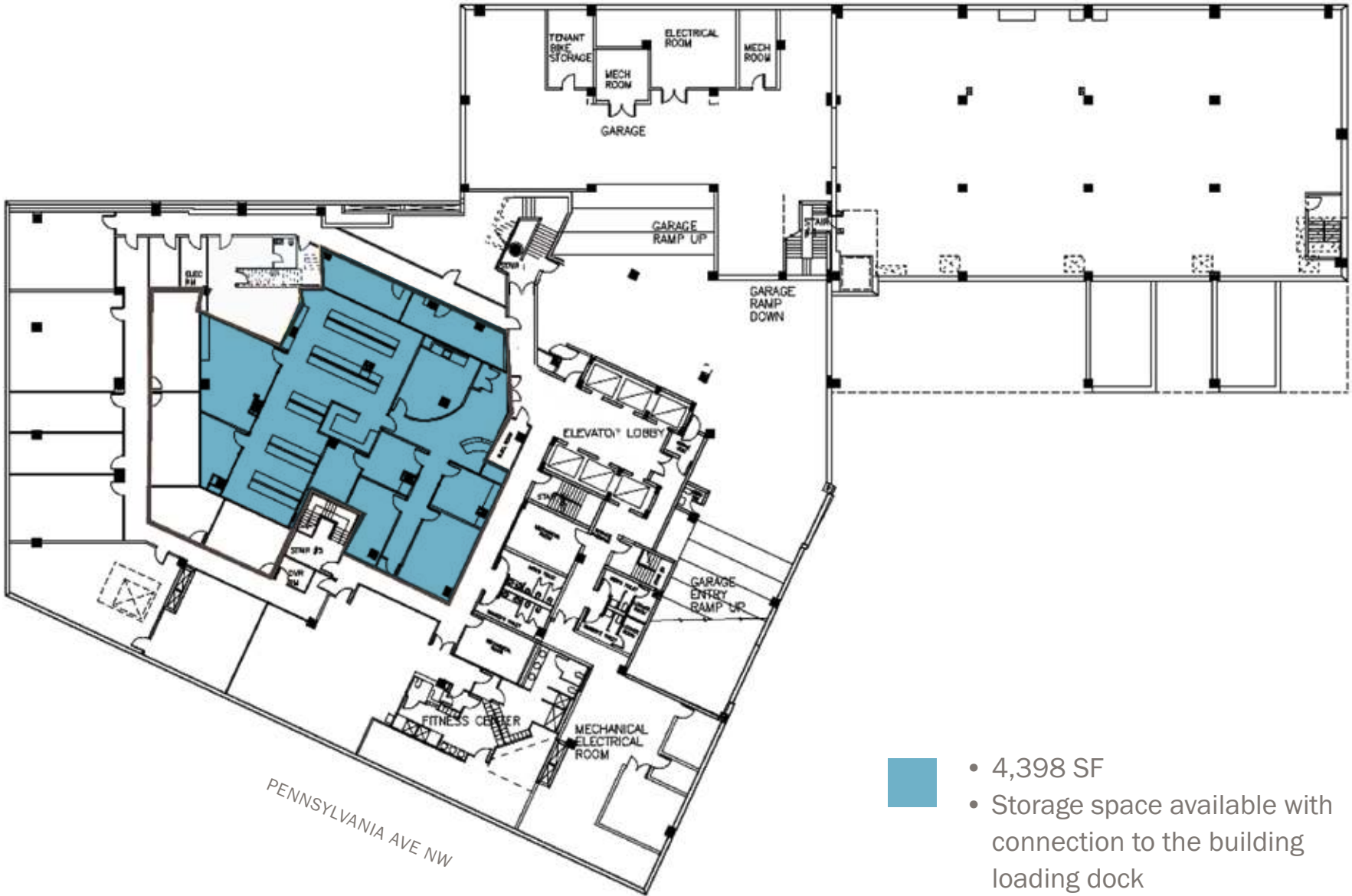
1919 PENNSYLVANIA AVENUE NW

SITE PLAN | LOWER LEVEL

EYE STREET NW

20TH STREET NW

19TH STREET NW



- 4,398 SF
- Storage space available with connection to the building loading dock

1919 PENNSYLVANIA AVENUE NW

1919 PENNSYLVANIA AVENUE NW

WASHINGTON, DC 20006

FOR INQUIRES CONTACT

JENNIFER PRICE | 202.420.7768 | jprice@klnb.com

KIM STEIN | 202.652.2338 | kstein@klnb.com