



AVAILABILITY

- 5606 - 2,200 SF
- 5612-14 - 4,208 SF
- 5616-18 - 4,400 SF

PROPERTY HIGHLIGHTS

- 2,200 - 8,608 SF flex spaces available
- Grocery anchored center, just off Rockville Pike
- Ample surface parking

MARKET

MONTROSE SHOPPING CENTER

5636 - 5520 RANDOLPH ROAD, ROCKVILLE, MARYLAND 20852



ROCKVILLE

NORTH BETHESDA

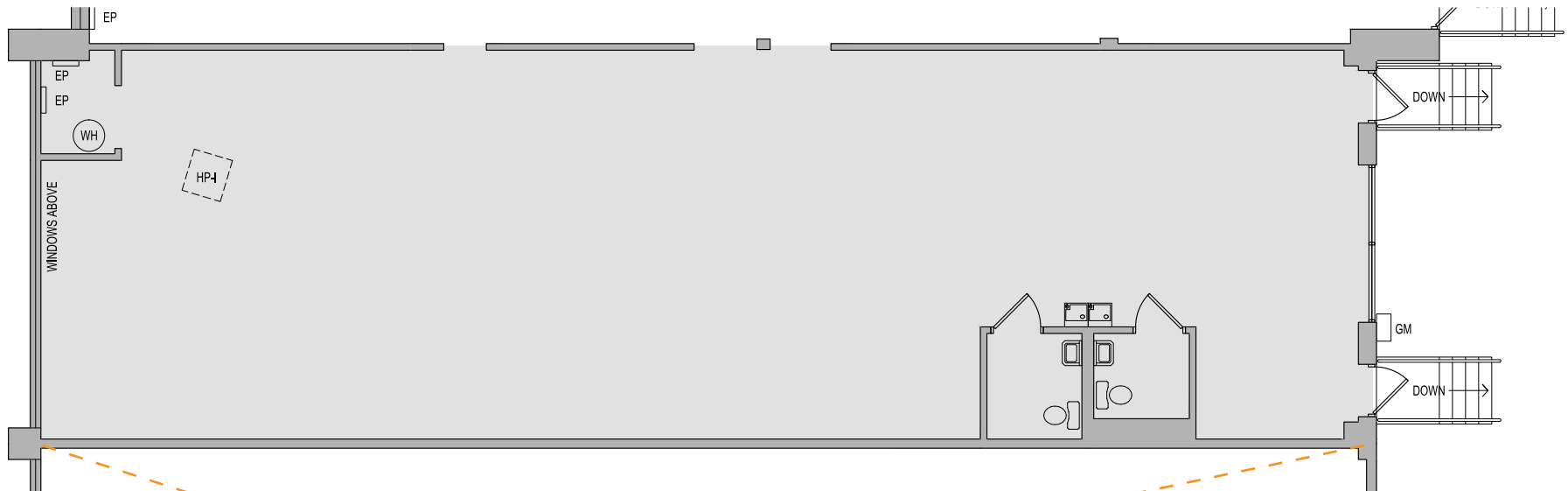
KENNETH FELLOWS
kfellows@klnb.com | 301-222-0210

ROBERT PUGH
rpugh@klnb.com | 301-222-0211

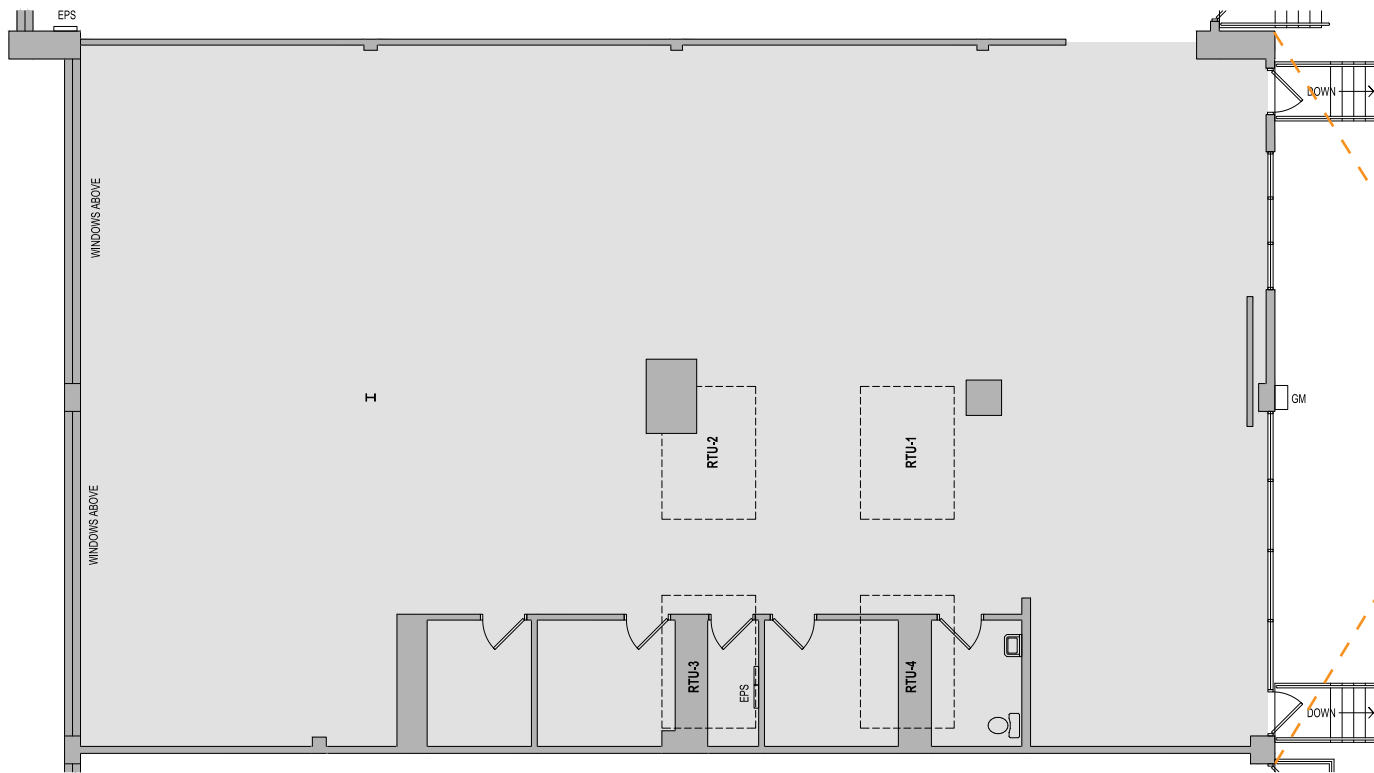
KEIRY MARTINEZ
kmartinez@klnb.com | 703-334-5629



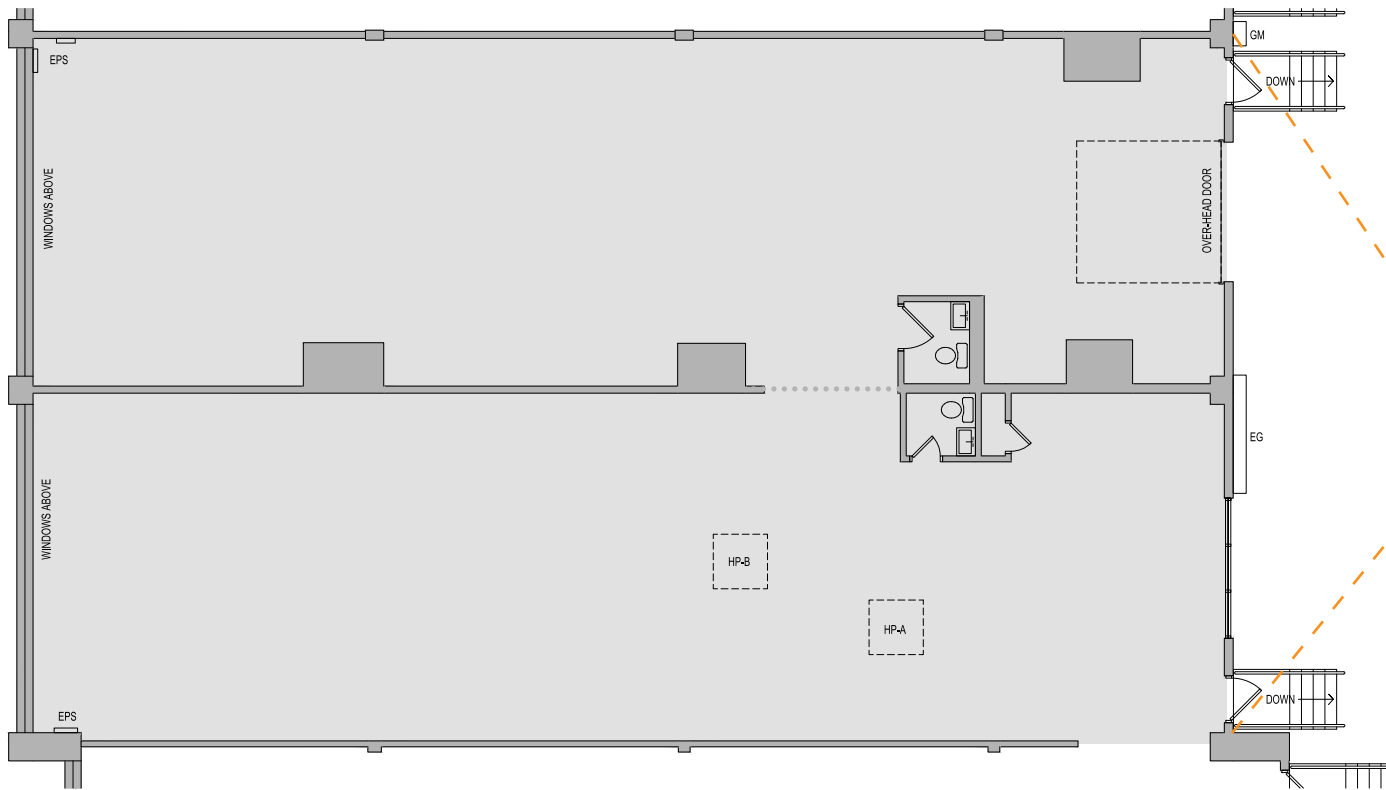
SUITE 5606 - 2,200 SF



SUITE 5612-14 - 4,208 SF



SUITE 5616-18 - 2,200 SF UP TO 4,400 SF



FLOOR PLAN

MONTROSE SHOPPING CENTER

5636 - 5520 RANDOLPH ROAD, ROCKVILLE, MARYLAND 20852



SUITE 5612



SUITE 5612

KENNETH FELLOWS

kfellows@klnb.com | 301-222-0210

ROBERT PUGH

rpugh@klnb.com | 301-222-0211

KEIRY MARTINEZ

kmartinez@klnb.com | 703-334-5629



FLOOR PLAN

MONTROSE SHOPPING CENTER

5636 - 5520 RANDOLPH ROAD, ROCKVILLE, MARYLAND 20852



SUITE 5606



SUITE 5616

KENNETH FELLOWS

kfellows@klnb.com | 301-222-0210

ROBERT PUGH

rpugh@klnb.com | 301-222-0211

KEIRY MARTINEZ

kmartinez@klnb.com | 703-334-5629





MONTROSE SHOPPING CENTER

5636 - 5520 RANDOLPH ROAD, ROCKVILLE, MARYLAND 20852

FOR MORE INFORMATION, PLEASE CONTACT:

KENNETH FELLOWS

kfellows@klnb.com
301-222-0210

ROBERT PUGH

rpugh@klnb.com
301-222-0211

KEIRY MARTINEZ

kmartinez@klnb.com
703-334-5629

2273 Research Boulevard, Suite 150, Rockville, MD 20850

.....

klnb.com

 facebook.com/KLNBCRE

 linkedin.com/company/klnb

 instagram.com/klnbcre

CLICK TO VIEW PROPERTY WEBSITE

While we have no reason to doubt the accuracy of any of the information supplied, we cannot, and do not, guarantee its accuracy. All information should be independently verified prior to a purchase or lease of the property. We are not responsible for errors, omissions, misuse, or misinterpretation of information contained herein and make no warranty of any kind, express or implied, with respect to the property or any other matters.