

RUMSEY BUSINESS CENTER

9130 Red Branch Road & 9150, 9151, 9160, 9180 Rumsey Road
Columbia, MD 21045 | Howard County



FOR LEASE

AVAILABILITIES

- **9151 Rumsey Road**
 - » Suite 100-1: 8,410 SF Office
- **9160 Rumsey Road**
 - » Suite B5: 3,762 SF; 1 Drive-In

- Conveniently located near Downtown Columbia
- Easy access to I-95, Route 29, and Route 32
- Minutes away from Columbia Mall, Howard Community College, Howard County General Hospital, Fort Meade & BWI Airport
- 10' x 12' at-grade drive-ins; Wet sprinkler
- Zoning: M1-NT
- Ceiling Heights: 14' x 16'
- Columns: 30'-33'w x 42'd
- Ample parking

NEARBY AMENITIES



Spence Daw
sdaw@klnb.com
443-574-1429

Steele Stanwick
sstanwick@klnb.com
443-574-1420

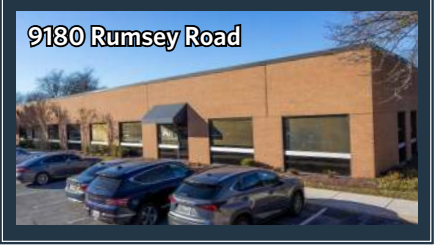
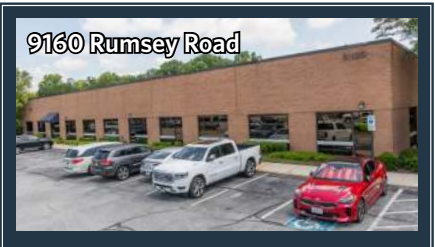
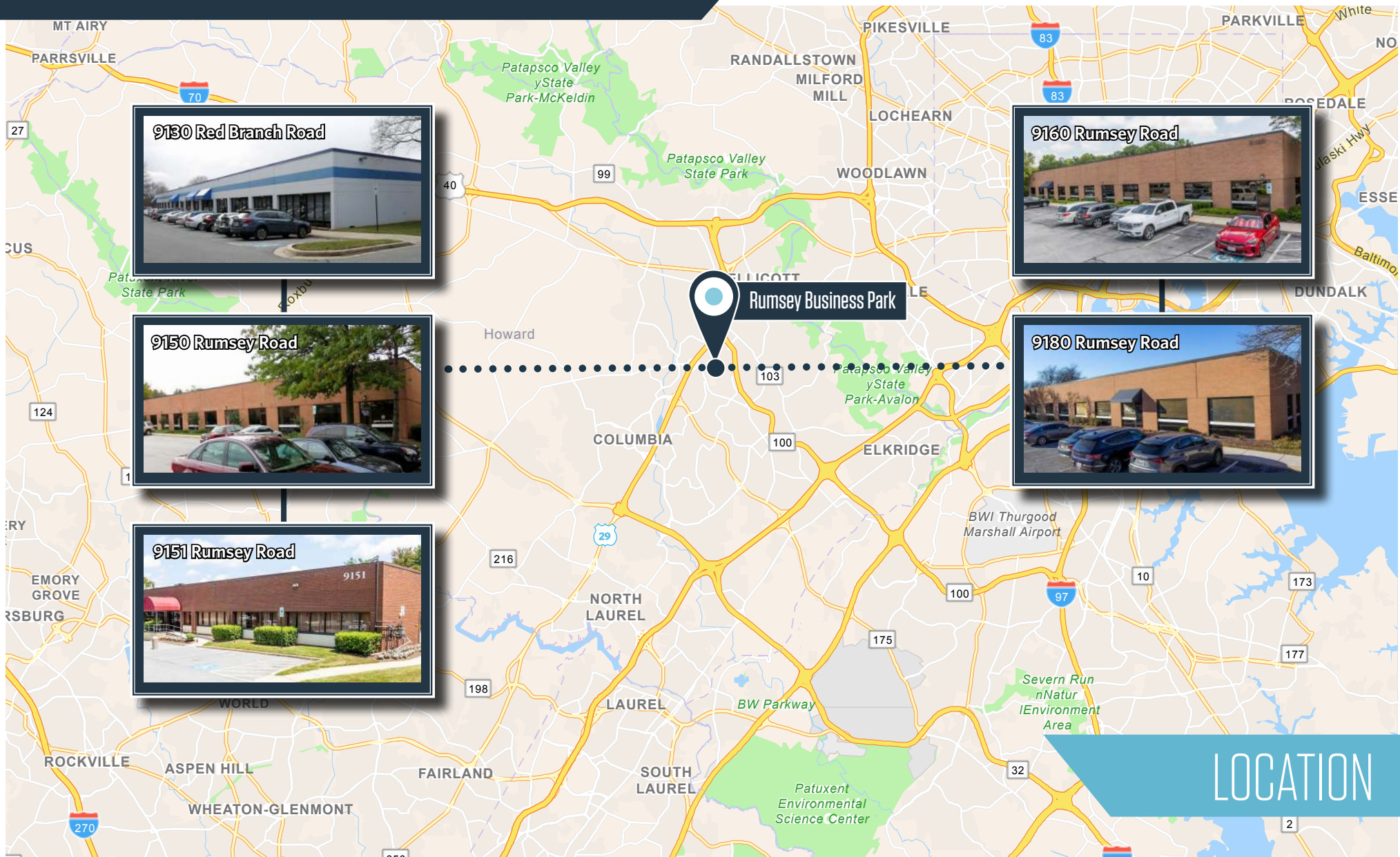
David J. Fritz, CCIM, SIOR
dfritz@klnb.com
443-574-14120

9881 Broken Land Pkwy, #300
Columbia, MD 21043
klnb.com



RUMSEY BUSINESS CENTER

9130 Red Branch Road & 9150, 9151, 9160, 9180 Rumsey Road
Columbia, MD 21045 | Howard County



LOCATION

Spence Daw
sdaw@klnb.com
443-574-1429

Steele Stanwick
sstanwick@klnb.com
443-574-1420

David J. Fritz, CCIM, SIOR
dfritz@klnb.com
443-574-14120

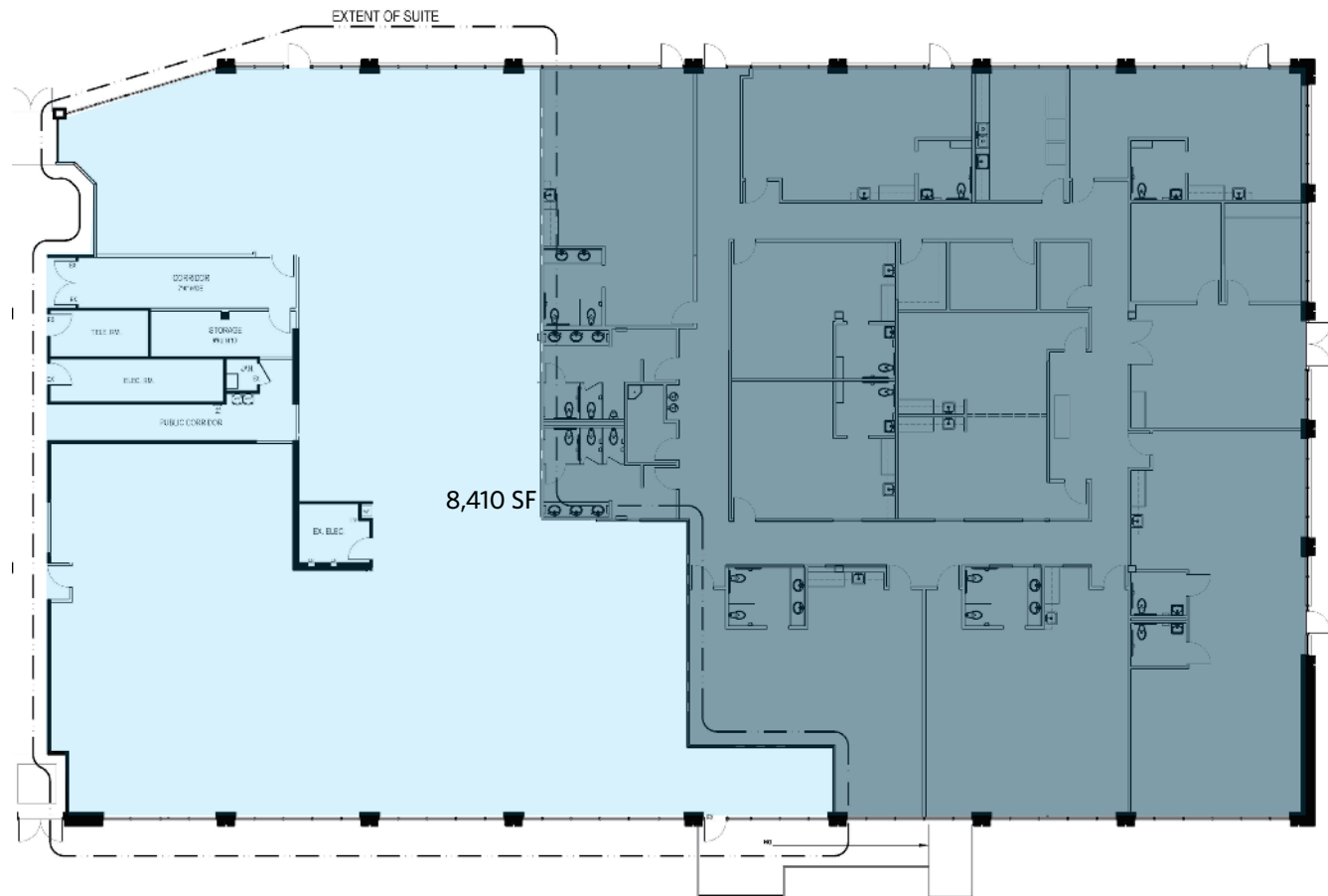
9881 Broken Land Pkwy, #300
Columbia, MD 21043
klnb.com



RUMSEY BUSINESS CENTER

9130 Red Branch Road & 9150, 9151, 9160, 9180 Rumsey Road
Columbia, MD 21045 | Howard County

9151 Rumsey Road
SUITE 100-1
8,410 SF



Spence Daw
sdaw@klnb.com
443-574-1429

Steele Stanwick
sstanwick@klnb.com
443-574-1420

David J. Fritz, CCIM, SIOR
dfritz@klnb.com
443-574-14120

9881 Broken Land Pkwy, #300
Columbia, MD 21043
klnb.com

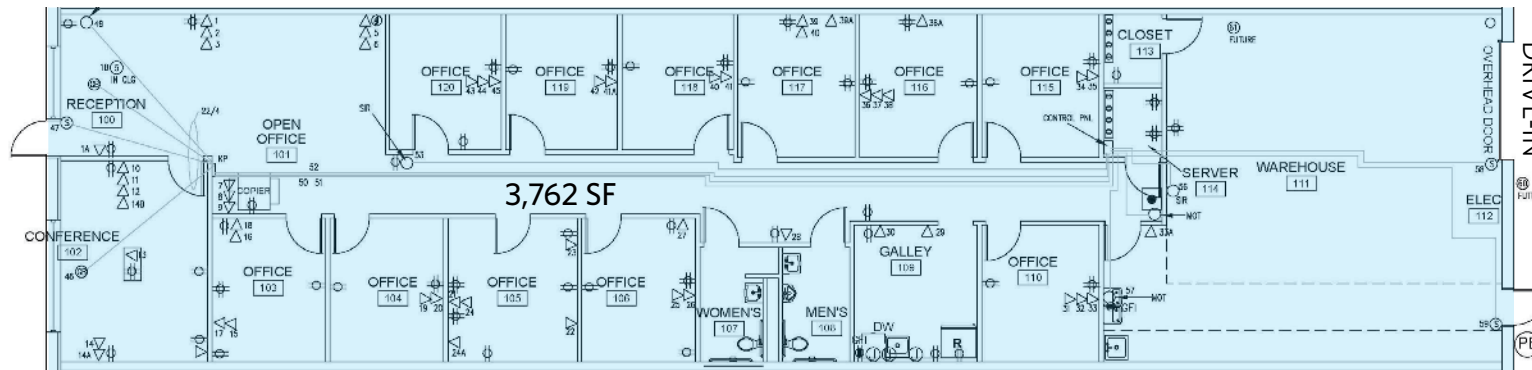


RUMSEY BUSINESS CENTER

9130 Red Branch Road & 9150, 9151, 9160, 9180 Rumsey Road
Columbia, MD 21045 | Howard County

9160 Rumsey Road
SUITE B5
3,762 SF

- » One (1) drive-in
- » 200 amps at 120/208 volt
3 phase, 4 wire power



Spence Daw
sdaw@klnb.com
443-574-1429

Steele Stanwick
sstanwick@klnb.com
443-574-1420

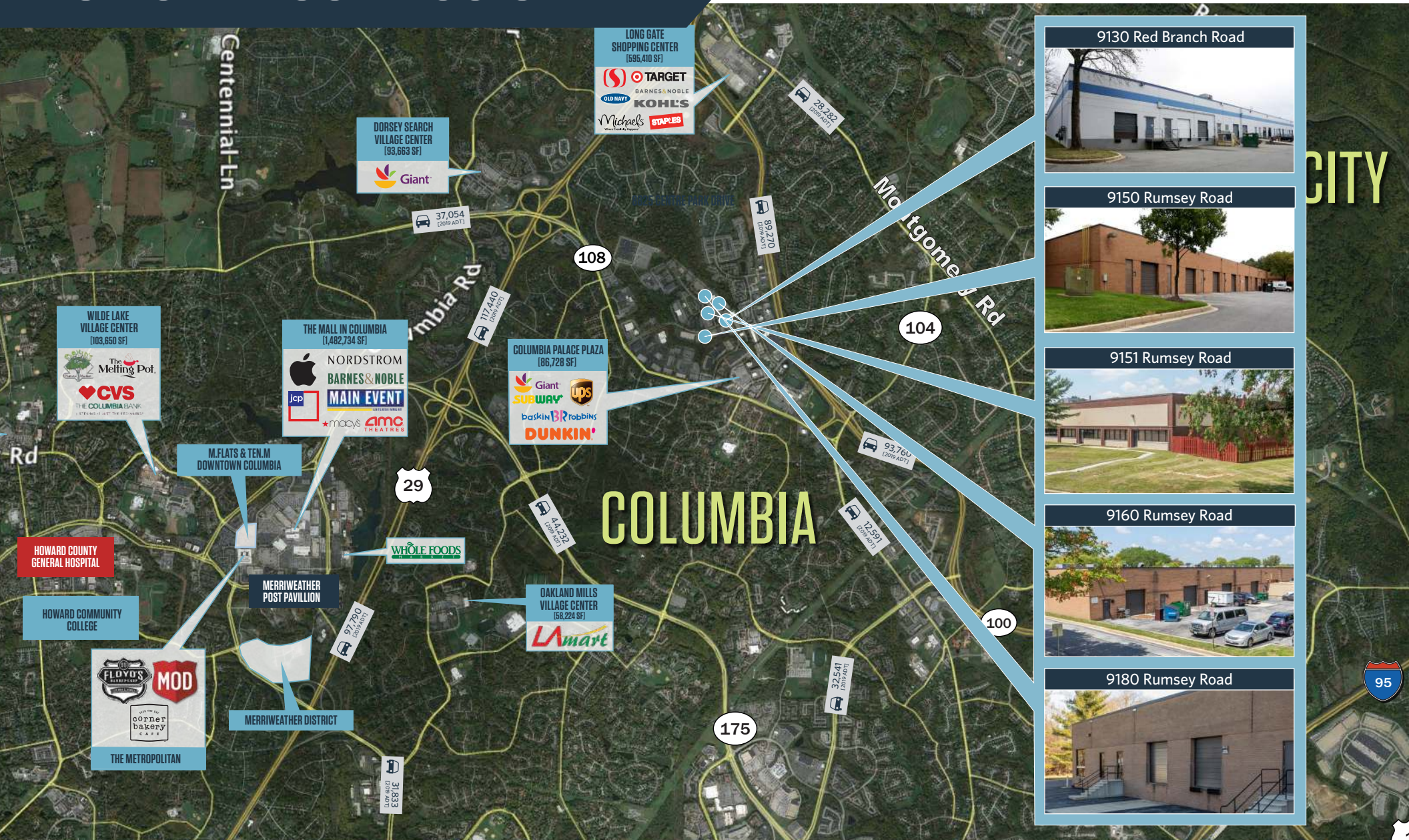
David J. Fritz, CCIM, SIOR
dfritz@klnb.com
443-574-14120

9881 Broken Land Pkwy, #300
Columbia, MD 21043
klnb.com



RUMSEY BUSINESS CENTER

9130 Red Branch Road & 9150, 9151, 9160, 9180 Rumsey Road
Columbia, MD 21045 | Howard County



Spence Daw
sdaw@klnb.com
443-574-1429

Steele Stanwick
sstanwick@klnb.com
443-574-1420

David J. Fritz, CCIM, SIOR
dfritz@klnb.com
443-574-14120

9881 Broken Land Pkwy, #300
Columbia, MD 21043
klnb.com



RUMSEY BUSINESS CENTER

9130 Red Branch Road & 9150, 9151, 9160, 9180 Rumsey Road
Columbia, MD 21045 | Howard County

[CLICK TO VIEW PROPERTY WEBSITE](#)

For More Information, Please Contact:

Spence Daw

sdaw@klnb.com
443-574-1429

Steele Stanwick

sstanwick@klnb.com
443-574-1420

David J. Fritz, CCIM, SIOR

dfritz@klnb.com
443-574-1410

9881 Broken Land Parkway, Suite 300
Columbia, MD 21046

klnb.com



[instagram.com/klnbcre](https://www.instagram.com/klnbcre)



[linkedin.com/company/klnb](https://www.linkedin.com/company/klnb)



[facebook.com/KLNBcre](https://www.facebook.com/KLNBcre)

While we have no reason to doubt the accuracy of any of the information supplied, we cannot, and do not, guarantee its accuracy. All information should be independently verified prior to a purchase or lease of the property. We are not responsible for errors, omissions, misuse, or misinterpretation of information contained herein and make no warranty of any kind, express or implied, with respect to the property or any other matters.

