



FOR LEASE

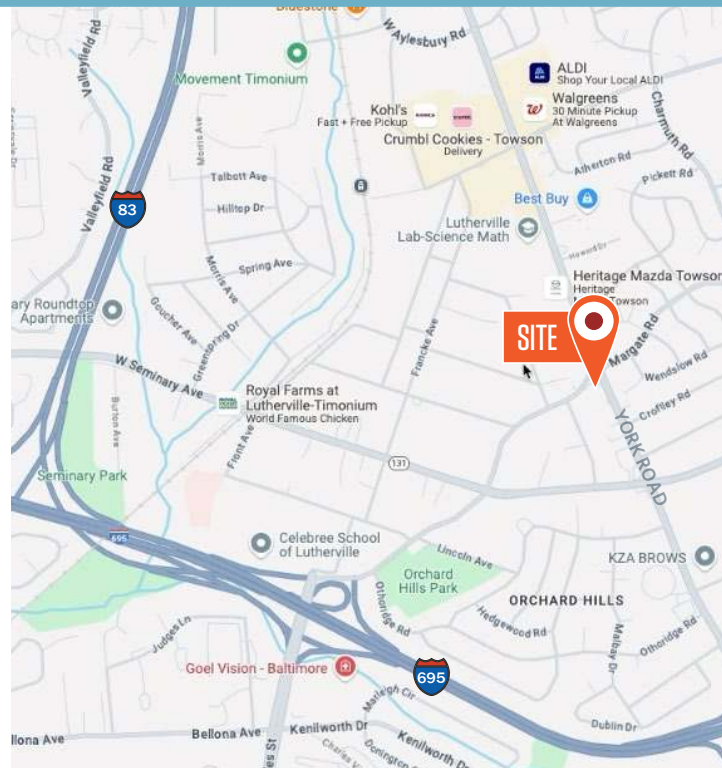
PROPERTY HIGHLIGHTS:

- **Available Space:** 2,000 SF Lower Level
- **Parking:** Ample and free parking
- **Signage:** Pylon signage available
- **Visibility:** Great visibility & access from York Road
- **Traffic Count:** Over 36,110 ADT
- **Access:** Nearby access to I-83 and I-695

NEARBY AMENITIES



LIBERATORE'S



Austin Eber
aeber@klnb.com
443-574-1414

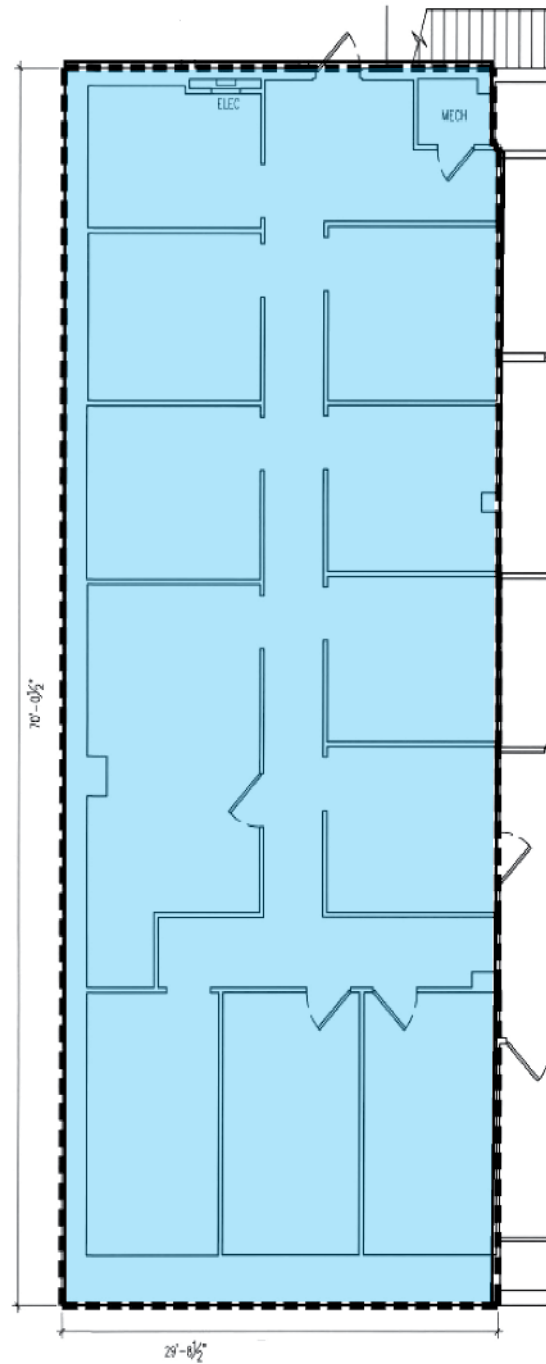
Colin McGonigal
cmcgonigal@klnb.com
443-632-2083

9881 Broken Land Pkwy, #300
Columbia, MD 21046
klnb.com

1544 YORK ROAD

Lutherville, MD 21093 | Baltimore County

LOWER LEVEL | 2,000 SF



Austin Eber
aeber@klnb.com
443-574-1414

Colin McGonigal
cmcgonigal@klnb.com
443-632-2083

MARKET AERIAL



While we have no reason to doubt the accuracy of any of the information supplied, we cannot, and do not, guarantee its accuracy. All information should be independently verified prior to a purchase or lease of the property. We are not responsible for errors, omissions, misuse, or misinterpretation of information contained herein and make no warranty of any kind, express or implied, with respect to the property or any other matters.

9881 Broken Land Pkwy, #300
Columbia, MD 21046
klnb.com

1544 YORK ROAD

Lutherville, MD 21093 | Baltimore County



CLICK TO VIEW PROPERTY WEBSITE

For More Information, Please Contact:

Austin Eber

aeber@klnb.com

443-574-1414

Colin McGonigal

cmcgonigal@klnb.com

443-632-2083

9881 Broken Land Parkway, Suite 300
Columbia, MD 21046

klnb.com



[instagram.com/klnbcre](https://www.instagram.com/klnbcre)



[linkedin.com/company/klnb](https://www.linkedin.com/company/klnb)



[facebook.com/KLNBCRE](https://www.facebook.com/KLNBCRE)

While we have no reason to doubt the accuracy of any of the information supplied, we cannot, and do not, guarantee its accuracy. All information should be independently verified prior to a purchase or lease of the property. We are not responsible for errors, omissions, misuse, or misinterpretation of information contained herein and make no warranty of any kind, express or implied, with respect to the property or any other matters.

