



2 CREAMERY WAY

2 CREAMERY WAY EMMITSBURG, MD 21727



FOR LEASE

AVAILABILITY

14,650 SF Total

- 11,405 SF Warehouse
- 3,245 SF Office

Free standing industrial property with secured outdoor storage.

\$14/NNN

KENNETH FELLOWS

kfellows@klnb.com | 301-222-0210

ROBERT PUGH

rpugh@klnb.com | 301-222-0211

KEIRY MARTINEZ

kmartinez@klnb.com | 703-334-5629

JACKIE MCGAUGHEY

jmcgaughey@klnb.com | 301.264.8820



PROPERTY HIGHLIGHTS

This industrial property is comprised of warehouse space and is equipped with front office space that is usable for tenants. Conveniently located only 0.2 miles off Rt. 15, this property provides easy access to Rt.15, I-70, and I-270.

- 11,405 SF Warehouse
- 3,245 SF Office
- 4.41 Acres fenced yard with pole barn

WAREHOUSE	
Building Size	14,650 SF 11,405 - Warehouse 3,245 - Office
Water	City
Sewer	City
Gas	Natural
Power Supply	Phase 3
Drive Ins	7 Total
Zoning	Industrial Park (IP)/ Light Industrial, Town of Emmitsburg

AMENITIES
Outdoor Storage Space
Fenced Lot
Shallow Bay
Mezzanine

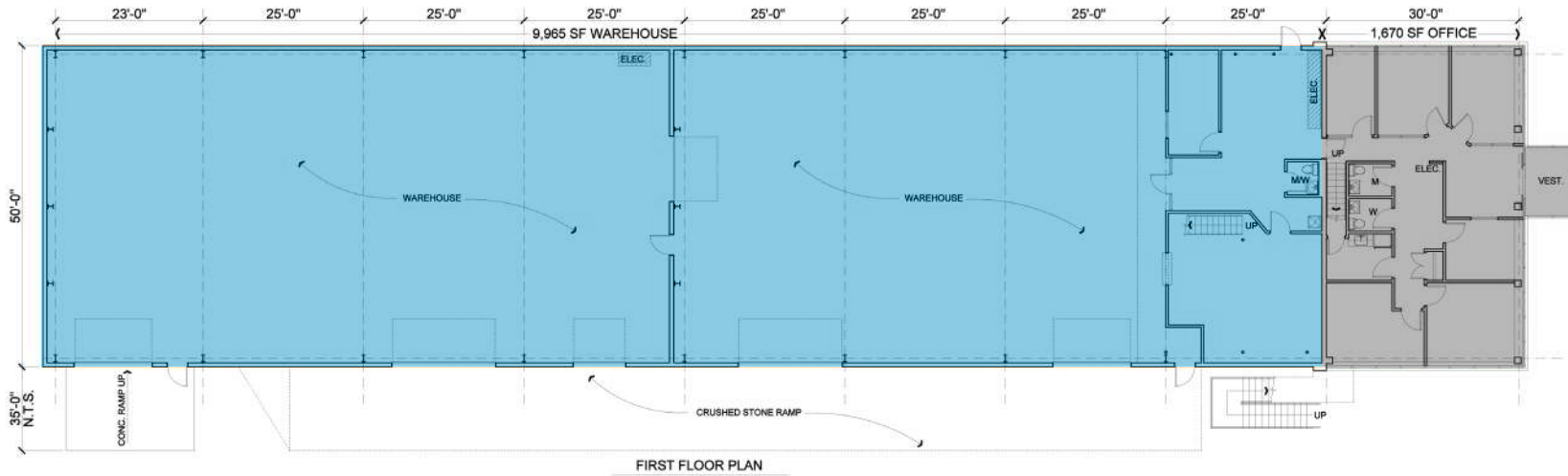
FLOOR PLAN

2 CREAMERY WAY

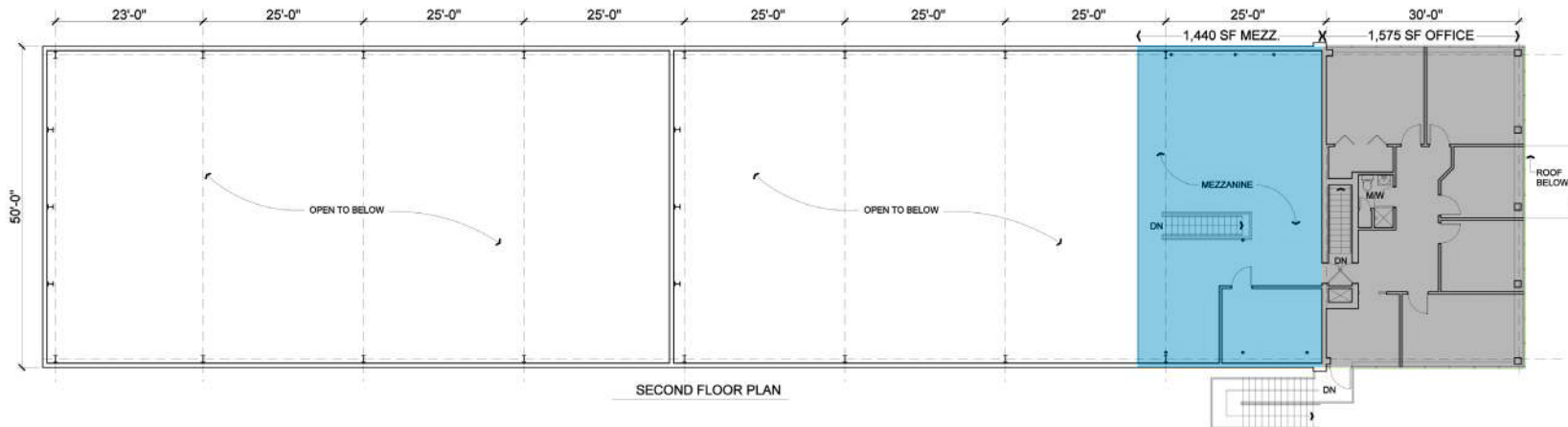
2 CREAMERY WAY EMMITSBURG, MD 21727



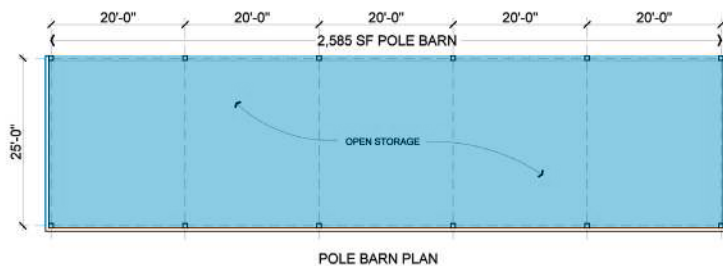
First Floor



Second Floor



Pole Barn



KENNETH FELLOWS

kfellows@klnb.com | 301-222-0210

ROBERT PUGH

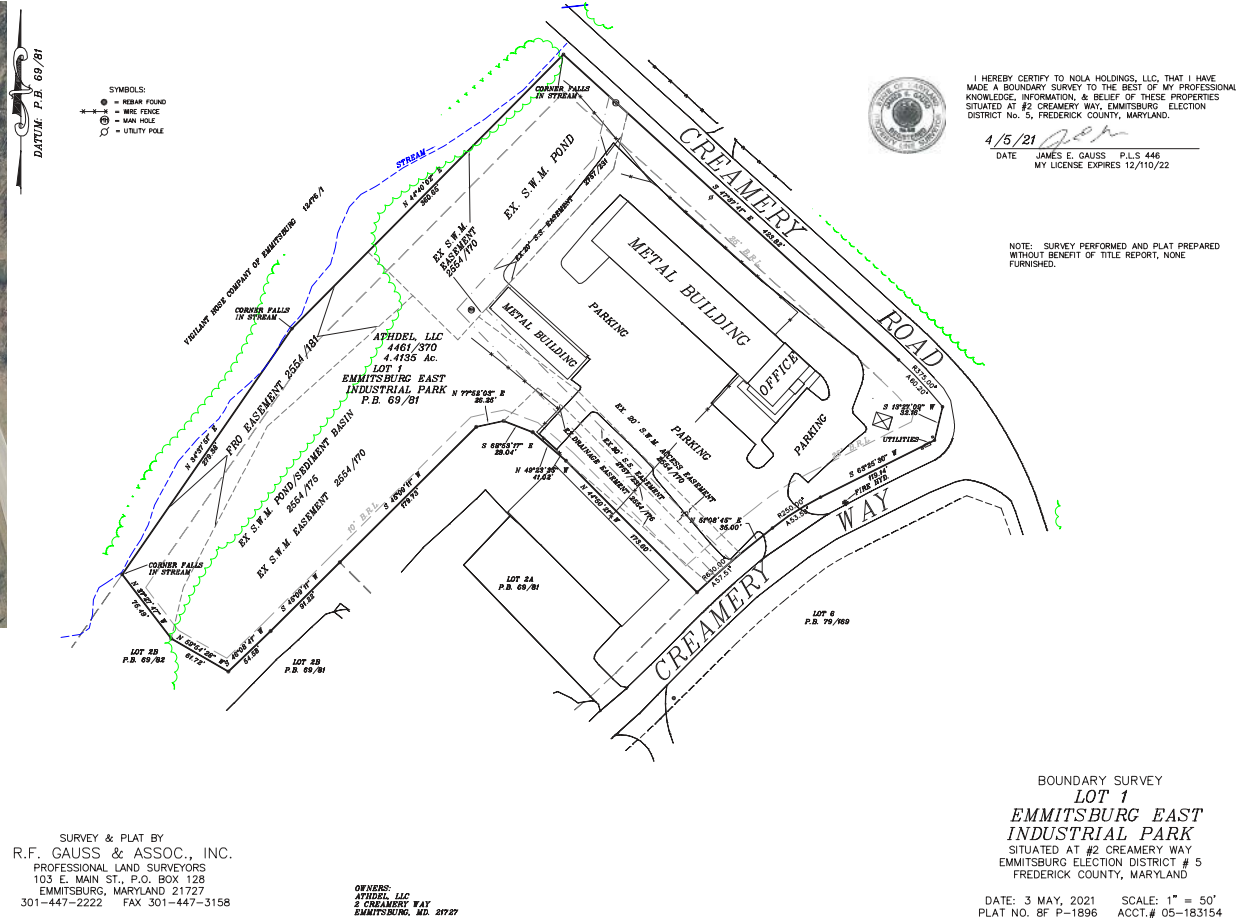
rpugh@klnb.com | 301-222-0211

KEIRY MARTINEZ

kmartinez@klnb.com | 703-334-5629

JACKIE MCGAUGHEY

jmcgaughey@klnb.com | 301.264.8820



LAND

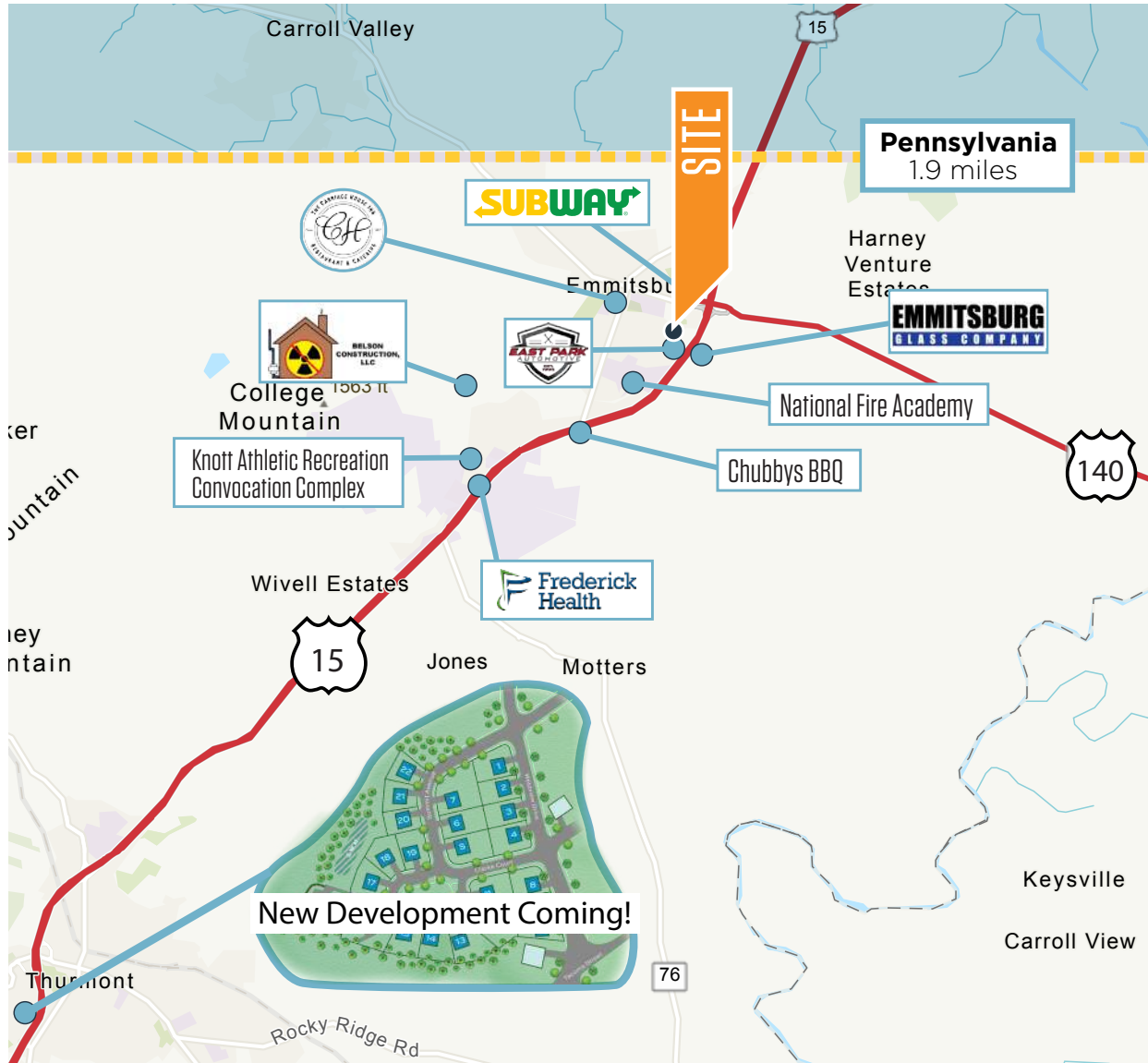
Land Acres: 4.41 AC

KENNETH FELLOWS
kfellows@klnb.com | 301-222-0210

ROBERT PUGH
rpugh@klnb.com | 301-222-0211

KEIRY MARTINEZ
kmartinez@klnb.com | 703-334-5629

JACKIE MCGAUGHEY
jmcgaughey@klnb.com | 301.264.8820



Transportation

Distance to Highway	
Route 15	0.2 miles
Route 40	8.6 miles
I-70	25 miles
I-270	25 miles
I-81	34 miles

Commuter Rail	
MARC Station	24.7 miles

Airport	
Fredrick Municipal	24.1 miles
Hagerstown Regional	27.3 miles
Baltimore/Washington International	57.4 miles
Dulles International	64.8 miles
Ronald Reagan Washington	73.7 miles

Distance to Cities	
Pennsylvania	1.9 miles
Frederick	17 miles
Hagerstown	23 miles
Baltimore	45 miles
Washington, DC	62 miles

KENNETH FELLOWS

kfellows@klnb.com | 301-222-0210

ROBERT PUGH

rpugh@klnb.com | 301-222-0211

KEIRY MARTINEZ

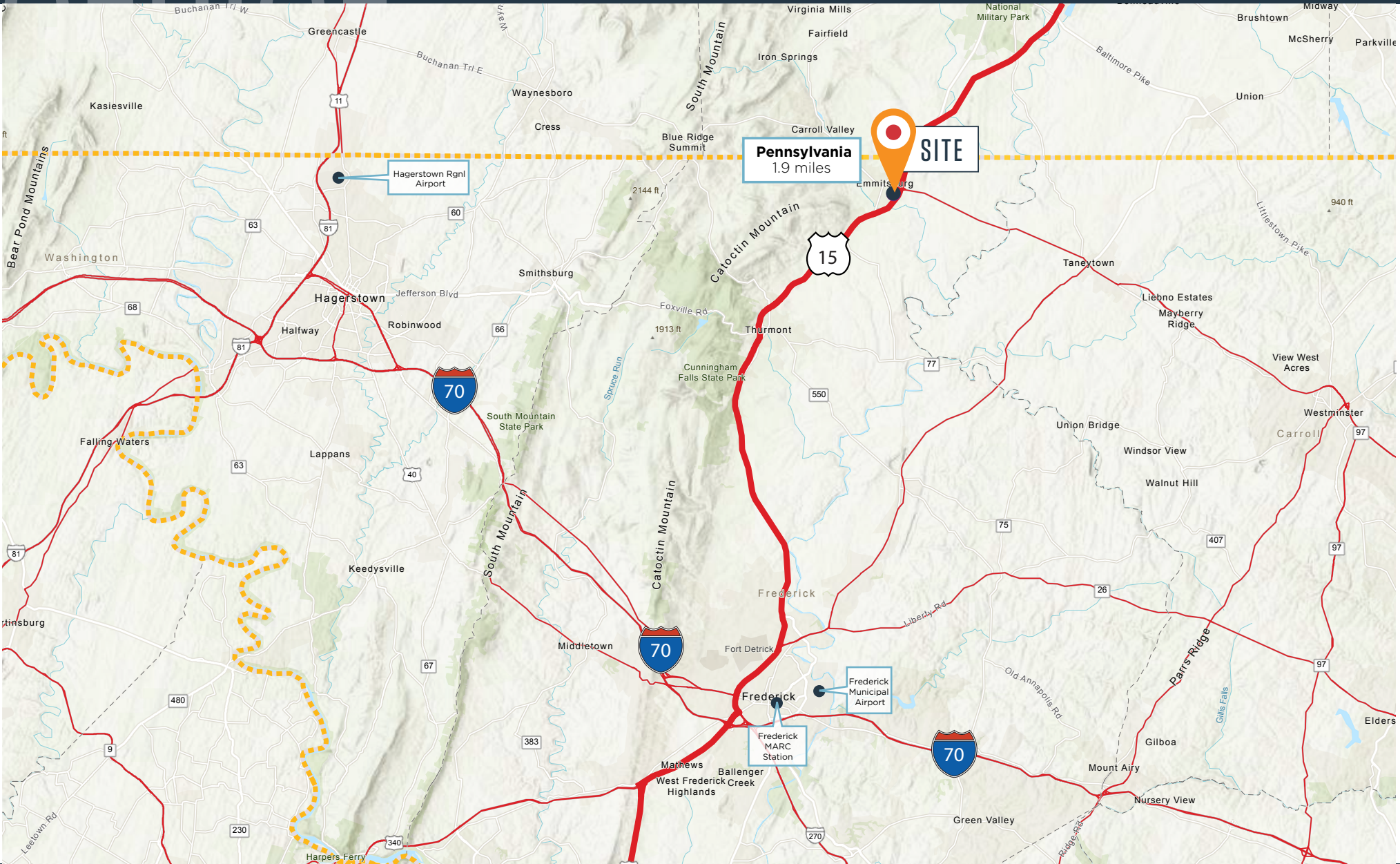
kmartinez@klnb.com | 703-334-5629

JACKIE MCGAUGHEY

jmcgaughey@klnb.com | 301.264.8820

2 CREAMERY WAY

2 CREAMERY WAY EMMITSBURG, MD 21727



KENNETH FELLOWS

kfellows@klnb.com | 301-222-0210

ROBERT PUGH

rpugh@klnb.com | 301-222-0211

KEIRY MARTINEZ

kmartinez@klnb.com | 703-334-5629

JACKIE MCGAUGHEY

jmcgaughey@klnb.com | 301.264.8820



KENNETH FELLOWS
kfellows@klnb.com | 301-222-0210

ROBERT PUGH
rpugh@klnb.com | 301-222-0211

KEIRY MARTINEZ
kmartinez@klnb.com | 703-334-5629

JACKIE MCGAUGHEY
jmcaughey@klnb.com | 301.264.8820



KENNETH FELLOWS

kfellows@klnb.com | 301-222-0210

ROBERT PUGH

rpugh@klnb.com | 301-222-0211

KEIRY MARTINEZ

kmartinez@klnb.com | 703-334-5629

JACKIE MCGAUGHEY

jmcgaughey@klnb.com | 301.264.8820



2 CREAMERY WAY

2 CREAMERY WAY EMMITSBURG, MD 21727

FOR MORE INFORMATION, PLEASE CONTACT:

KENNETH FELLOWS

kfellows@klnb.com
301-222-0210

ROBERT PUGH

rpugh@klnb.com
301-222-0211

KEIRY MARTINEZ

kmartinez@klnb.com
703-334-5629

JACKIE MCGAUGHEY

jmcgaughey@klnb.com
301-264-8820

2273 Research Boulevard, Suite 150, Rockville, MD 20850

.....
klnb.com

 facebook.com/KLNBCRE

 linkedin.com/company/klnb

 instagram.com/klnbcre

CLICK TO VIEW PROPERTY WEBSITE

While we have no reason to doubt the accuracy of any of the information supplied, we cannot, and do not, guarantee its accuracy. All information should be independently verified prior to a purchase or lease of the property. We are not responsible for errors, omissions, misuse, or misinterpretation of information contained herein and make no warranty of any kind, express or implied, with respect to the property or any other matters.