

# MEADOWS CORPORATE PARK

Meadows II, III  
12501, 12520 Prosperity Dr, Silver Spring, MD 20904



## OFFICE SPACE FOR LEASE

### HIGHLIGHTS:

- Ideally located near Route 29, ICC, I-95 and I-495 with convenient access to Baltimore-Washington International airport.
- 6 minutes (1.6 mi.) to ICC | 7 minutes (2.6 mi.) to I-95 | 10 minutes (4.2 mi) to I-495
- Free surface parking.
- Adjacent retail centers, hotels and restaurants.
- Responsive local ownership and management.

OWNED BY:

**DSC Partners**

A Donatelli | Smith Capital Company

**Kenneth Fellows**  
kfellows@klnb.com  
301-222-0210

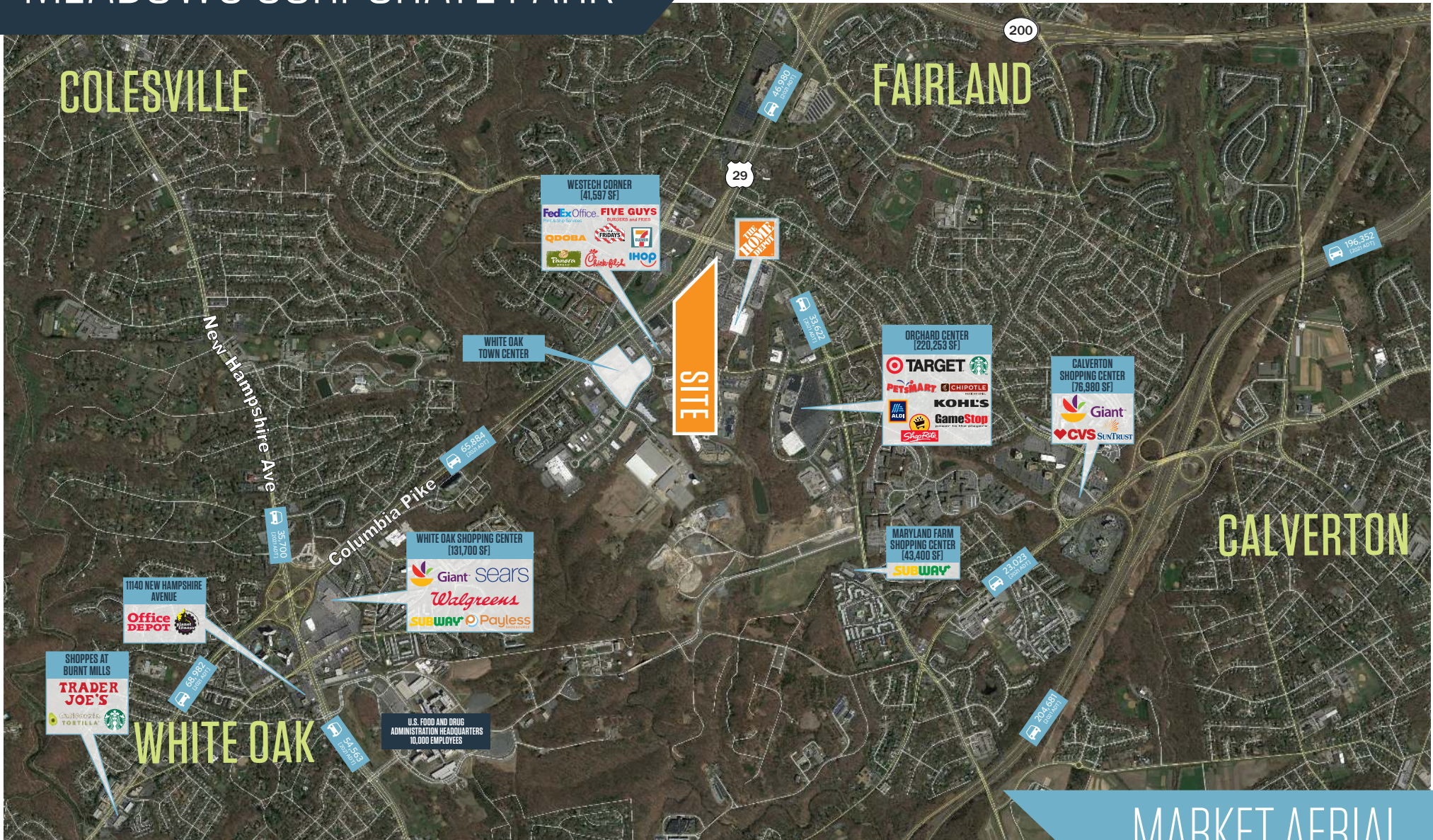
**Robert Pugh**  
rpugh@klnb.com  
301-222-0211

**Keiry Martinez**  
kmartinez@klnb.com  
703-334-5629

**klnb**

# MEADOWS CORPORATE PARK

Meadows II, III  
12501, 12520 Prosperity Dr, Silver Spring, MD 20904



MARKET AERIAL

**Kenneth Fellows**  
kfellows@klnb.com  
301-222-0210

**Robert Pugh**  
rpugh@klnb.com  
301-222-0211

**Keiry Martinez**  
kmartinez@klnb.com  
703-334-5629



# MEADOWS CORPORATE PARK

Meadows II, III  
12501, 12520 Prosperity Dr, Silver Spring, MD 20904



SITE AERIAL

Kenneth Fellows  
kfellows@klnb.com  
301-222-0210

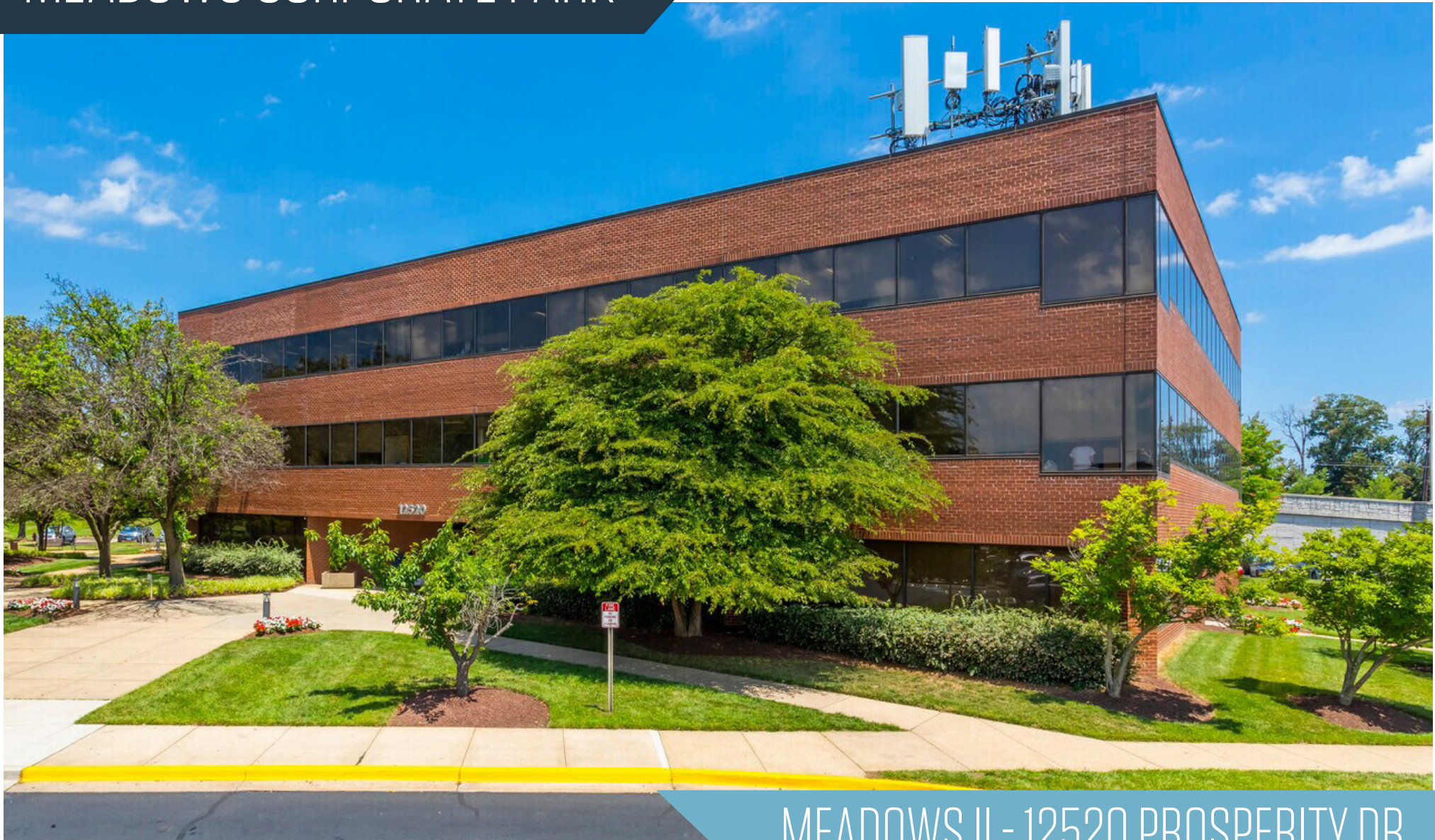
Robert Pugh  
rpugh@klnb.com  
301-222-0211

Keiry Martinez  
kmartinez@klnb.com  
703-334-5629



# MEADOWS CORPORATE PARK

Meadows II, III  
12501, 12520 Prosperity Dr, Silver Spring, MD 20904



MEADOWS II - 12520 PROSPERITY DR

**Kenneth Fellows**  
kfellows@klnb.com  
301-222-0210

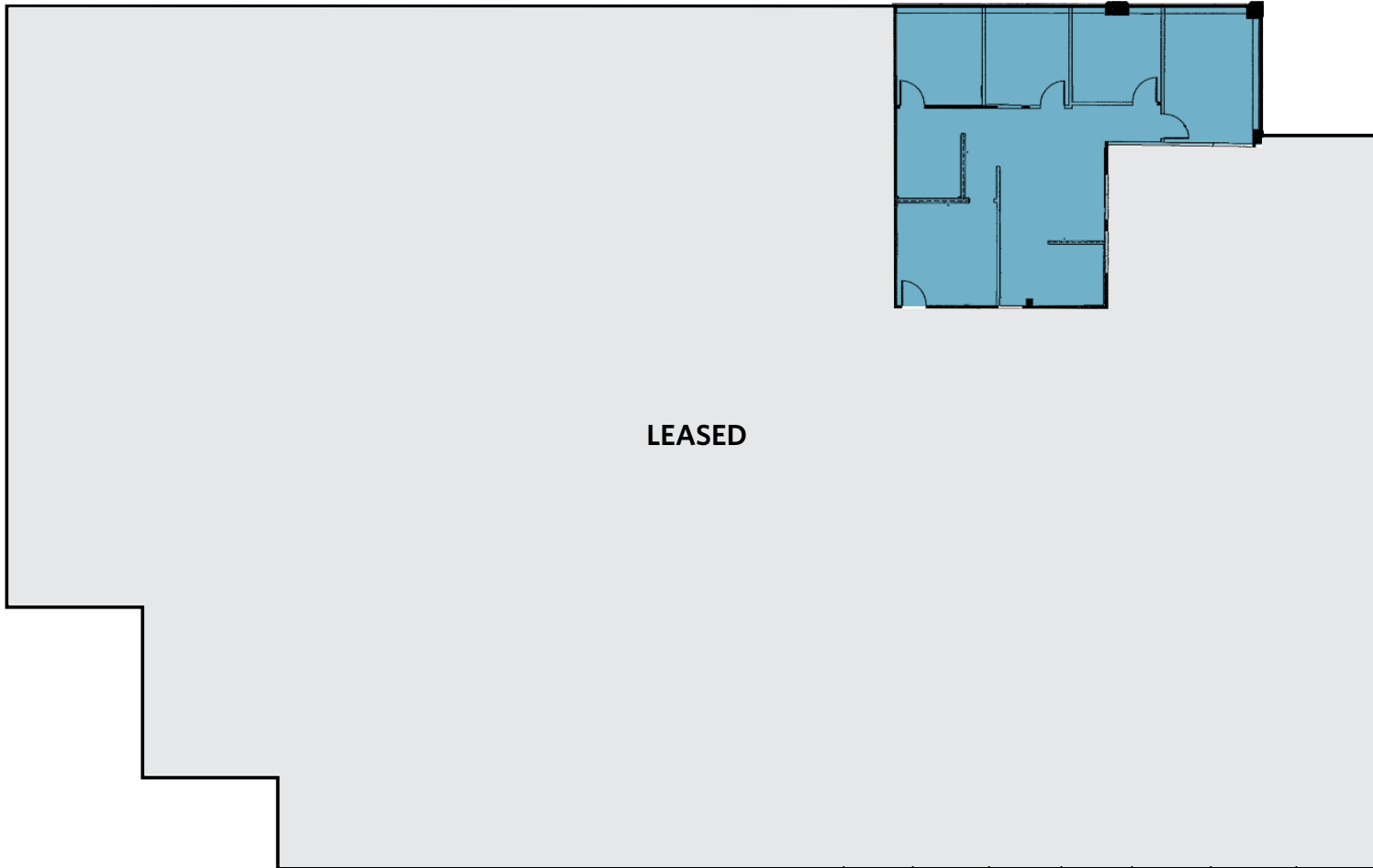
**Robert Pugh**  
rpugh@klnb.com  
301-222-0211

**Keiry Martinez**  
kmartinez@klnb.com  
703-334-5629

**klnb**

# MEADOWS CORPORATE PARK

Meadows II, III  
12501, 12520 Prosperity Dr, Silver Spring, MD 20904



## MEADOWS II

12520 PROSPERITY DR  
SILVER SPRING, MD

■ Suite 175 | 1,434 SF

FLOOR PLAN

**Kenneth Fellows**  
kfellows@klnb.com  
301-222-0210

**Robert Pugh**  
rpugh@klnb.com  
301-222-0211

**Keiry Martinez**  
kmartinez@klnb.com  
703-334-5629

**klnb**

# MEADOWS CORPORATE PARK

Meadows II, III  
12501, 12520 Prosperity Dr, Silver Spring, MD 20904



MEADOWS III - 12501 PROSPERITY DR

**Kenneth Fellows**  
kfellows@klnb.com  
301-222-0210

**Robert Pugh**  
rpugh@klnb.com  
301-222-0211

**Keiry Martinez**  
kmartinez@klnb.com  
703-334-5629

**klnb**

# MEADOWS CORPORATE PARK

Meadows II, III  
12501, 12520 Prosperity Dr, Silver Spring, MD 20904



## MEADOWS III

12501 PROSPERITY DR  
SILVER SPRING, MD

■ Suite 235 | 3,427 SF

■ Suite 250 | 2,827 SF

Total Contiguous | 6,254 SF

FLOOR PLAN

**Kenneth Fellows**  
kfellows@klnb.com  
301-222-0210

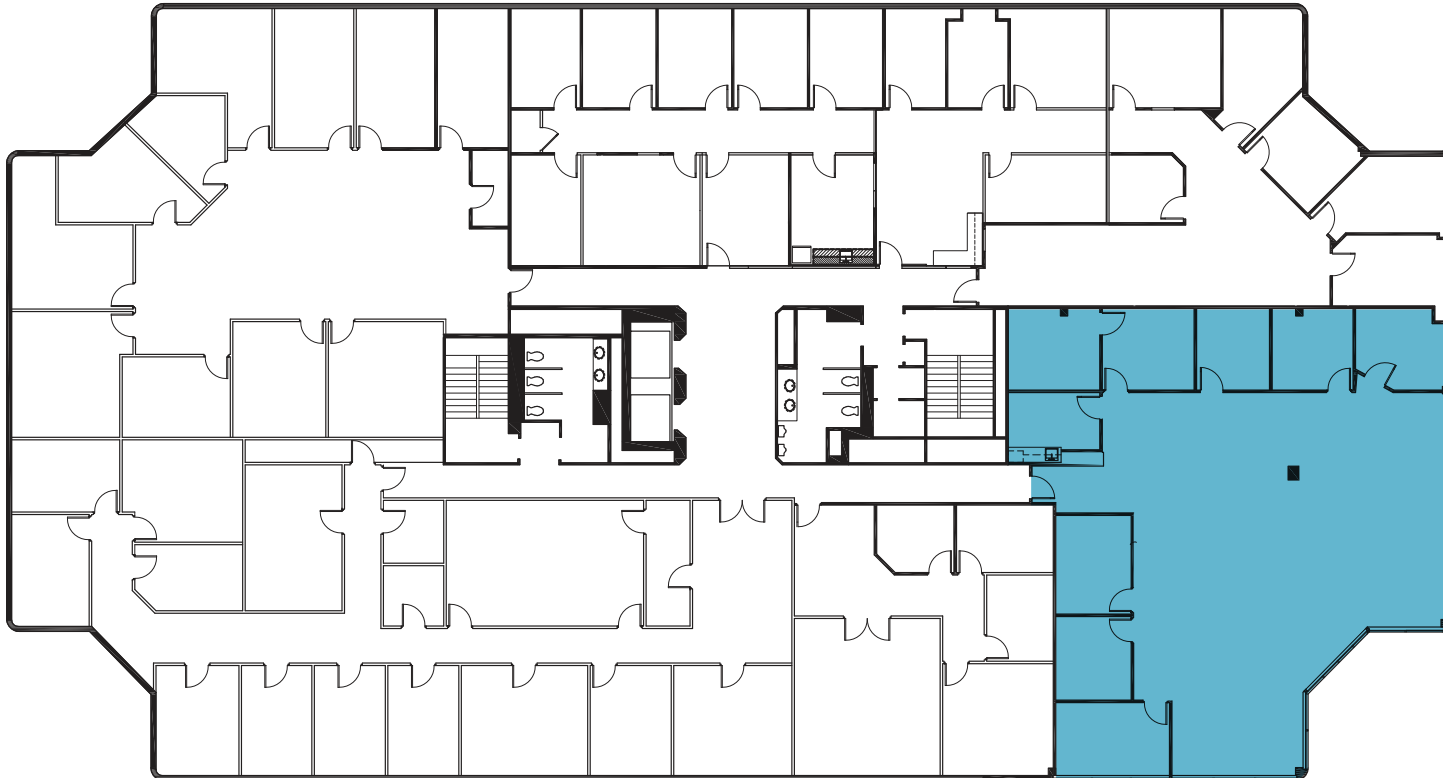
**Robert Pugh**  
rpugh@klnb.com  
301-222-0211

**Keiry Martinez**  
kmartinez@klnb.com  
703-334-5629

**klnb**

# MEADOWS CORPORATE PARK

Meadows II, III  
12501, 12520 Prosperity Dr, Silver Spring, MD 20904



## MEADOWS III

12501 PROSPERITY DR  
SILVER SPRING, MD

■ Suite 350 | 3,507 SF

FLOOR PLAN

**Kenneth Fellows**  
kfellows@klnb.com  
301-222-0210

**Robert Pugh**  
rpugh@klnb.com  
301-222-0211

**Keiry Martinez**  
kmartinez@klnb.com  
703-334-5629

**klnb**



# MEADOWS CORPORATE PARK

Meadows II, III  
12501, 12520 Prosperity Dr, Silver Spring, MD 20904



## MEADOWS III

12501 PROSPERITY DR  
SILVER SPRING, MD

- Suite 400 | 3,452 SF
- Suite 455 | 1,103 SF

\*Up to 4,555 SF

FLOOR PLAN

**Kenneth Fellows**  
kfellows@klnb.com  
301-222-0210

**Robert Pugh**  
rpugh@klnb.com  
301-222-0211

**Keiry Martinez**  
kmartinez@klnb.com  
703-334-5629

**klnb**

# MEADOWS CORPORATE PARK

Meadows II, III  
12501, 12520 Prosperity Dr, Silver Spring, MD 20904

For More Information, Please Contact:

**Kenneth Fellows**

kfellows@klnb.com  
301-222-0210

**Robert Pugh**

rpugh@klnb.com  
301-222-0211

**Keiry Martinez**

kmartinez@klnb.com  
703-334-5629

2273 Research Blvd, Suite 150  
Rockville, MD 20850

[klnb.com](http://klnb.com)



[instagram.com/klnbcre](https://www.instagram.com/klnbcre)



[linkedin.com/company/klnb](https://www.linkedin.com/company/klnb)



[facebook.com/KLNBCRE](https://www.facebook.com/KLNBCRE)

While we have no reason to doubt the accuracy of any of the information supplied, we cannot, and do not, guarantee its accuracy. All information should be independently verified prior to a purchase or lease of the property. We are not responsible for errors, omissions, misuse, or misinterpretation of information contained herein and make no warranty of any kind, express or implied, with respect to the property or any other matters.

