

## AVAILABILITY:

### Warehouse (Building III)

Bay B

- 900 SF
- \$19.00/NNN

### Outdoor Storage Available

- \$4.00/SF
- 25,912 SF Available OR  
42 parking spaces @ \$200/month per space

## PROPERTY FEATURES:

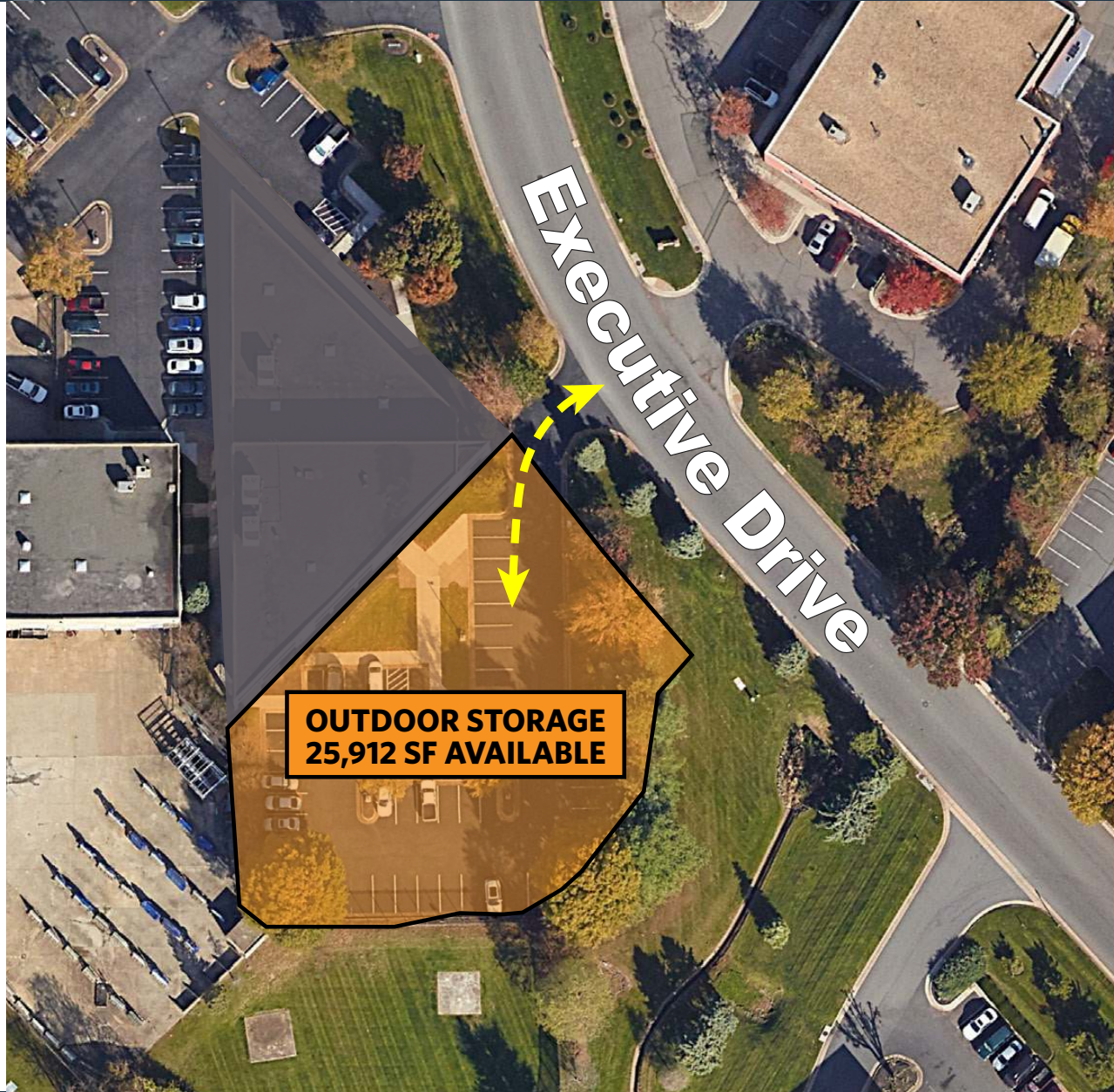
- Less than 1 mile to Dulles Airport
- Ready to move-in
- PD-GI zoning
- At grade drive-ins

# FLOOR PLAN

## 105 EXECUTIVE DRIVE

105 EXECUTIVE DRIVE, STERLING, VIRGINIA 20166

OUTDOOR STORAGE | 25,912 SF



**RYAN GOELLER, CCIM**

rgoeller@klnb.com | 703-268-2731

**CHASE STEWART**

cstewart@klnb.com | 703-268-2732

**JEFF TARAE**

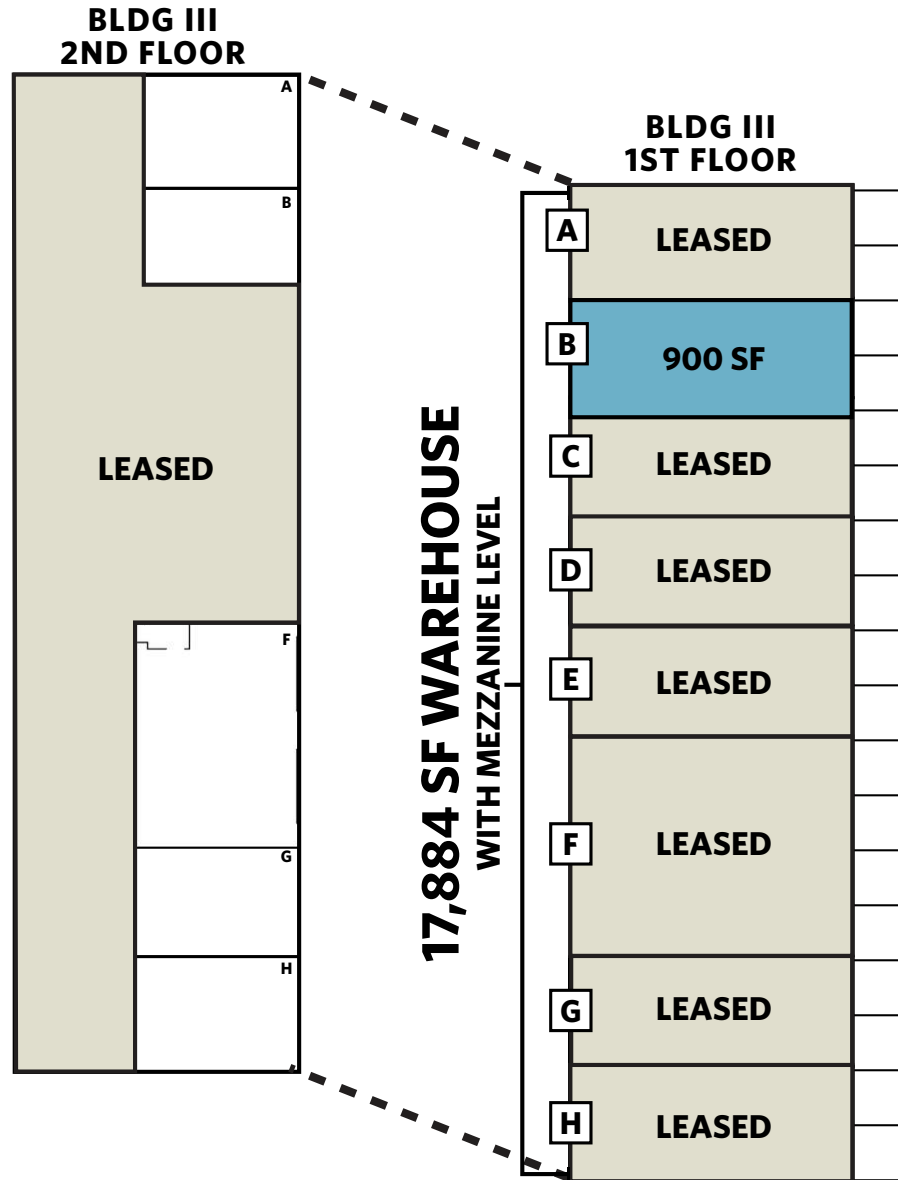
jtarae@klnb.com | 703-268-2741

**TYLER CUMBERLAND**

tcumberland@klnb.com | 703-268-2720



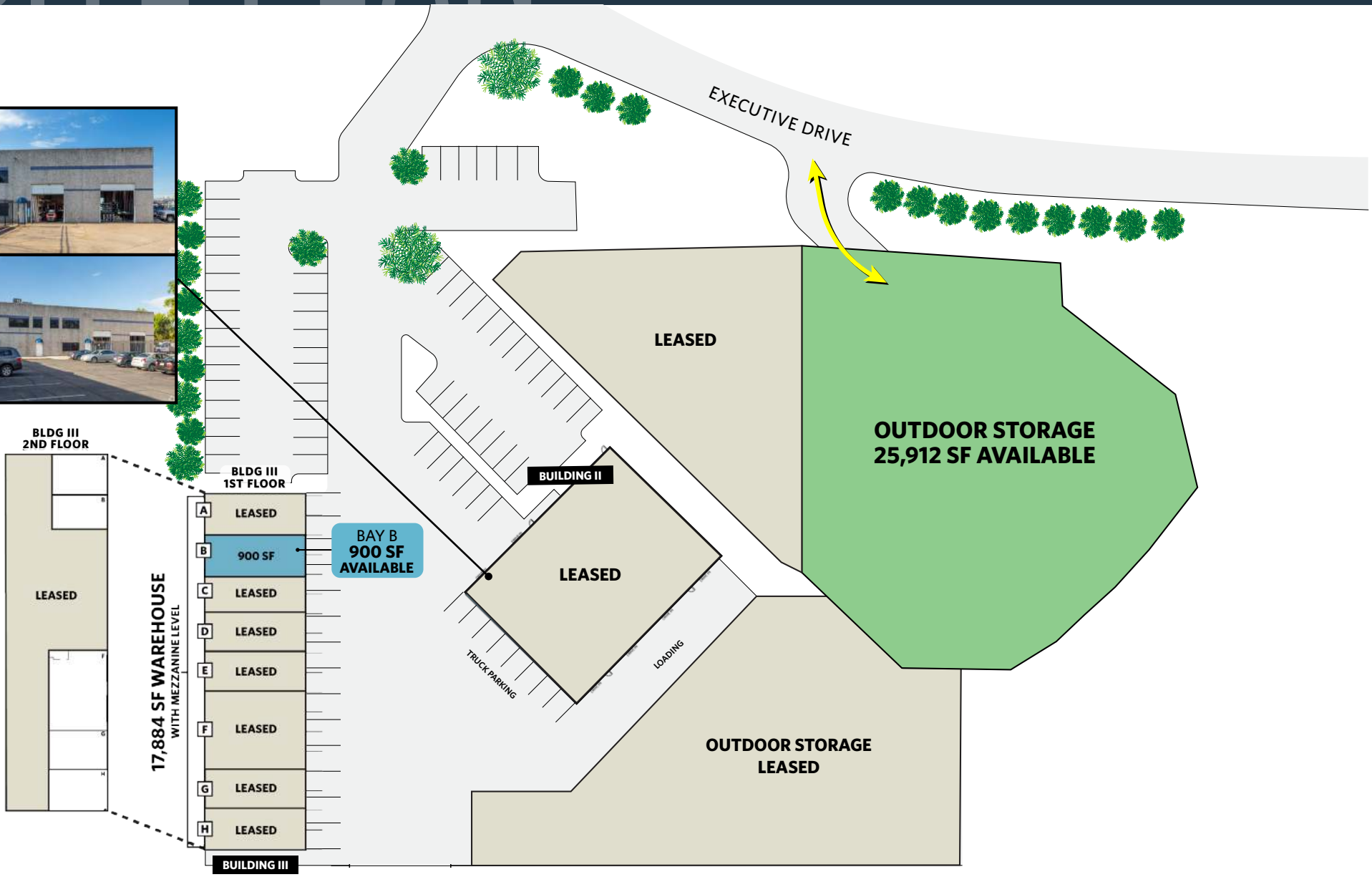
## BUILDING III - BAY B | 900 SF



# SITE PLAN

# 105 EXECUTIVE DRIVE

105 EXECUTIVE DRIVE, STERLING, VIRGINIA 20166



**RYAN GOELLER, CCIM**

rgoeller@klnb.com | 703-268-2731

**CHASE STEWART**

cstewart@klnb.com | 703-268-2732

**JEFF TARAЕ**

jtarae@klnb.com | 703-268-2741

**TYLER CUMBERLAND**

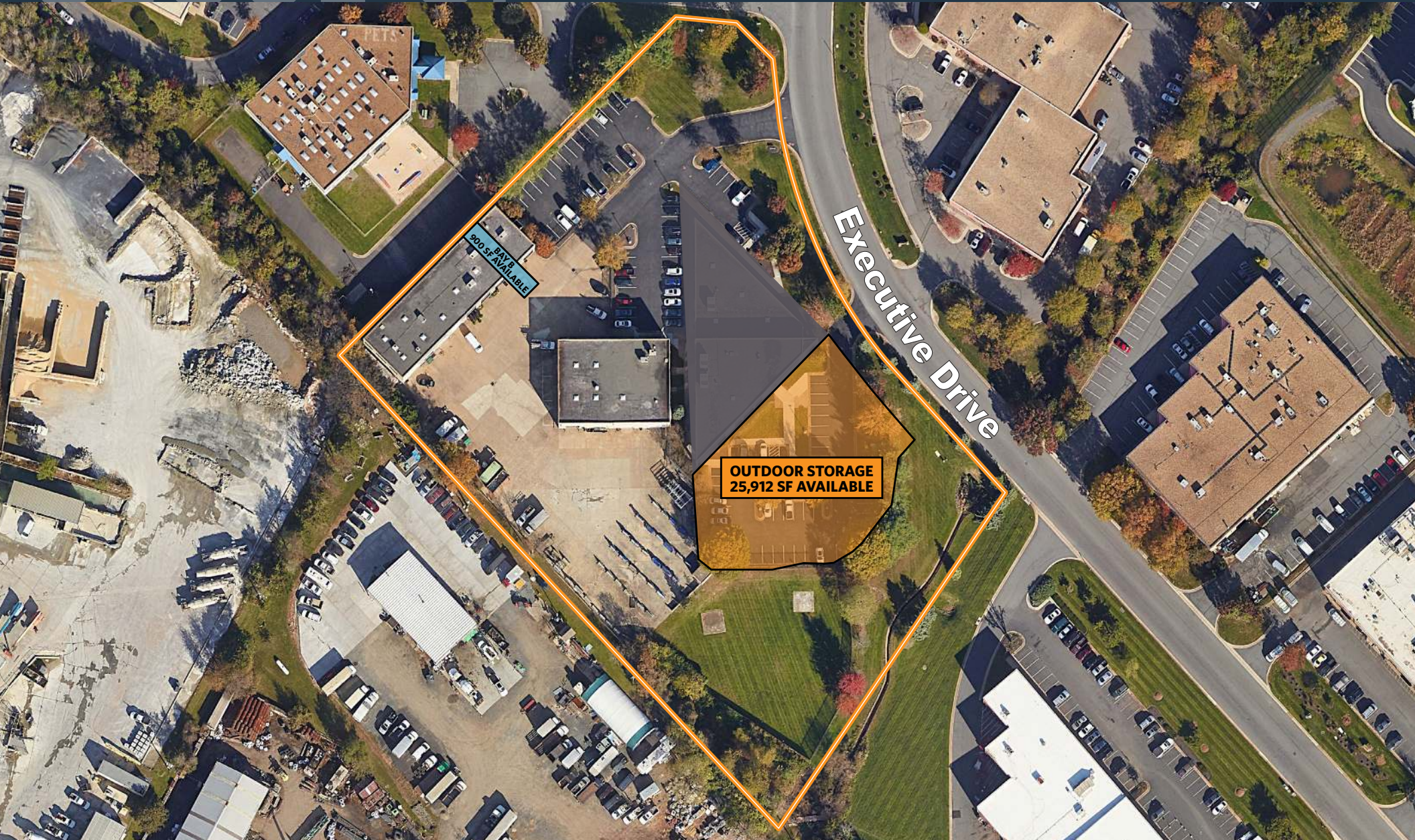
tcumberland@klnb.com | 703-268-2720



# CLOSE UP

## 105 EXECUTIVE DRIVE

105 EXECUTIVE DRIVE, STERLING, VIRGINIA 20166



900 SF AVAILABLE

OUTDOOR STORAGE  
25,912 SF AVAILABLE

Executive Drive

**RYAN GOELLER, CCIM**

rgoeller@klnb.com | 703-268-2731

**CHASE STEWART**

cstewart@klnb.com | 703-268-2732

**JEFF TARAE**

jtarae@klnb.com | 703-268-2741

**TYLER CUMBERLAND**

tcumberland@klnb.com | 703-268-2720



## FOR MORE INFORMATION, PLEASE CONTACT:

### RYAN GOELLER, CCIM

rgoeller@klnb.com | 703-268-2731

### CHASE STEWART

cstewart@klnb.com | 703-268-2732

### JEFF TARAE

jtarae@klnb.com | 703-268-2741

### TYLER CUMBERLAND

tcumberland@klnb.com | 703-268-2720

8065 Leesburg Pike, Suite 700, Tysons, VA 22182

---

[klnb.com](http://klnb.com)



[instagram.com/klnbcre](https://www.instagram.com/klnbcre)



[linkedin.com/company/klnb](https://www.linkedin.com/company/klnb)



[facebook.com/KLNB](https://www.facebook.com/KLNB)

[CLICK TO VIEW PROPERTY WEBSITE](#)