

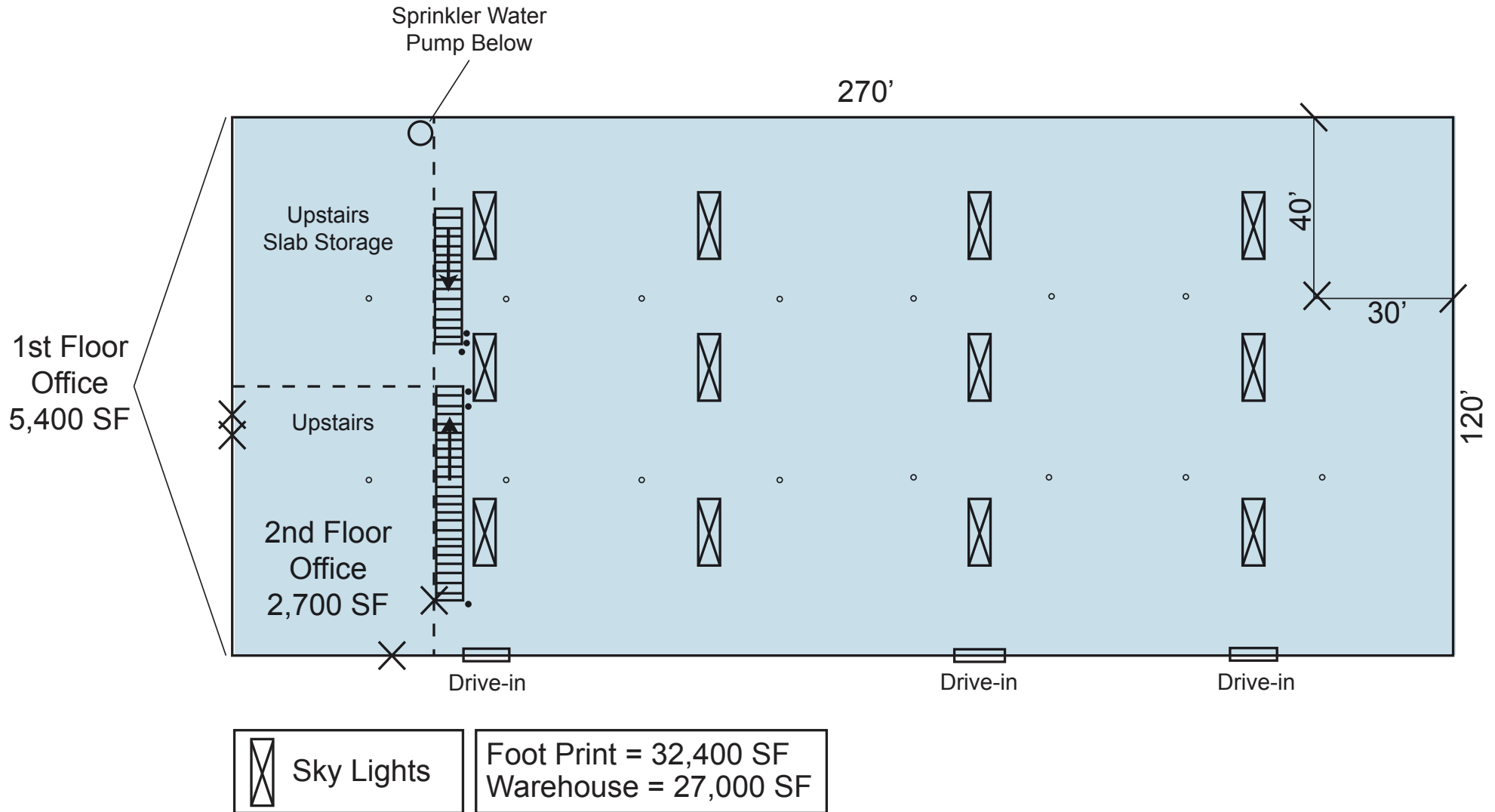


AVAILABILITY

- 27,000 SF of Warehouse with 8,100 SF of Office
- 32,400 SF Foot Print, concrete Mezzanine (one half storage and one half meeting room) on top of 5,400 SF of Office

FOR LEASE - WAREHOUSE/OFFICE

- Conveniently Located Across Route 606 from the North Gate of Dulles International Airport
- PDGI - 1972
- Three drive-in's with Three Additional Punchouts
- Lease Rate: \$19.00 PSF, NNN
- Pass-Thru's: \$3.00 FST
- 24' Ceiling Height
- 30x40 column spacing
- 4.36 Acres with Outdoor Storage
- Signage Available
- Stand alone building



CLOSE-UP

22884 RELOCATION DRIVE

22884 RELOCATION DRIVE STERLING, VIRGINIA 20166



SITE



OUTDOOR STORAGE

RYAN GOELLER, CCIM
rgoeller@klnb.com | 703-268-2731

CHASE STEWART
cstewart@klnb.com | 703-268-2732

JEFF TARAE
jtarae@klnb.com | 703-268-2741

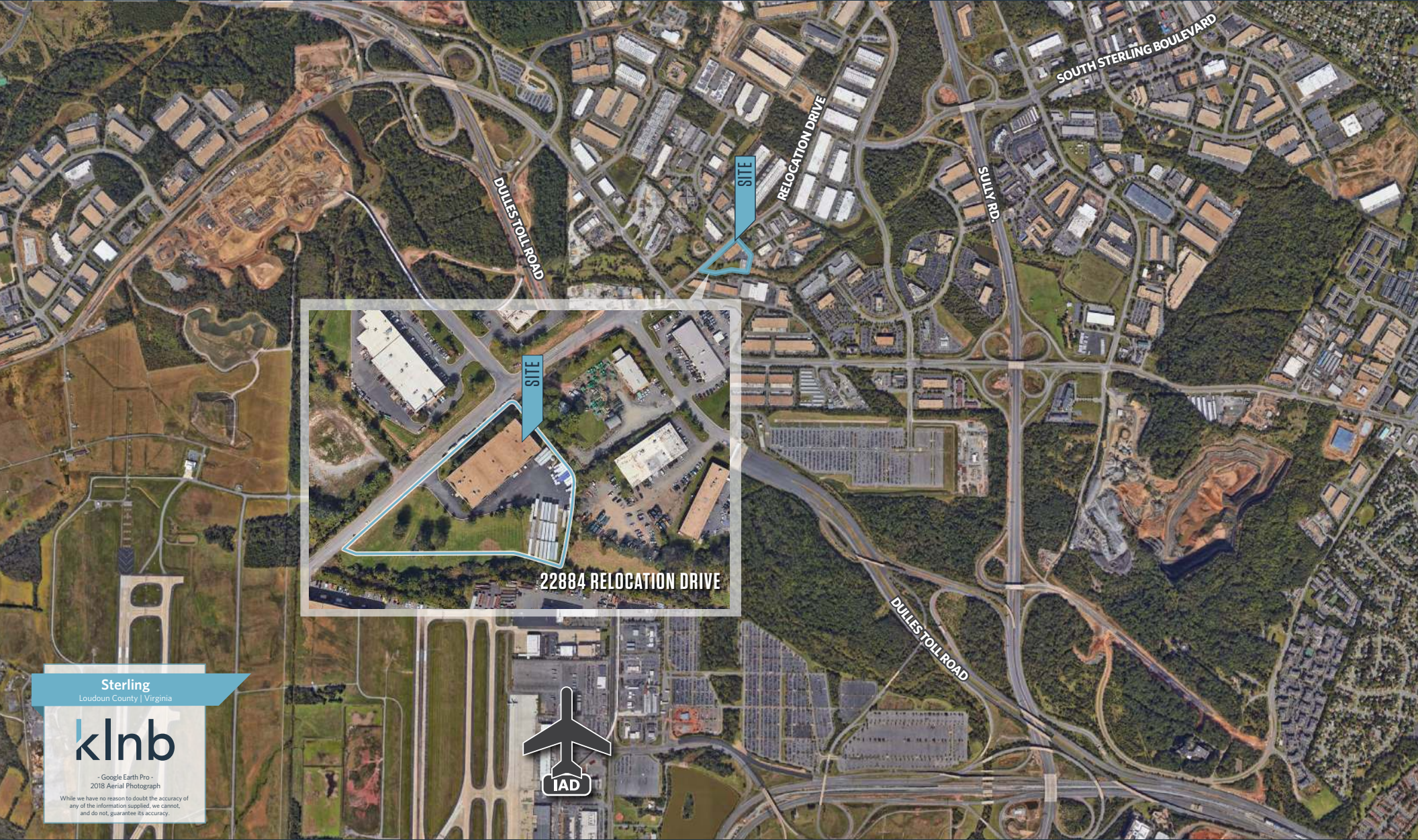
TYLER CUMBERLAND
tcumberland@klnb.com | 703-268-2720



AERIAL

22884 RELOCATION DRIVE

22884 RELOCATION DRIVE STERLING, VIRGINIA 20166



Sterling

Loudoun County | Virginia

klnb

— Google Earth Pro -
2018 Aerial Photograph

While we have no reason to doubt the accuracy of any of the information supplied, we cannot, and do not, guarantee its accuracy.

RYAN GOELLER, CCIM

rgoeller@klnb.com | 703-268-2731

CHASE STEWART

cstewart@klnb.com | 703-268-2732

JEFF TARAE

jtarae@klnb.com | 703-268-2741

TYLER CUMBERLAND

tcumberland@klnb.com | 703-268-2720

NA klnb

PHOTOS

22884 RELOCATION DRIVE

22884 RELOCATION DRIVE STERLING, VIRGINIA 20166



OUTDOOR STORAGE



LOADING AREA



WAREHOUSE OUTSIDE



WAREHOUSE INSIDE

RYAN GOELLER, CCIM
rgoeller@klnb.com | 703-268-2731

CHASE STEWART
cstewart@klnb.com | 703-268-2732

JEFF TARAE
jtarae@klnb.com | 703-268-2741

TYLER CUMBERLAND
tcumberland@klnb.com | 703-268-2720

NAI klnb

FOR MORE INFORMATION, PLEASE CONTACT:

RYAN GOELLER, CCIM

rgoeller@klnb.com | 703-268-2731

CHASE STEWART

cstewart@klnb.com | 703-268-2732

JEFF TARAE

jtarae@klnb.com | 703-268-2741

TYLER CUMBERLAND

tcumberland@klnb.com | 703-268-2720

8065 Leesburg Pike, Suite 700, Tysons, VA 22182

klnb.com

 facebook.com/KLNBCRE

 linkedin.com/company/klnb

 instagram.com/klnbcre

CLICK TO VIEW PROPERTY WEBSITE