

NOW OPEN!



THIS WAY  
FORWARD

CARLYLE  
CROSSING

COMING SOON!  
TED'S BULLETIN HONEYMOON

EISENHOWER AVENUE & TELEGRAPH ROAD, ALEXANDRIA, VA



DIMITRI GEORGEAKOS  
dimitri@klnb.com | 703.268.2710

JAKE LEVIN  
jlevin@klnb.com | 202.909.6102

BETH SARGENT  
bsargent@klnb.com | 703.268.2716

DEVELOPED BY:  
STONEBRIDGE



# THIS WAY FOR RETAIL OPPORTUNITIES

[CLICK TO PLAY VIDEO](#)

Steps from the **Eisenhower Metro** and two minutes from the Beltway, Alexandria's most **forward-thinking destination** is taking shape. Anchored by a **Wegmans** and featuring three apartment towers, Carlyle Crossing is a **1.7 million SF development** that's transforming Alexandria for the future.

**DIRECT ACCESS**  
to I-495 with  
over 289,000  
cars per day

210,000 sf of  
**RETAIL &  
RESTAURANT**

84,000 sf  
*Wegmans*  
**NOW OPEN!**

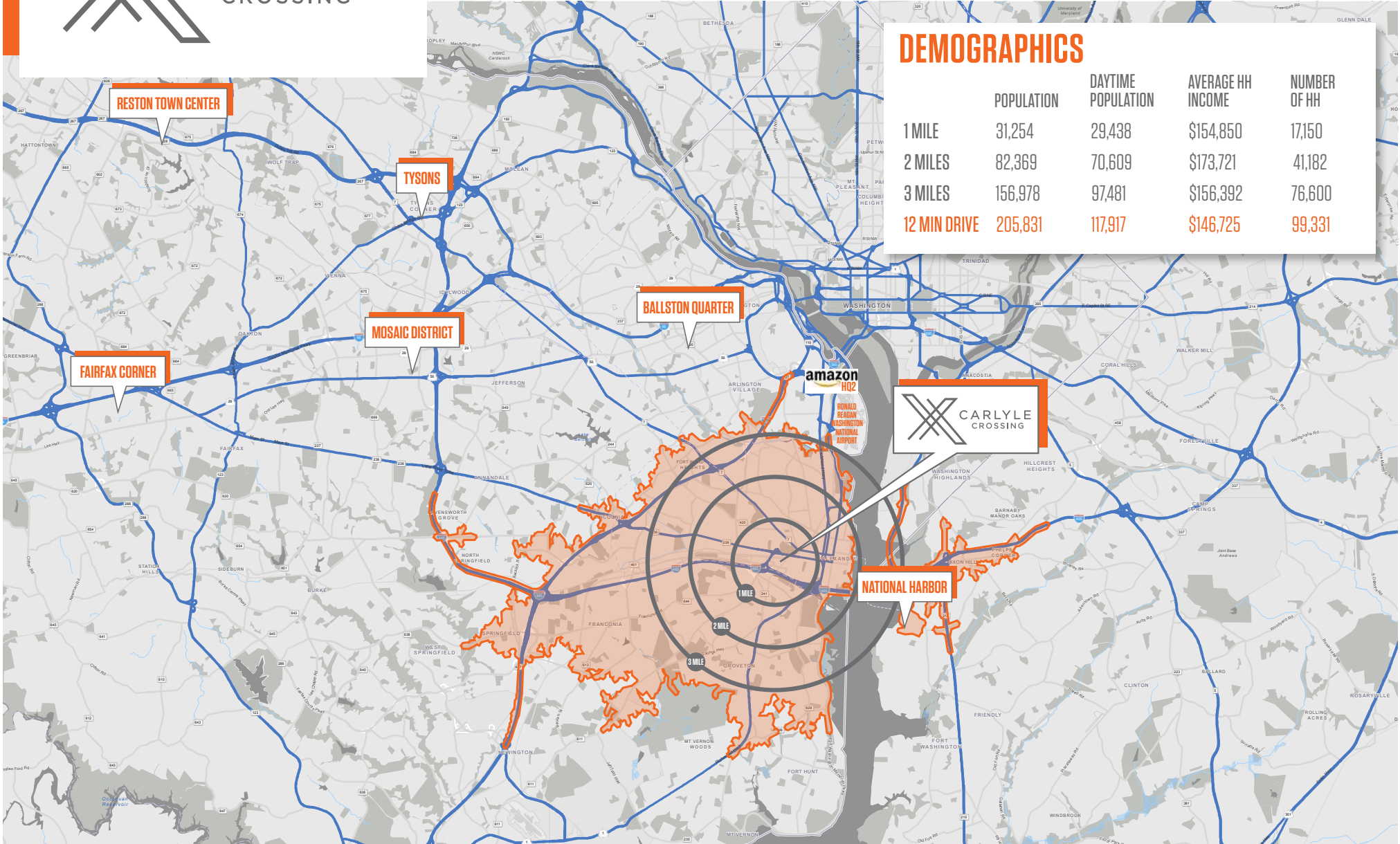
700+ luxury  
**RESIDENCES**  
Available for  
move-in

3 acres of  
**GREEN SPACE**

**ON-SITE PARKING**  
for over  
1550 cars



*Carlyle Crossing benefits from affluent demographics, essential demand drivers, direct connections to mass transit nodes, unparalleled access to the Capital Beltway, and existing high-quality amenities.*





CARLYLE  
CROSSING

# CARLYLE DEVELOPMENT SUMMARY

OFFICE 5,935,396 SF EXISTING | 2,545,013 SF PLANNED  
 RETAIL 436,882 SF EXISTING | 340,000 SF PLANNED  
 RESIDENTIAL 3,499 UNITS EXISTING | 3,281 UNITS PLANNED

\*Source: costar.com



CARLYLE CROSSING | 2501 MANDEVILLE LANE | ALEXANDRIA, VA 22332

# DEVELOPMENT



#	PROJECT
<b>SITE</b>	<b>CARLYLE CROSSING</b>
1	CARLYLE MILL (RESIDENTIAL)
2	THE PARK MERIDIAN (RESIDENTIAL)
3	PARADIGM (RESIDENTIAL & HOTEL)
4	CARLYLE PLAZA
5	HOFFMAN - BLOCK 2-3
6	HOFFMAN - BLOCK 9A/9B
7	HOFFMAN TOWERS
8	WAMATA OFFICES
9	Holiday Inn
10	HOFFMAN TOWN CENTER
11	MILL RACE (APARTMENTS/OFFICES)
12	Marriott
13	WHOLE FOODS
14	BURKE & HERBERT BANK
15	US PATENT & TRADEMARK OFFICE
16	EISENHOWER CENTER III
17	ALEXANDRIA RENEW ENVIR. CENTER
18	PARADIGM
19	THE FOUNDRY
C	CARLYLE - BLOCKS A-O

■ SITE  
■ UNDER CONSTRUCTION  
■ PLANNED DEVELOPMENTS  
■ EXISTING

# CLOSE-UP



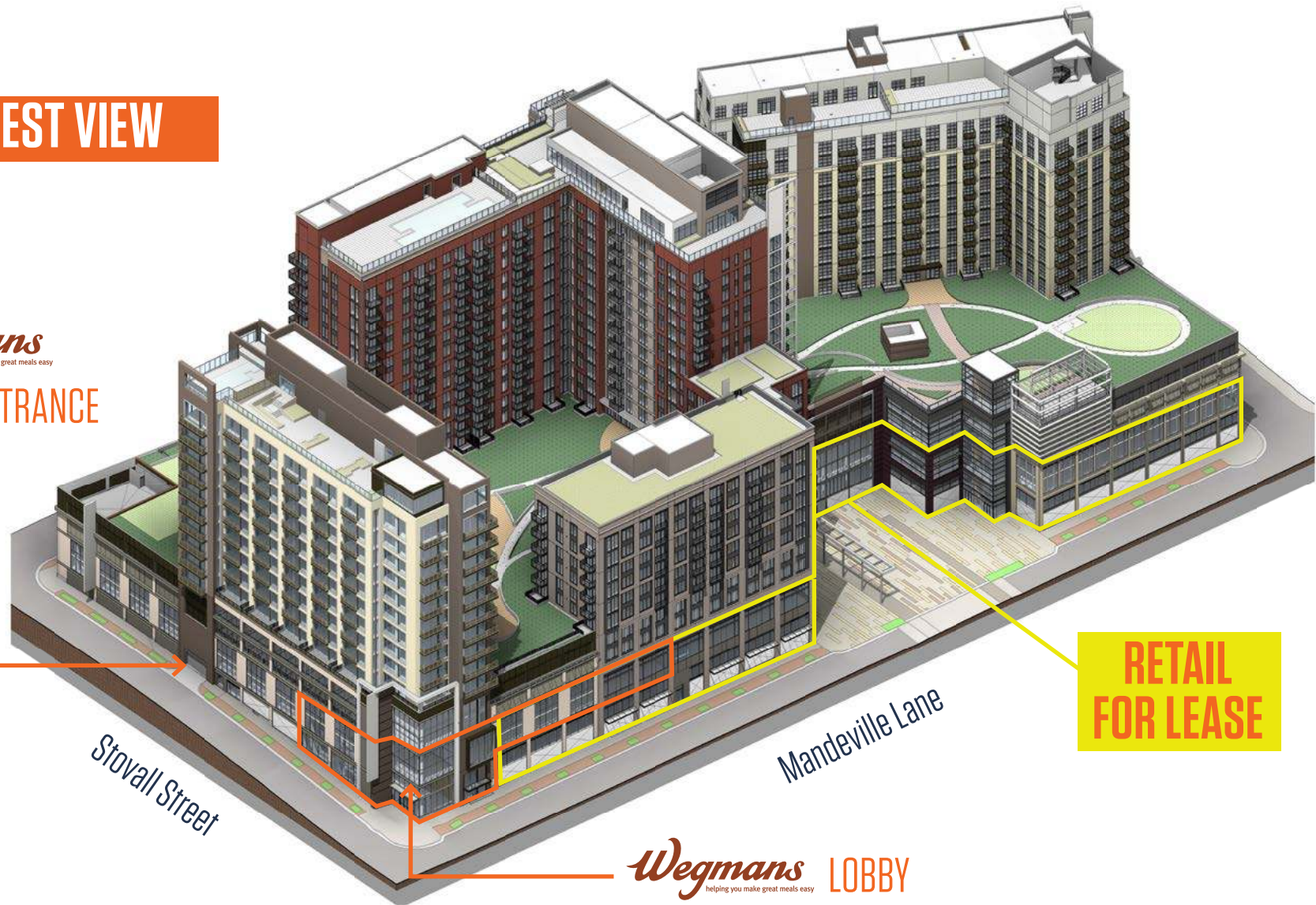


CARLYLE  
CROSSING

# ELEVATION

## SOUTHWEST VIEW

*Wegmans*  
helping you make great meals easy  
PARKING ENTRANCE



RETAIL  
FOR LEASE

Stovall Street

Mandeville Lane

*Wegmans* LOBBY  
helping you make great meals easy



CARLYLE CROSSING | 2501 MANDEVILLE LANE | ALEXANDRIA, VA 22332







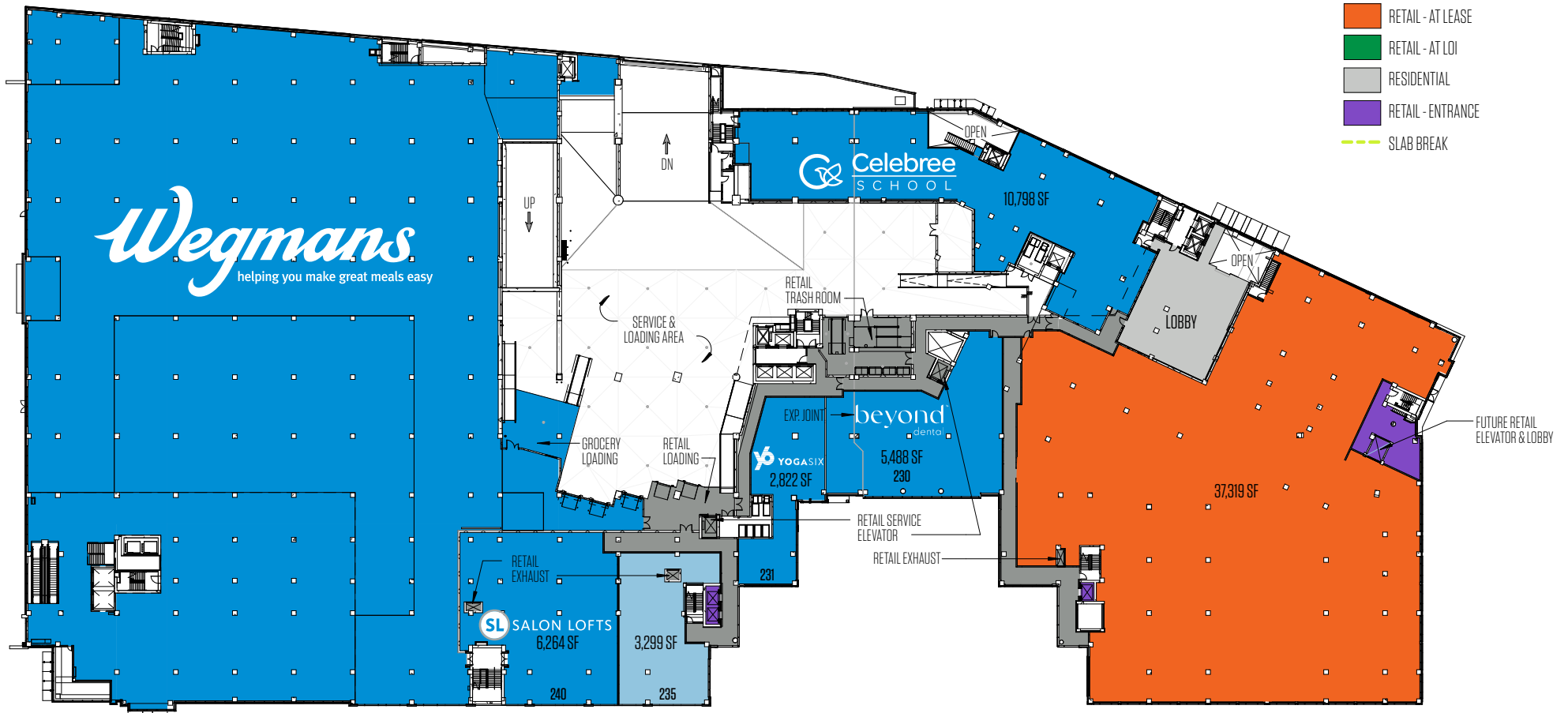
CARLYLE  
CROSSING

# SITE PLAN

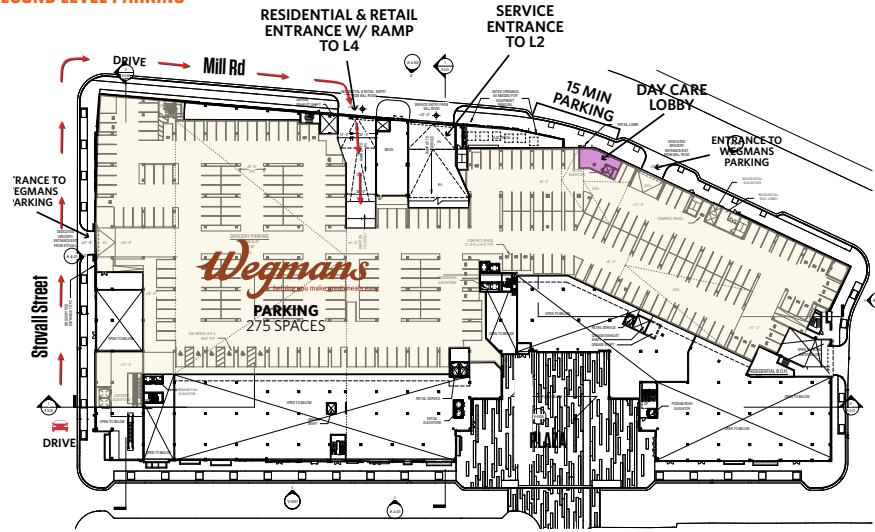
## SECOND LEVEL RETAIL

### LEGEND

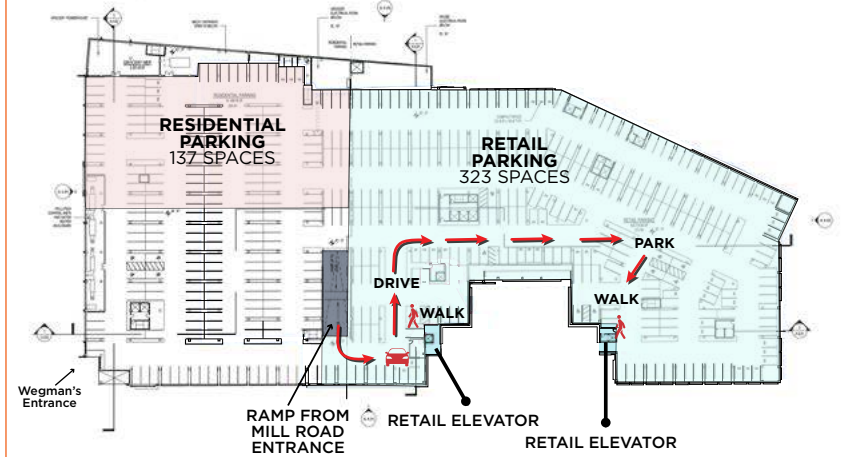
- RETAIL - AVAILABLE
- RETAIL - LEASED
- RETAIL - AT LEASE
- RETAIL - AT LOI
- RESIDENTIAL
- RETAIL - ENTRANCE
- SLAB BREAK



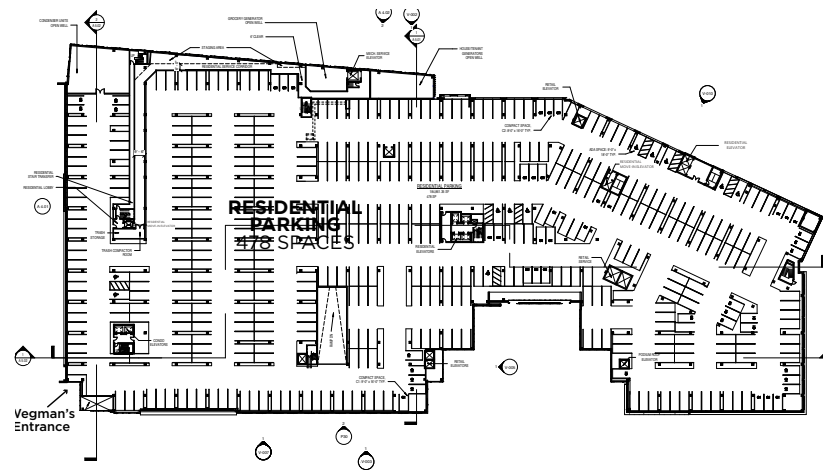
## SECOND LEVEL PARKING



## FOURTH LEVEL PARKING



## FIFTH LEVEL PARKING





# CARLYLE CROSSING



**DIMITRI GEORGELAKOS**  
dimitri@klnb.com | 703.268.2710

**JAKE LEVIN**  
jlevin@klnb.com | 202.909.6102

**BETH SARGENT**  
bsargent@klnb.com | 703.268.2716

**DEVELOPED BY:**  
STONEBRIDGE

While we have no reason to doubt the accuracy of any of the information supplied, we cannot, and do not, guarantee its accuracy. All information should be independently verified prior to a purchase or lease of the property. We are not responsible for errors, omissions, misuse, or misinterpretation of information contained herein and make no warranty of any kind, express or implied, with respect to the property or any other matters.