

OAKLAND RIDGE INDUSTRIAL PARK

8910 - 8940 Route 108, Columbia, MD 21045
Howard County



AVAILABLE SUITES

- **8920 Route 108**
 - » Suites B - D: 24,473 SF; Dock and drive-in loading
- **8930 Route 108**
 - » Suite C: 4,438 SF; 100% office; Turnkey church space
- **8940 Route 108**
 - » Suites F - G: 3,967 SF up to 7,934 SF; 90% office; Two (2) docks and two (2) ramps

- Conveniently located near Downtown Columbia
- Excellent visibility on Route 108
- Easy access to Routes 29, 100, 32 and I-95
- Minutes away from Columbia Mall, Howard Community College, Howard County General Hospital, Fort Meade & BWI Airport
- Loading: Dock high and drive-in available
- Dorsey MARC Station (Camden Line) - 6.9 miles
- Signage opportunity
- Ample free parking

NEARBY AMENITIES



Spence Daw
sdaw@klnb.com
443-574-1429

Steele Stanwick
sstanwick@klnb.com
443-574-1420

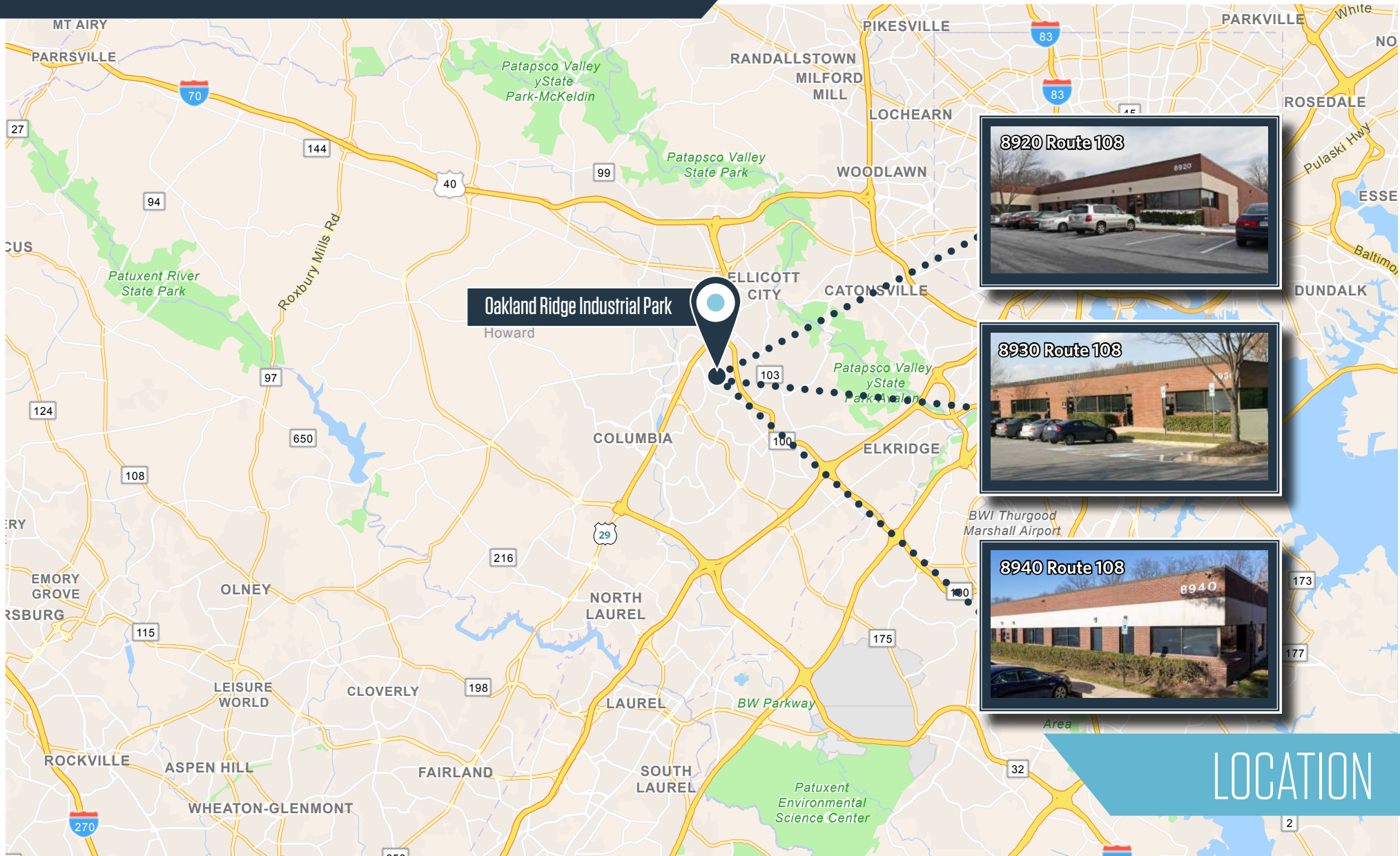
David J. Fritz, CCIM, SIOR
dfritz@klnb.com
443-574-14120

9881 Broken Land Pkwy, #300
Columbia, MD 21043
klnb.com



OAKLAND RIDGE INDUSTRIAL PARK

8910 - 8940 Route 108, Columbia, MD 21045
Howard County



Spence Daw
sdaw@klnb.com
443-574-1429

Steele Stanwick
sstanwick@klnb.com
443-574-1420

David J. Fritz, CCIM, SIOR
dfritz@klnb.com
443-574-14120

9881 Broken Land Pkwy, #300
Columbia, MD 21043
klnb.com

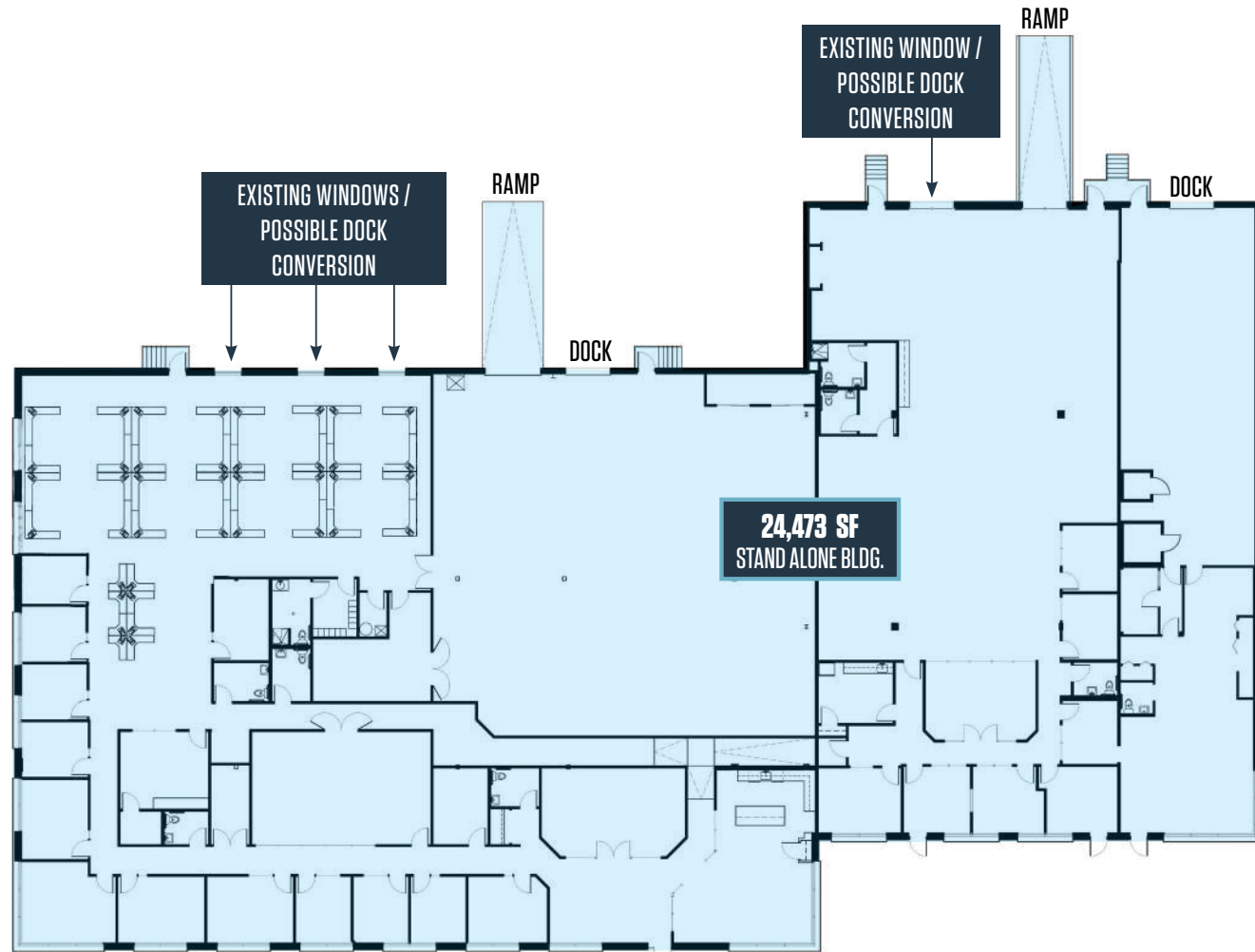


OAKLAND RIDGE INDUSTRIAL PARK

8910 - 8940 Route 108, Columbia, MD 21045
Howard County

8920 Route 108
SUITES B - D
24,473 SF

- » 24,473 SF
- » Dock & drive-in loading



Spence Daw
sdaw@klnb.com
443-574-1429

Steele Stanwick
sstanwick@klnb.com
443-574-1420

David J. Fritz, CCIM, SIOR
dfritz@klnb.com
443-574-14120

9881 Broken Land Pkwy, #300
Columbia, MD 21043
klnb.com

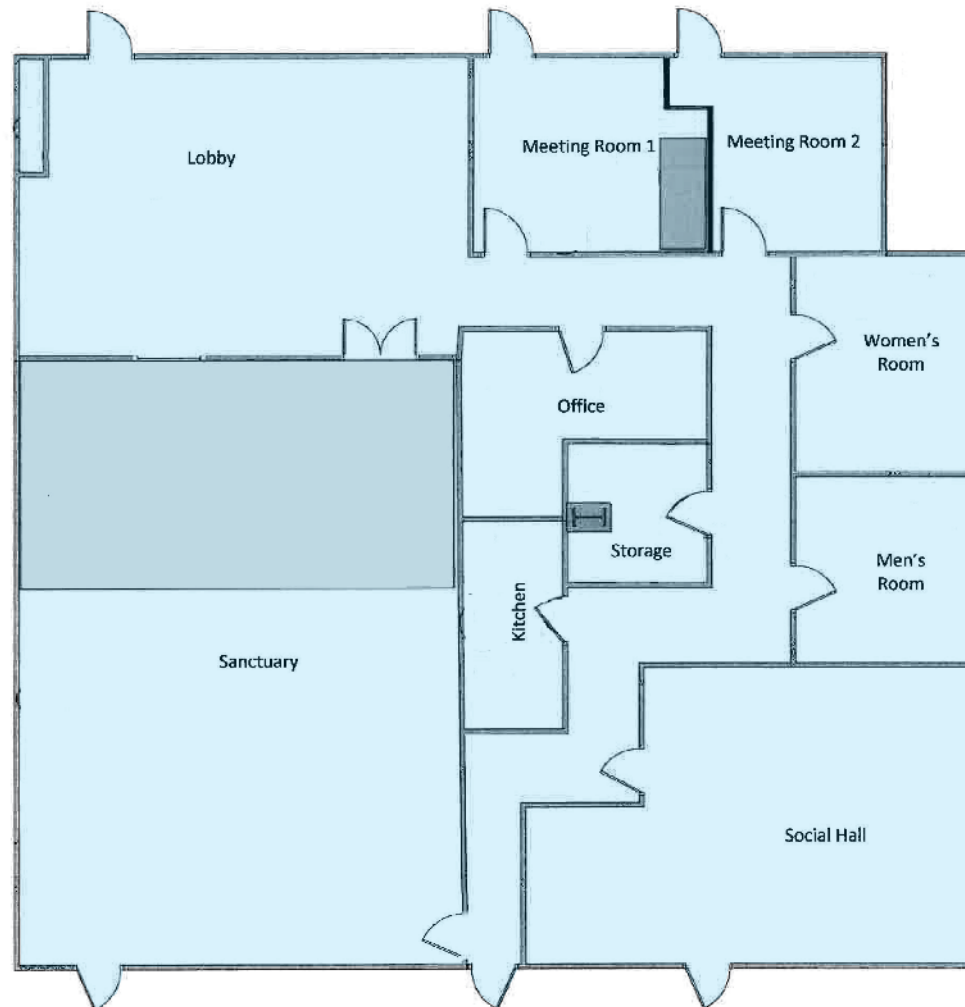


OAKLAND RIDGE INDUSTRIAL PARK

8910 - 8940 Route 108, Columbia, MD 21045
Howard County

8930 Route 108
SUITE C
4,438 SF

- » 4,438 SF
- » 100% office
- » Turnkey church space



Spence Daw
sdaw@klnb.com
443-574-1429

Steele Stanwick
sstanwick@klnb.com
443-574-1420

David J. Fritz, CCIM, SIOR
dfritz@klnb.com
443-574-14120

9881 Broken Land Pkwy, #300
Columbia, MD 21043
klnb.com

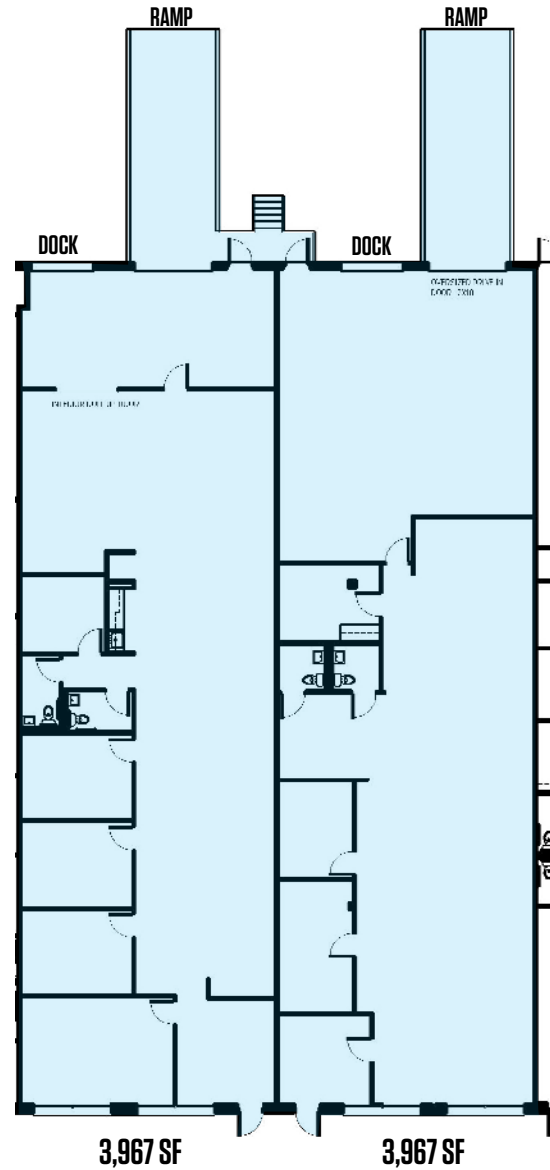


OAKLAND RIDGE INDUSTRIAL PARK

8910 - 8940 Route 108, Columbia, MD 21045
Howard County

8940 Route 108
SUITES F & G
7,934 SF

- » 3,967 SF up to 7,934 SF of office/flex
- » Two (2) docks & two (2) ramps



Spence Daw
sdaw@klnb.com
443-574-1429

Steele Stanwick
sstanwick@klnb.com
443-574-1420

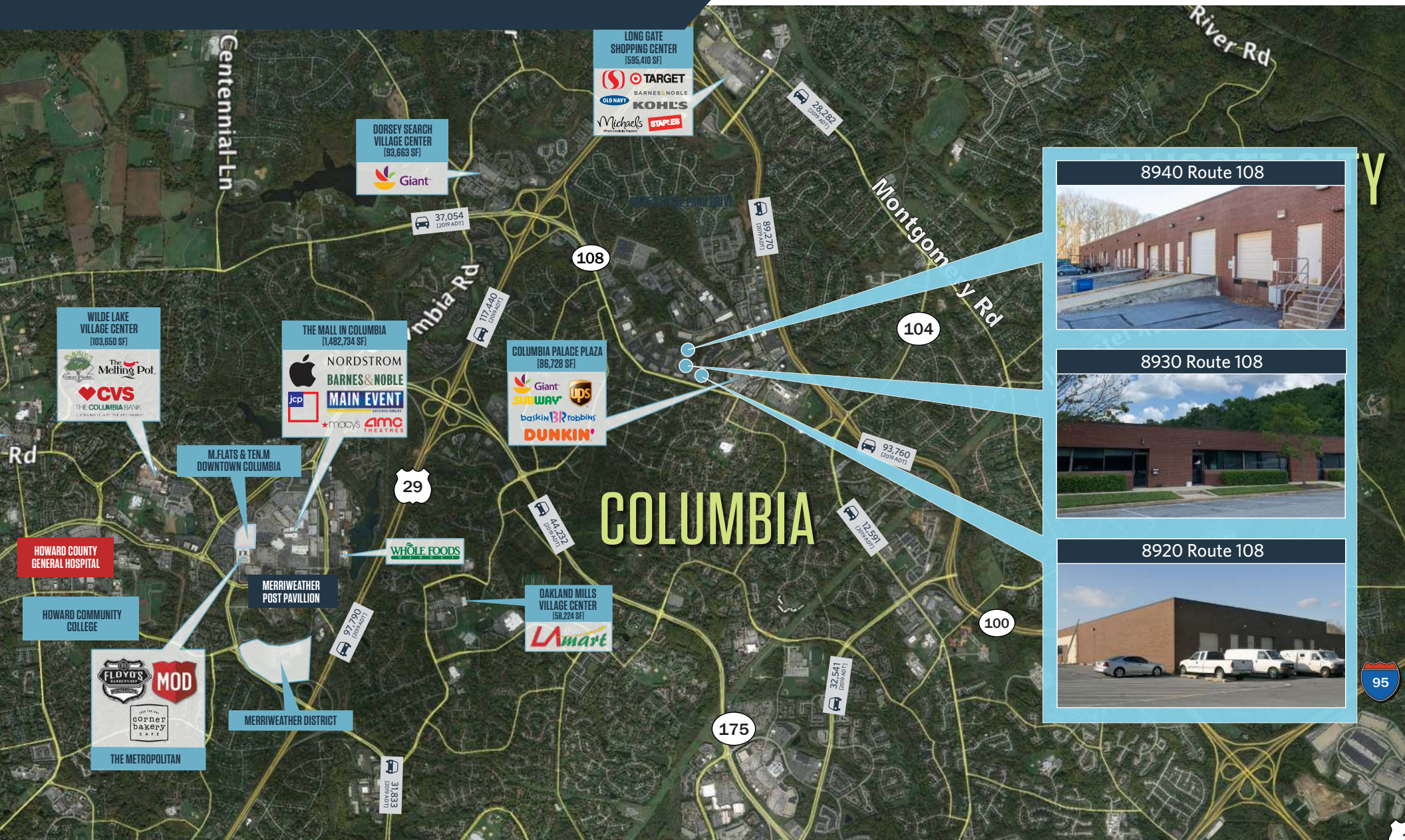
David J. Fritz, CCIM, SIOR
dfritz@klnb.com
443-574-14120

9881 Broken Land Pkwy, #300
Columbia, MD 21043
klnb.com

NAklnb

OAKLAND RIDGE INDUSTRIAL PARK

8910 - 8940 Route 108, Columbia, MD 21045
Howard County



Spence Daw
sdaw@klnb.com
443-574-1429

Steele Stanwick
sstanwick@klnb.com
443-574-1420

David J. Fritz, CCIM, SIOR
dfritz@klnb.com
443-574-14120

9881 Broken Land Pkwy, #300
Columbia, MD 21043
klnb.com



OAKLAND RIDGE INDUSTRIAL PARK

8910 - 8940 Route 108, Columbia, MD 21045
Howard County

[CLICK TO VIEW PROPERTY WEBSITE](#)

For More Information, Please Contact:

Spence Daw

sdaw@klnb.com
443-574-1429

Steele Stanwick

sstanwick@klnb.com
443-574-1420

David J. Fritz, CCIM, SIOR

dfritz@klnb.com
443-574-1410

9881 Broken Land Parkway, Suite 300
Columbia, MD 21046

klnb.com



[instagram.com/klnbcre](https://www.instagram.com/klnbcre)



[linkedin.com/company/klnb](https://www.linkedin.com/company/klnb)



[facebook.com/KLNBcre](https://www.facebook.com/KLNBcre)

While we have no reason to doubt the accuracy of any of the information supplied, we cannot, and do not, guarantee its accuracy. All information should be independently verified prior to a purchase or lease of the property. We are not responsible for errors, omissions, misuse, or misinterpretation of information contained herein and make no warranty of any kind, express or implied, with respect to the property or any other matters.

