

# 10939 PHILADELPHIA RD

10939 Philadelphia Road, White Marsh, MD 21162  
Baltimore County



## PROPERTY HIGHLIGHTS:

- **Building Size:** 33,020 SF
- **Office:** Two-story office
- **Zoning:** ML
- **Lot:** ±2.75 acres
- **Sprinkler:** Wet
- **Heat:** Gas
- **Loading:** 4 drive-in doors
- **Clear Height:** 30'
- **Construction:** Metal block and steel
- **Column Spacing:** Clear span

**Christopher Wright**  
cwright@klnb.com  
443-914-2600

**Peter Dudley**  
pdudley@klnb.com  
443-632-2064

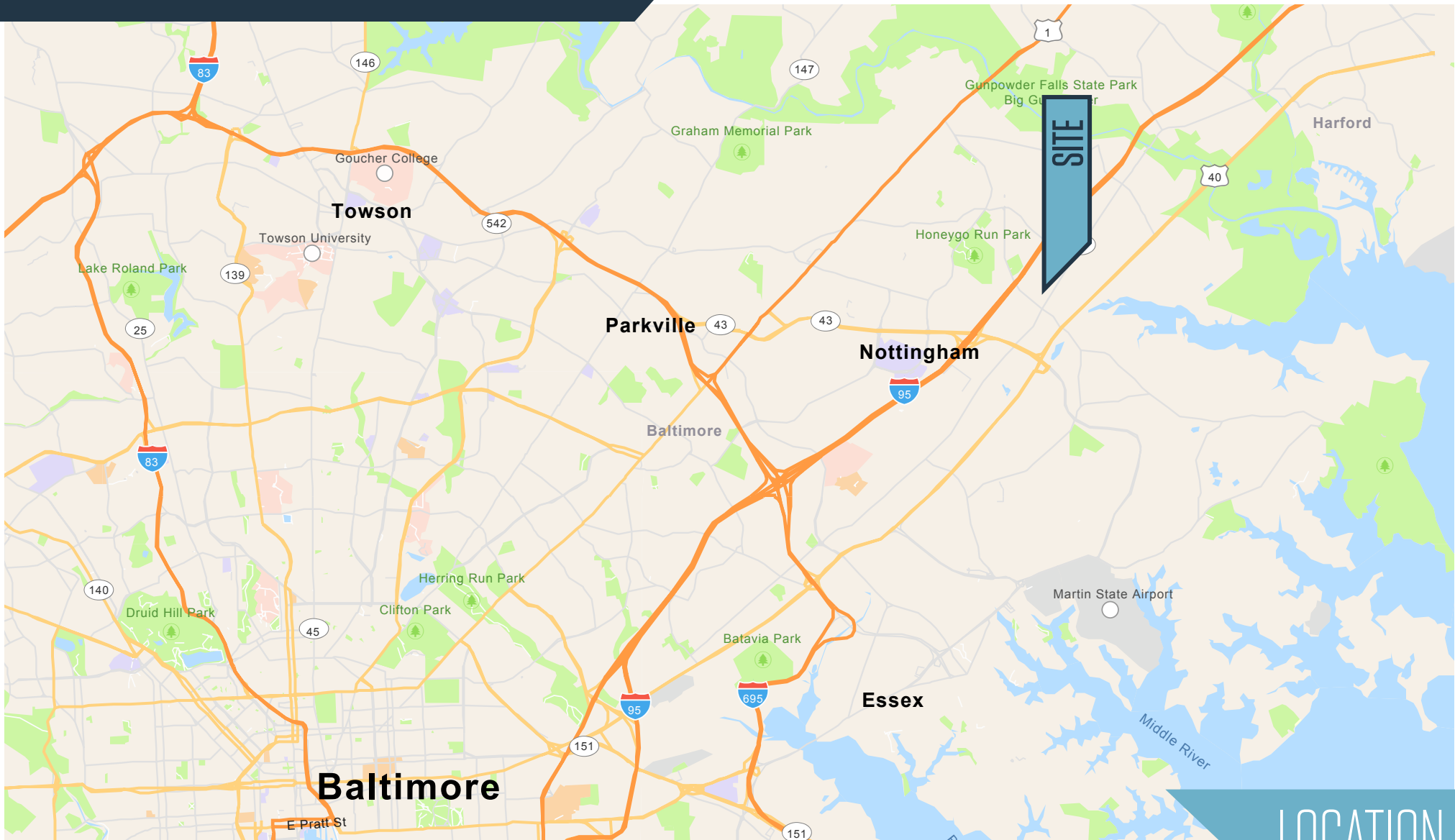
**Ryan Paszkiewicz**  
rpaszkiewicz@klnb.com  
443-632-2062

100 West Road, Suite 505  
Baltimore, MD 21204  
[klnb.com](http://klnb.com)

**NAI**klnb

# 10939 PHILADELPHIA RD

10939 Philadelphia Road, White Marsh, MD 21162  
Baltimore County



LOCATION

**Christopher Wright**  
cwright@klnb.com  
443-914-2600

**Peter Dudley**  
pdudley@klnb.com  
443-632-2064

**Ryan Paszkiewicz**  
rpszkiwicz@klnb.com  
443-632-2062

100 West Road, Suite 505  
Baltimore, MD 21204  
klnb.com





# 10939 PHILADELPHIA RD

10939 Philadelphia Road, White Marsh, MD 21162  
Baltimore County



±2.75  
acres

- Outside Storage
- Warehouse/Office

AERIAL

**Christopher Wright**  
cwright@klnb.com  
443-914-2600

**Peter Dudley**  
pdudley@klnb.com  
443-632-2064

**Ryan Paszkiewicz**  
rpszkiwicz@klnb.com  
443-632-2062

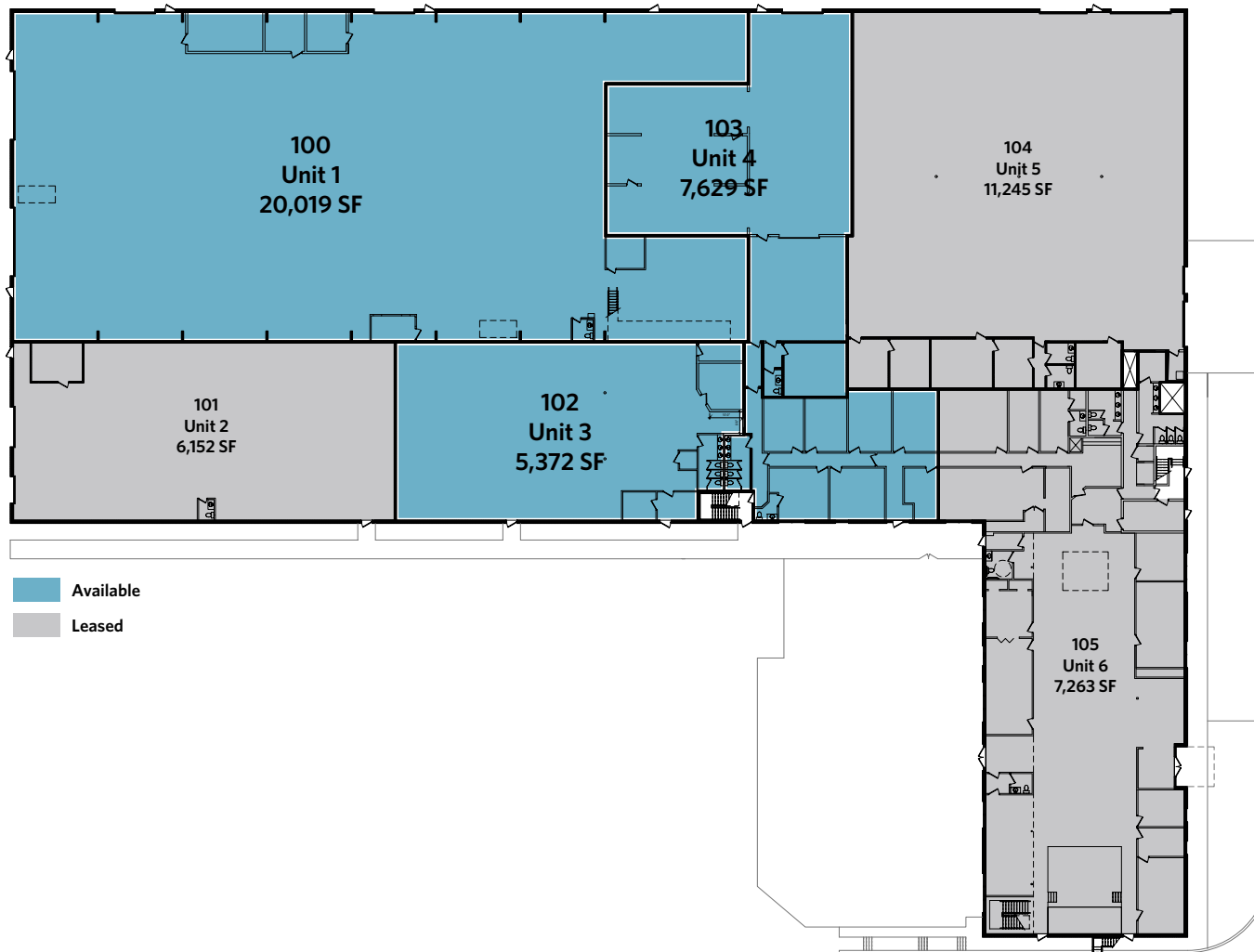
100 West Road, Suite 505  
Baltimore, MD 21204  
klnb.com

**NAI**klnb



# 10939 PHILADELPHIA RD

10939 Philadelphia Road, White Marsh, MD 21162  
Baltimore County



SPACE AVAILABLE

**Christopher Wright**  
cwright@klnb.com  
443-914-2600

**Peter Dudley**  
pdudley@klnb.com  
443-632-2064

**Ryan Paszkiewicz**  
rpaszkiewicz@klnb.com  
443-632-2062

100 West Road, Suite 505  
Baltimore, MD 21204  
[klnb.com](http://klnb.com)



# 10939 PHILADELPHIA RD

10939 Philadelphia Road, White Marsh, MD 21162  
Baltimore County

[CLICK TO VIEW PROPERTY WEBSITE](#)

For More Information, Please Contact:

**Christopher Wright**

[cwright@klnb.com](mailto:cwright@klnb.com)

443-914-2600

**Peter Dudley**

[pdudley@klnb.com](mailto:pdudley@klnb.com)

443-632-2064

**Ryan Paszkiewicz**

[rpaszkiewicz@klnb.com](mailto:rpaszkiewicz@klnb.com)

443-632-2062

100 West Road, Suite 505  
Baltimore, MD 21204

[klnb.com](http://klnb.com)

 [facebook.com/KLNBCRE](https://facebook.com/KLNBCRE)

 [linkedin.com/company/klnbcre](https://linkedin.com/company/klnbcre)

 [instagram.com/klnbcre](https://instagram.com/klnbcre)

While we have no reason to doubt the accuracy of any of the information supplied, we cannot, and do not, guarantee its accuracy. All information should be independently verified prior to a purchase or lease of the property. We are not responsible for errors, omissions, misuse, or misinterpretation of information contained herein and make no warranty of any kind, express or implied, with respect to the property or any other matters.

**NAI** klnb