

JOIN THESE RETAILERS:

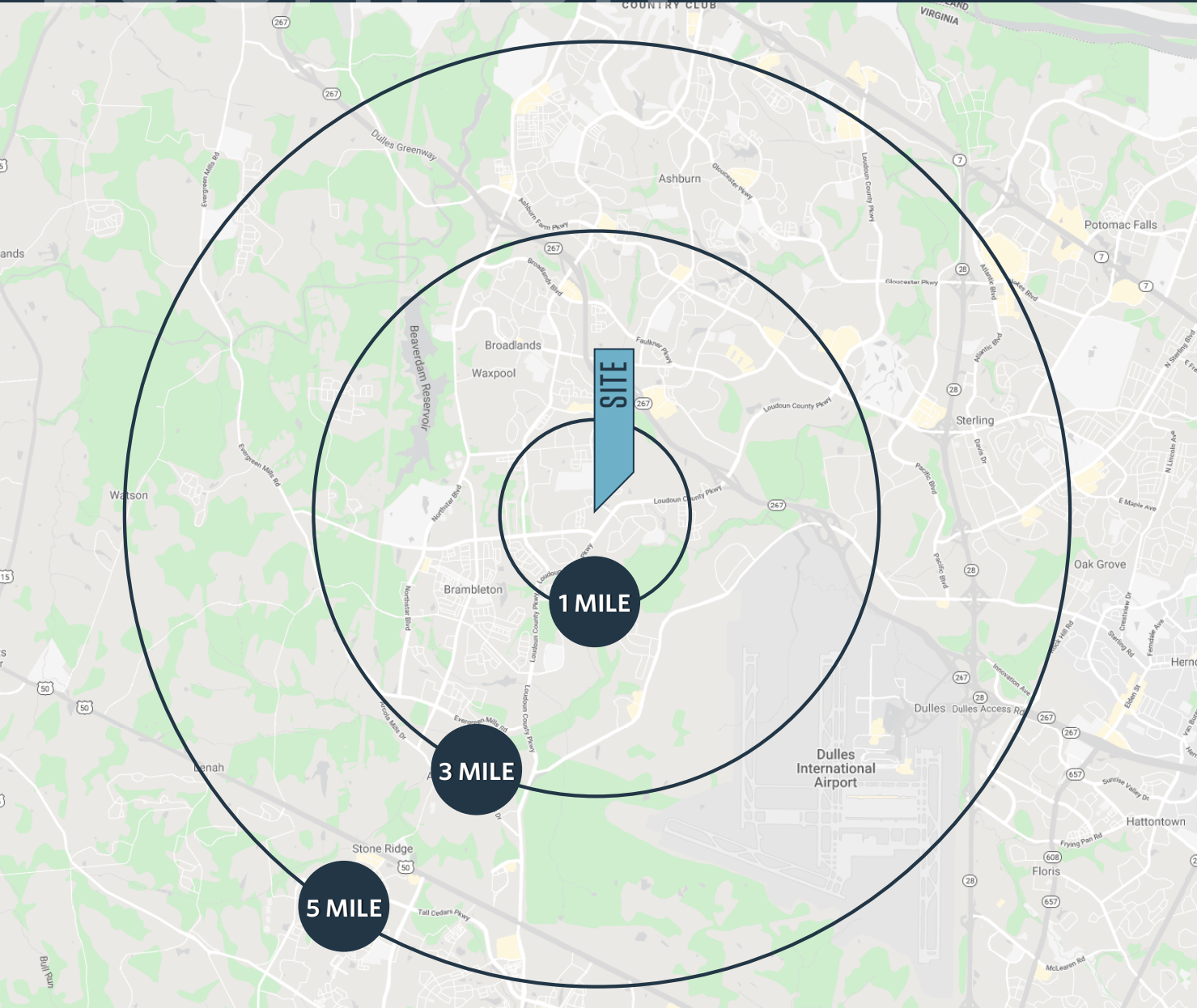


- 1 mile away from Ashburn Metro Station.
- TGM Moorefield is a 3-story luxury apartment complex offering 413 residential units with first floor retail/service space.
- In the middle of Loudoun Counties major growth area with an average household income of \$223,263 (Esri, 2023) within a 3-mile radius.
- Gas station coming at the intersection of Loudoun County Pkwy. & Ryan Rd. along with additional retailers.

LOCATION

MOOREFIELD VILLAGE RETAIL

22621 & 22556 AMENDOLA TERRACE, ASHBURN, VA 20148, LOUDOUN COUNTY



DEMOGRAPHICS | 2023:

1-MILE	3-MILE	5-MILE
Population		
14,401	79,050	165,316
Daytime Population		
9,029	63,106	159,257
Households		
4519	25,840	56,103
Average HH Income		
\$221,444	\$223,263	\$206,912

[CLICK TO DOWNLOAD DEMOGRAPHIC REPORT](#)

TRAFFIC COUNTS | 2022:

Mooreview Parkway	6,423 ADT
Ryan Road	2,616 ADT
Loudoun County Parkway	28,742 ADT

DALLON L. CHENEY

dcheney@klnb.com | 703-268-2703

ALEX WILLNER

awillner@klnb.com | 703-268-2718



SITE PLAN

MOOREFIELD VILLAGE RETAIL

22621 & 22556 AMENDOLA TERRACE, ASHBURN, VA 20148, LOUDOUN COUNTY

AVAILABLE SPACE

SIZE	RATE	CONDITION	DELIVERY
SUITE 125 1,384 SF	\$29.00 PSF NNN	VANILLA SHELL (FORMER DRY CLEANER)	IMMEDIATE
SUITE 150 1,472 SF	\$36.00 PSF NNN	CDS + ADA BATHROOM	IMMEDIATE
SUITE 153 2,493 SF	\$35.00 PSF NNN	VANILLA SHELL (FORMER EDUCATION CENTER)	IMMEDIATE
SUITE 165 841 SF	\$36.00 PSF NNN	VANILLA SHELL (FORMER INSURANCE OFFICE)	IMMEDIATE

*Est. NNN: \$9.56 PSF

AVAILABLE
 AT LEASE
 LEASED



FUTURE GAS STATION

FUTURE GAS STATION



DALLON L. CHENEY

dcheney@klnb.com | 703-268-2703

ALEX WILLNER

awillner@klnb.com | 703-268-2718



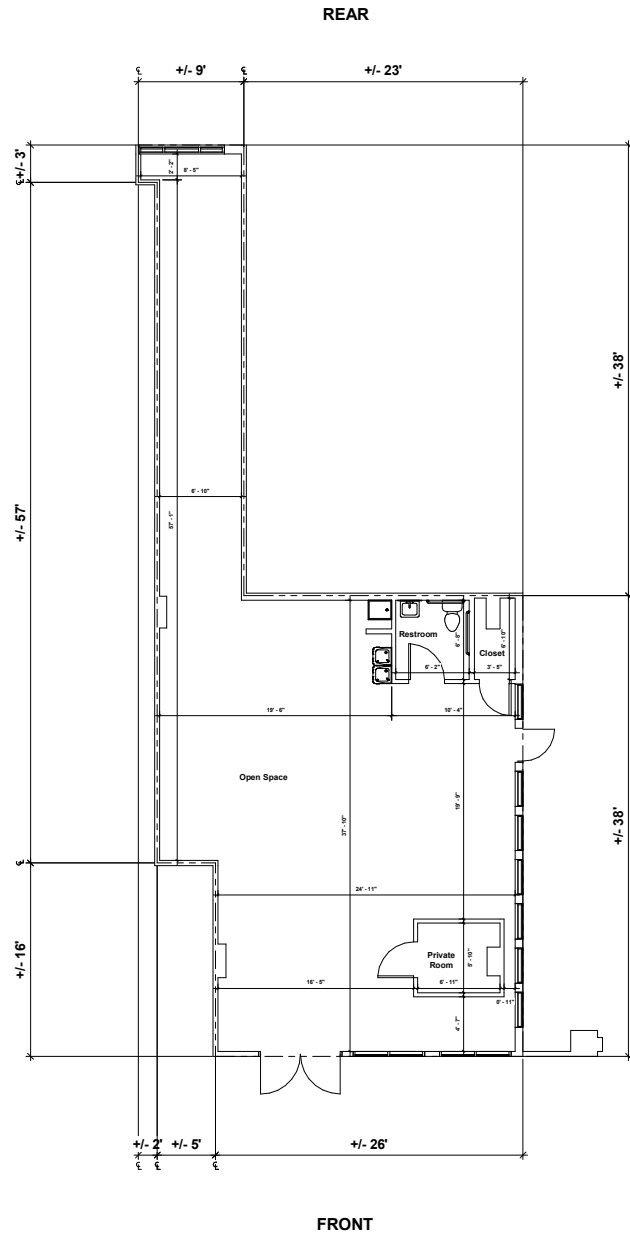
SPACE PLAN

MOOREFIELD VILLAGE RETAIL

22621 & 22556 AMENDOLA TERRACE, ASHBURN, VA 20148, LOUDOUN COUNTY

SUITE 125
1,384 SF

VIEW ID PLANS



DALLON L. CHENEY

dcheney@klnb.com | 703-268-2703

ALEX WILLNER

awillner@klnb.com | 703-268-2718

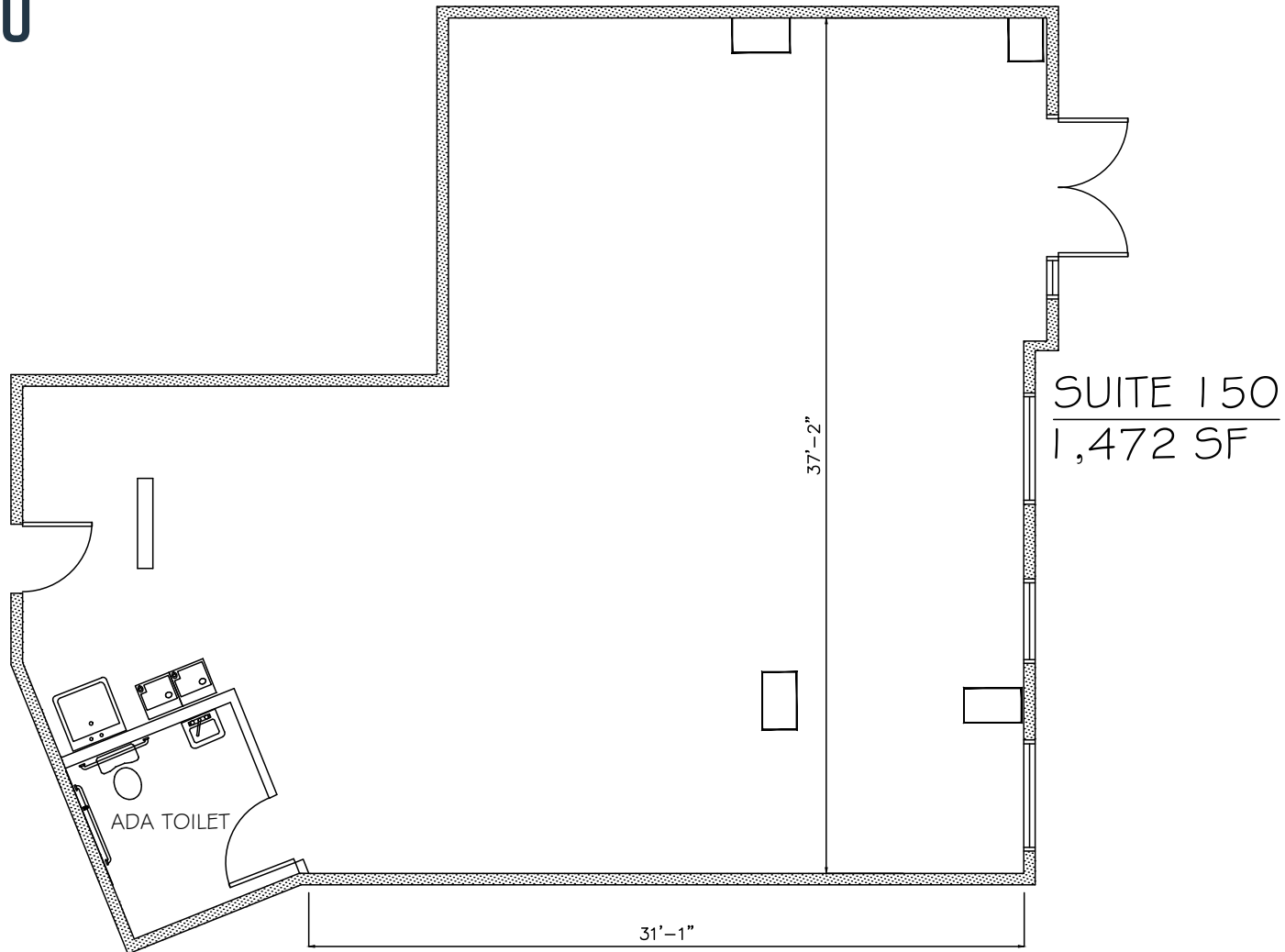


SPACE PLAN

MOOREFIELD VILLAGE RETAIL

22621 & 22556 AMENDOLA TERRACE, ASHBURN, VA 20148, LOUDOUN COUNTY

SUITE 150
1,472 SF



DALLON L. CHENEY

dcheney@klnb.com | 703-268-2703

ALEX WILLNER

awillner@klnb.com | 703-268-2718



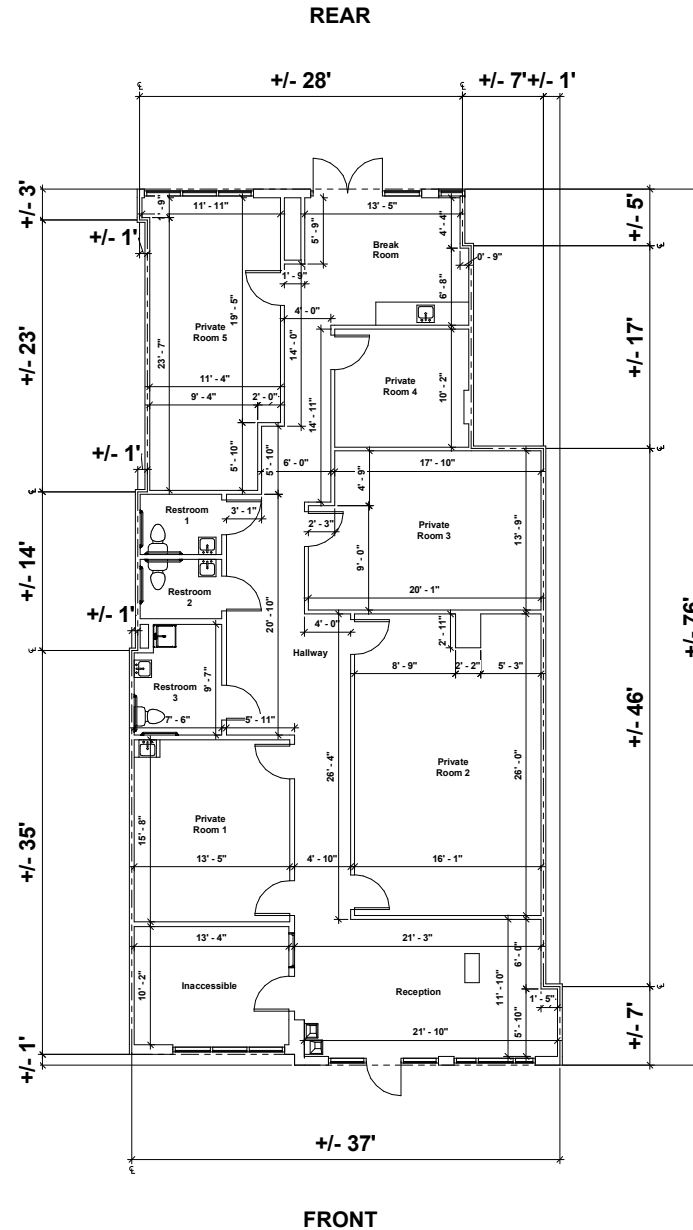
SPACE PLAN

MOOREFIELD VILLAGE RETAIL

22621 & 22556 AMENDOLA TERRACE, ASHBURN, VA 20148, LOUDOUN COUNTY

SUITE 153
2,500 SF

VIEW ID PLANS

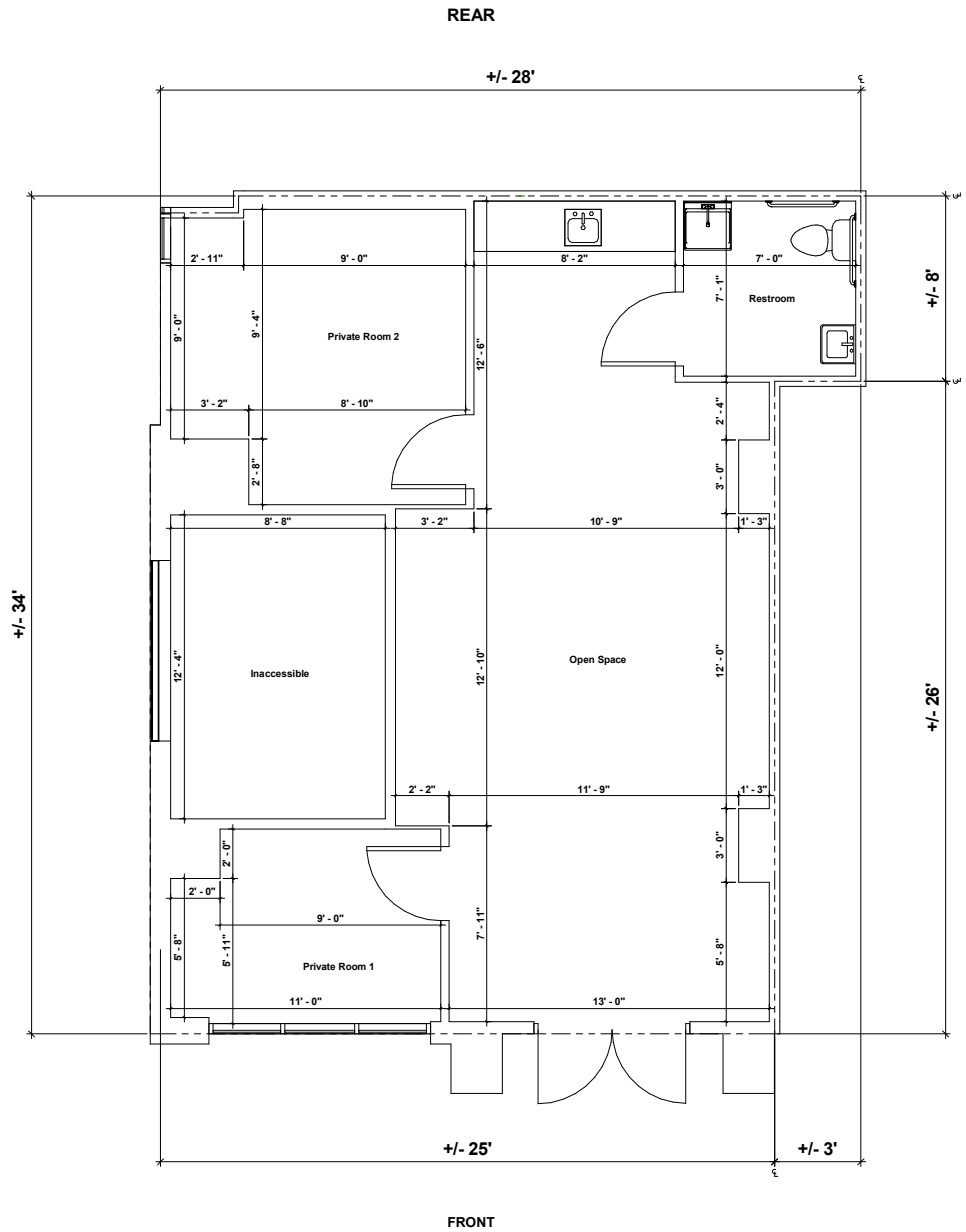


SPACE PLAN | MOOREFIELD VILLAGE RETAIL

22621 & 22556 AMENDOLA TERRACE, ASHBURN, VA 20148, LOUDOUN COUNTY

SUITE 165
881 SF

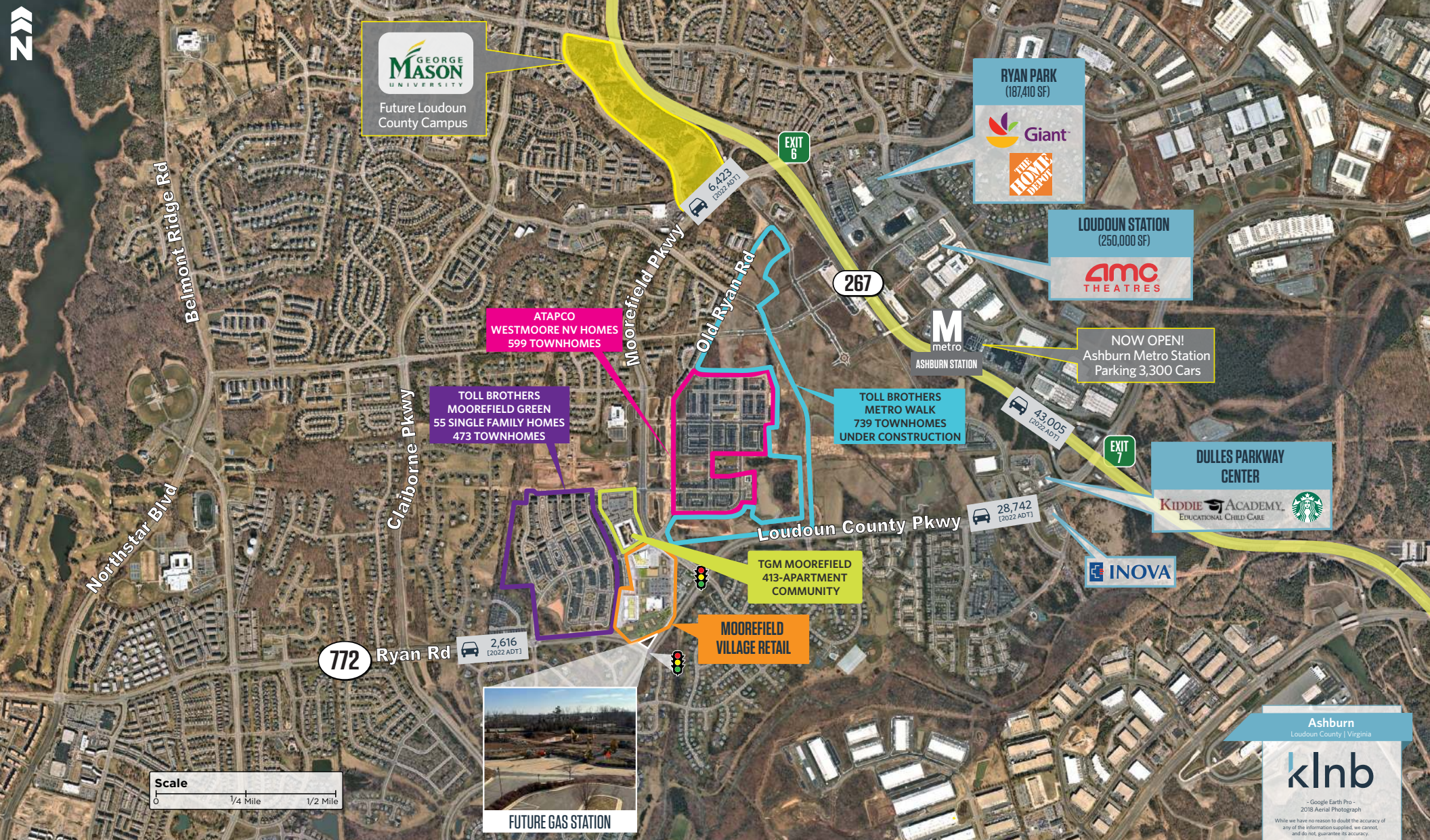
[VIEW ID PLANS](#)



CLOSE-UP

MOOREFIELD VILLAGE RETAIL

22621 & 22556 AMENDOLA TERRACE, ASHBURN, VA 20148, LOUDOUN COUNTY



DALLON L. CHENEY

dcheney@klnb.com | 703-268-2703

ALEX WILLNER

awillner@klnb.com | 703-268-2718

klnb

Ashburn
Loudoun County | Virginia

klnb

- Google Earth Pro -
2018 Aerial Photograph

While we have no reason to doubt the accuracy of any of the information supplied, we cannot, and do not, guarantee its accuracy.

AERIAL

MOOREFIELD VILLAGE RETAIL

22621 & 22556 AMENDOLA TERRACE, ASHBURN, VA 20148, LOUDOUN COUNTY



DALLON L. CHENEY

dcheney@klnb.com | 703-268-2703

ALEX WILLNER

awillner@klnb.com | 703-268-2718





MOOREFIELD VILLAGE RETAIL

22621 & 22556 AMENDOLA TERRACE, ASHBURN, VA 20148, LOUDOUN COUNTY

FOR MORE INFORMATION, PLEASE CONTACT:

DALLON L. CHENEY

dcheney@klnb.com

703-268-2703

ALEX WILLNER

awillner@klnb.com

703-268-2718

8065 Leesburg Pike, Suite 700, Tysons, VA 22182

.....
klnb.com



[instagram.com/klnbcre](https://www.instagram.com/klnbcre)



[linkedin.com/company/klnb](https://www.linkedin.com/company/klnb)



[facebook.com/KLNBCRE](https://www.facebook.com/KLNBCRE)

CLICK TO VIEW PROPERTY WEBSITE

While we have no reason to doubt the accuracy of any of the information supplied, we cannot, and do not, guarantee its accuracy. All information should be independently verified prior to a purchase or lease of the property. We are not responsible for errors, omissions, misuse, or misinterpretation of information contained herein and make no warranty of any kind, express or implied, with respect to the property or any other matters.