

9030 RED BRANCH RD

Columbia, Maryland 21045
Howard County

NEW LISTING!



FOR LEASE

AVAILABLE SUITES

- Suite 130: 1,173 SF
- Suite 150: 1,808 SF
- Suite 190: 1,556 SF
- Suite 200: 2,578 SF
- Suite 210: +3,000 - 5,975 SF
- Suite 230: 810 SF

BUILDING HIGHLIGHTS

- Total Building Size: 20,325 square feet
- Ample parking
- Easy access to Rt. 108, Rt. 29, Rt. 100, Rt. 175 & I-95
- Conveniently located and close to Circuit Court of Howard County
- Elevator served and ADA compliant

NEARBY AMENITIES



POPEYES



Abby Glassberg
aglassberg@klnb.com
443-574-1433

Austin Eber
aeber@klnb.com
443-574-1414

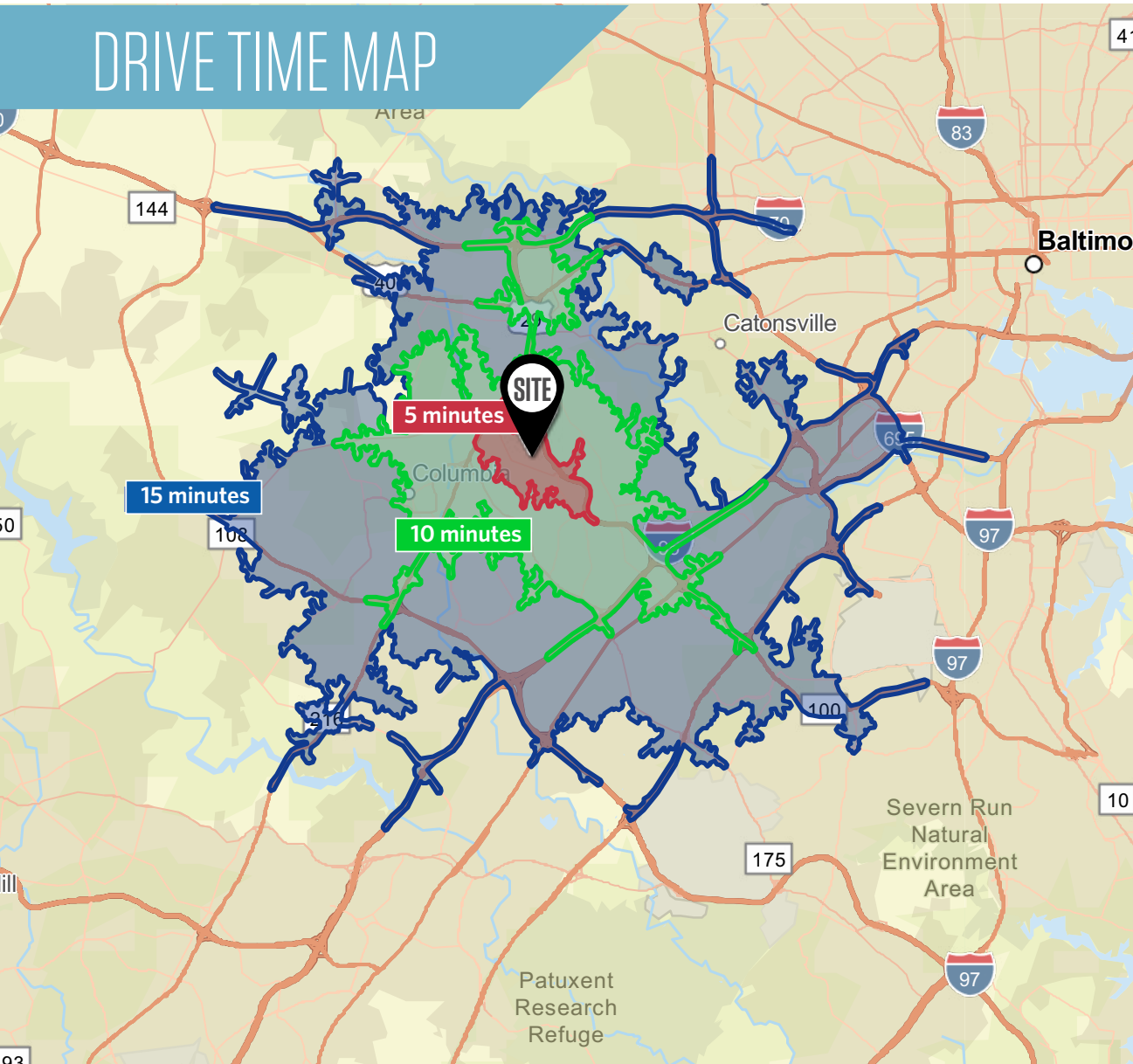
9881 Broken Land Pkwy, #300
Columbia, MD 21046
klnb.com

NAI klnb

9030 RED BRANCH RD

Columbia, Maryland 21045
Howard County

DRIVE TIME MAP



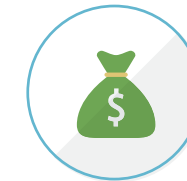
DEMOGRAPHICS | 3 MILE



POPULATION
11,881



HOUSEHOLDS
4,423



**AVERAGE
HH INCOME**
\$173,052



**MEDIAN
AGE**
39.9



**DISPOSABLE
INCOME**
\$115,360



**MEDIUM
NETWORTH**
\$494,898

Abby Glassberg
aglassberg@klnb.com
443-574-1433

Austin Eber
aeber@klnb.com
443-574-1414

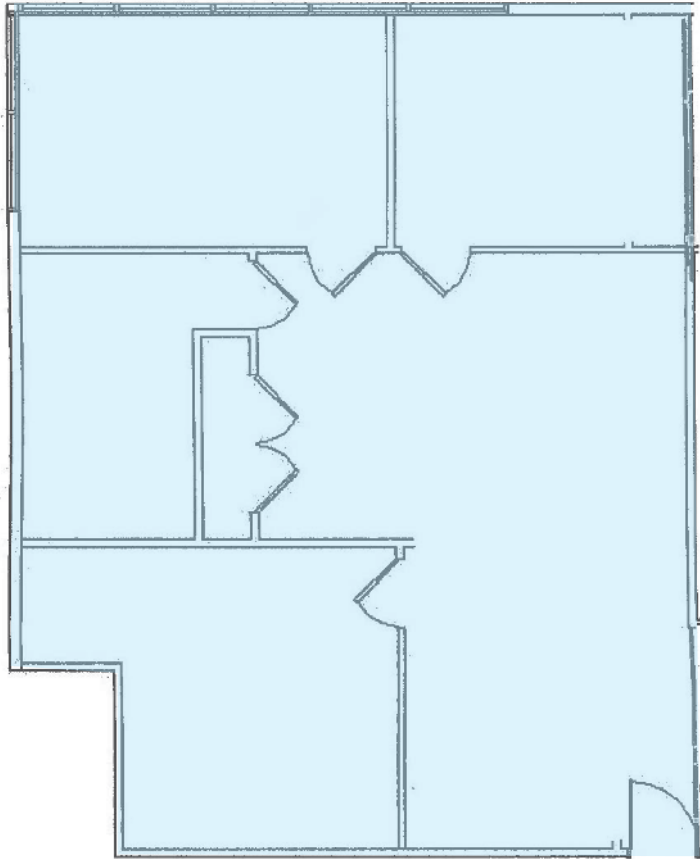
9881 Broken Land Pkwy, #300
Columbia, MD 21046
klnb.com



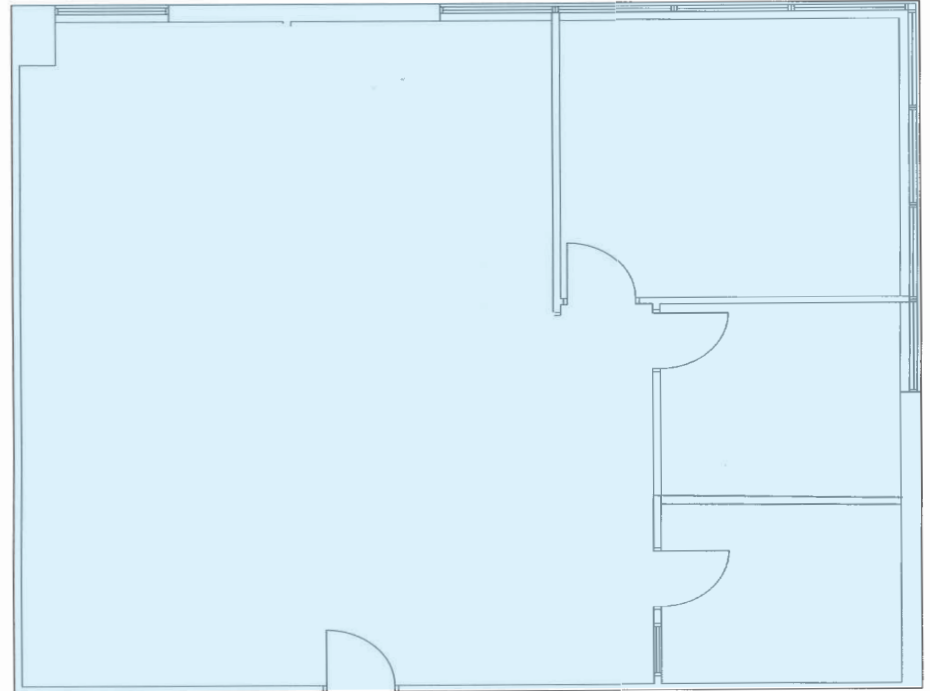
9030 RED BRANCH RD

Columbia, Maryland 21045
Howard County

Suite 130
1,173 SF



Suite 150
1,808 SF



FLOOR PLANS

Abby Glassberg
aglassberg@klnb.com
443-574-1433

Austin Eber
aeber@klnb.com
443-574-1414

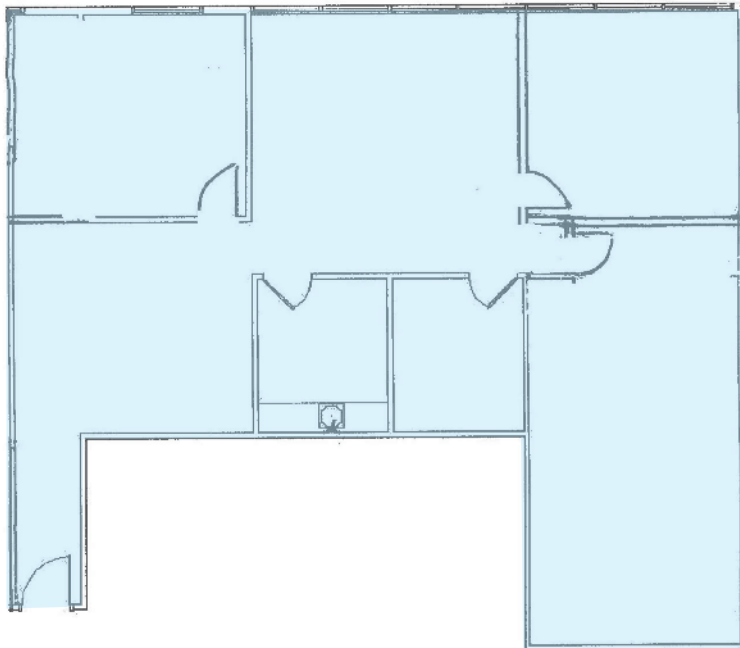
9881 Broken Land Pkwy, #300
Columbia, MD 21046
klnb.com

NAI klnb

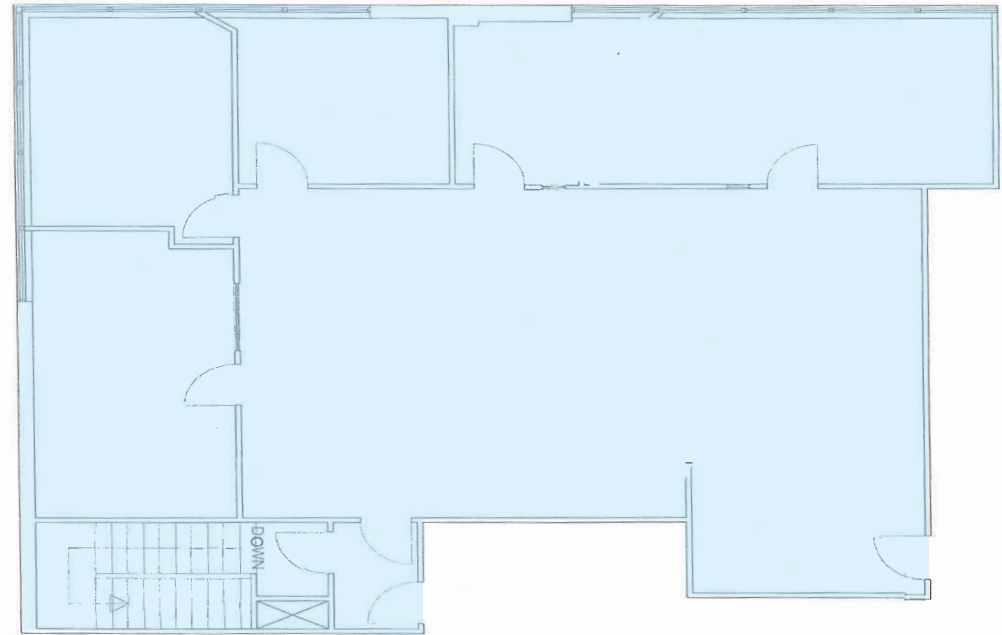
9030 RED BRANCH RD

Columbia, Maryland 21045
Howard County

Suite 190
1,556 SF



Suite 200
2,578 SF



FLOOR PLANS

Abby Glassberg
aglassberg@klnb.com
443-574-1433

Austin Eber
aeber@klnb.com
443-574-1414

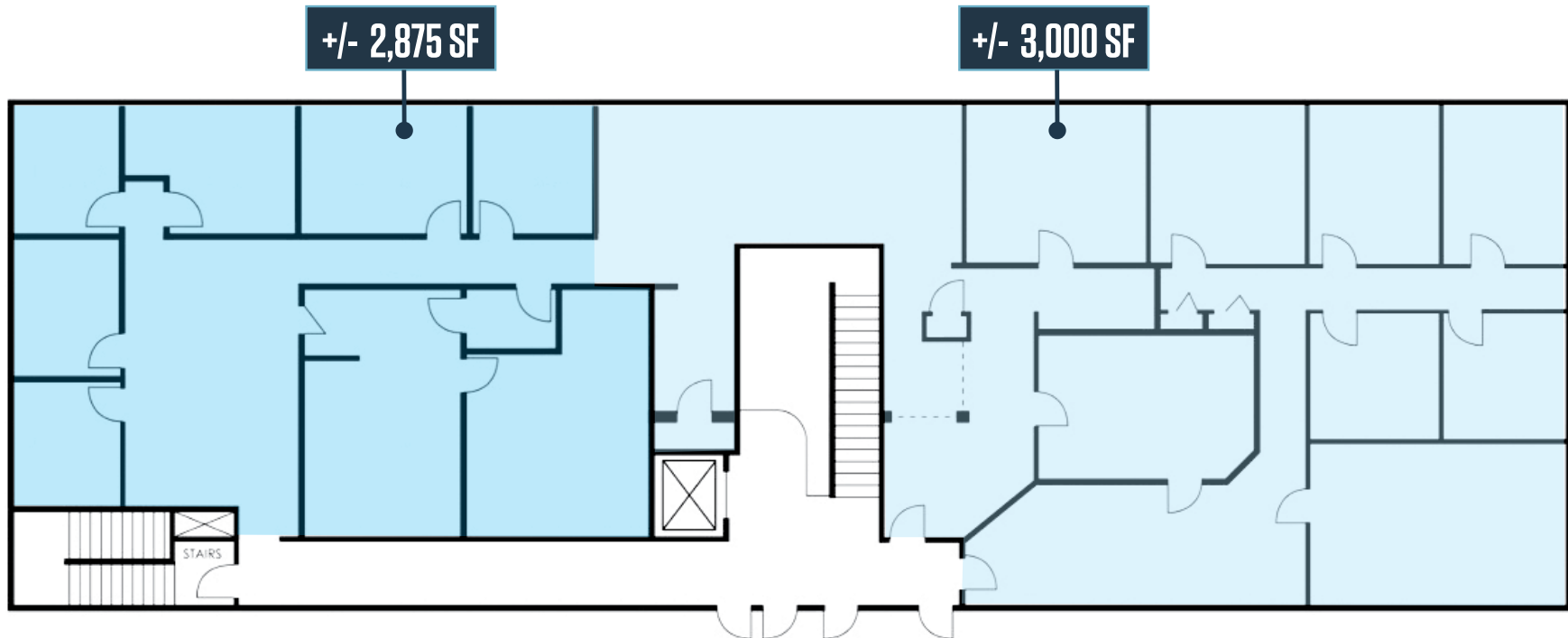
9881 Broken Land Pkwy, #300
Columbia, MD 21046
klnb.com

NAI klnb

9030 RED BRANCH RD

Columbia, Maryland 21045
Howard County

Suite 210
+/- 3,000 - 5,975 SF



FLOOR PLAN

Abby Glassberg
aglassberg@klnb.com
443-574-1433

Austin Eber
aeber@klnb.com
443-574-1414

9881 Broken Land Pkwy, #300
Columbia, MD 21046
klnb.com



9030 RED BRANCH RD

Columbia, Maryland 21045
Howard County



PHOTOS

Abby Glassberg
aglassberg@klnb.com
443-574-1433

Austin Eber
aeber@klnb.com
443-574-1414

9881 Broken Land Pkwy, #300
Columbia, MD 21046
klnb.com



9030 RED BRANCH RD

Columbia, Maryland 21045
Howard County



Abby Glassberg
aglassberg@klnb.com
443-574-1433

Austin Eber
aeber@klnb.com
443-574-1414

9881 Broken Land Pkwy, #300
Columbia, MD 21046
klnb.com



9030 RED BRANCH RD

Columbia, Maryland 21045
Howard County

[CLICK TO VIEW PROPERTY WEBSITE](#)

For More Information, Please Contact:

Abby Glassberg

aglassberg@klnb.com
443-574-1433

Austin Eber

aeber@klnb.com
443-574-1414

9881 Broken Land Parkway, Suite 300
Columbia, MD 21046

klnb.com



[instagram.com/klnbcre](https://www.instagram.com/klnbcre)



[linkedin.com/company/klnb](https://www.linkedin.com/company/klnb)



[facebook.com/KLNBCRE](https://www.facebook.com/KLNBCRE)

While we have no reason to doubt the accuracy of any of the information supplied, we cannot, and do not, guarantee its accuracy. All information should be independently verified prior to a purchase or lease of the property. We are not responsible for errors, omissions, misuse, or misinterpretation of information contained herein and make no warranty of any kind, express or implied, with respect to the property or any other matters.