

# BANNEKER BUILDING

5840 Banneker Road, Columbia, Maryland  
Howard County



## AVAILABLE SUITES

- **Suite 200:** 2,582 SF
- **Suite 230:** 3,605 SF

- Conveniently located near Downtown Columbia
- Easy access to I-95, Route 29, and Route 32
- Blocks away from Columbia Mall, Howard Community College and Howard County General Hospital
- Great window lines
- Flexible lease terms
- Free surface parking

## NEARBY AMENITIES



WELLS FARGO



Abby Glassberg  
aglassberg@klnb.com  
443-574-1422

Steele Stanwick  
sstanwick@klnb.com  
443-574-1420

Austin Eber  
aeber@klnb.com  
443-574-1414

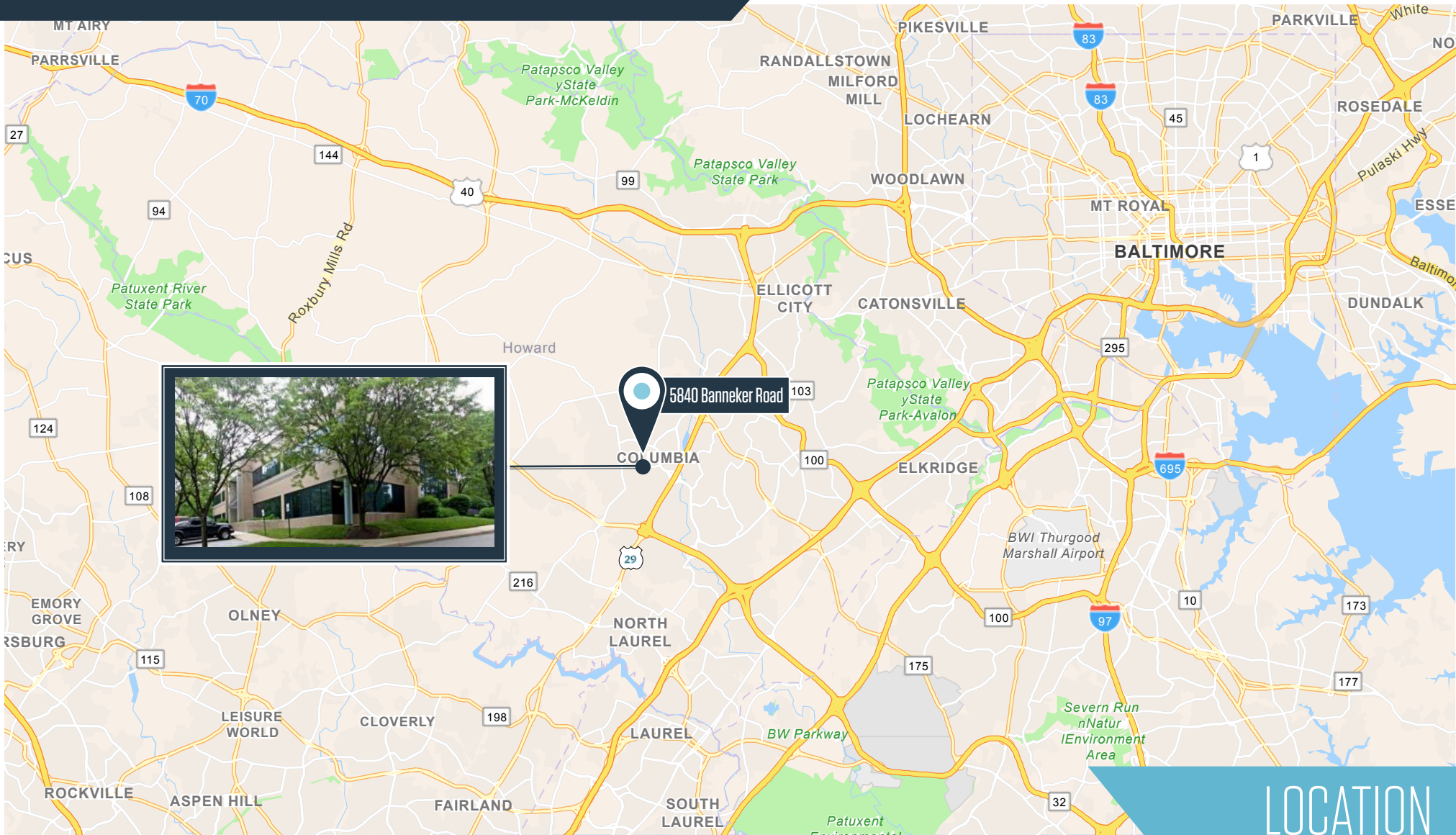
9881 Broken Land Pkwy, #300  
Columbia, MD 21043  
klnb.com





# BANNEKER BUILDING

5840 Banneker Road, Columbia, Maryland  
Howard County



LOCATION

**Abby Glassberg**  
aglassberg@klnb.com  
443-574-1422

**Steele Stanwick**  
sstanwick@klnb.com  
443-574-1420

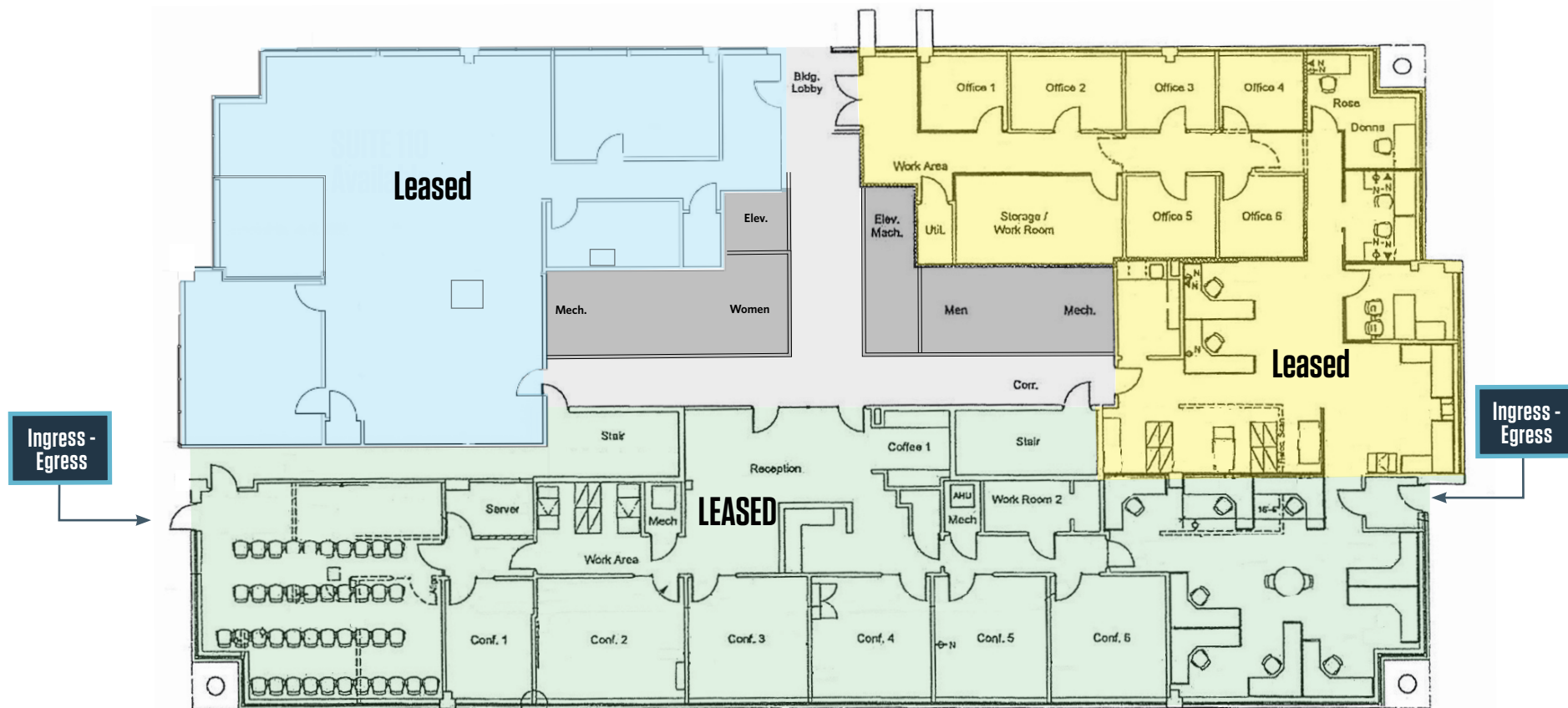
**Austin Eber**  
aeber@klnb.com  
443-574-1414

9881 Broken Land Pkwy, #300  
Columbia, MD 21043  
**klnb.com**



# BANNEKER BUILDING

5840 Banneker Road, Columbia, Maryland  
Howard County



## FLOOR PLANS

Abby Glassberg  
aglassberg@klnb.com  
443-574-1422

Steele Stanwick  
sstanwick@klnb.com  
443-574-1420

Austin Eber  
aeber@klnb.com  
443-574-1414

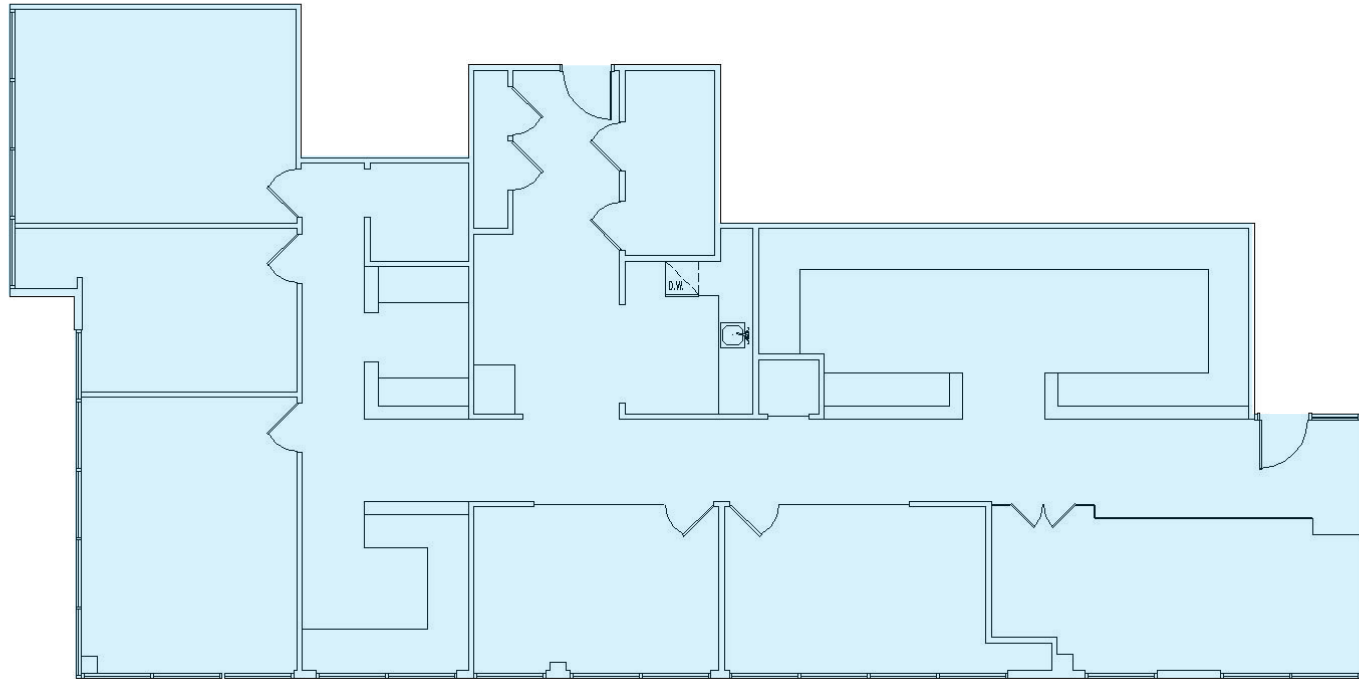
9881 Broken Land Pkwy, #300  
Columbia, MD 21043  
klnb.com

**NA**klnb

# BANNEKER BUILDING

5840 Banneker Road, Columbia, Maryland  
Howard County

SUITE 200  
2,582 SF



FLOOR PLANS

**Abby Glassberg**  
aglassberg@klnb.com  
443-574-1422

**Steele Stanwick**  
sstanwick@klnb.com  
443-574-1420

**Austin Eber**  
aeber@klnb.com  
443-574-1414

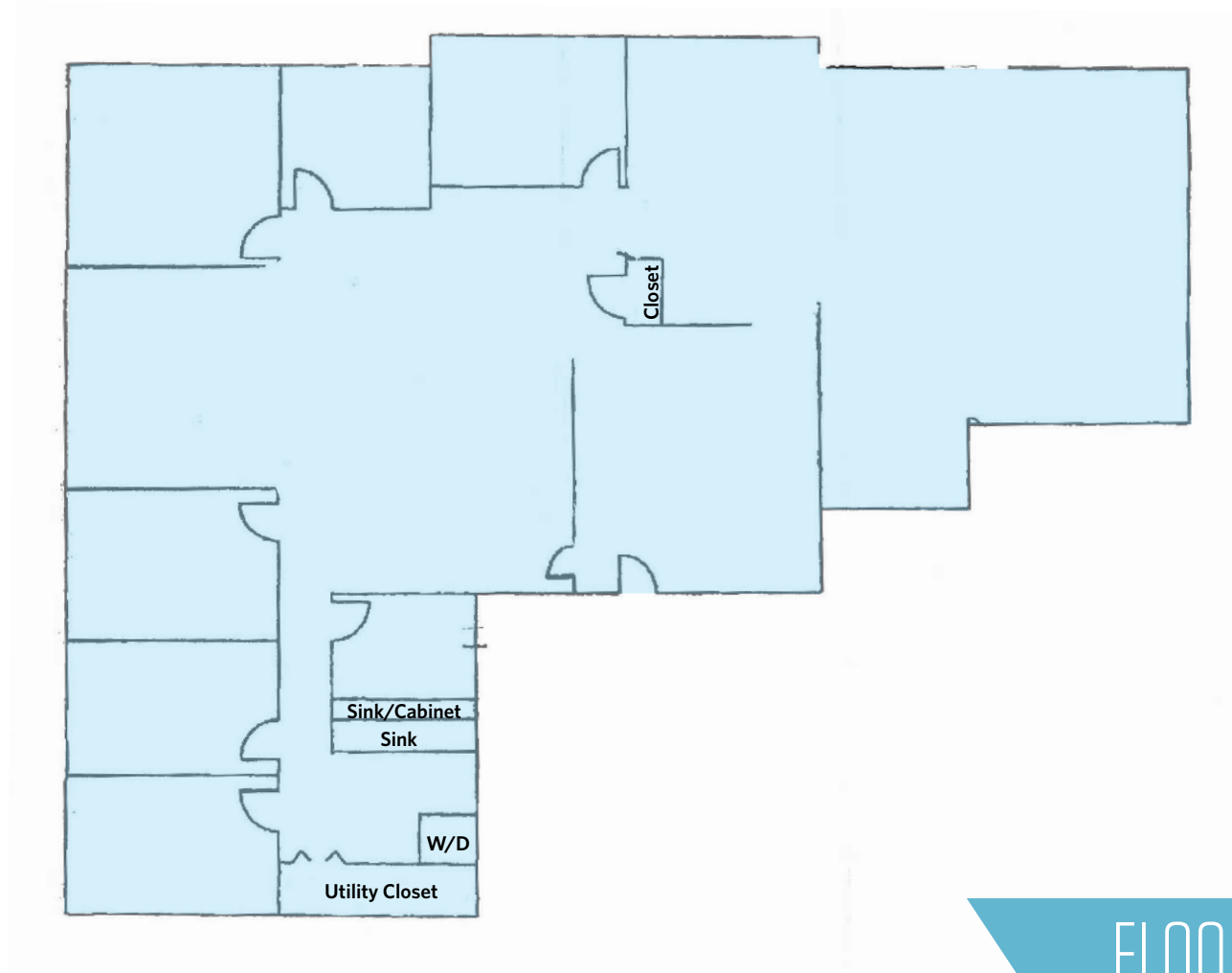
9881 Broken Land Pkwy, #300  
Columbia, MD 21043  
**klnb.com**

**NAI**klnb

# BANNEKER BUILDING

5840 Banneker Road, Columbia, Maryland  
Howard County

SUITE 230  
3,605 SF



FLOOR PLANS

**Abby Glassberg**  
aglassberg@klnb.com  
443-574-1422

**Steele Stanwick**  
sstanwick@klnb.com  
443-574-1420

**Austin Eber**  
aeber@klnb.com  
443-574-1414

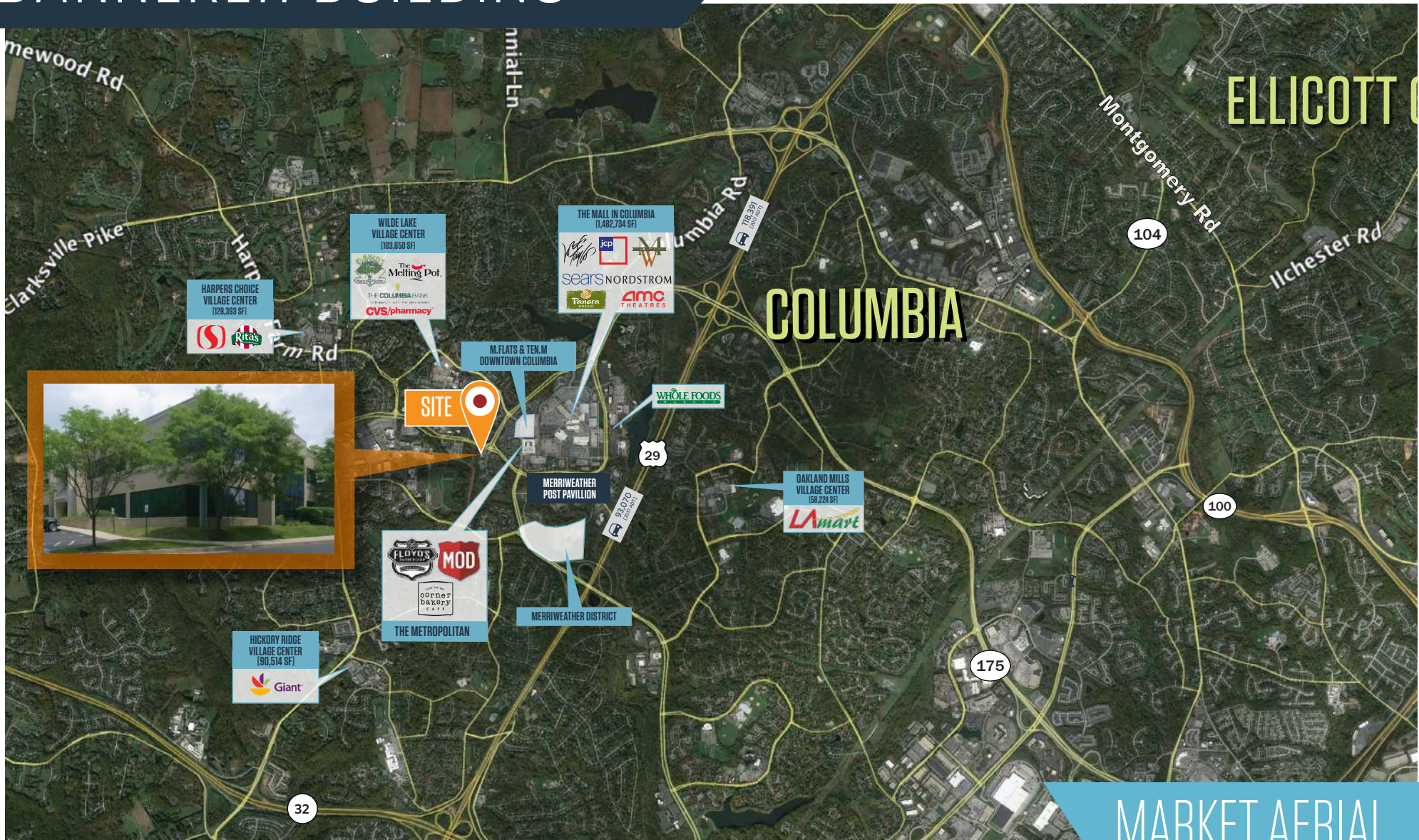
9881 Broken Land Pkwy, #300  
Columbia, MD 21043  
[klnb.com](http://klnb.com)

**NAI**klnb



# BANNEKER BUILDING

5840 Banneker Road, Columbia, Maryland  
Howard County



Abby Glassberg  
aglassberg@klnb.com  
443-574-1422

Steele Stanwick  
sstanwick@klnb.com  
443-574-1420

Austin Eber  
aeber@klnb.com  
443-574-1414

9881 Broken Land Pkwy, #300  
Columbia, MD 21043  
klnb.com



# BANNEKER BUILDING

5840 Banneker Road, Columbia, Maryland  
Howard County

CLICK TO VIEW PROPERTY WEBSITE

For More Information, Please Contact:

**Abby Glassberg**

aglassberg@klnb.com  
443-574-1433

**Steele Stanwick**

sstanwick@klnb.com  
443-574-1420

**Austin Eber**

aeber@klnb.com  
443-574-1414

9881 Broken Land Parkway, Suite 300  
Columbia, MD 21046

[klnb.com](http://klnb.com)



[instagram.com/klnbcre](https://www.instagram.com/klnbcre)



[linkedin.com/company/klnb](https://www.linkedin.com/company/klnb)



[facebook.com/KLNBCRE](https://www.facebook.com/KLNBCRE)

While we have no reason to doubt the accuracy of any of the information supplied, we cannot, and do not, guarantee its accuracy. All information should be independently verified prior to a purchase or lease of the property. We are not responsible for errors, omissions, misuse, or misinterpretation of information contained herein and make no warranty of any kind, express or implied, with respect to the property or any other matters.

**NAI** klnb