



NEARBY ATTRACTIONS



CORNER BUILDING FOR LEASE

- Rare corner parcel in upper NW with approximately 12 dedicated parking
- 2nd generation bank building with drive thru
- Easily accessible at full movement traffic signal at Wisconsin Ave (22,861 ADT) and Harrison Street (1,515 ADT)
- 1 block to Friendship Heights Metro (2,910 RPD)
- Approximately 6,200 SF Full Building Available
 - 2,063 SF Basement
 - 2,063 SF Street Level with Drive Thru
 - 2,063 SF 2nd Level

MATT SKALET

maskalet@klnb.com | 202-420-7775

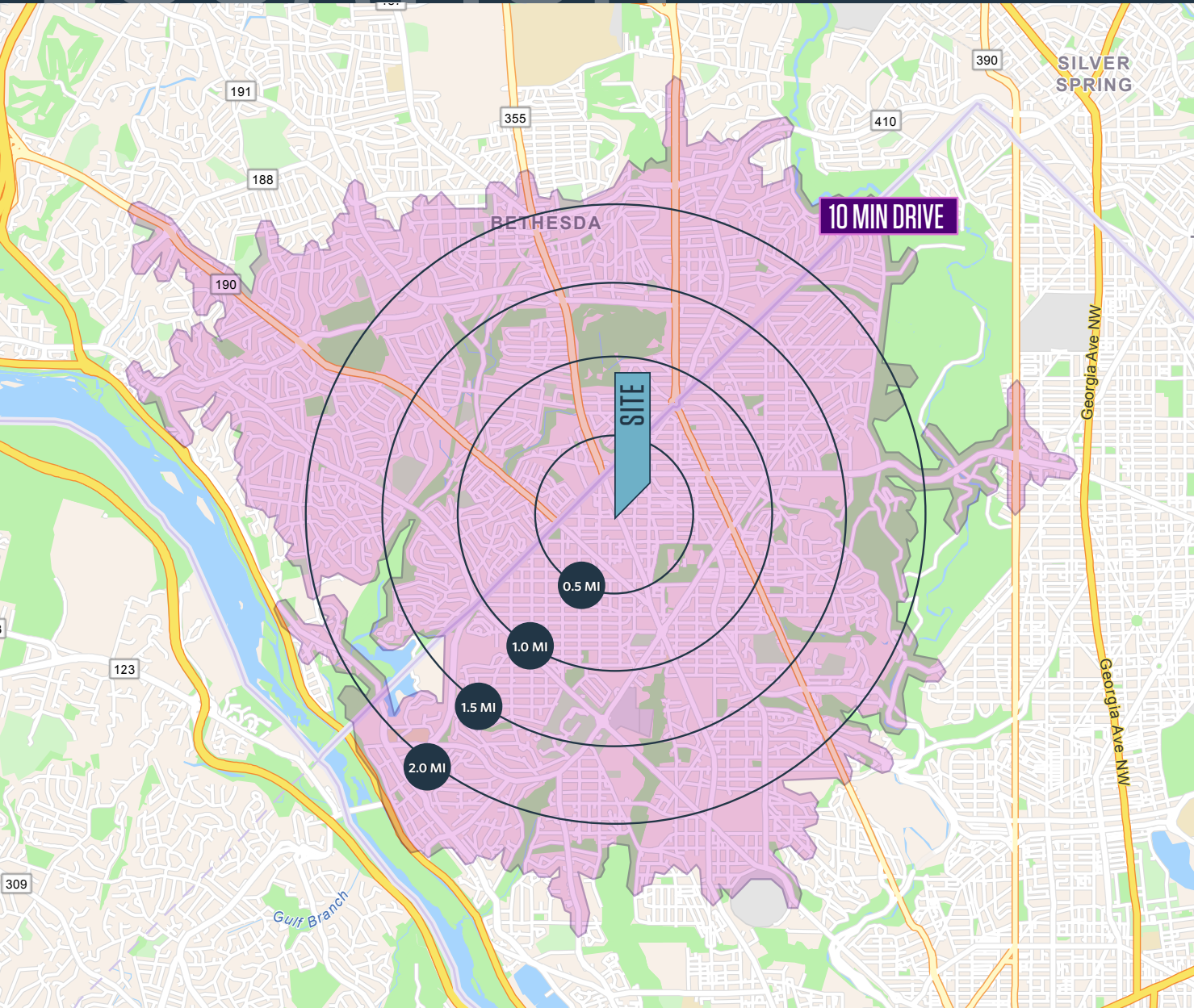
KELLY ATKINSON

katkinson@klnb.com | 202-420-7762

LOCATION

5200 WISCONSIN AVE NW

WASHINGTON, DC 20015



DEMOGRAPHICS | 2024:

10 MIN DRIVE	.5-MILE	1-MILE	1.5 MILE	2 MILE	
Population	121,478	8,475	31,851	58,320	96,050
Daytime Population	157,330	18,328	41,651	71,391	128,886
Households	55,170	4,172	14,644	25,005	43,546
Average HH Income	\$233,439	\$200,344	\$226,683	\$232,600	\$229,545

TRAFFIC COUNTS | 2023:

Wisconsin Ave NW	22,861 ADT
Harrison St NW	1,515 ADT
Walk Score	83 Very Walkable
Friendship Heights Metro	2,910 RPD
Tenleytown Metro	2,817 RPD

MATT SKALET

maskalet@klnb.com | 202-420-7775

KELLY ATKINSON

katkinson@klnb.com | 202-420-7762



Upper NW
Washington | District of Columbia

klnb

- Google Earth Pro -
2019 Aerial Photograph

While we have no reason to doubt the accuracy of any of the information supplied, we cannot, and do not, guarantee its accuracy.



PHOTO

5200 WISCONSIN AVE NW

WASHINGTON, DC 20015



MATT SKALET

maskalet@klnb.com | 202-420-7775

KELLY ATKINSON

katkinson@klnb.com | 202-420-7762

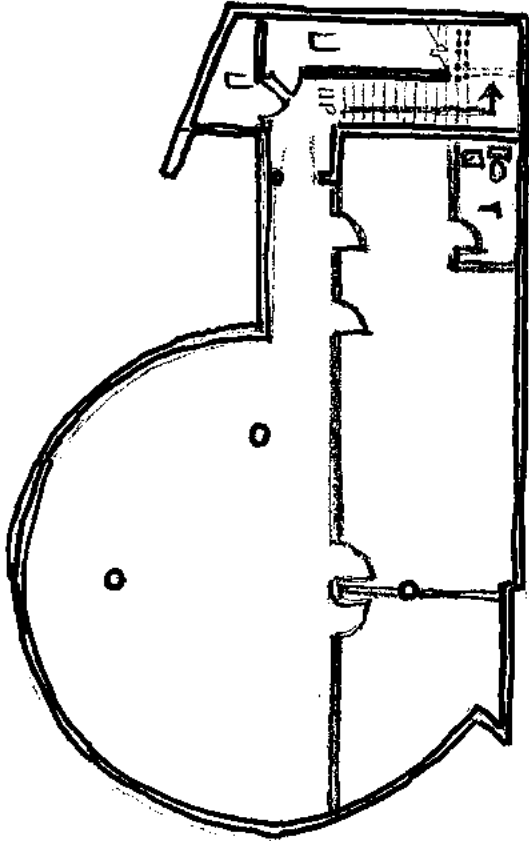
klnb

SITE PLAN

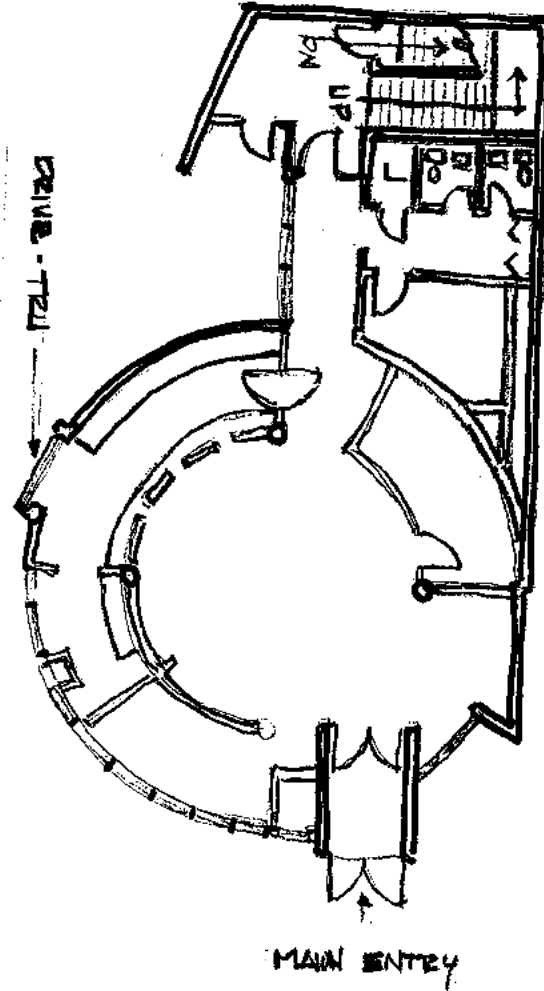
5200 WISCONSIN AVE NW

WASHINGTON, DC 20015

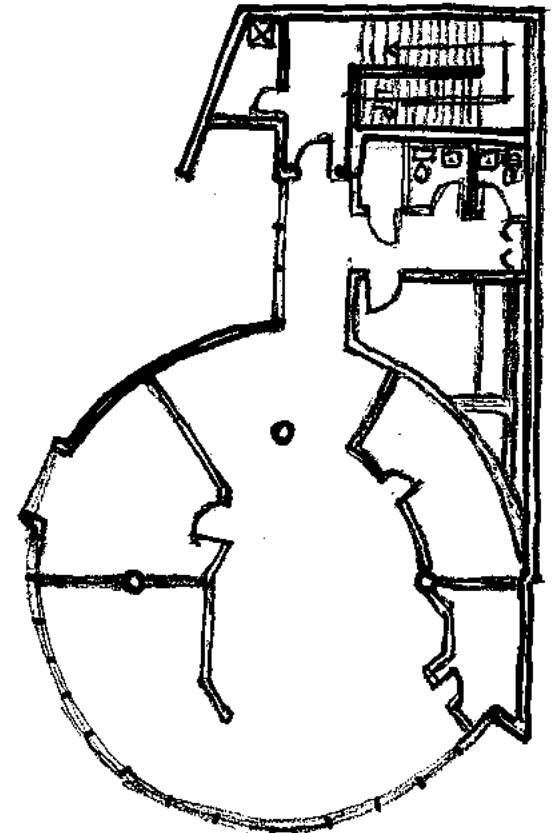
BASEMENT



FIRST FLOOR



SECOND FLOOR



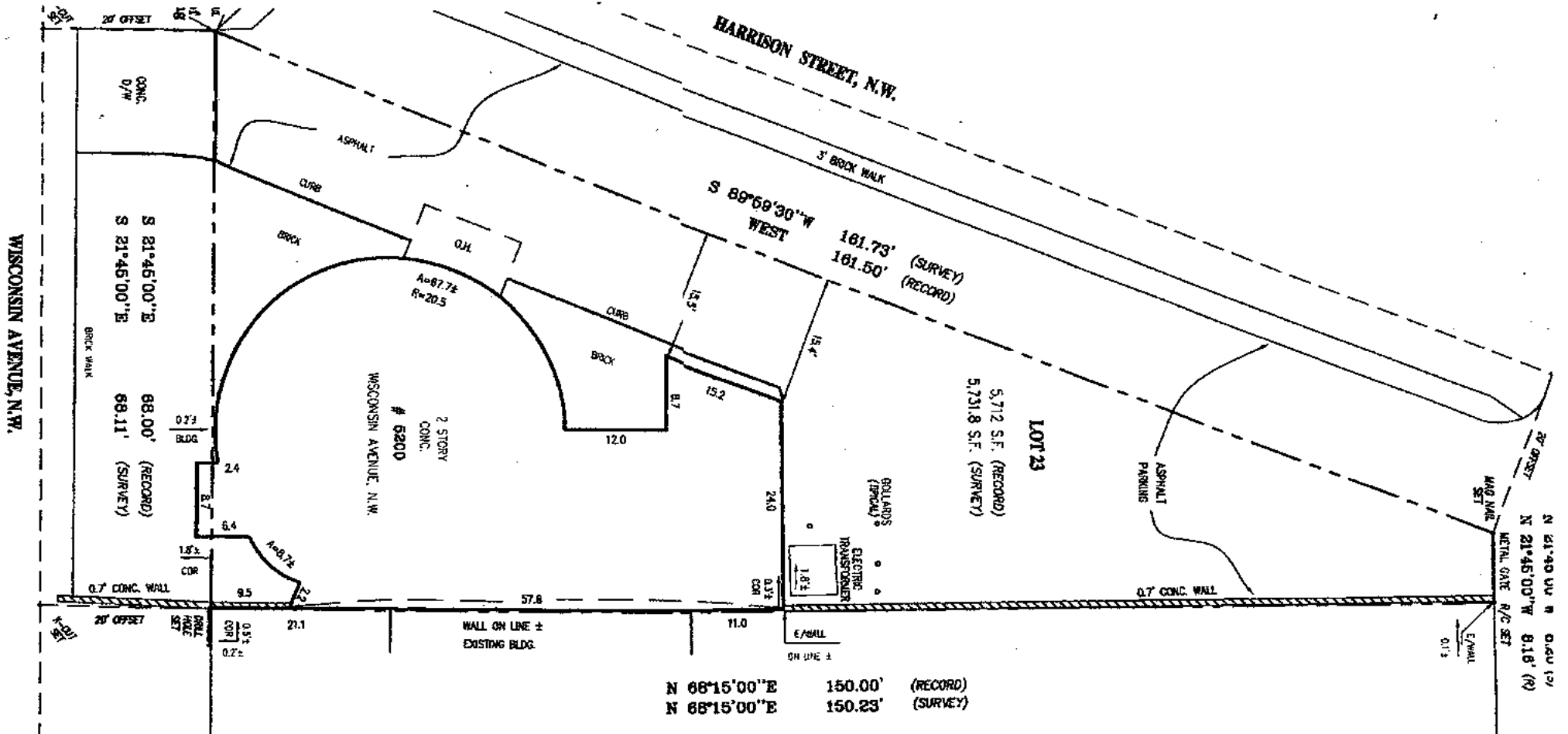
MATT SKALET

mkalet@klnb.com | 202-420-7775

KELLY ATKINSON

katkinson@klnb.com | 202-420-7762







5200 WISCONSIN AVE NW

WASHINGTON, DC 20015

FOR MORE INFORMATION, PLEASE CONTACT:

MATT SKALET

[mskalet@klnb.com](mailto:maskalet@klnb.com)
202-420-7775

KELLY ATKINSON

katkinson@klnb.com
202-420-7762

1130 Connecticut Ave, NW, Suite 600, Washington, DC 20036

.....

klnb.com



[instagram.com/klnbcre](https://www.instagram.com/klnbcre)



[linkedin.com/company/klnb](https://www.linkedin.com/company/klnb)



[facebook.com/KLNBCRE](https://www.facebook.com/KLNBCRE)

[CLICK TO VIEW PROPERTY WEBSITE](#)

While we have no reason to doubt the accuracy of any of the information supplied, we cannot, and do not, guarantee its accuracy. All information should be independently verified prior to a purchase or lease of the property. We are not responsible for errors, omissions, misuse, or misinterpretation of information contained herein and make no warranty of any kind, express or implied, with respect to the property or any other matters.