



SUBLEASE

AVAILABILITY

- Prime Medical Office Sublease
- Suite 350 - 6,074 SF
- Rate: \$25 FS

HIGHLIGHTS

- Rare medical office sublease - immediate occupancy
- Term through November 27' (Term extension possible)
- Conveniently located just off intersection of Rt. 28 & Rt. 50
- On-site property management
- Ample Parking at 3.6/1,000 SF
- Surrounded by Amenities

DEMOGRAPHICS | 2024

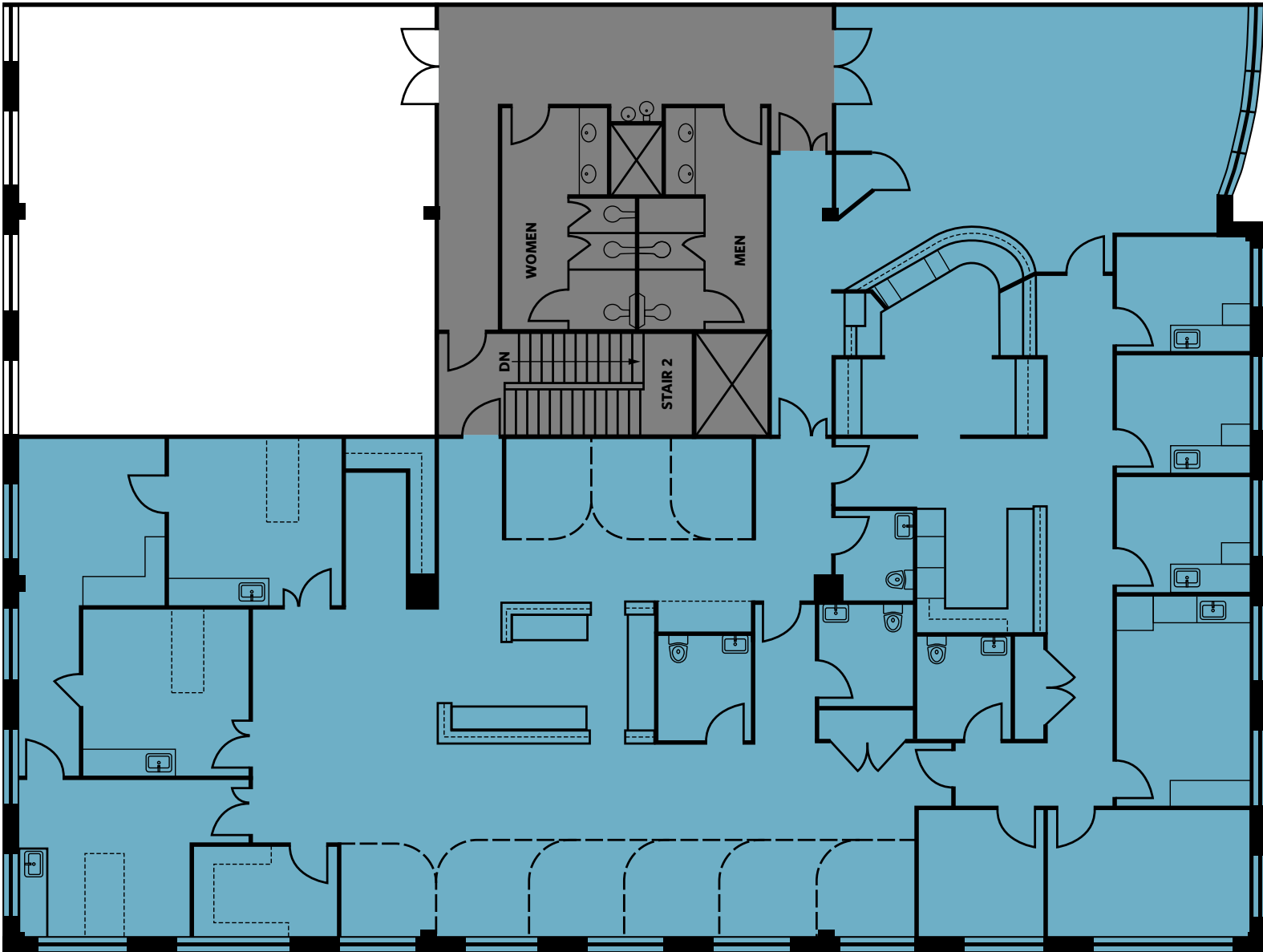
	1-MILE	3-MILE	5-MILE
Population	9,525	72,025	248,302
Daytime Population	16,001	69,483	168,617
Households	3,091	23,515	87,377
Average HH Income	\$180,604	\$235,238	\$201,170

[CLICK TO DOWNLOAD DEMOGRAPHIC REPORT](#)

FLOOR PLAN

CHANTILLY PROFESSIONAL BUILDING

3914 CENTREVILLE ROAD, CHANTILLY, VA 20121, FAIRFAX COUNTY



MARC TASKER, CCIM, SIOR

mtasker@klnb.com | 703-932-2735

JACK REGLER

jregler@klnb.com | 703-268-2740



PHOTOS

CHANTILLY PROFESSIONAL BUILDING

3914 CENTREVILLE ROAD, CHANTILLY, VA 20121, FAIRFAX COUNTY



MARC TASKER, CCIM, SIOR
mtasker@klnb.com | 703-932-2735

JACK REGLER
jregler@klnb.com | 703-268-2740



AERIAL

CHANTILLY PROFESSIONAL BUILDING

3914 CENTREVILLE ROAD, CHANTILLY, VA 20121, FAIRFAX COUNTY



MARC TASKER, CCIM, SIOR
mtasker@klnb.com | 703-932-2735

JACK REGLER
jregler@klnb.com | 703-268-2740



FOR MORE INFORMATION, PLEASE CONTACT:

MARC TASKER, CCIM, SIOR

mtasker@klnb.com

703-268-2735

JACK REGLER

jregler@klnb.com

703-268-2740

8065 Leesburg Pike, Suite 700, Tysons, VA 22182

.....
klnb.com



[instagram.com/klnbcre](https://www.instagram.com/klnbcre)



[linkedin.com/company/klnb](https://www.linkedin.com/company/klnb)



[facebook.com/KLNBCRE](https://www.facebook.com/KLNBCRE)

CLICK TO VIEW PROPERTY WEBSITE