

CALVERTON SHOPPING CENTER

11601-11735 Beltsville Drive, Beltsville, MD 20705
Prince George's County



Grocery Outlet has more than **500 stores nationwide**, including **10 stores and counting** in our market!

PAD & INLINE OPPORTUNITIES FOR LEASE

JOIN: **GROCERY OUTLET**
bargain market™

CVS pharmacy



PROPERTY HIGHLIGHTS:

- Newly renovated shopping center!
- Located immediately southwest of the I-95/Powder Mill Road interchange.
- Traffic Counts (2023):
23,515 ADT on Powder Mill Road
22,445 ADT on Beltsville Drive
187,530 ADT on I-95

OWNED BY:



SPACE	SIZE	RATE	CONDITION	DELIVERY
VARIOUS		"MARKET"	AS-IS	IMMEDIATELY
*Est. NNN: \$7.36 PSF				



CLICK HERE TO WATCH VIDEO OF PROPERTY

Mai Vo
mvo@klnb.com
703-268-2722

Craig Cheney
ccheney@klnb.com
703-268-2705

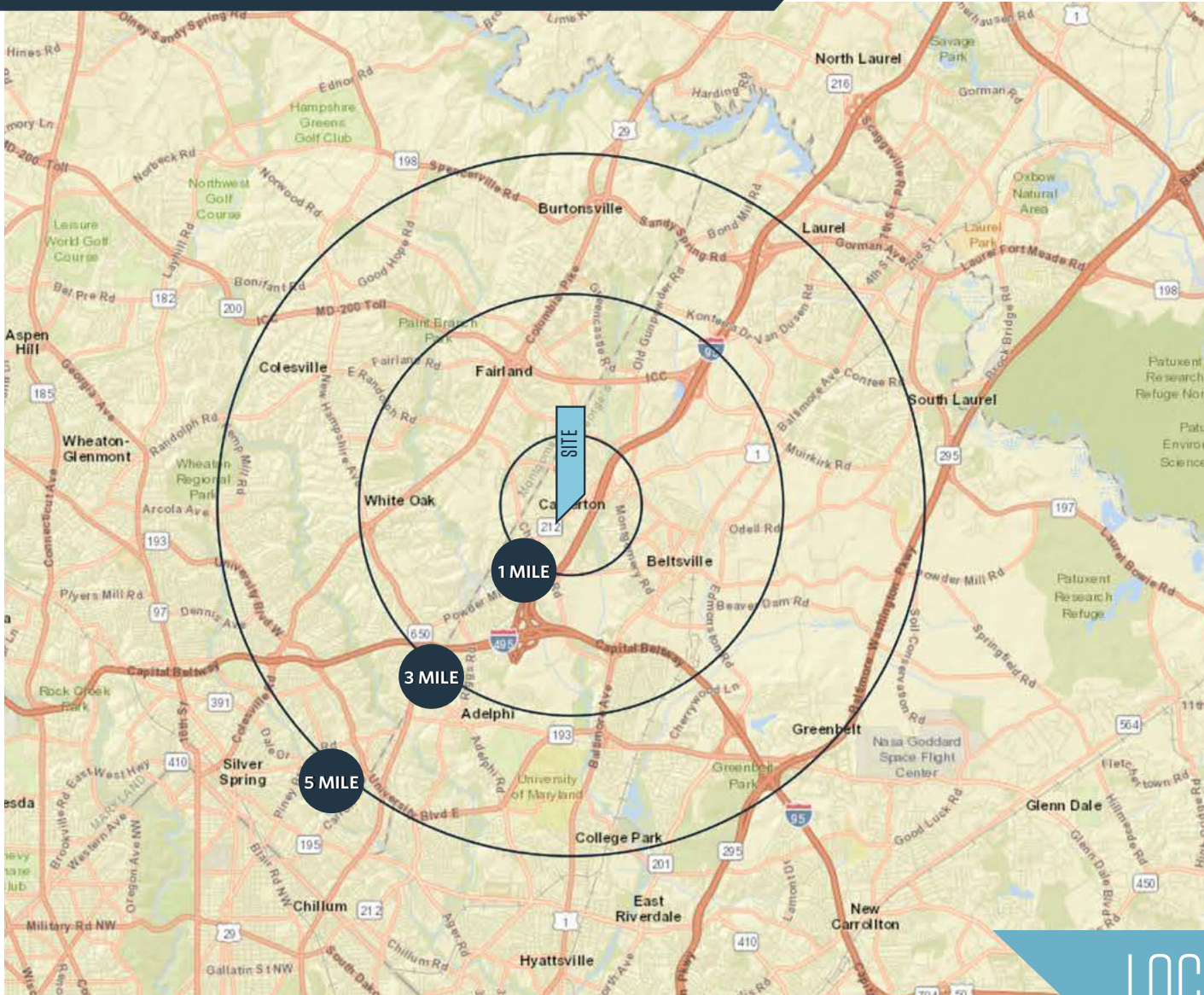
Dallon L. Cheney
dcheney@klnb.com
703-268-2703

8065 Leesburg Pike, Suite 700
Tysons, VA 22182
klnb.com



CALVERTON SHOPPING CENTER

11601-11735 Beltsville Drive, Beltsville, MD 20705
Prince George's County



DEMOGRAPHICS | 2024:

	1-MILE	3-MILE	5-MILE
Population	19,834	94,161	304,489
Daytime Population	5,347	51,211	140,687
Households	7,591	32,788	101,154
Average HH Income	\$114,998	\$124,113	\$134,475

[CLICK TO DOWNLOAD DEMOGRAPHIC REPORT](#)

TRAFFIC COUNTS | 2023:

Beltsville Drive	22,445 ADT
Powder Mill Rd (Rt. 212)	23,515 ADT
I-95	187,530 ADT

LOCATION & DEMOGRAPHICS

Mai Vo
mvo@klnb.com
703-268-2722

Craig Cheney
ccheney@klnb.com
703-268-2705

Dallon L. Cheney
dcheney@klnb.com
703-268-2703

8065 Leesburg Pike, Suite 700
Tysons, VA 22182
klnb.com



CALVERTON SHOPPING CENTER

11601-11735 Beltsville Drive, Beltsville, MD 20705
Prince George's County



CLOSE-UP AERIAL

Mai Vo
mvo@klnb.com
703-268-2722

Craig Cheney
ccheney@klnb.com
703-268-2705

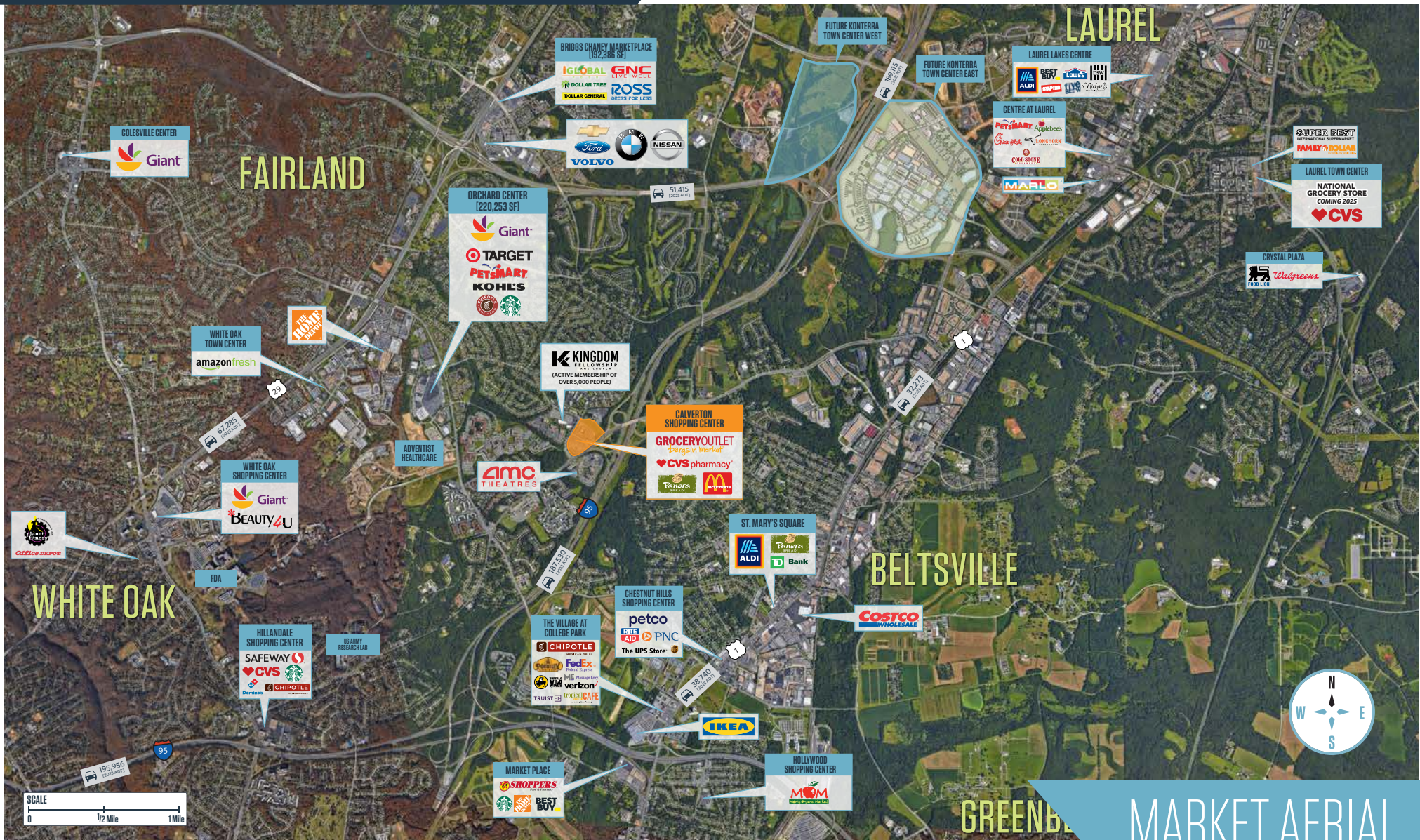
Dallon L. Cheney
dcheney@klnb.com
703-268-2703

8065 Leesburg Pike, Suite 700
Tysons, VA 22182
klnb.com

klnb

CALVERTON SHOPPING CENTER

11601-11735 Beltsville Drive, Beltsville, MD 20705
Prince George's County



MARKET AERIAL

Mai Vo
mvo@klnb.com
703-268-2722

Craig Cheney
ccheney@klnb.com
703-268-2705

Dallon L. Cheney
dcheney@klnb.com
703-268-2703

8065 Leesburg Pike, Suite 700
Tysons, VA 22182
klnb.com



CALVERTON SHOPPING CENTER

11601-11735 Beltsville Drive, Beltsville, MD 20705
Prince George's County

KINGDOM
FELLOWSHIP
(ACTIVE MEMBERSHIP OF
OVER 5,000 PEOPLE)

**NEW FAÇADE RENOVATIONS
COMPLETED JULY 2024!**



AVAILABLE



CLOSE-UP AERIAL

Mai Vo
mvo@klnb.com
703-268-2722

Craig Cheney
ccheney@klnb.com
703-268-2705

Dallon L. Cheney
dcheney@klnb.com
703-268-2703

8065 Leesburg Pike, Suite 700
Tysons, VA 22182
klnb.com

klnb

CALVERTON SHOPPING CENTER

11601-11735 Beltsville Drive, Beltsville, MD 20705
Prince George's County

GROCERYOUTLET bargain market

- Has more than 500 stores nationwide
- Including 10 stores and counting in our market
- Is publicly traded on the Nasdaq
- Carries brand names & farm fresh organic produce
- Costs 40%-70% less than conventional grocery stores



CALVERTON SHOPPING CENTER

#	TENANT	SQ. FT.
11735	AVAILABLE	2,400
11729	CVS/pharmacy	17,500
11725	DRY CLEANER	2,750
11721	CALVERTON BARBER	1,250
11719	AVAILABLE	1,216
11717	AVAILABLE	1,775
11705	GROCERYOUTLET bargain market	18,080
11703	CALVERTON LIQUORS	6,420
11607	CALVERTON LAUNDROMAT	3,800
11605	NAIL SALON	2,500
11601	baskin BR obbins	700
11603	CALVERTON TAILORS	400
11609	AVAILABLE	1,080
11611	MAGIC HAIR BRAIDING	1,080
11613	AVAILABLE	1,400
11615	DANNY'S	1,400
11619	AVAILABLE	2,860
11623	TACOS A LA MADRE	3,000
4000	McDonald's	3,862
PAD 1	AVAILABLE	950
PAD 2	Panera BREAD OPENING 2 ND QUARTER 2025	4,271

SITE PLAN

Mai Vo
mvo@klnb.com
703-268-2722

Craig Cheney
ccheney@klnb.com
703-268-2705

Dallon L. Cheney
dcheney@klnb.com
703-268-2703

8065 Leesburg Pike, Suite 700
Tysons, VA 22182
klnb.com

klnb

CALVERTON SHOPPING CENTER

11601-11735 Beltsville Drive, Beltsville, MD 20705
Prince George's County



PHOTOS

Mai Vo
mvo@klnb.com
703-268-2722

Craig Cheney
ccheney@klnb.com
703-268-2705

Dallon L. Cheney
dcheney@klnb.com
703-268-2703

8065 Leesburg Pike, Suite 700
Tysons, VA 22182
klnb.com

klnb

CALVERTON SHOPPING CENTER

11601-11735 Beltsville Drive, Beltsville, MD 20705
Prince George's County



PHOTOS

Mai Vo
mvo@klnb.com
703-268-2722

Craig Cheney
ccheney@klnb.com
703-268-2705

Dallon L. Cheney
dcheney@klnb.com
703-268-2703

8065 Leesburg Pike, Suite 700
Tysons, VA 22182
klnb.com

klnb

CALVERTON SHOPPING CENTER

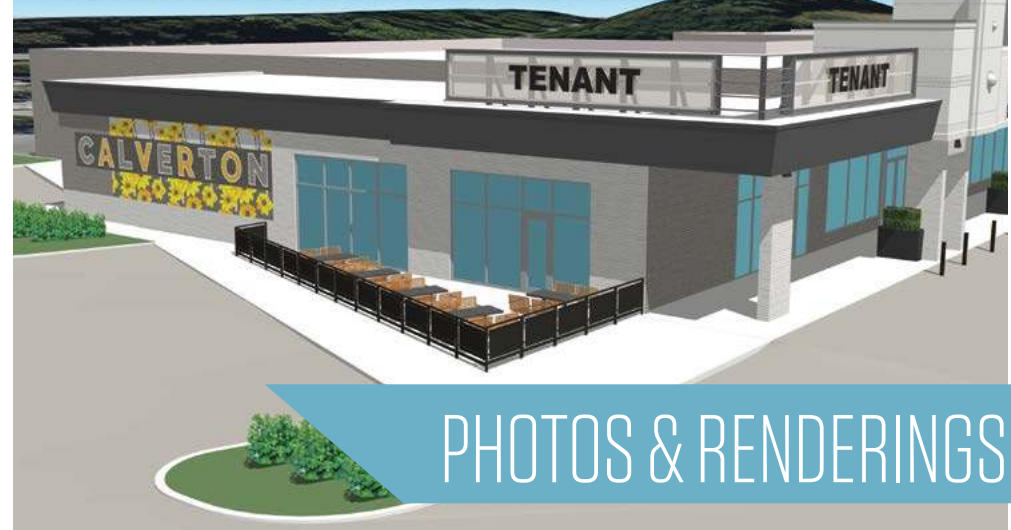
11601-11735 Beltsville Drive, Beltsville, MD 20705
Prince George's County



*RENDERING OF FUTURE PANERA BREAD PAD



*POTENTIAL OUTDOOR SEATING FOR 2,400 SF END-CAP



PHOTOS & RENDERINGS

Mai Vo
mvo@klnb.com
703-268-2722

Craig Cheney
ccheney@klnb.com
703-268-2705

Dallon L. Cheney
dcheney@klnb.com
703-268-2703

8065 Leesburg Pike, Suite 700
Tysons, VA 22182
klnb.com

klnb

CALVERTON SHOPPING CENTER

11601-11735 Beltsville Drive, Beltsville, MD 20705
Prince George's County



EXIT 29 B
(NORTHBOUND 95)



EXIT 29 A
(NORTHBOUND 95)



EXIT 29 B
(SOUTHBOUND 95)

HIGHWAY SIGNS

Mai Vo
mvo@klnb.com
703-268-2722

Craig Cheney
ccheney@klnb.com
703-268-2705

Dallon L. Cheney
dcheney@klnb.com
703-268-2703

8065 Leesburg Pike, Suite 700
Tysons, VA 22182
klnb.com

klnb

CALVERTON SHOPPING CENTER

11601-11735 Beltsville Drive, Beltsville, MD 20705
Prince George's County

***RENDERING OF PROPOSED BUILDING**



***RENDERING OF PROPOSED BUILDING**



Mai Vo
mvo@klnb.com
703-268-2722

Craig Cheney
ccheney@klnb.com
703-268-2705

Dallon L. Cheney
dcheney@klnb.com
703-268-2703

8065 Leesburg Pike, Suite 700
Tysons, VA 22182
klnb.com

klnb

CALVERTON SHOPPING CENTER

11601-11735 Beltsville Drive, Beltsville, MD 20705
Prince George's County

[CLICK TO VIEW PROPERTY WEBSITE](#)

For More Information, Please Contact:

Mai Vo

mvo@klnb.com
703-268-2722

Craig Cheney

ccheney@klnb.com
703-268-2705

Dallon L. Cheney

dcheney@klnb.com
703-268-2703

8065 Leesburg Pike, Suite 700
Tysons, VA 22182

klnb.com



[instagram.com/klnbcre](https://www.instagram.com/klnbcre)



[linkedin.com/company/klnb](https://www.linkedin.com/company/klnb)



[facebook.com/KLNBCRE](https://www.facebook.com/KLNBCRE)

While we have no reason to doubt the accuracy of any of the information supplied, we cannot, and do not, guarantee its accuracy. All information should be independently verified prior to a purchase or lease of the property. We are not responsible for errors, omissions, misuse, or misinterpretation of information contained herein and make no warranty of any kind, express or implied, with respect to the property or any other matters.

klnb