

HOLLYWOOD SHOPPING CENTER

9805 Rhode Island Avenue, College Park, MD 20740
Prince George's County



RETAIL FOR LEASE

JOIN THESE RETAILERS:



- 49,193 SF shopping center well located on the heavily trafficked Rhode Island Avenue in College Park, MD.
- Available Space: 1,000 SF, 1,750, 1,200 SF, and up to 8,000 SF.
- Excellent visibility and abundant parking.
- Located within 2 miles of the University of Maryland, College Park (40,800+ students).

SIZE	CONDITION	TIMING
1,000 SF	"AS-IS" (FORMER HOLLYWOOD NUTRITION)	IMMEDIATE
1,000 SF	"AS-IS" (FORMER DRY CLEANERS)	IMMEDIATE
1,200 SF	"AS-IS" (FORMER MARTIAL ARTS STUDIO)	IMMEDIATE

*Est. NNN: \$7.65 PSF

OWNED BY:  CARROLLTON ENTERPRISES

Mai Vo
mvo@klnb.com
703-268-2722

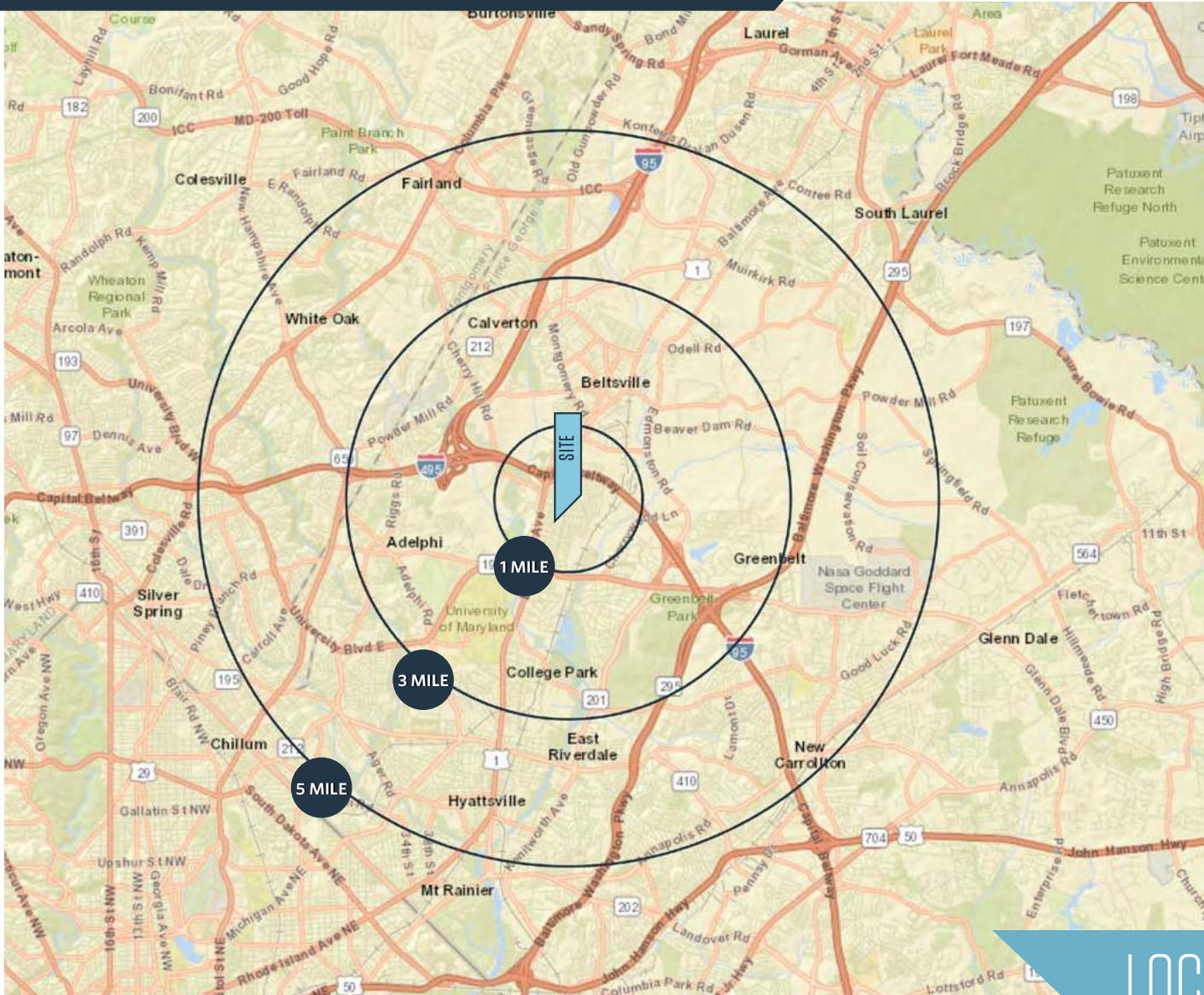
Dallon L. Cheney
dcheney@klnb.com
703-268-2703

8065 Leesburg Pike
Tysons, VA 22182
klnb.com



HOLLYWOOD SHOPPING CENTER

9805 Rhode Island Avenue, College Park, MD 20740
Prince George's County



DEMOGRAPHICS | 2024:

	1-MILE	3-MILE	5-MILE
Population	12,075	99,994	374,175
Daytime Population	13,799	125,882	354,431
Households	4,621	34,242	123,080
Average HH Income	\$127,201	\$111,956	\$117,742

[CLICK TO DOWNLOAD DEMOGRAPHIC REPORT](#)

TRAFFIC COUNTS | 2023:

Rhode Island Avenue	14,851 ADT
Capital Beltway	226,585 ADT

LOCATION & DEMOGRAPHICS

Mai Vo
mvo@klnb.com
703-268-2722

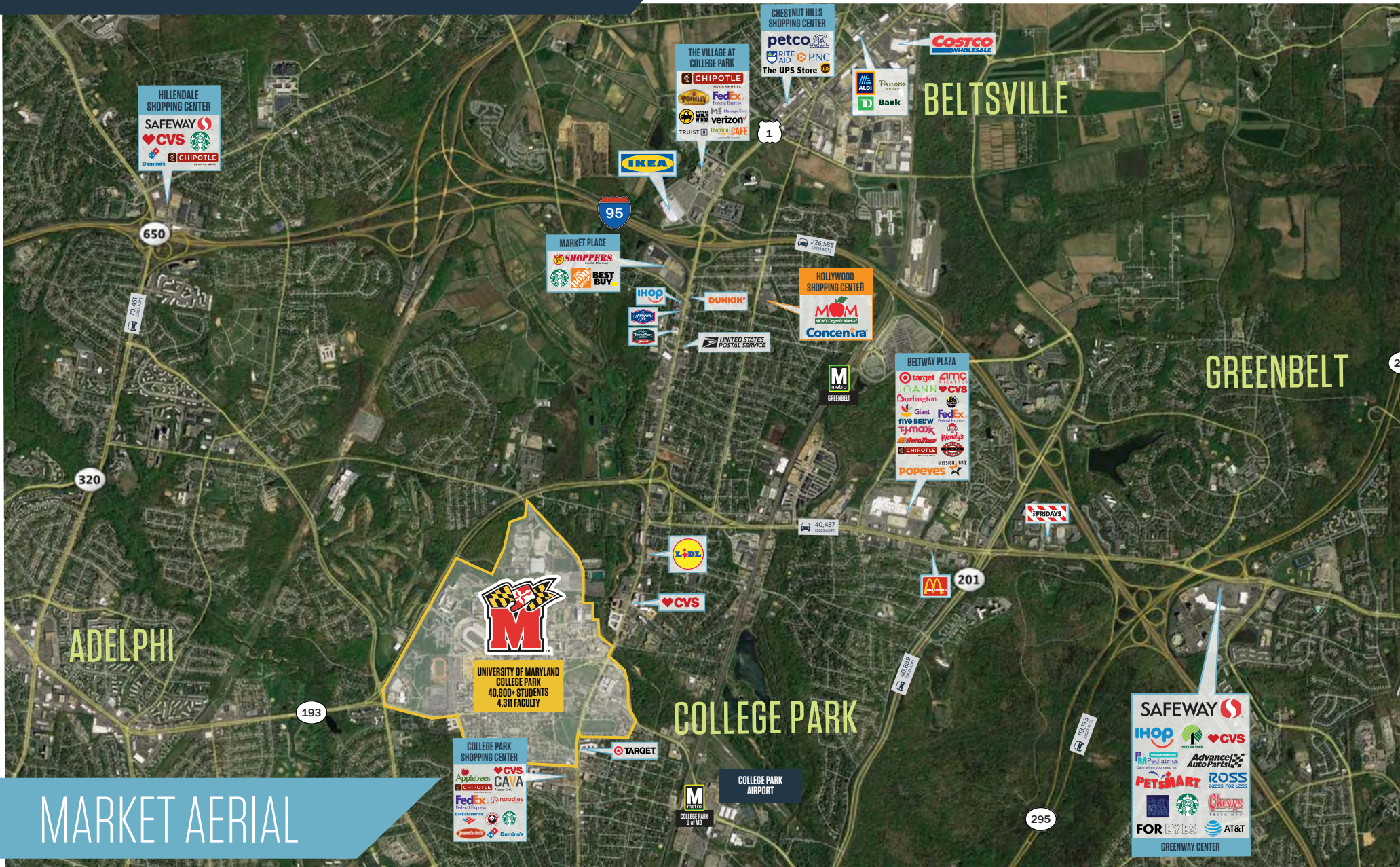
Dallon L. Cheney
dcheney@klnb.com
703-268-2703

8065 Leesburg Pike
Tysons, VA 22182
klnb.com



HOLLYWOOD SHOPPING CENTER

9805 Rhode Island Avenue, College Park, MD 20740
Prince George's County



MARKET AERIAL

Mai Vo
mvo@klnb.com
703-268-2722

Dallon L. Cheney
dcheney@klnb.com
703-268-2703

8065 Leesburg Pike
Tysons, VA 22182
klnb.com

klnb

HOLLYWOOD SHOPPING CENTER

9805 Rhode Island Avenue, College Park, MD 20740
Prince George's County

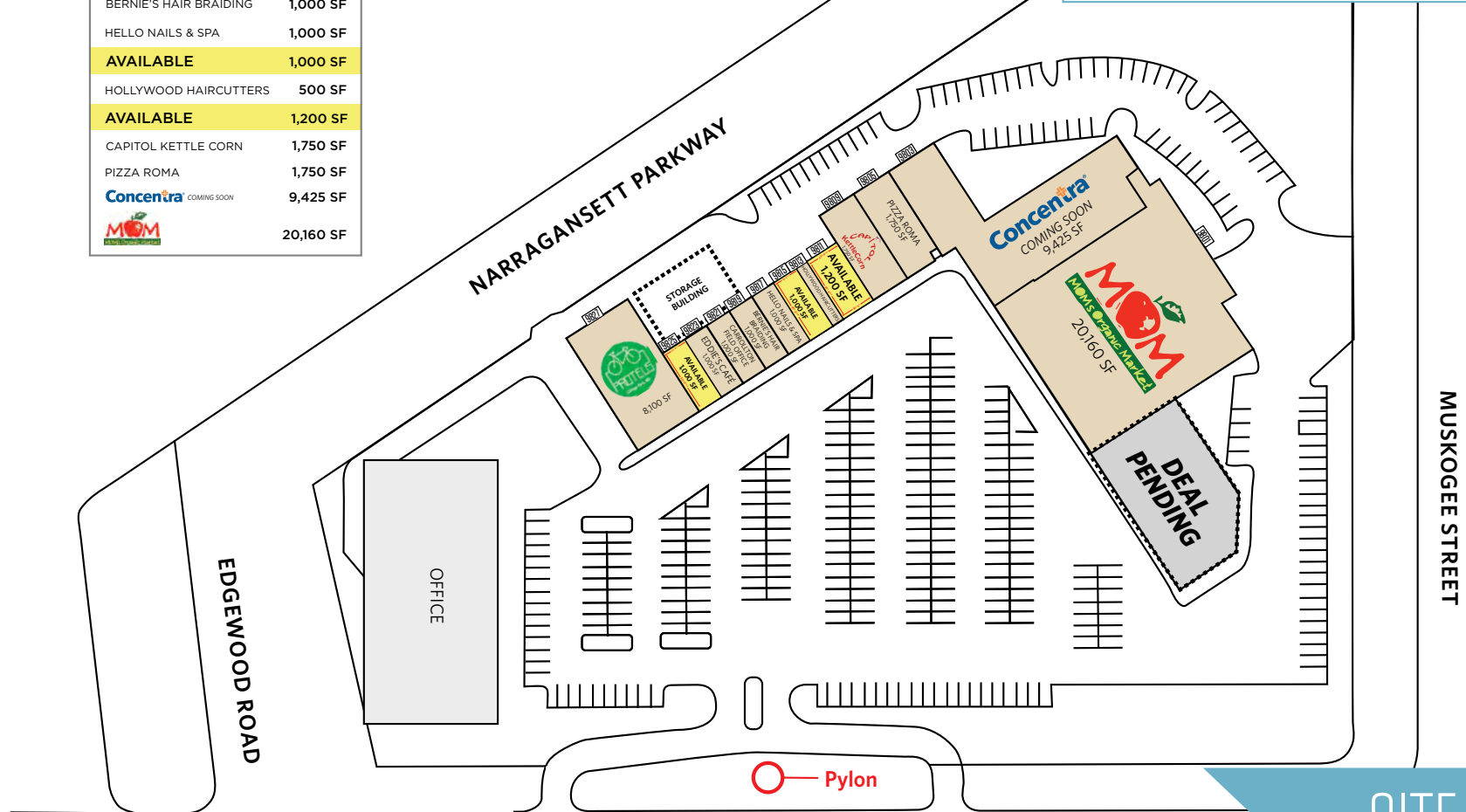
 [CLICK HERE TO WATCH A VIRTUAL TOUR](#)

TENANT	SQ. FT.
PROTEUS	8,100 SF
AVAILABLE	1,000 SF
EDDIE'S CAFE	1,000 SF
CARROLLTON FIELD OFFICE	1,000 SF
BERNIE'S HAIR BRAIDING	1,000 SF
HELLO NAILS & SPA	1,000 SF
AVAILABLE	1,000 SF
HOLLYWOOD HAIRCUTTERS	500 SF
AVAILABLE	1,200 SF
CAPITOL KETTLE CORN	1,750 SF
PIZZA ROMA	1,750 SF
Concentra <small>COMING SOON</small>	9,425 SF
MOM <small>MOM'S ORGANIC MARKET</small>	20,160 SF

LEASED
 AVAILABLE

SIZE	CONDITION	TIMING
1,000 SF	"AS-IS" (FORMER HOLLYWOOD NUTRITION)	IMMEDIATE
1,000 SF	"AS-IS" (FORMER DRY CLEANERS)	IMMEDIATE
1,200 SF	"AS-IS" (FORMER MARTIAL ARTS STUDIO)	IMMEDIATE

*Est. NNN: \$7.65 PSF



SITE PLAN

 14,851
[2023 ADT]

RHODE ISLAND AVENUE

Mai Vo
mvo@klnb.com
703-268-2722

Dallon L. Cheney
dcheney@klnb.com
703-268-2703

8065 Leesburg Pike
Tysons, VA 22182
klnb.com



HOLLYWOOD SHOPPING CENTER

9805 Rhode Island Avenue, College Park, MD 20740
Prince George's County



Mai Vo
mvo@klnb.com
703-268-2722

Dallon L. Cheney
dcheney@klnb.com
703-268-2703

8065 Leesburg Pike
Tysons, VA 22182
klnb.com

klnb

HOLLYWOOD SHOPPING CENTER

9805 Rhode Island Avenue, College Park, MD 20740
Prince George's County

[CLICK TO VIEW PROPERTY WEBSITE](#)

For More Information, Please Contact:

Mai Vo
mvo@klnb.com
703-268-2722

Dallon L. Cheney
dcheney@klnb.com
703-268-2703

8065 Leesburg Pike, Suite 700
Tysons, VA 22182

klnb.com

 facebook.com/KLNBCRE

 linkedin.com/company/klnb

 instagram.com/klnbcre

While we have no reason to doubt the accuracy of any of the information supplied, we cannot, and do not, guarantee its accuracy. All information should be independently verified prior to a purchase or lease of the property. We are not responsible for errors, omissions, misuse, or misinterpretation of information contained herein and make no warranty of any kind, express or implied, with respect to the property or any other matters.

klnb