



## NEARBY ATTRACTIONS



JANNEY ELEMENTARY SCHOOL: 580 STUDENTS

JACKSON REED HIGH SCHOOL: 2,186 STUDENTS

ALICE DEAL MIDDLE SCHOOL: 1,015 STUDENTS

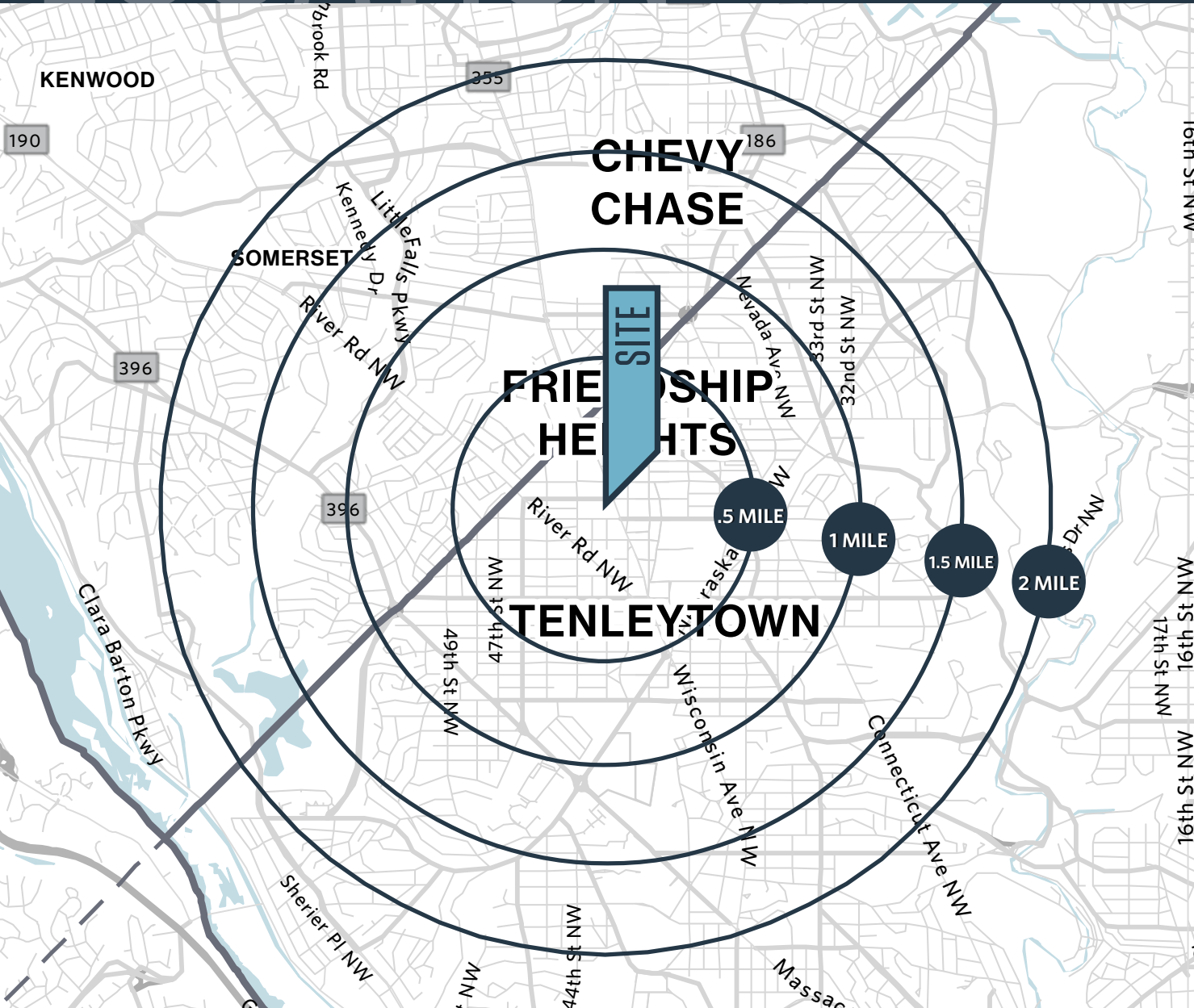
## 2ND FLOOR SPACE AVAILABLE: 986 SF

- Former Mia's Nails: 986 SF 2nd floor with street level access
- Prime retail space available in the dense and affluent Upper Northwest
- Restaurant coming soon at the street level
- Excellent visibility from Wisconsin Ave (23,340 ADT)
- Conveniently located 3 blocks to Friendship Heights Metro and 4 blocks to Tenleytown Metro
- Adjacent to neighborhood favorites Pete's Pizza, Matisse, and Coffee Nature

# LOCATION

# 4936 WISCONSIN AVE

WASHINGTON, DC 20016



## AVAILABLE SPACE

SIZE	RATE	CONDITION
986 SF	\$4,500/month Plus Utilities	2nd Generation Nail Salon

## DEMOGRAPHICS | 2023:

10 MIN DRIVE	.5 MILE	1 MILE	1.5 MILE	2 MILE
Population	5,754	33,253	63,504	95,915
Daytime Population	12,333	43,421	79,567	112,911
Households	2,325	15,703	28,064	43,680
Average HH Income	\$248,969	\$230,782	\$238,436	\$236,307

## TRAFFIC COUNTS | 2022:

Wisconsin Ave NW	23,340 ADT
Walk Score	92 Walker's Paradise
Friendship Heights Metro	7,900 RPD
Tenleytown Metro	5,785 RPD

**MATT SKALET**

mkalet@klnb.com | 202-420-7775

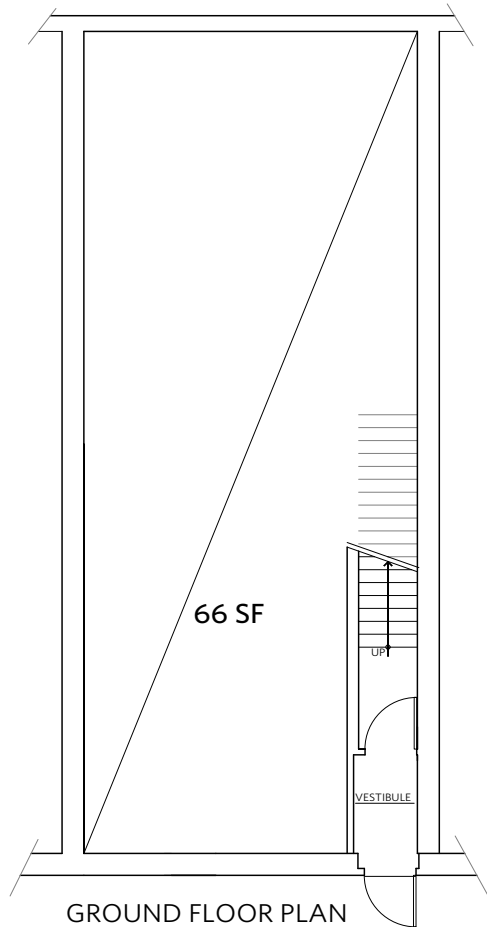


# SITE PLAN

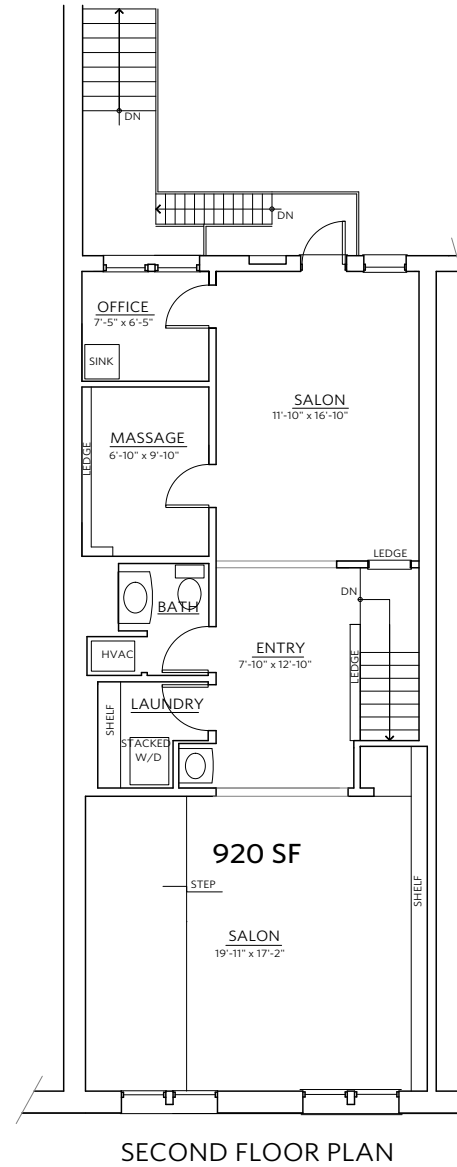
# 4936 WISCONSIN AVE

WASHINGTON, DC 20016

FORMER MIA'S NAILS  
STREET LEVEL + 2ND FLOOR



1/4" = 1'-0"



1/4" = 1'-0"

MATT SKALET

mkalet@klnb.com | 202-420-7775



Upper NW  
Washington | District of Columbia

## klnb

Google Earth Pro - 2019 Aerial Photograph  
While we have no reason to doubt the accuracy of any of the information supplied, we cannot, and do not, guarantee its accuracy.





# 4936 WISCONSIN AVE

WASHINGTON, DC 20016

## FOR MORE INFORMATION, PLEASE CONTACT:

**MATT SKALET**

[mkalet@klnb.com](mailto:mkalet@klnb.com)

202-420-7775

1130 Connecticut Avenue, Suite 600, Washington, DC 20036

.....

**klnb.com**



[instagram.com/klnbcre](https://www.instagram.com/klnbcre)



[linkedin.com/company/klnb](https://www.linkedin.com/company/klnb)



[facebook.com/KLNBCRE](https://www.facebook.com/KLNBCRE)

**CLICK TO VIEW PROPERTY WEBSITE**

While we have no reason to doubt the accuracy of any of the information supplied, we cannot, and do not, guarantee its accuracy. All information should be independently verified prior to a purchase or lease of the property. We are not responsible for errors, omissions, misuse, or misinterpretation of information contained herein and make no warranty of any kind, express or implied, with respect to the property or any other matters.