

MIDWAY INDUSTRIAL PARK

1710 Midway Road, Odenton, MD 21113
Anne Arundel County



2.15 Acres of W-2 Outside Storage

WAREHOUSE FOR LEASE

PROPERTY FEATURES

- **Available:**
 - 11,707 SF & 11,411 SF bays each with (1) drive-in loading door
 - 40,400 SF - 83,919 SF of warehouse with dock loading; Available 9/1/2024
- **Ceiling Height:** 16' - 24' clear
- **Column Spacing:** 33.33' x 50' in 16' area and 40' x 50' in 24' area
- **Heating:** Gas-fired
- **Storage Area:** 2.15 acres of fenced, outside storage; Can be leased with warehouse space or separate
- **Building Material:** Masonry and tilt-up
- **Sprinkler:** Wet system
- **Lighting:** LED
- **Electrical Service:** 3,200 amps, 277/480 v, 3 phase
- **Roof:** 50,000 SF of metal; remainder foam
- **Zoning:** W-2

Robert Smith
bsmith@klnb.com
O 443-574-1411 | C 443-540-4275

Michael Moran
mmoran@klnb.com
O 443-574-1402

9881 Broken Land Pkwy, Suite 300
Columbia, MD 21046
410-290-1110 klnb.com



MIDWAY INDUSTRIAL PARK

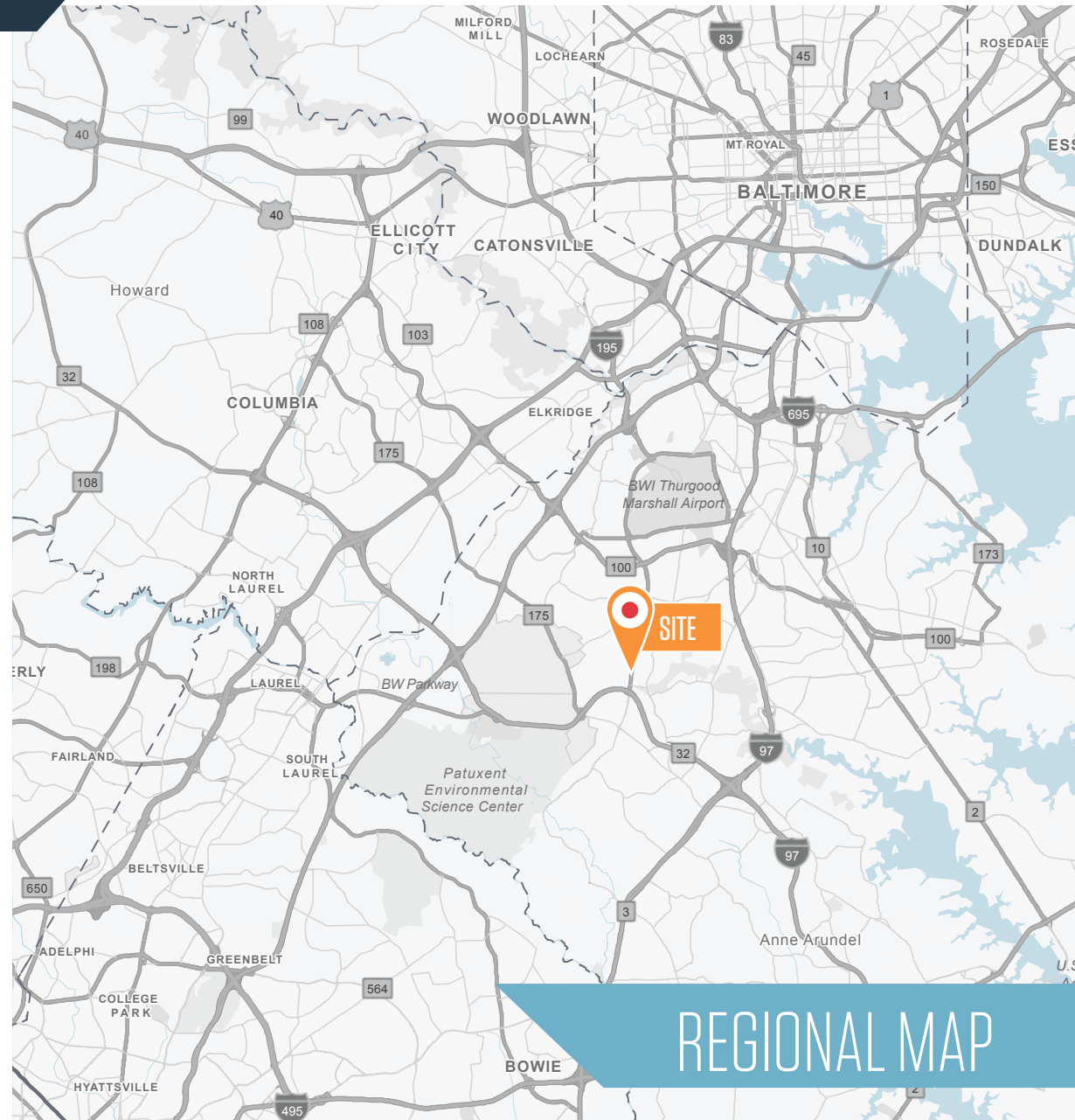
1710 Midway Road, Odenton, MD 21113
Anne Arundel County

ADDITIONAL FEATURES

- **Loading:** Additional dock doors & drive-ins can be added
- **Parking:** Free surface parking
- **Comments:** » 2.15 acres of fenced outside storage
» Heavy zoning allowed for outside storage

DISTANCES & DRIVE TIMES

Interstate 95:	8.7 miles / 12 minutes
Route 175 :	1.5 miles / 2 minutes
Route 32:	0.6 miles / 1 minutes
BWI Airport:	6.6 miles / 10 minutes
Baltimore Beltway (I-695):	9.2 miles / 14 minutes
Capital Beltway (I-495):	21.5 miles / 26 minutes
Baltimore City:	13 miles / 19 minutes
Port of Baltimore:	18 miles / 24 minutes



REGIONAL MAP

Robert Smith
bsmith@klnb.com
O 443-574-1411 | C 443-540-4275

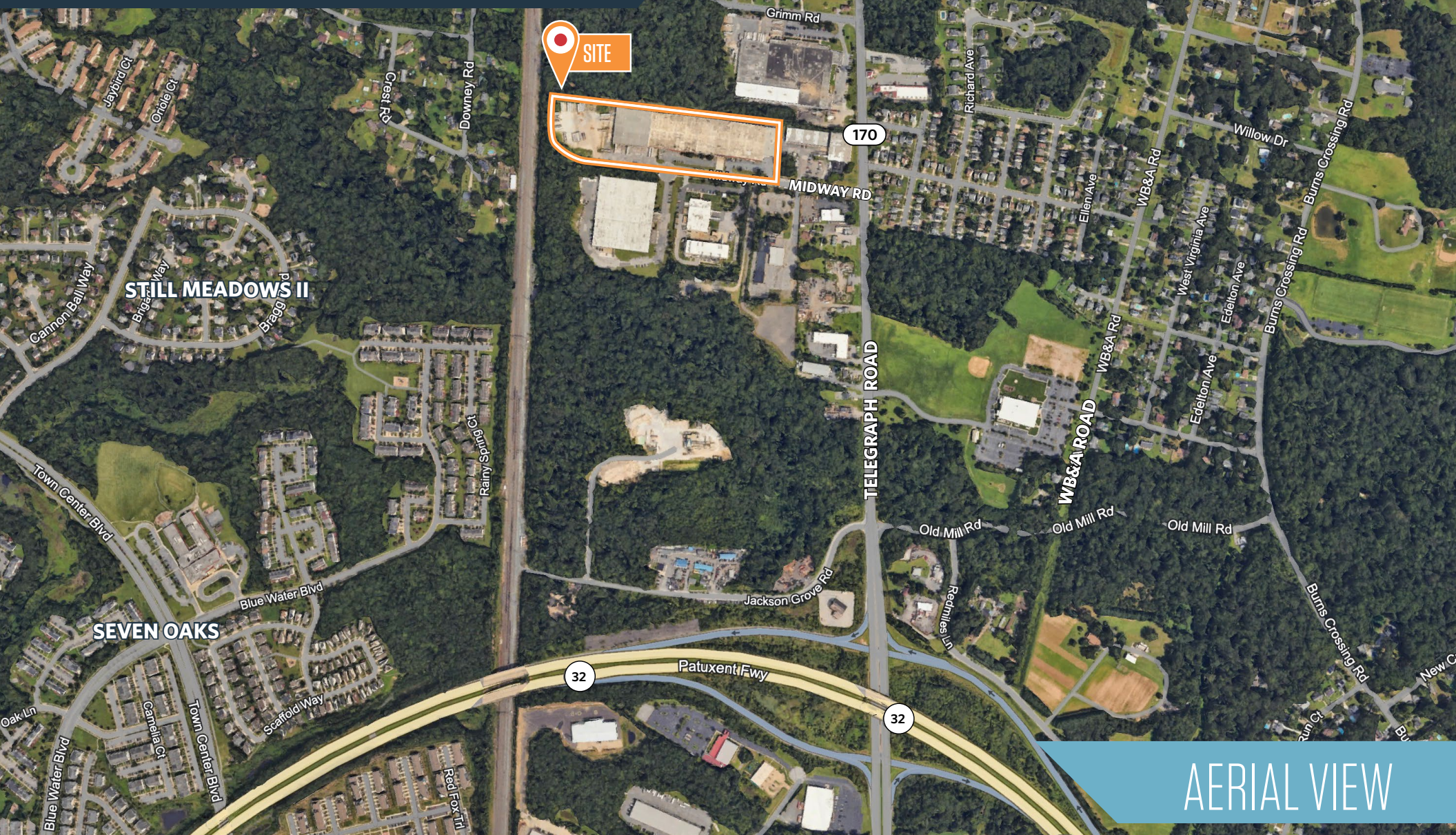
Michael Moran
mmoran@klnb.com
O 443-574-1402

9881 Broken Land Pkwy, Suite 300
Columbia, MD 21046
410-290-1110 klnb.com



MIDWAY INDUSTRIAL PARK

1710 Midway Road, Odenton, MD 21113
Anne Arundel County



AERIAL VIEW

Robert Smith
bsmith@klnb.com
O 443-574-1411 | C 443-540-4275

Michael Moran
mmoran@klnb.com
O 443-574-1402

9881 Broken Land Pkwy, Suite 300
Columbia, MD 21046
410-290-1110 klnb.com



MIDWAY INDUSTRIAL PARK

1710 Midway Road, Odenton, MD 21113
Anne Arundel County



AERIAL VIEW

Robert Smith
bsmith@klnb.com
O 443-574-1411 | C 443-540-4275

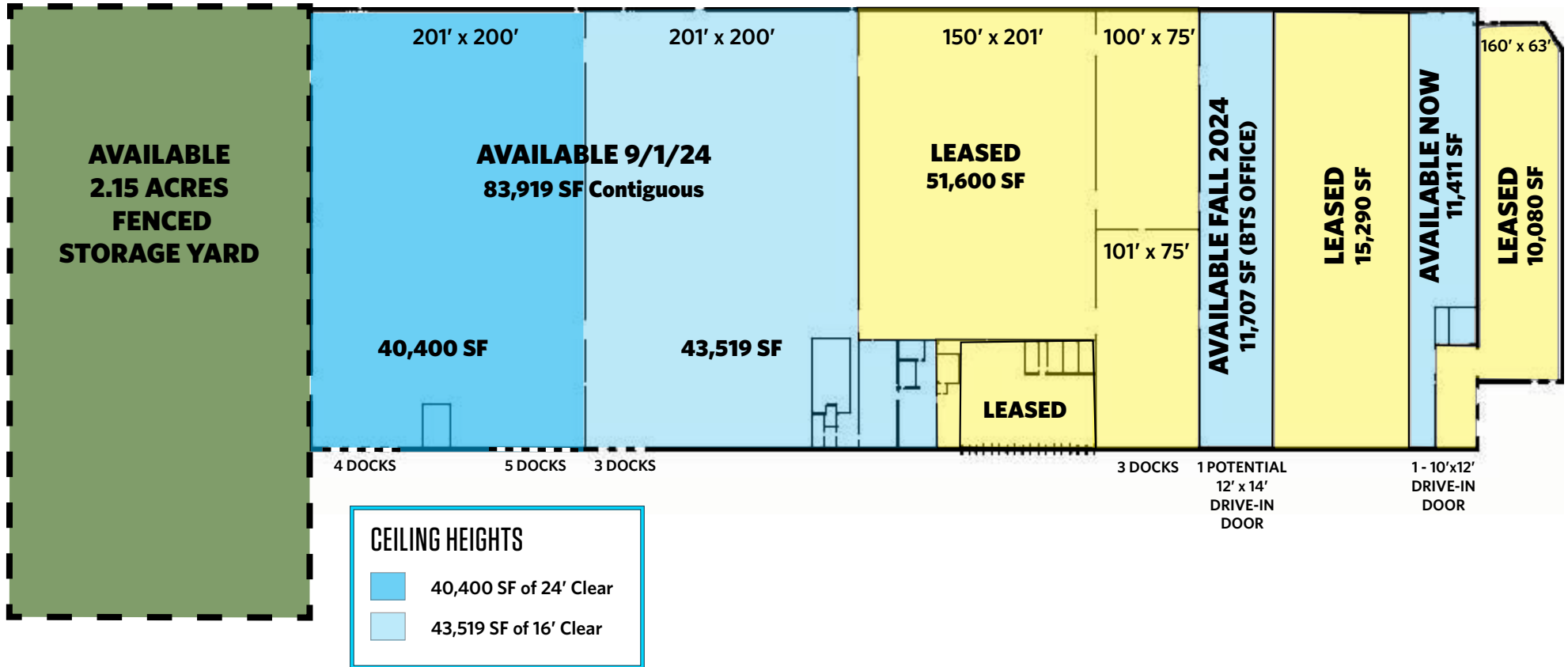
Michael Moran
mmoran@klnb.com
O 443-574-1402

9881 Broken Land Pkwy, Suite 300
Columbia, MD 21046
410-290-1110 klnb.com

NAklnb

MIDWAY INDUSTRIAL PARK

1710 Midway Road, Odenton, MD 21113
Anne Arundel County



BUILDING PLAN

Robert Smith
bsmith@klnb.com
O 443-574-1411 | C 443-540-4275

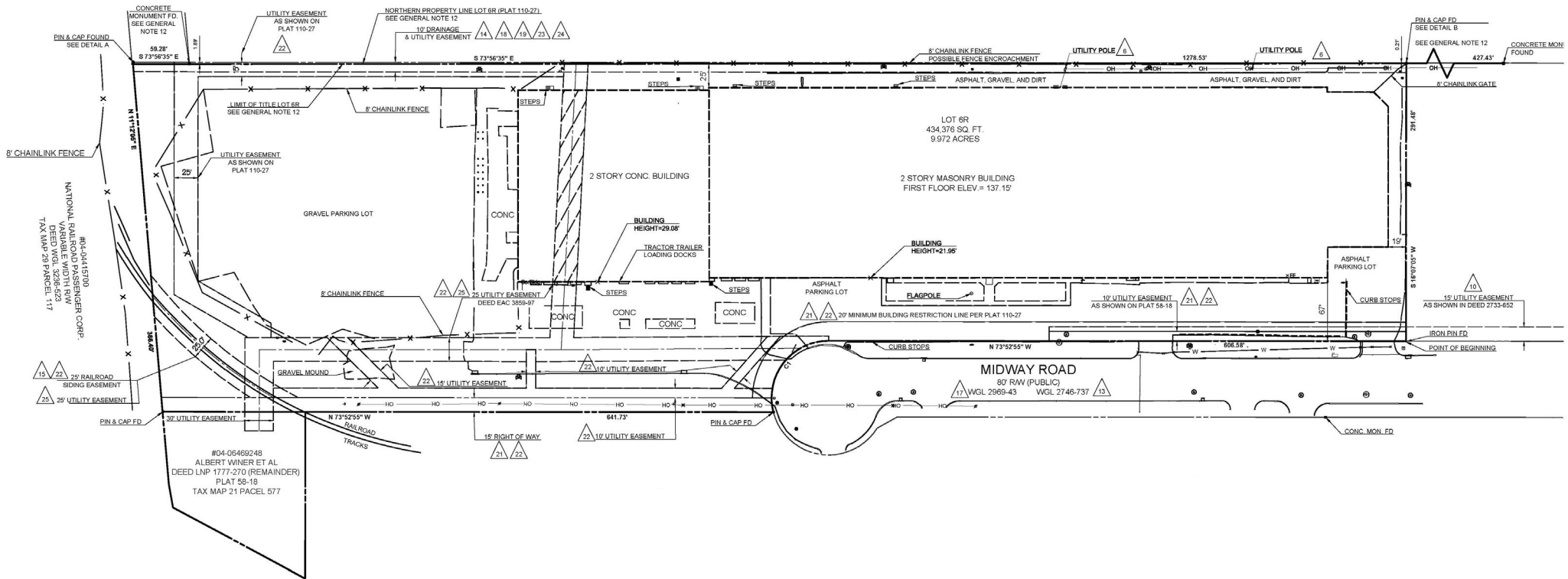
Michael Moran
mmoran@klnb.com
O 443-574-1402

9881 Broken Land Pkwy, Suite 300
Columbia, MD 21046
410-290-1110 klnb.com



MIDWAY INDUSTRIAL PARK

1710 Midway Road, Odenton, MD 21113
Anne Arundel County



SITE PLAN

Robert Smith
bsmith@klnb.com
O 443-574-1411 | C 443-540-4275

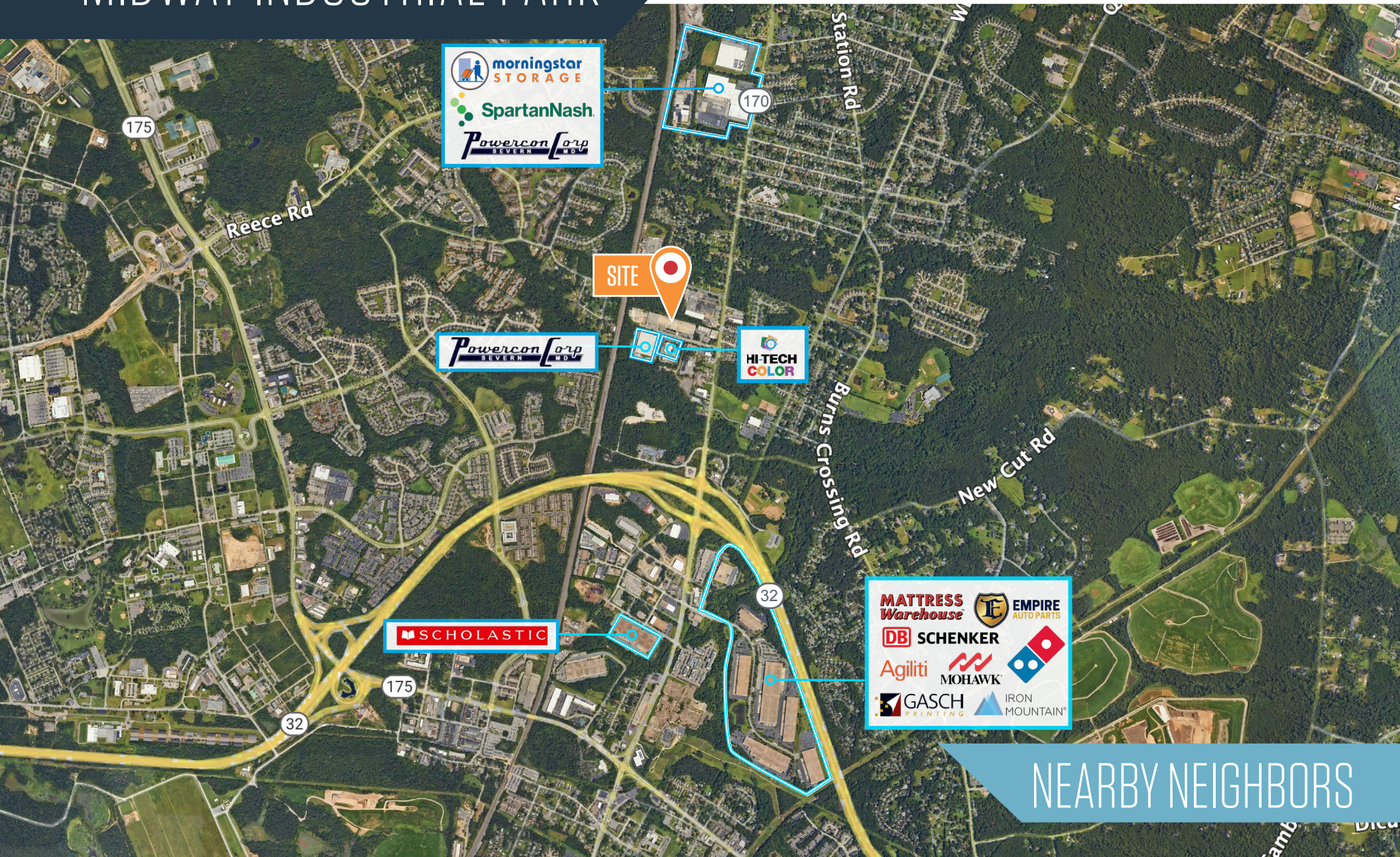
Michael Moran
mmoran@klnb.com
O 443-574-1402

9881 Broken Land Pkwy, Suite 300
Columbia, MD 21046
410-290-1110 klnb.com



MIDWAY INDUSTRIAL PARK

1710 Midway Road, Odenton, MD 21113
Anne Arundel County



NEARBY NEIGHBORS

Robert Smith
bsmith@klnb.com
O 443-574-1411 | C 443-540-4275

Michael Moran
mmoran@klnb.com
O 443-574-1402

9881 Broken Land Pkwy, Suite 300
Columbia, MD 21046
410-290-1110 klnb.com



MIDWAY INDUSTRIAL PARK

1710 Midway Road, Odenton, MD 21114
Anne Arundel County

[CLICK TO VIEW PROPERTY WEBSITE](#)

For More Information, Please Contact:

Robert Smith

bsmith@klnb.com

O 443-574-1411

C 443-540-4275

Michael Moran

mmoran@klnb.com

O 443-574-1402

9881 Broken Land Parkway, Suite 300
Columbia, MD 21046

klnb.com



[instagram.com/klnbcre](https://www.instagram.com/klnbcre)



[linkedin.com/company/klnb](https://www.linkedin.com/company/klnb)



[facebook.com/KLNBCRE](https://www.facebook.com/KLNBCRE)

While we have no reason to doubt the accuracy of any of the information supplied, we cannot, and do not, guarantee its accuracy. All information should be independently verified prior to a purchase or lease of the property. We are not responsible for errors, omissions, misuse, or misinterpretation of information contained herein and make no warranty of any kind, express or implied, with respect to the property or any other matters.

