

MIDWAY INDUSTRIAL PARK

1710 Midway Road, Odenton, MD 21113
Anne Arundel County

AVAILABLE
IMMEDIATELY!

11,411 SF

2.15 AC

11,411 SF With Office & Outside Storage

WAREHOUSE FOR LEASE

PROPERTY FEATURES

- **Available:** 11,411 square feet including \pm 1,000 square foot office
- **Loading:** One (1) drive-in door
- **Ceiling Height:** 16' clear
- **Column Spacing:** 33.33' x 50' in 16' area
- **Heating:** Gas-fired
- **Storage Area:** 2.15 acres of fenced, outside storage; Can be leased with warehouse space or separate

- **Building Material:** Masonry and tilt-up
- **Sprinkler:** Wet system
- **Lighting:** LED
- **Electrical Service:** 1,600 amps, 277/480 v, 3 phase
- **Roof:** 50,000 SF of metal; remainder foam
- **Zoning:** W-2

Robert Smith
bsmith@klnb.com
O 443-574-1411 | C 443-540-4275

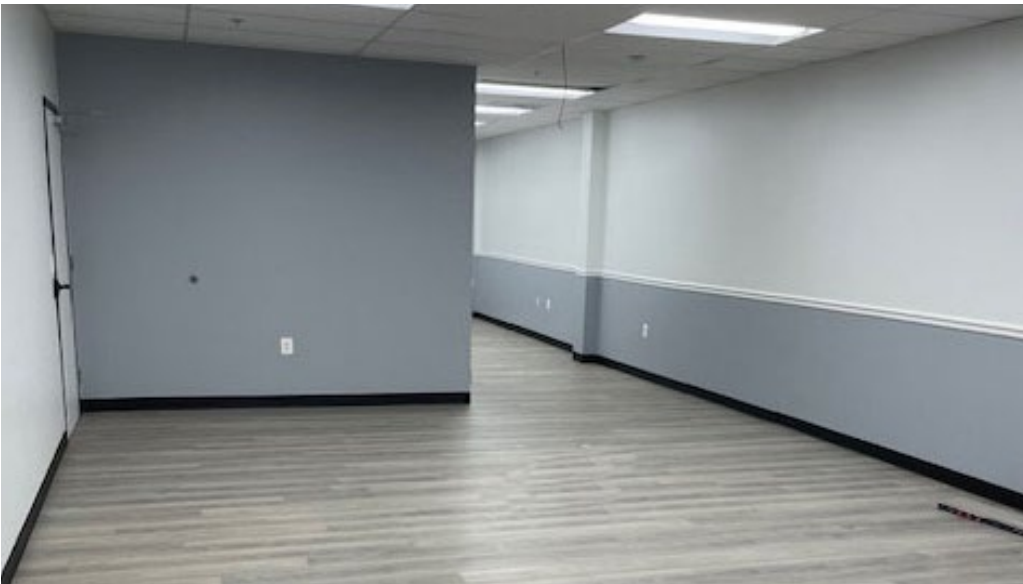
Michael Moran
mmoran@klnb.com
O 443-574-1402

9881 Broken Land Pkwy, Suite 300
Columbia, MD 21046
410-290-1110 klnb.com

NAklnb

MIDWAY INDUSTRIAL PARK

1710 Midway Road, Odenton, MD 21113
Anne Arundel County



PHOTOS

Robert Smith
bsmith@klnb.com
O 443-574-1411 | C 443-540-4275

Michael Moran
mmoran@klnb.com
O 443-574-1402

9881 Broken Land Pkwy, Suite 300
Columbia, MD 21046
410-290-1110 klnb.com

NAklnb

MIDWAY INDUSTRIAL PARK

1710 Midway Road, Odenton, MD 21113
Anne Arundel County



Robert Smith
bsmith@klnb.com
O 443-574-1411 | C 443-540-4275

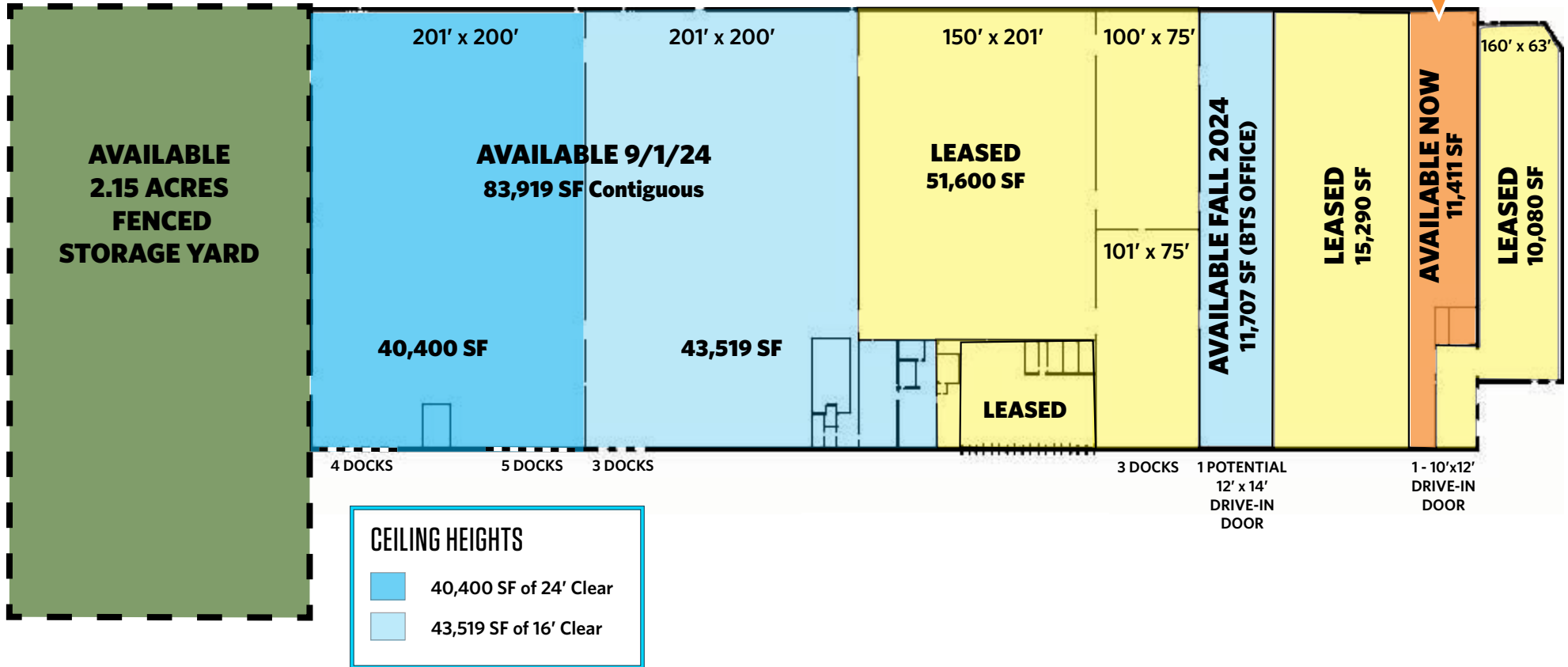
Michael Moran
mmoran@klnb.com
O 443-574-1402

9881 Broken Land Pkwy, Suite 300
Columbia, MD 21046
410-290-1110 klnb.com



MIDWAY INDUSTRIAL PARK

1710 Midway Road, Odenton, MD 21113
Anne Arundel County



BUILDING PLAN

Robert Smith
bsmith@klnb.com
O 443-574-1411 | C 443-540-4275

Michael Moran
mmoran@klnb.com
O 443-574-1402

9881 Broken Land Pkwy, Suite 300
Columbia, MD 21046
410-290-1110 klnb.com



MIDWAY INDUSTRIAL PARK

1710 Midway Road, Odenton, MD 21114
Anne Arundel County

[CLICK TO VIEW PROPERTY WEBSITE](#)

For More Information, Please Contact:

Robert Smith

bsmith@klnb.com

O 443-574-1411

C 443-540-4275

Michael Moran

mmoran@klnb.com

O 443-574-1402

9881 Broken Land Parkway, Suite 300
Columbia, MD 21046

klnb.com



[instagram.com/klnbcre](https://www.instagram.com/klnbcre)



[linkedin.com/company/klnb](https://www.linkedin.com/company/klnb)



[facebook.com/KLNBCRE](https://www.facebook.com/KLNBCRE)

While we have no reason to doubt the accuracy of any of the information supplied, we cannot, and do not, guarantee its accuracy. All information should be independently verified prior to a purchase or lease of the property. We are not responsible for errors, omissions, misuse, or misinterpretation of information contained herein and make no warranty of any kind, express or implied, with respect to the property or any other matters.

