

HOWARD CO. EXECUTIVE CENTER I

3300 North Ridge Road, Ellicott City, MD 21043
Howard County



FOR LEASE

Suite Highlights:

- **Suite 215:** 954 rentable square feet
- **Suite 290:** 3,425 rentable square feet
- **Suite 340:** 2,130 rentable square feet
- **Suite 360:** 979 rentable square feet
- **Rental Rate:** \$25.00 per square foot, Full Service annually, including base year building operating expenses, utilities and janitorial

Building Highlights

- Free and unreserved surface parking; 1 reserved space per 1,500 SF leased
- Deli on campus
- UPS/FedEx/Airborne overnight delivery boxes in building; FIOS Bandwidth
- Three story atrium entrance
- Strategically located at the intersection of Route 29 and Route 40 easily accessible to banking, shopping, restaurants and Columbia Town Center

Chuck Breitenother
cbreitenother@klnb.com
443-574-1422

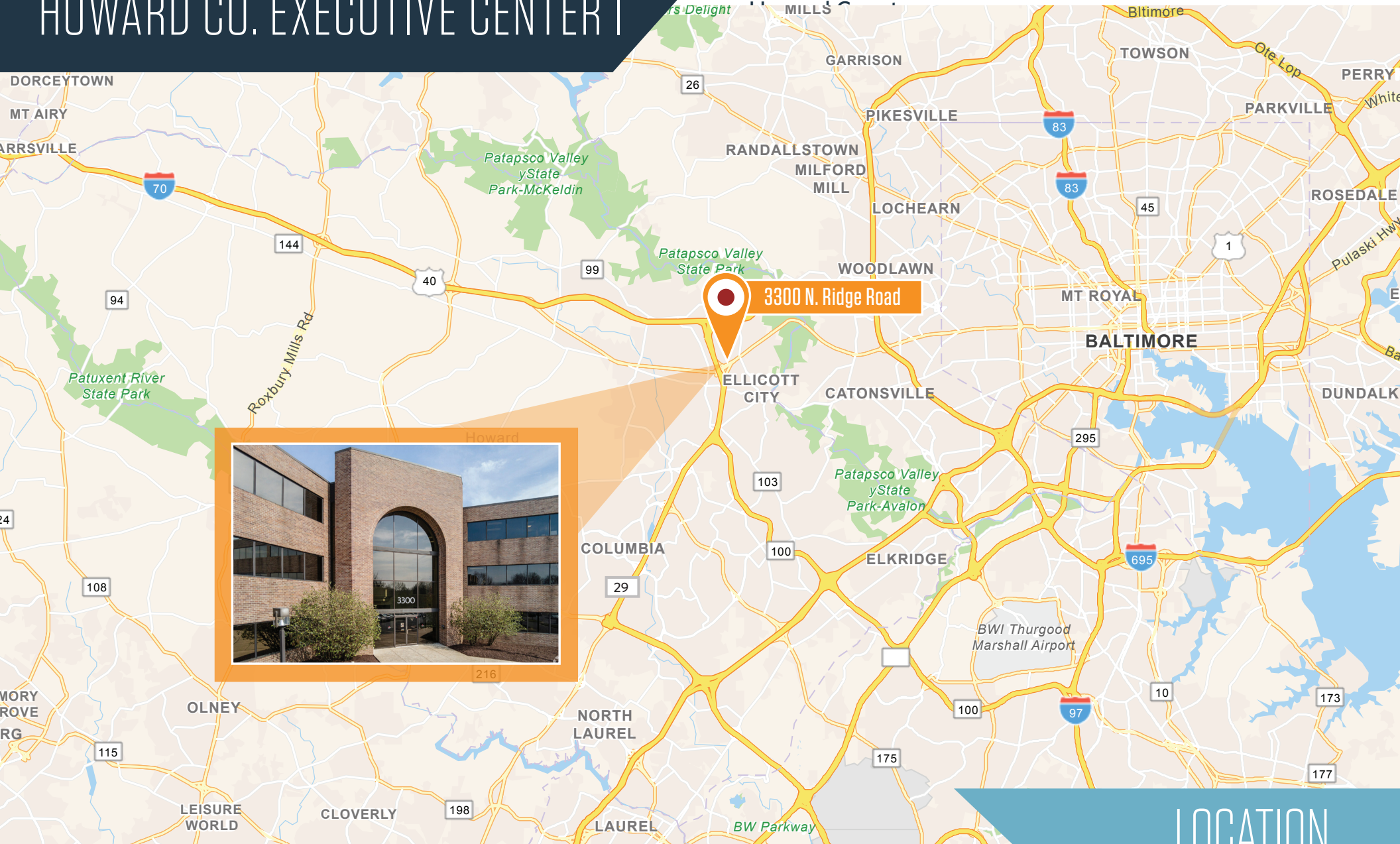
David J. Fritz, CCIM, SIOR
dfritz@klnb.com
443-574-1410

9881 Broken Land Parkway, #300
Columbia, MD 21046
klnb.com

NAIklnb

HOWARD CO. EXECUTIVE CENTER I

3300 North Ridge Road, Ellicott City, MD 21043



LOCATION

Chuck Breitenother
cbreitenother@klnb.com
443-574-1422

David J. Fritz, CCIM, SIOR
dfritz@klnb.com
443-574-1410

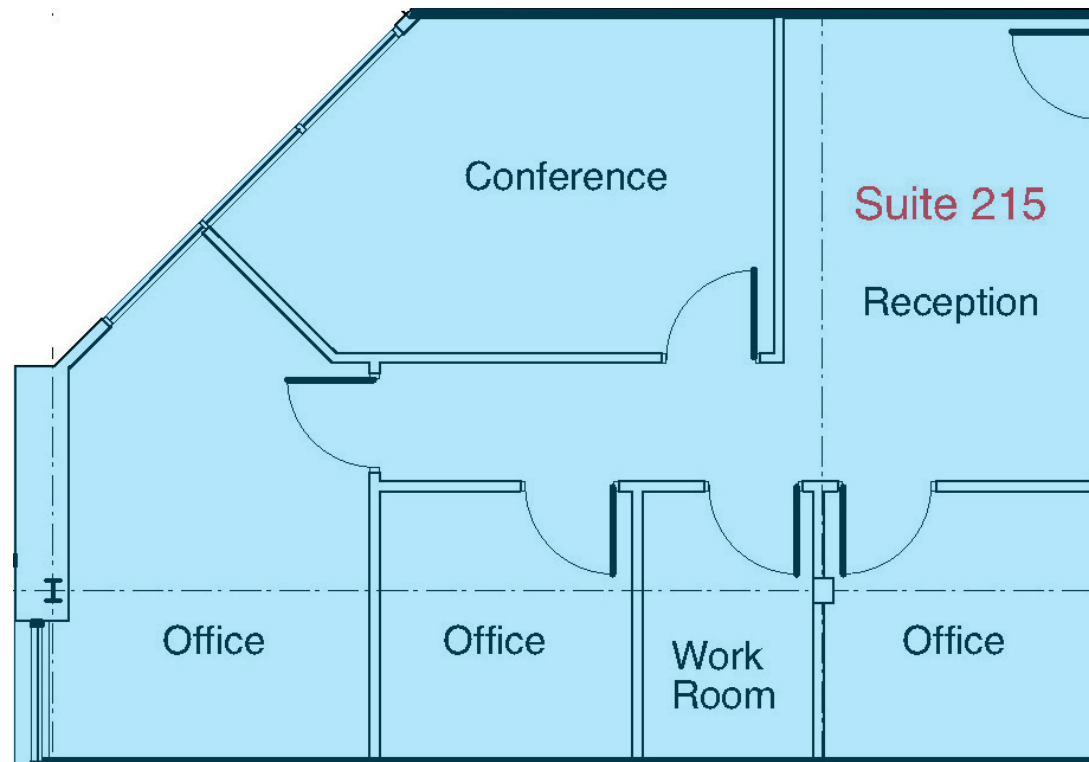
9881 Broken Land Parkway, #300
Columbia, MD 21046
klnb.com



HOWARD CO. EXECUTIVE CENTER I

3300 North Ridge Road, Ellicott City, MD 21043
Howard County

SUITE 215
954 RSF



FLOOR PLANS

Chuck Breitenother
cbreitenother@klnb.com
443-574-1422

David J. Fritz, CCIM, SIOR
dfritz@klnb.com
443-574-1410

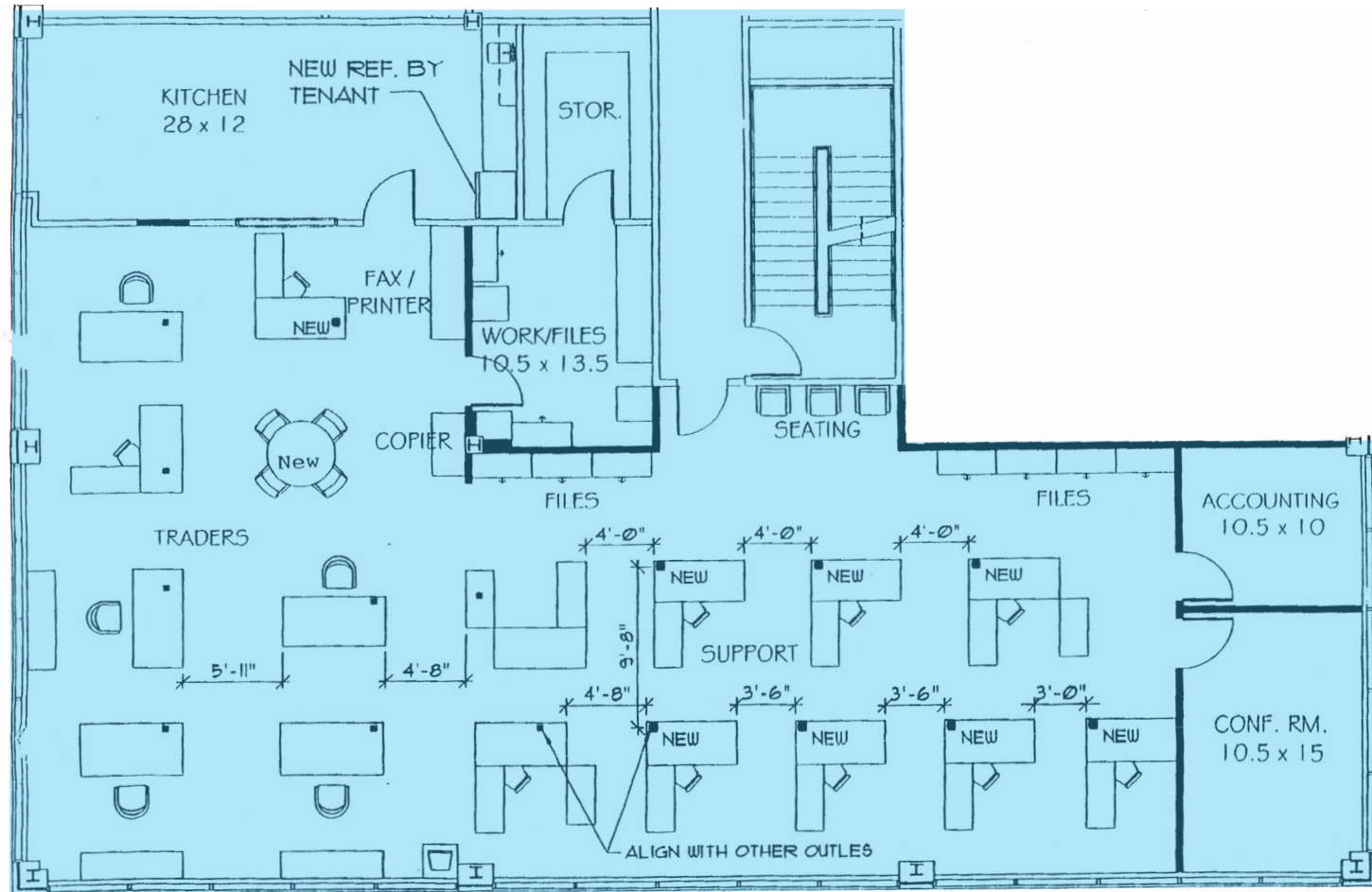
9881 Broken Land Parkway, #300
Columbia, MD 21046
klnb.com

NAIklnb

HOWARD CO. EXECUTIVE CENTER I

3300 North Ridge Road, Ellicott City, MD 21043
Howard County

SUITE 290
3,425 RSF



CORNER SUITE WITH 3 SIDES OF GLASS

FLOOR PLANS

Chuck Breitenother
cbreitenother@klnb.com
443-574-1422

David J. Fritz, CCIM, SIOR
dfritz@klnb.com
443-574-1410

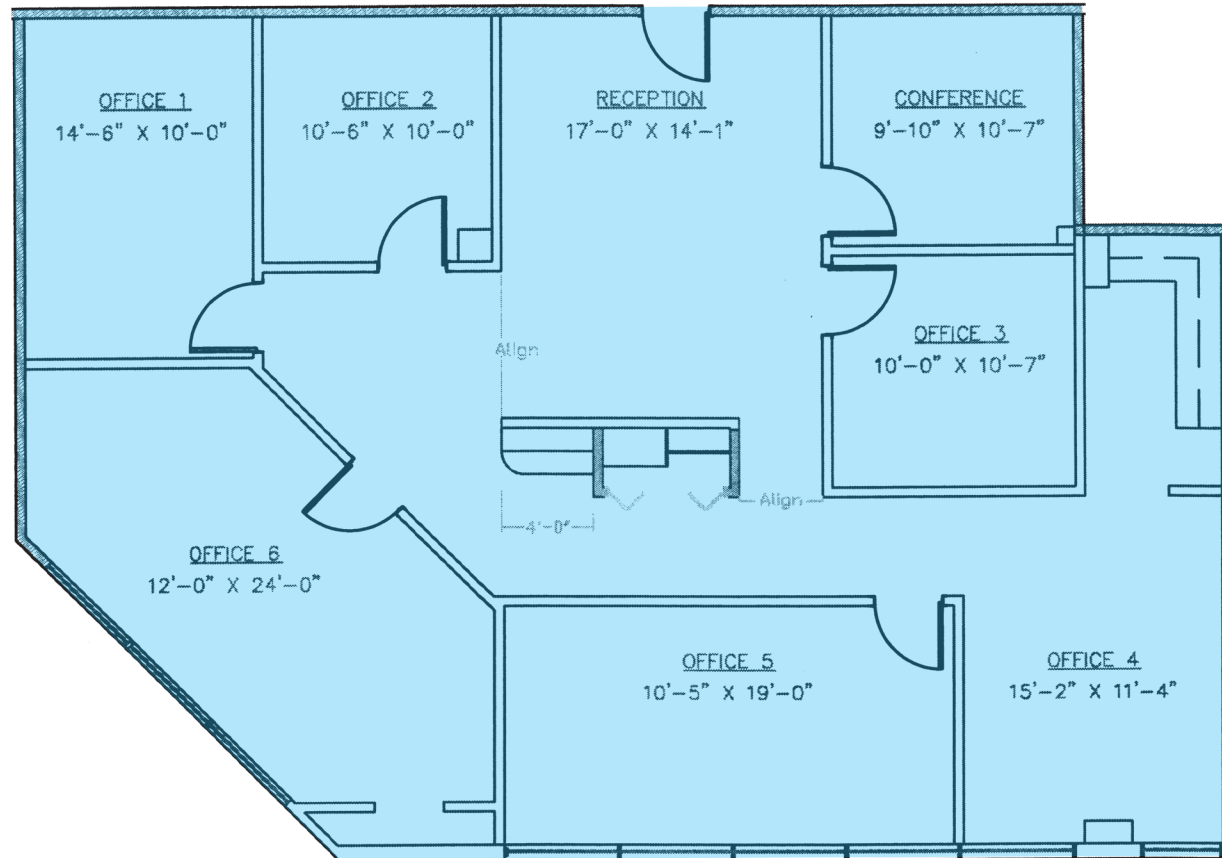
9881 Broken Land Parkway, #300
Columbia, MD 21046
klnb.com

NAIklnb

HOWARD CO. EXECUTIVE CENTER I

3300 North Ridge Road, Ellicott City, MD 21043
Howard County

SUITE 340
2,130 RSF



FLOOR PLANS

Chuck Breitenother
cbreitenother@klnb.com
443-574-1422

David J. Fritz, CCIM, SIOR
dfritz@klnb.com
443-574-1410

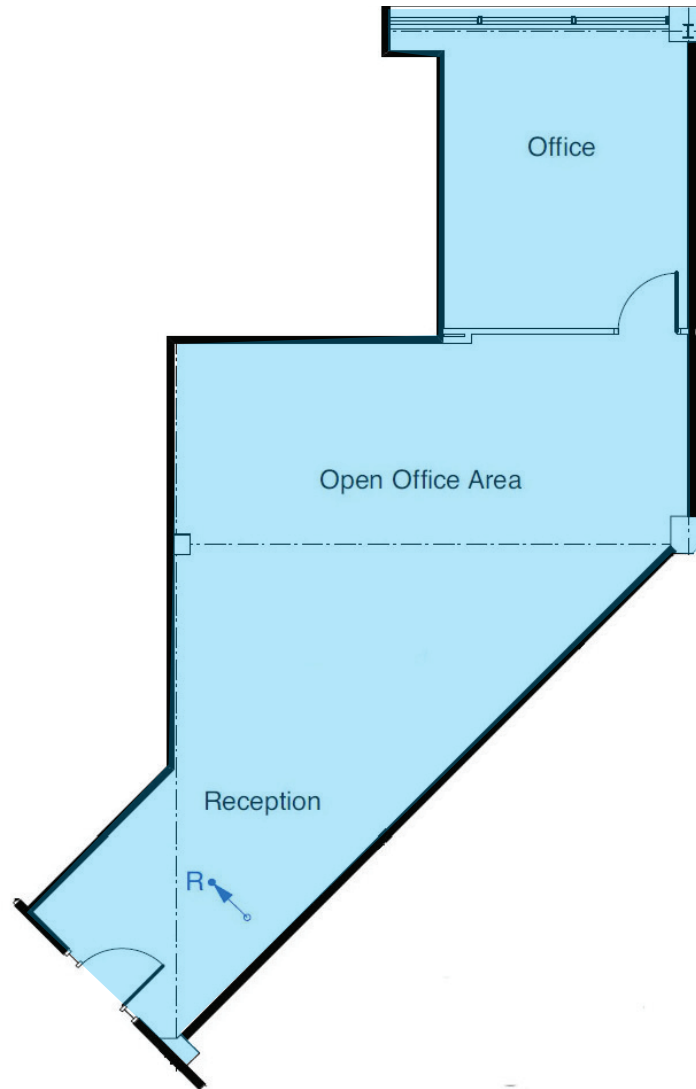
9881 Broken Land Parkway, #300
Columbia, MD 21046
klnb.com



HOWARD CO. EXECUTIVE CENTER I

3300 North Ridge Road, Ellicott City, MD 21043
Howard County

SUITE 360
979 RSF



FLOOR PLANS

Chuck Breitenother
cbreitenother@klnb.com
443-574-1422

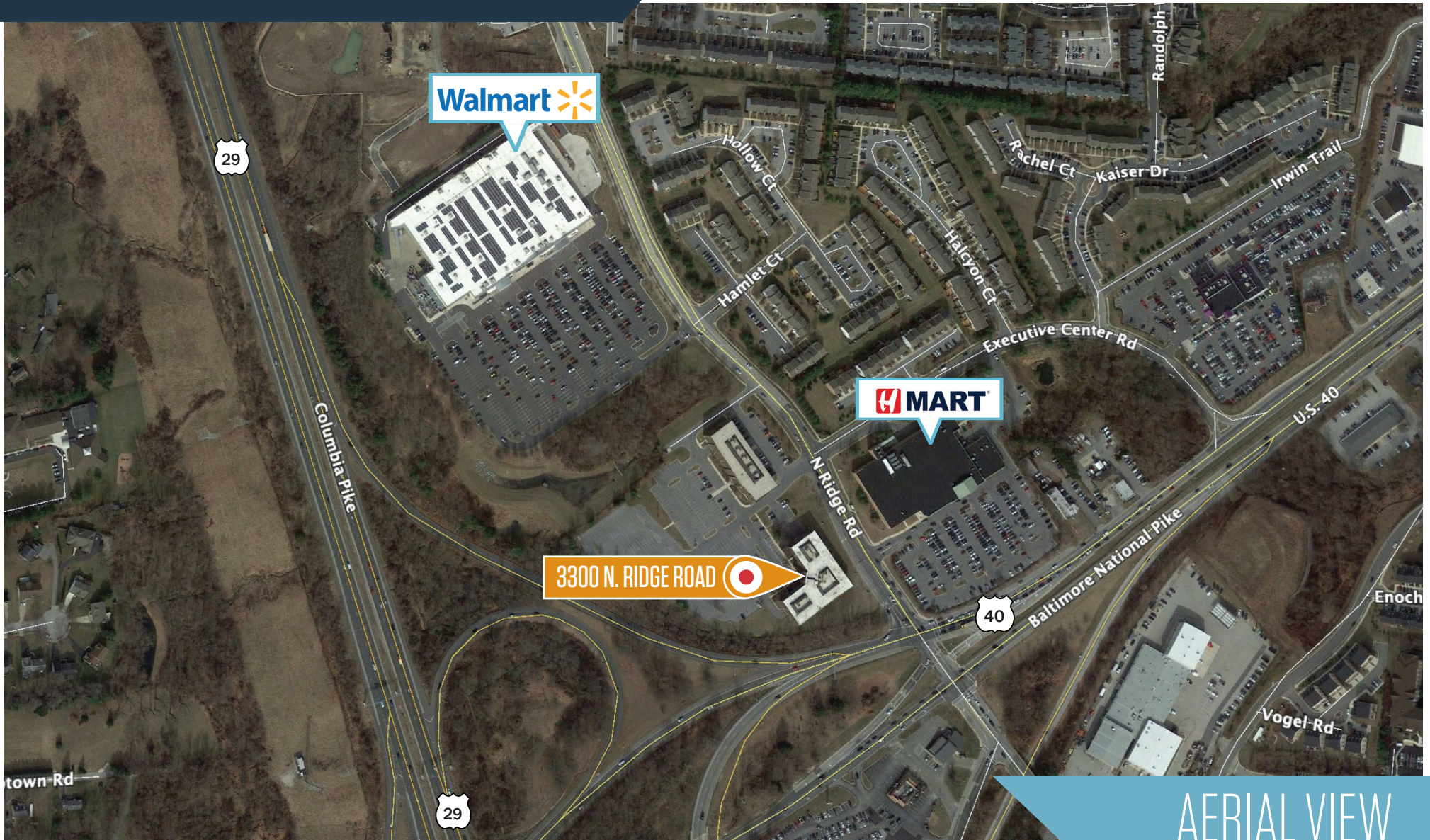
David J. Fritz, CCIM, SIOR
dfritz@klnb.com
443-574-1410

9881 Broken Land Parkway, #300
Columbia, MD 21046
klnb.com

NAIklnb

HOWARD CO. EXECUTIVE CENTER I

3300 North Ridge Road, Ellicott City, MD 21043
Howard County



AERIAL VIEW

Chuck Breitenother
cbreitenother@klnb.com
443-574-1422

David J. Fritz, CCIM, SIOR
dfritz@klnb.com
443-574-1410

9881 Broken Land Parkway, #300
Columbia, MD 21046
klnb.com

NAklnb

HOWARD CO. EXECUTIVE CENTER I

3300 North Ridge Road, Ellicott City, MD 21043
Howard County

[CLICK TO VIEW PROPERTY WEBSITE](#)

For More Information, Please Contact:

Chuck Breitenother
cbreitenother@klnb.com
443-574-1422

David J. Fritz, CCIM, SIOR
dfritz@klnb.com
443-574-1410

9881 Broken Land Parkway, Suite 300
Columbia, MD 21046

klnb.com



[instagram.com/klnbcre](https://www.instagram.com/klnbcre)



[linkedin.com/company/klnb](https://www.linkedin.com/company/klnb)



[facebook.com/KLNBCRE](https://www.facebook.com/KLNBCRE)

While we have no reason to doubt the accuracy of any of the information supplied, we cannot, and do not, guarantee its accuracy. All information should be independently verified prior to a purchase or lease of the property. We are not responsible for errors, omissions, misuse, or misinterpretation of information contained herein and make no warranty of any kind, express or implied, with respect to the property or any other matters.

NAI klnb