



## AVAILABILITY

- Suite LL6: 6,360 SF
- Suite 103: 2,200 SF
- Suite 105: 7,625 SF
- Suite 203/206: up to 6,878 SF

## PROPERTY HIGHLIGHTS

- I - 270 building signage available for large tenants
- Renovated lobby
- Located directly on I - 270
- Ride on bus stop adjacent to property (5 min to Rockville Metro & 10 minutes to Shady Grove Metro)
- Ample free parking
- Loading dock

**KENNETH FELLOWS**

kfellows@klnb.com | 301-222-0210

**ROBERT PUGH**

rpugh@klnb.com | 301-222-0211

**KEIRY MARTINEZ**

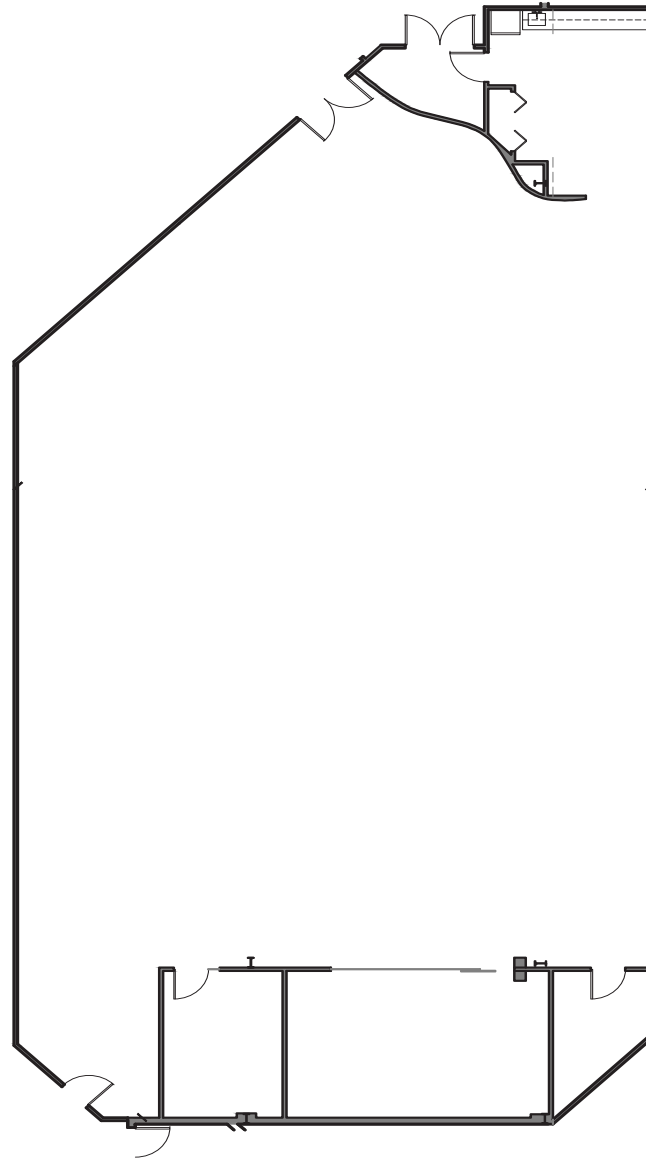
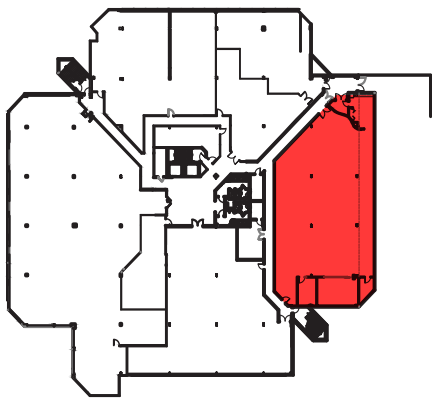
kmartinez@klnb.com | 703-334-5629

# FLOOR PLAN

# WARD BUILDING

## SUITE LL6 6,360 SF

Easy access to the loading dock



**KENNETH FELLOWS**

kfellows@klnb.com | 301-222-0210

**ROBERT PUGH**

rpugh@klnb.com | 301-222-0211

**KEIRY MARTINEZ**

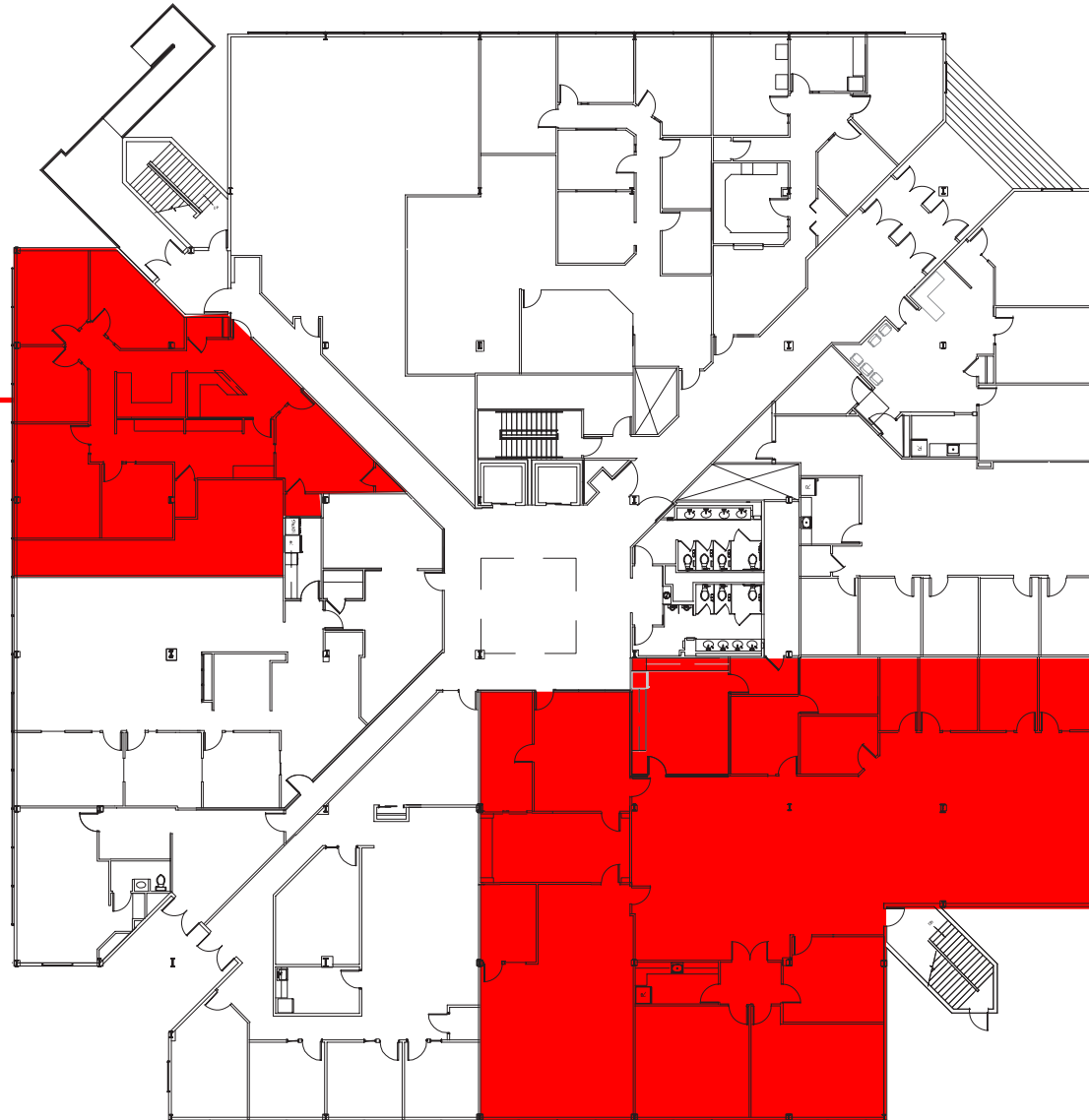
kmartinez@klnb.com | 703-334-5629



# FLOOR PLAN

# WARD BUILDING

**SUITE 103**  
**2,200 SF**



**SUITE 105**  
**7,625 SF**

**KENNETH FELLOWS**

kfellows@klnb.com | 301-222-0210

**ROBERT PUGH**

rpugh@klnb.com | 301-222-0211

**KEIRY MARTINEZ**

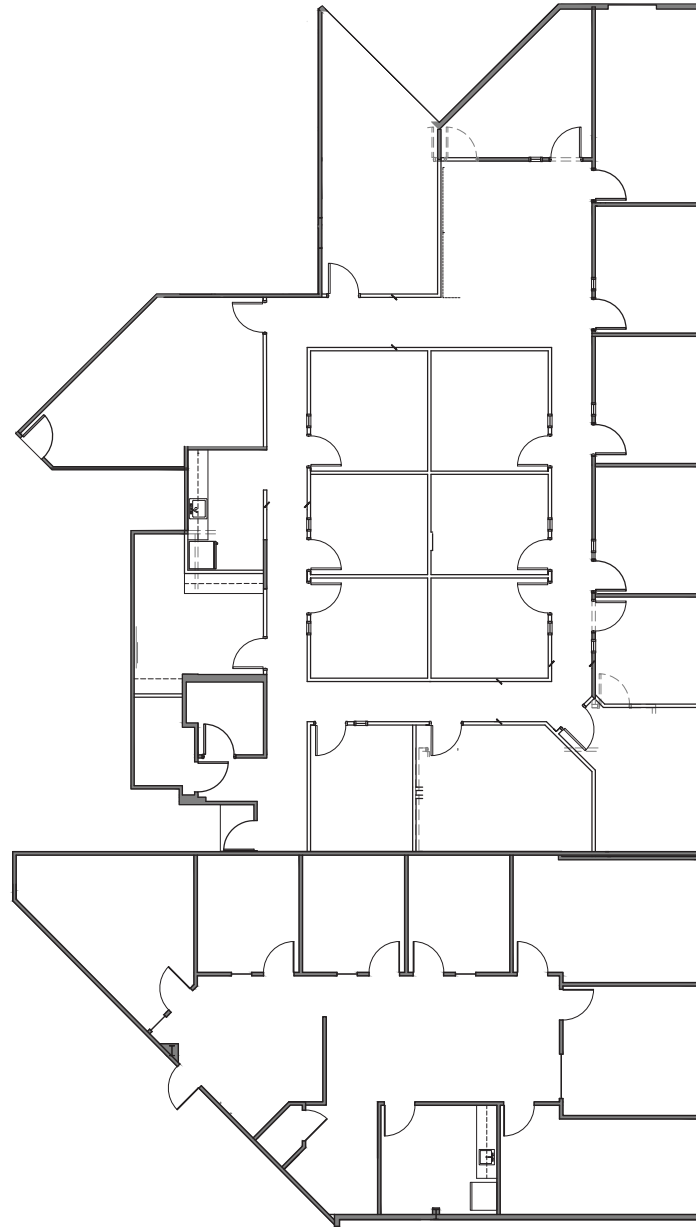
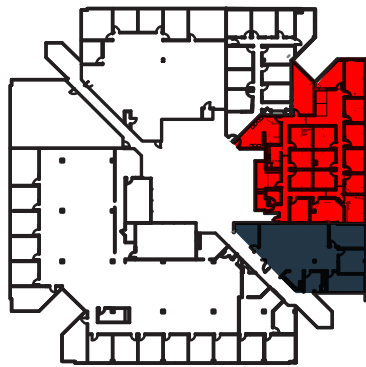
kmartinez@klnb.com | 703-334-5629



# FLOOR PLAN

# WARD BUILDING

**SUITE 203 & 206**  
**6,878 SF**



**SUITE 203**  
**4,596 SF**

**SUITE 206**  
**2,282 SF**

**KENNETH FELLOWS**

kfellows@klnb.com | 301-222-0210

**ROBERT PUGH**

rpugh@klnb.com | 301-222-0211

**KEIRY MARTINEZ**

kmartinez@klnb.com | 703-334-5629





# WARD BUILDING

**FOR MORE INFORMATION, PLEASE CONTACT:**

**klnb.com**



[instagram.com/klnbcre](https://www.instagram.com/klnbcre)



[linkedin.com/company/klnb](https://www.linkedin.com/company/klnb)



[facebook.com/KLNBCRE](https://www.facebook.com/KLNBCRE)

**CLICK TO VIEW PROPERTY WEBSITE**

While we have no reason to doubt the accuracy of any of the information supplied, we cannot, and do not, guarantee its accuracy. All information should be independently verified prior to a purchase or lease of the property. We are not responsible for errors, omissions, misuse, or misinterpretation of information contained herein and make no warranty of any kind, express or implied, with respect to the property or any other matters.