



Existing Functional Lab

1530

1530

Existing Lab Space

PROPERTY HIGHLIGHTS

- Year Built: 1968/1999
- Building Class: B
- Building Height: 2 stories
- Parking: 60 free surface
- Building Size : 17,800 SF



Located off Route-355, across from Twinbrook Metro Station, and within walking distance to Congressional Plaza

Building Ammenities:

- 175 kW Back Up Generator
- Biological Safety Cabinet
- Cold Box
- Conference Room with divider
- Chemical Fume Hood Flammable Cabinet
- Autoclaves
- Softwater System for Steam Boiler

KENNETH FELLOWS

kfellows@klnb.com | 301-222-0210

ROBERT PUGH

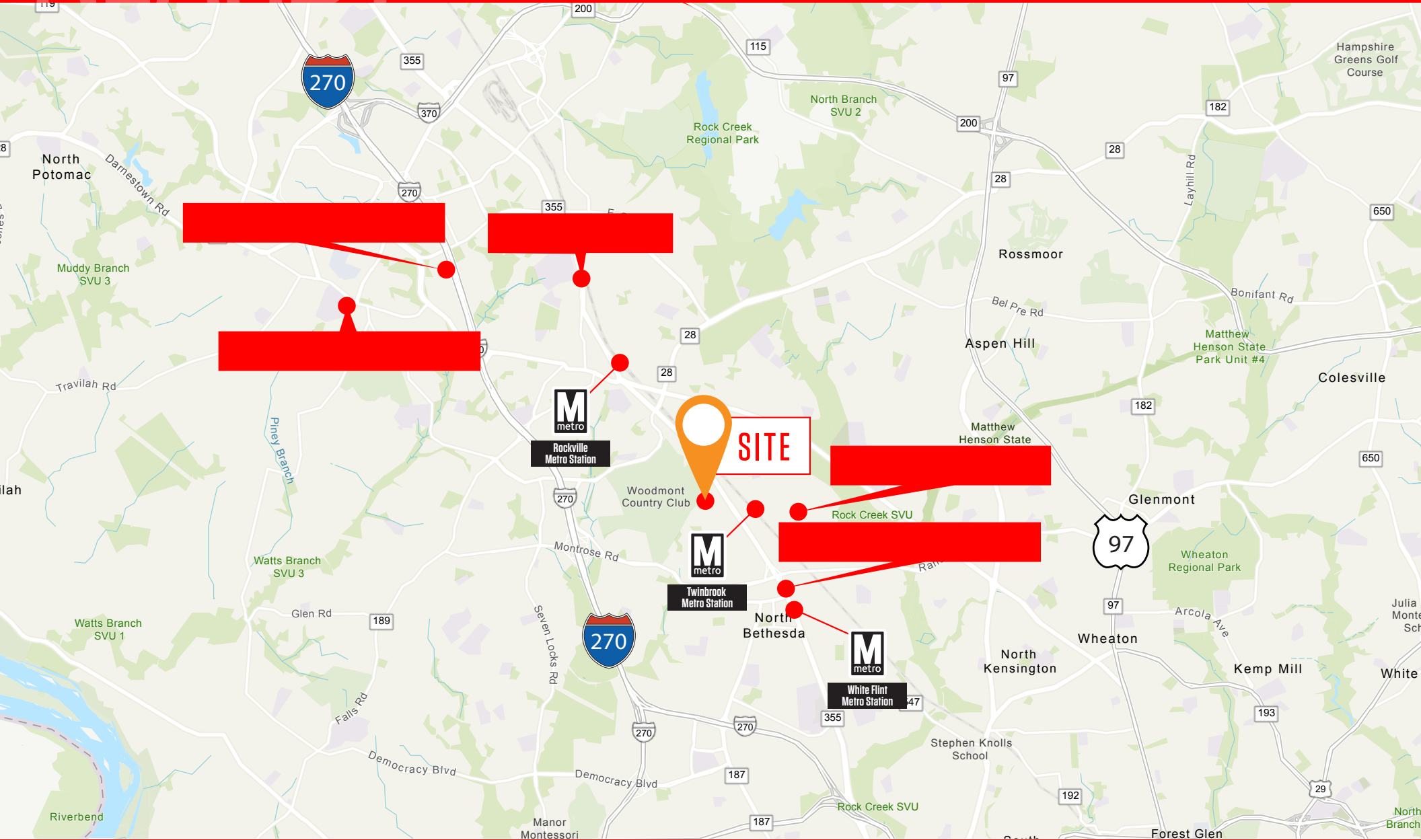
rpugh@klnb.com | 301-222-0211

KEIRY MARTINEZ

kmartinez@klnb.com | 703-334-5629

NEARBY

1530 EAST JEFFERSON ST



KENNETH FELLOWS

kfellows@klnb.com | 301-222-0210

ROBERT PUGH

rpugh@klnb.com | 301-222-0211

KEIRY MARTINEZ

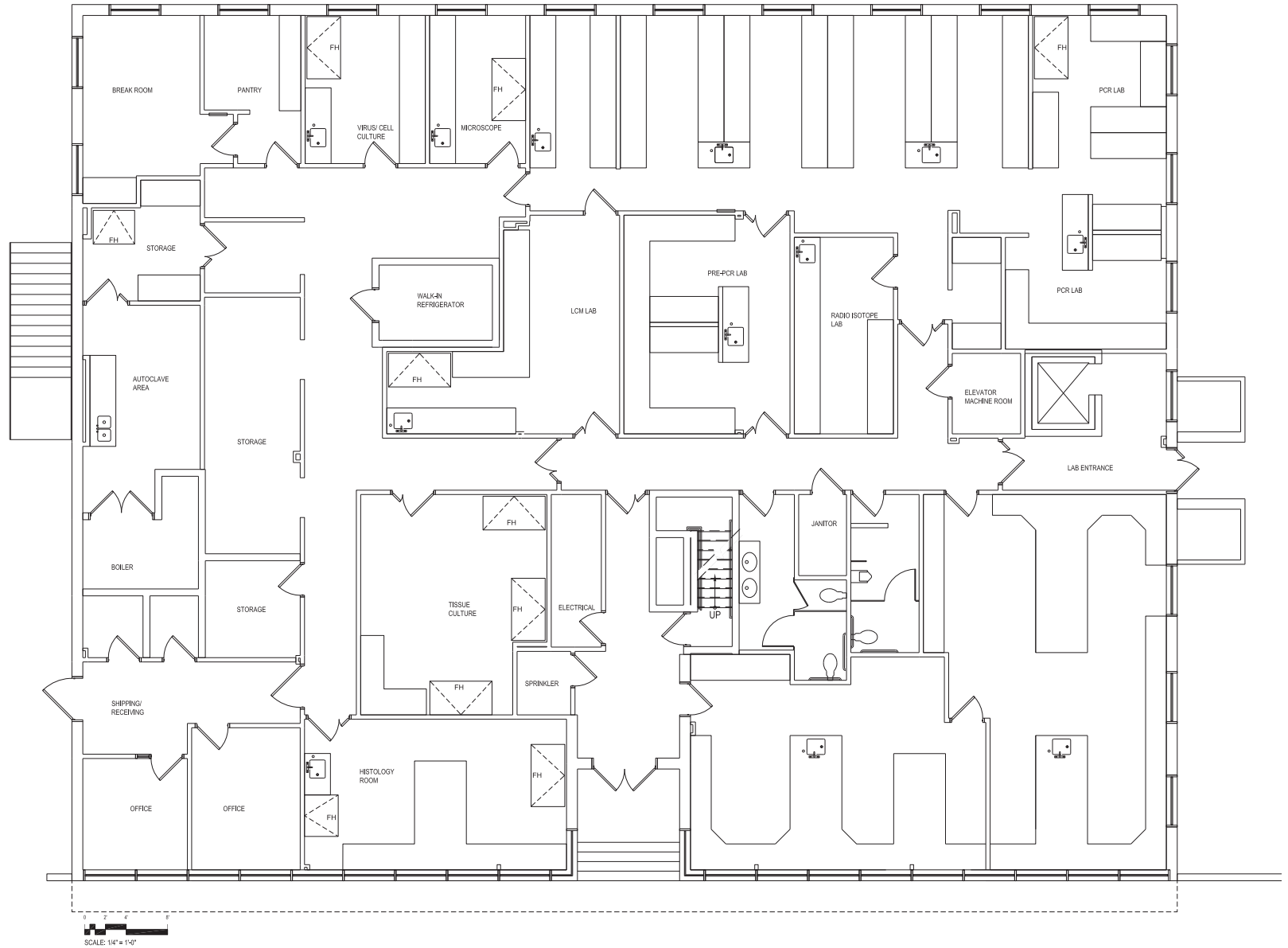
kmartinez@klnb.com | 703-334-5629



FLOOR PLAN

1530 EAST JEFFERSON ST

FIRST FLOOR
8,900 SF



KENNETH FELLOWS

kfellows@klnb.com | 301-222-0210

ROBERT PUGH

rpugh@klnb.com | 301-222-0211

KEIRY MARTINEZ

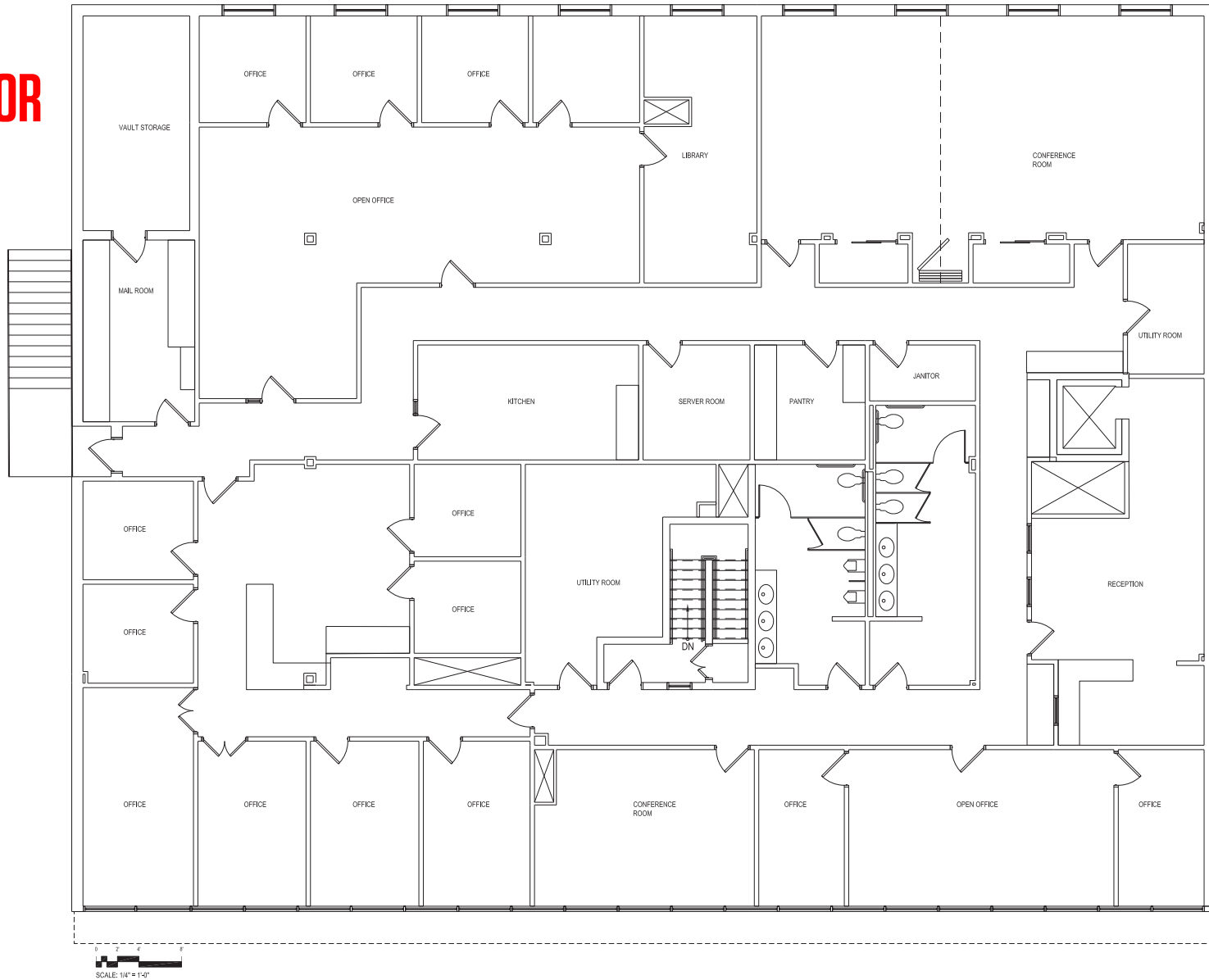
kmartinez@klnb.com | 703-334-5629



FLOOR PLAN

1530 EAST JEFFERSON ST

SECOND FLOOR
8,900 SF



KENNETH FELLOWS

kfellows@klnb.com | 301-222-0210

ROBERT PUGH

rpugh@klnb.com | 301-222-0211

KEIRY MARTINEZ

kmartinez@klnb.com | 703-334-5629





1530 EAST JEFFERSON ST

FOR MORE INFORMATION, PLEASE CONTACT:

klnb.com

 facebook.com/KLNBCRE

 [@KLNBCRE](https://twitter.com/KLNBCRE)

 linkedin.com/company/klnb

 instagram.com/klnbcre

CLICK TO VIEW PROPERTY WEBSITE

While we have no reason to doubt the accuracy of any of the information supplied, we cannot, and do not, guarantee its accuracy. All information should be independently verified prior to a purchase or lease of the property. We are not responsible for errors, omissions, misuse, or misinterpretation of information contained herein and make no warranty of any kind, express or implied, with respect to the property or any other matters.