

2273 RESEARCH BLVD

2273 Research Blvd, Suite 220
Rockville, MD 20850
Montgomery County



OFFICE SPACE FOR SUBLEASE

BUILDING INFORMATION

- 2nd floor
- Sublease runs through 4/30/26
- 4,852 SF
- \$25.00 PSF
- Plug and Play
- Available 10/01/2024

OWNED & MANAGED BY:



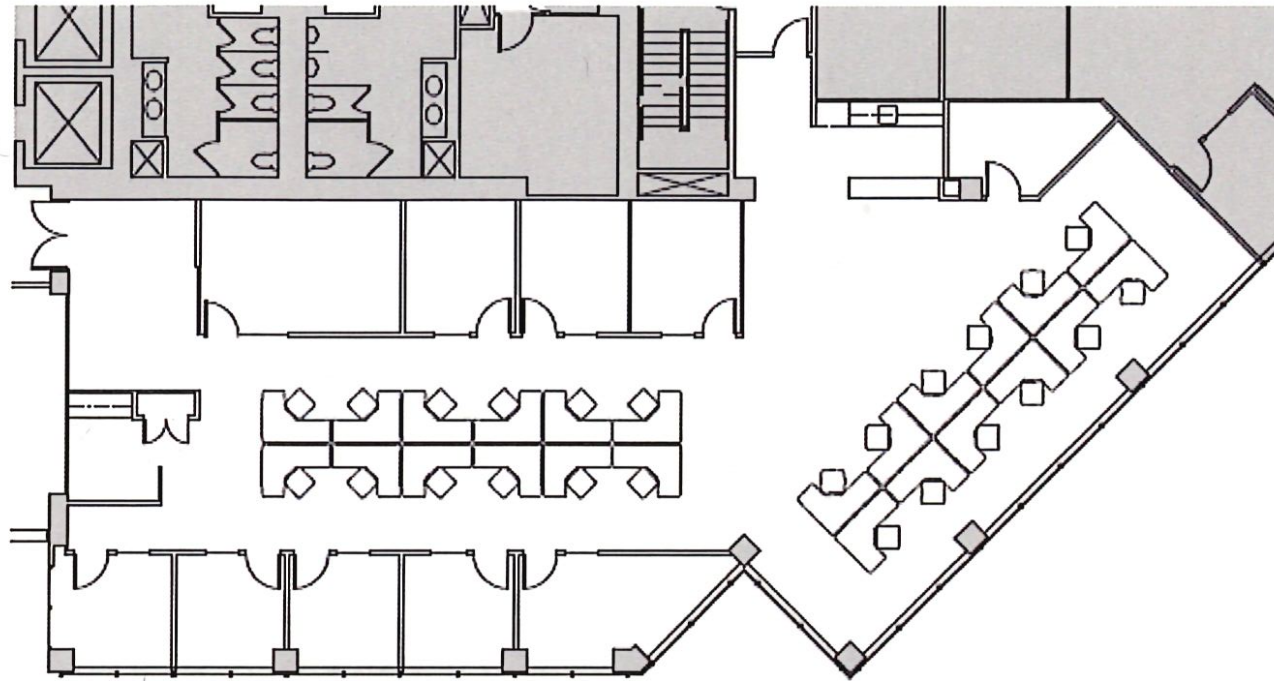
Kenneth Fellows
kfellows@klnb.com
240-994-0311



2273 RESEARCH BLVD

2273 Research Blvd, Suite 220
Rockville, MD 20850
Montgomery County

SUITE 220
4,852 SF



SITE PLAN

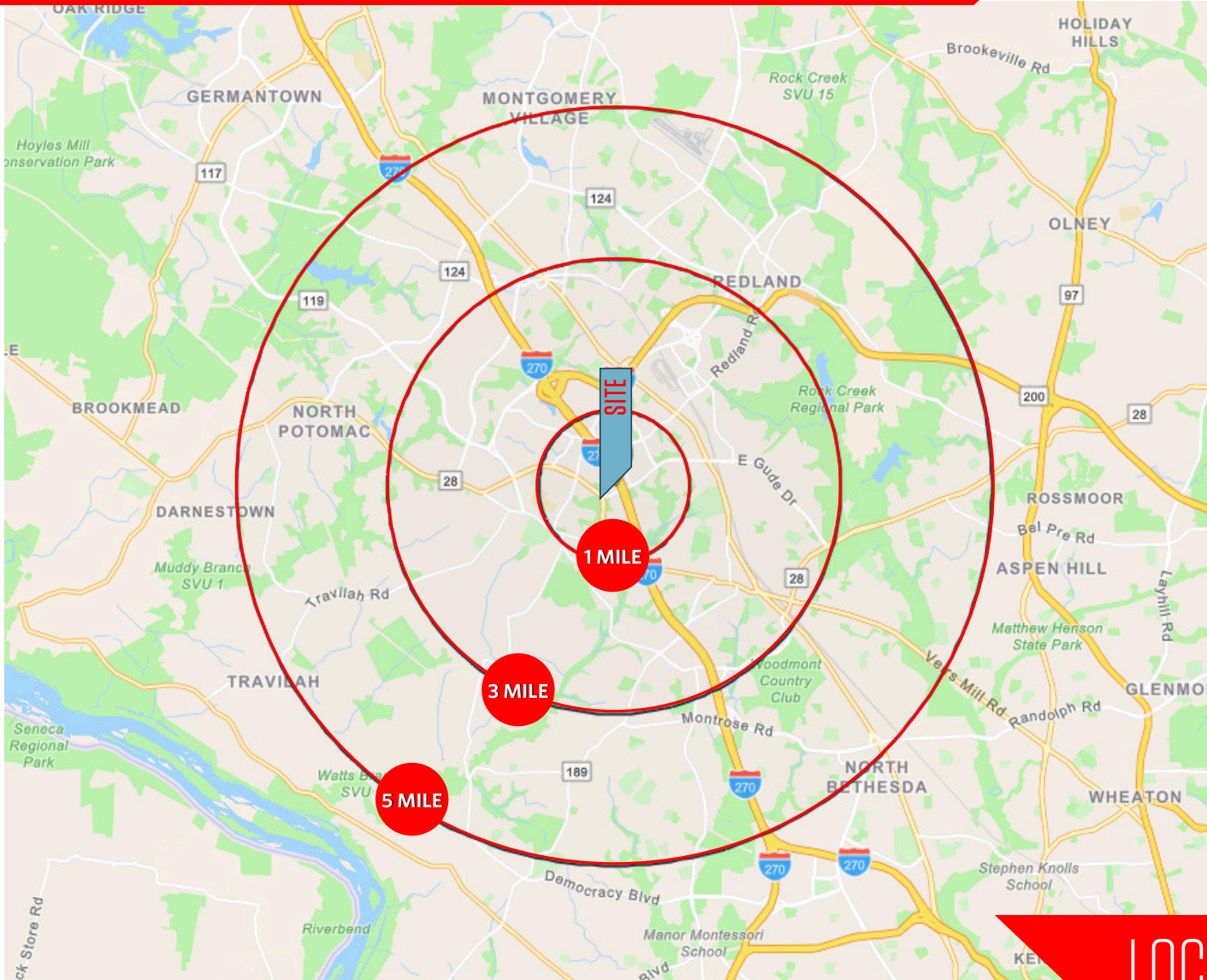
Kenneth Fellows
kfellows@klnb.com
240-994-0311

2273 Research Blvd, Suite 150
Rockville, MD 20850
klnb.com



2273 RESEARCH BLVD

2273 Research Blvd, Suite 220
 Rockville, MD 20850
 Montgomery County



4,872 SF

Population	13,090	119,219	285,977
Average HH Income	\$112,515	\$117,721	\$118,569

I-270	189,022 ADT
West Gude Dr	18,482 ADT

LOCATION & DEMOGRAPHICS

Kenneth Fellows
 kfellows@klnb.com
 240-994-0311

2273 Research Blvd, Suite 150
 Rockville, MD 20850
klnb.com



2273 RESEARCH BLVD

2273 Research Blvd, Suite 220
Rockville, MD 20850
Montgomery County

CLICK TO VIEW PROPERTY WEBSITE

For More Information, Please Contact:

Kenneth Fellows

kfellows@klnb.com

240-994-0311

12435 Park Potomac Ave, Suite 250,
Rockville, MD, 20854

[instagram.com/klnbcre](https://www.instagram.com/klnbcre)

[linkedin.com/company/klnb](https://www.linkedin.com/company/klnb)

[facebook.com/KLNBCRE](https://www.facebook.com/KLNBCRE)

While we have no reason to doubt the accuracy of any of the information supplied, we cannot, and do not, guarantee its accuracy. All information should be independently verified prior to a purchase or lease of the property. We are not responsible for errors, omissions, misuse, or misinterpretation of information contained herein and make no warranty of any kind, express or implied, with respect to the property or any other matters.

The logo for klnb, featuring the lowercase letters 'klnb' in a bold, sans-serif font. The 'k' and 'l' are connected, and the 'n' and 'b' are also connected. The letters are a dark blue color.