



## PROPERTY OVERVIEW

- Strategically located at the junction of I-95/495 and US Route 50 with direct ramp access from both highways, Metro Plaza provides unsurpassed ease of access for visitors and employees.
- Direct access ramps into and out of the park and excellent visibility from 495.
- Within walking distance to the New Carrollton Metro Station with service by MetroRail, Amtrak and MARC providing commuter access for the greater Metropolitan DC, the greater Baltimore area and beyond.
- 30 Minutes to Baltimore Washington International (BWI) and Reagan National (DCA) Airports.

## BUILDING INFO.

- Type: Office
- RBA: 57,841 SF
- Stories: 3
- Year Built: 1979
- Parking: 260-Surface

# MARKET

# ONE METRO PLAZA

8100 PROFESSIONAL PL, LANDOVER, MD 20785, PRINCE GEORGE'S COUNTY



**KENNETH FELLOWS**

kfellows@klnb.com | 301-222-0210

**ROBERT PUGH**

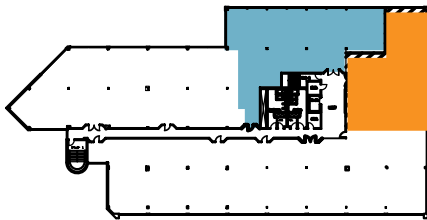
rpugh@klnb.com | 301-222-0211

**KEIRY MARTINEZ**

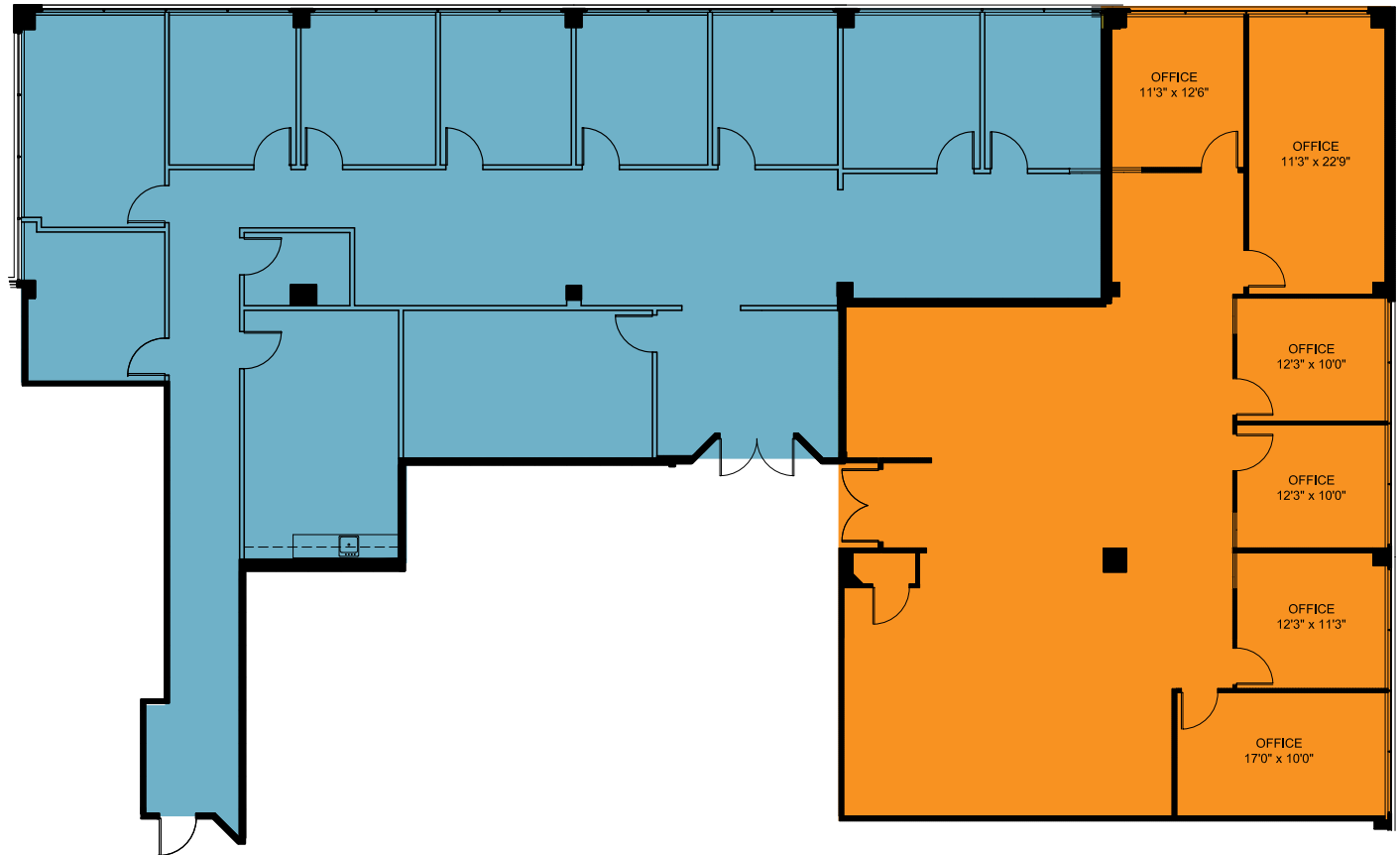
kmartinez@klnb.com | 703-334-5629



**SUITE 304-306:**  
**6,291 SF**

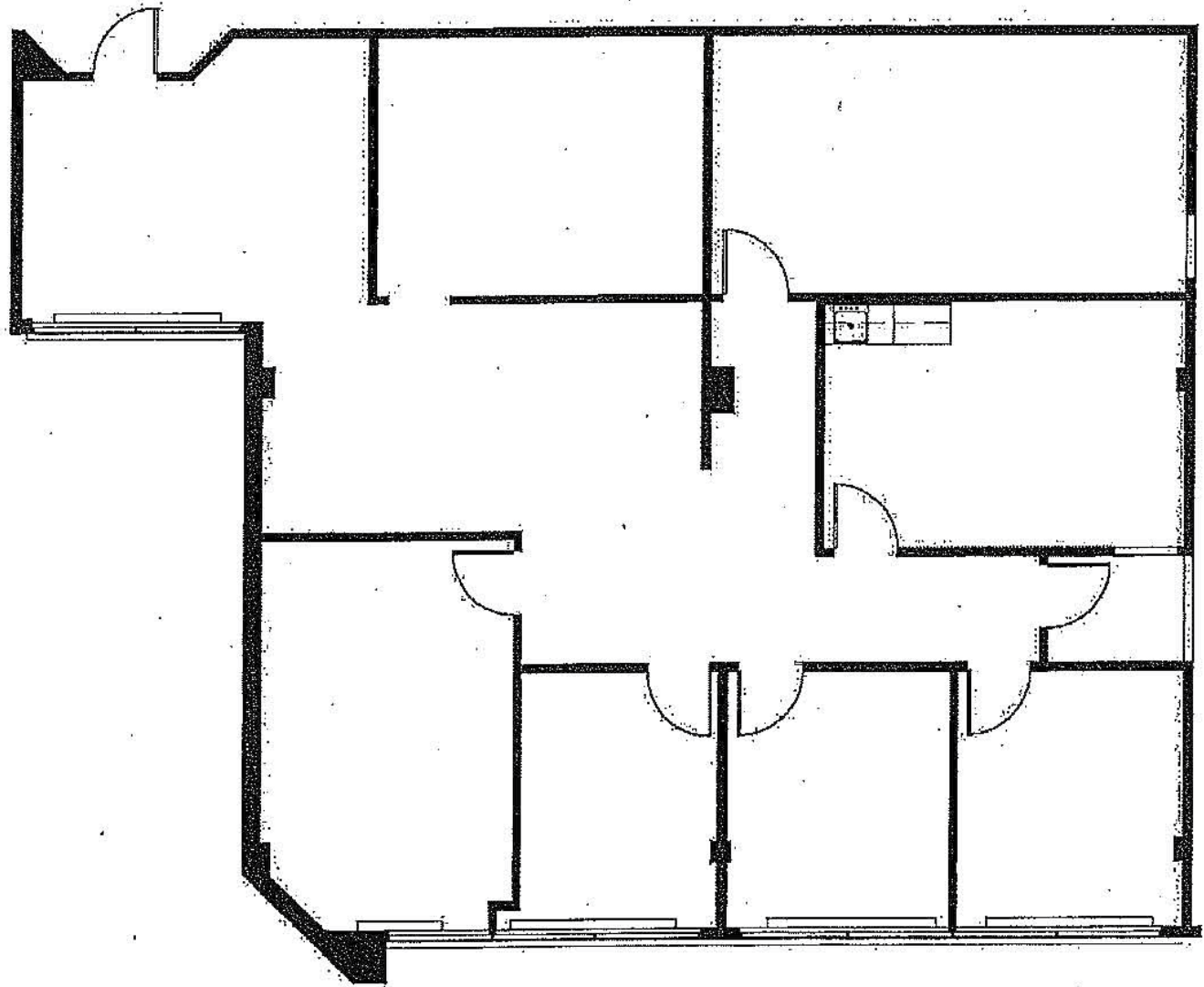
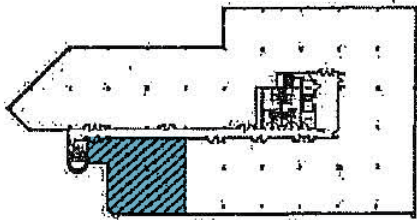


**SUITE 306: 3,531 SF**



**SUITE 304: 2,760 SF**

**SUITE 310: 2,277 SF**



**KENNETH FELLOWS**

kfellows@klnb.com | 301-222-0210

**ROBERT PUGH**

rpugh@klnb.com | 301-222-0211

**KEIRY MARTINEZ**

kmartinez@klnb.com | 703-334-5629



# ONE METRO PLAZA

8100 PROFESSIONAL PL, LANDOVER, MD 20785, PRINCE GEORGE'S COUNTY

## FOR MORE INFORMATION, PLEASE CONTACT:

### **KENNETH FELLOWS**

kfellows@klnb.com  
301-222-0210

### **ROBERT PUGH**

rpugh@klnb.com  
301-222-0211

### **KEIRY MARTINEZ**

kmartinez@klnb.com  
703-334-5629

12435 Park Potomac Ave, Suite 250, Rockville, MD, 20854

.....

**klnb.com**



[instagram.com/klnbcre](https://www.instagram.com/klnbcre)



[linkedin.com/company/klnb](https://www.linkedin.com/company/klnb)



[facebook.com/KLNBCRE](https://www.facebook.com/KLNBCRE)

**CLICK TO VIEW PROPERTY WEBSITE**

While we have no reason to doubt the accuracy of any of the information supplied, we cannot, and do not, guarantee its accuracy. All information should be independently verified prior to a purchase or lease of the property. We are not responsible for errors, omissions, misuse, or misinterpretation of information contained herein and make no warranty of any kind, express or implied, with respect to the property or any other matters.