

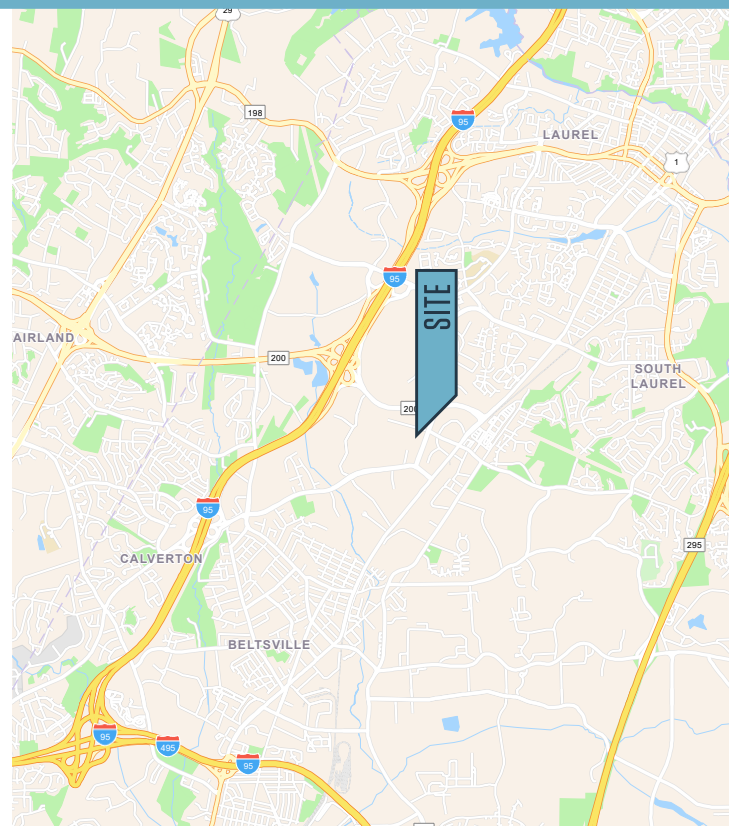


FOR LEASE

PROPERTY HIGHLIGHTS:

Suite Highlights

- 8,138 RSF immediately available
- Energy efficient HVAC
- Private suite entrance
- 24' ceiling height
- Loading dock
- Ample parking (2.8/1,000 parking ratio)
- Located 20 minutes from Maryland's Shady Grove Life Sciences Center, 9000 Virginia Manor Road has direct access to I-95 and is minutes to the Intercounty Connector (Route 200), which connects I-270 to I-95.



9000 VIRGINIA MANOR ROAD

Beltsville, MD 20705 | Prince George's County

MARKET AERIAL



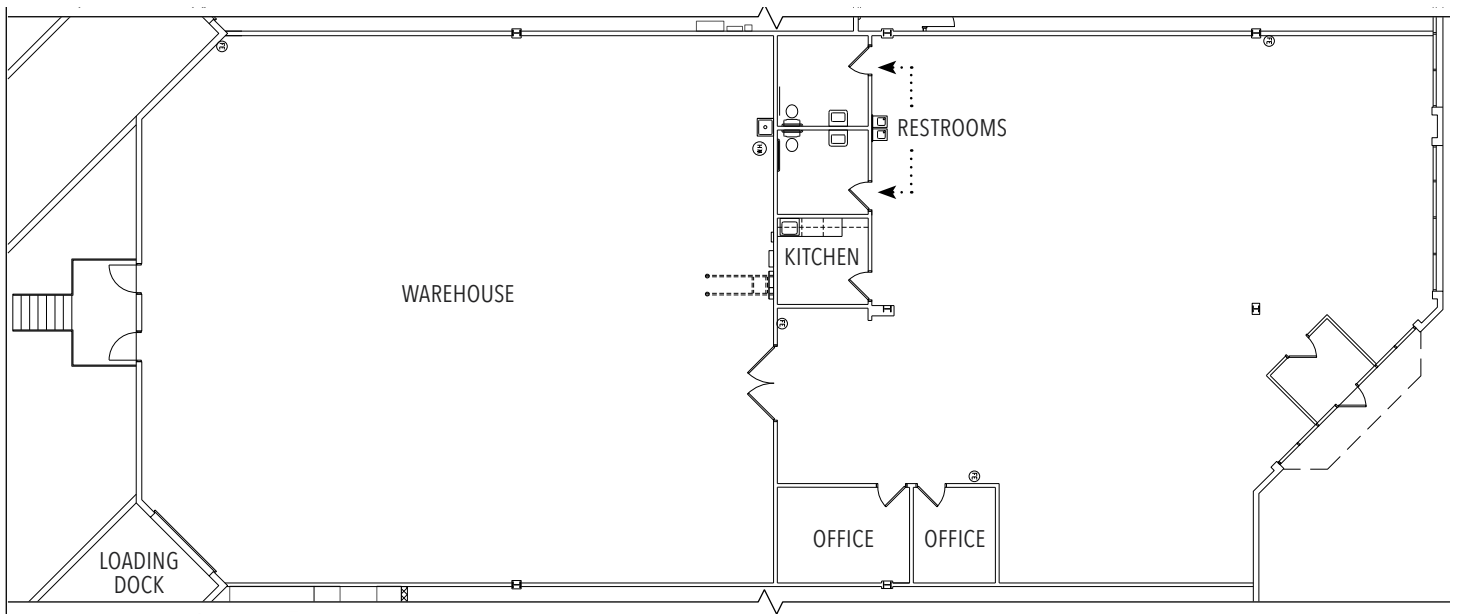
Kenneth Fellows
kfellows@klnb.com
301-222-0210

Robert Pugh
rpugh@klnb.com
301-222-0211

Keiry Martinez
kmartinez@klnb.com
703-334-5629

FLOOR PLAN

FIRST FLOOR
8,138 SF



9000 VIRGINIA MANOR ROAD

Beltsville, MD 20705 | Prince George's County

[CLICK TO VIEW PROPERTY WEBSITE](#)

For More Information, Please Contact:

Kenneth Fellows

kfellows@klnb.com

301-222-0210

Robert Pugh

rpugh@klnb.com

301-222-0211

Keiry Martinez

kmartinez@klnb.com

703-334-5629

12435 Park Potomac Ave,
Suite 250, Rockville, MD,
20854

klnb.com

 facebook.com/KLNBCRE

 [@KLNBCRE](https://twitter.com/KLNBCRE)

 linkedin.com/company/klnb

 instagram.com/klnbcre

While we have no reason to doubt the accuracy of any of the information supplied, we cannot, and do not, guarantee its accuracy. All information should be independently verified prior to a purchase or lease of the property. We are not responsible for errors, omissions, misuse, or misinterpretation of information contained herein and make no warranty of any kind, express or implied, with respect to the property or any other matters.

klnb



ALEXANDRIA®