



FOR LEASE

PROPERTY HIGHLIGHTS

Building Specifications

- Building Type: Industrial
- 11800-11836 Coakley Cir
 - Building Size: 42,258 SF
 - Year Built: 1973
- 11844-11882 Coakley Cir
 - Building Size: 43,078 SF
 - Year Built: 1974
 - The bays available at 11832-11836 Coakley

Features

- Ample surface parking
- Public transportation is available through Montgomery County's "Ride On" program
- Abundance of amenities, food service options and retail centers within walking distance

Location

- Quick access to I-270 and I-495
- Two WMATA Metro stops (Twinbrook & North Bethesda) are within 2 miles

MARKET AERIAL



CHARLESTON BUSINESS CENTER

11800-11882 Coakley Circle | Rockville, MD

ZOOMED-IN AERIAL



Kenneth Fellows
kfellows@klnb.com
301-222-0210

Robert Pugh
rpugh@klnb.com
301-222-0211

Keiry Martinez
kmartinez@klnb.com
703-334-5629

CHARLESTON BUSINESS CENTER

11800-11882 Coakley Circle | Rockville, MD

PHOTO



Kenneth Fellows
kfellows@klnb.com
301-222-0210

Robert Pugh
rpugh@klnb.com
301-222-0211

Keiry Martinez
kmartinez@klnb.com
703-334-5629

PHOTO



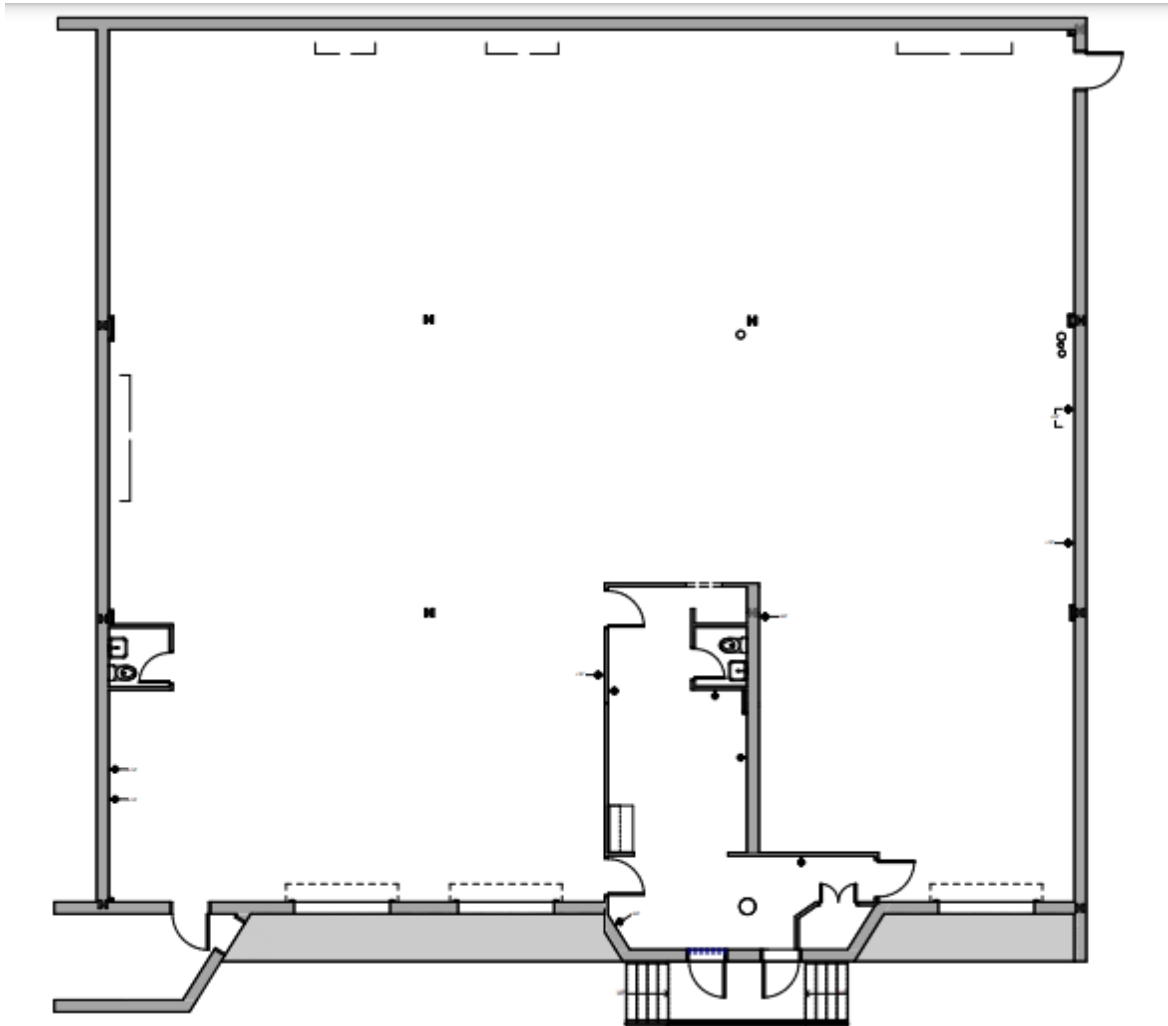
CHARLESTON BUSINESS CENTER

11800-11882 Coakley Circle | Rockville, MD

FLOOR PLAN

11814 COAKLEY CIR

6,480 SF



Kenneth Fellows
kfellows@klnb.com
301-222-0210

Robert Pugh
rpugh@klnb.com
301-222-0211

Keiry Martinez
kmartinez@klnb.com
703-334-5629

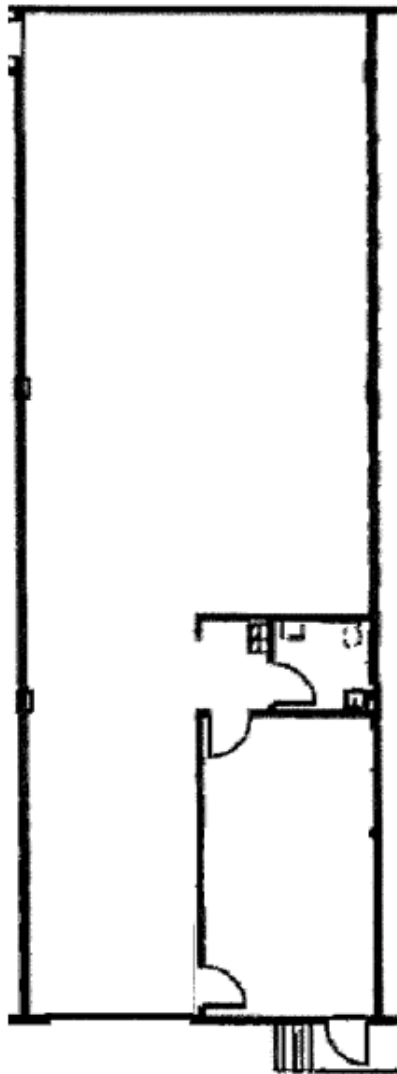
2273 Research Blvd, Suite 150
Rockville, MD 20850
klnb.com

CHARLESTON BUSINESS CENTER

11800-11882 Coakley Circle | Rockville, MD

FLOOR PLAN

11872 COAKLEY CIR
2,160 SF



Kenneth Fellows
kfellows@klnb.com
301-222-0210

Robert Pugh
rpugh@klnb.com
301-222-0211

Keiry Martinez
kmartinez@klnb.com
703-334-5629

2273 Research Blvd, Suite 150
Rockville, MD 20850
klnb.com

CHARLESTON BUSINESS CENTER

11800-11882 Coakley Circle | Rockville, MD

[CLICK TO VIEW PROPERTY WEBSITE](#)

For More Information, Please Contact:

Kenneth Fellows

kfellows@klnb.com

301-222-0210

Robert Pugh

rpugh@klnb.com

301-222-0211

Keiry Martinez

kmartinez@klnb.com

703-334-5629

12435 Park Potomac Ave, Suite 250,
Rockville, MD, 20854

klnb.com



[instagram.com/klnbcre](https://www.instagram.com/klnbcre)



[linkedin.com/company/klnb](https://www.linkedin.com/company/klnb)



[facebook.com/KLNBCRE](https://www.facebook.com/KLNBCRE)

While we have no reason to doubt the accuracy of any of the information supplied, we cannot, and do not, guarantee its accuracy. All information should be independently verified prior to a purchase or lease of the property. We are not responsible for errors, omissions, misuse, or misinterpretation of information contained herein and make no warranty of any kind, express or implied, with respect to the property or any other matters.

klnb