

klnb

ESJ CAPITAL PARTNERS

WESTECH BUSINESS PARK - TALBOT

12120 Plum Orchard Dr, Silver Spring, MD 20904



OFFICE SPACE FOR LEASE

klnb.com



ORCHARD CENTER

KOHL'S

PETSMART

WESTECH VILLAGE CORNER

Future 200,000 SF 390 Unit
Apartment and Multiple Two-Over-Twos
Est. Delivery: 2025

WHITE OAK TOWN
CENTER DEVELOPMENT

INSPIRE NAIL BAR & SPA

**MONTGOMERY COLLEGE EAST
EDUCATION CENTER**

Adventist HealthCare White Oak Medical Center

VIVA WHITE OAK DEVELOPMENT

PROPERTY HIGHLIGHTS

- Type: 3 Star Office/Flex
- RBA: 38,132 SF
- Stories: 1
- Class: B
- Construction: Reinforced Concrete
- Year Built: 1989
- Parking: Surface - 116 (3.30/1,000 SF)
- Walk Score®: Somewhat Walkable (50)
- Transit Score®: Some Transit (47)

PROXIMITY

- ICC MD-200 2.0 mi.
- I-95 2.1 mi.
- I-495 4.2 mi.
- Univ. of Maryland. 5.2 mi.
- Downtown D.C 12.9 mi.
- BWI Airport 25.7 mi.

ABOUT NEW OWNERSHIP

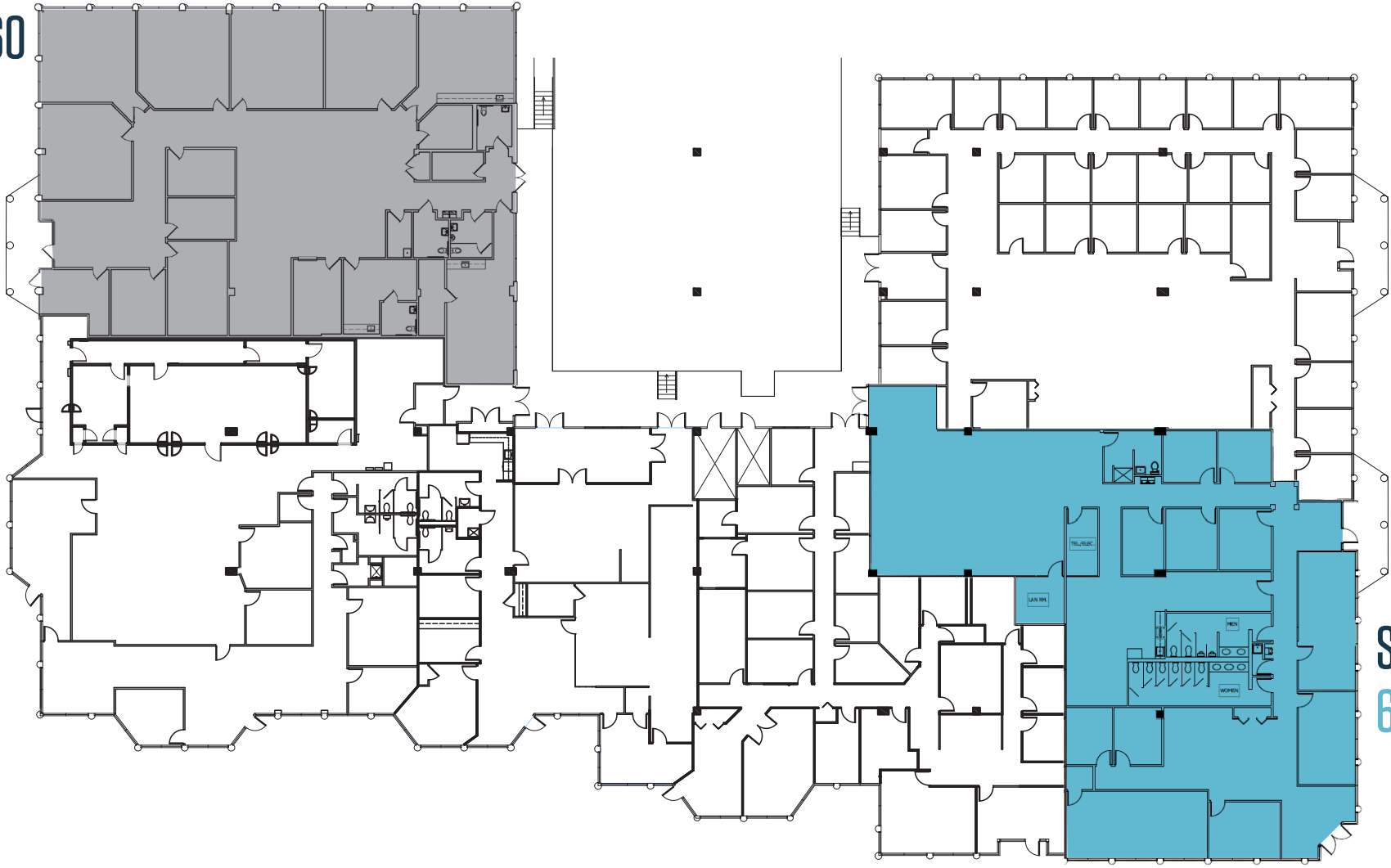
Founded in 2008, ESJ Capital Partners is a vertically-integrated owner, operator and developer of institutional quality office properties and education-focused real estate. ESJ's principals possess a combined 100+ years of experience and have completed over 11.3 million square feet of office transactions primarily located in the Southeastern United States.



SUITE 160

7,314 SF

Available
07/01/2025



SUITE 145
6,670 SF

FLOOR PLAN

klnb



WESTECH BUSINESS PARK - TALBOT

12120 Plum Orchard Dr, Silver Spring, MD 20904

CONTACT

KENNETH FELLOWS
kfellows@klnb.com
301-222-0210

ROBERT PUGH
rpugh@klnb.com
301-222-0211

KEIRY MARTINEZ
kmartinez@klnb.com
703-334-5629

12435 Park Potomac Ave, Suite 250,
Rockville, MD, 20854

klnb.com

VISIT PROPERTY WEBSITE

