



PROPERTY HIGHLIGHTS

- Year Built: 1988
- Building Height: 3 Stories
- Building Size: 55,422 SF
- Building Class: B
- Parking: 160 Surface

Tech Center 29 is located in eastern Montgomery County with easy access to I-95 and I-495. The property has excellent visibility from Route 29 with attractive landscaping and high window ratio. Constructed in 1988, the property sits on 12.95 acres and offers large floor sizes with compact core, large column spacing, 9 foot ceiling heights and 2 recessed, full height loading docks.

KENNETH FELLOWS

kfellows@klnb.com | 301-222-0210

ROBERT PUGH

rpugh@klnb.com | 301-222-0211

KEIRY MARTINEZ

kmartinez@klnb.com | 703-334-5629



WESTECH VILLAGE CORNER



Future 200,000 SF 390 Unit
Apartment and Multiple Two-Over-Twos
Est. Delivery: 2025

ORCHARD CENTER



WHITE OAK TOWN CENTER DEVELOPMENT



Oak Barrel & Vine Liquor Store



INSPIRE NAIL BAR & SPA

MONTGOMERY COLLEGE EAST EDUCATION CENTER

VIVA WHITE OAK DEVELOPMENT



Adventist HealthCare White Oak Medical Center

CLOSE-UP

TECH CENTER 29



KENNETH FELLOWS

kfellows@klnb.com | 301-222-0210

ROBERT PUGH

rpugh@klnb.com | 301-222-0211

KEIRY MARTINEZ

kmartinez@klnb.com | 703-334-5629



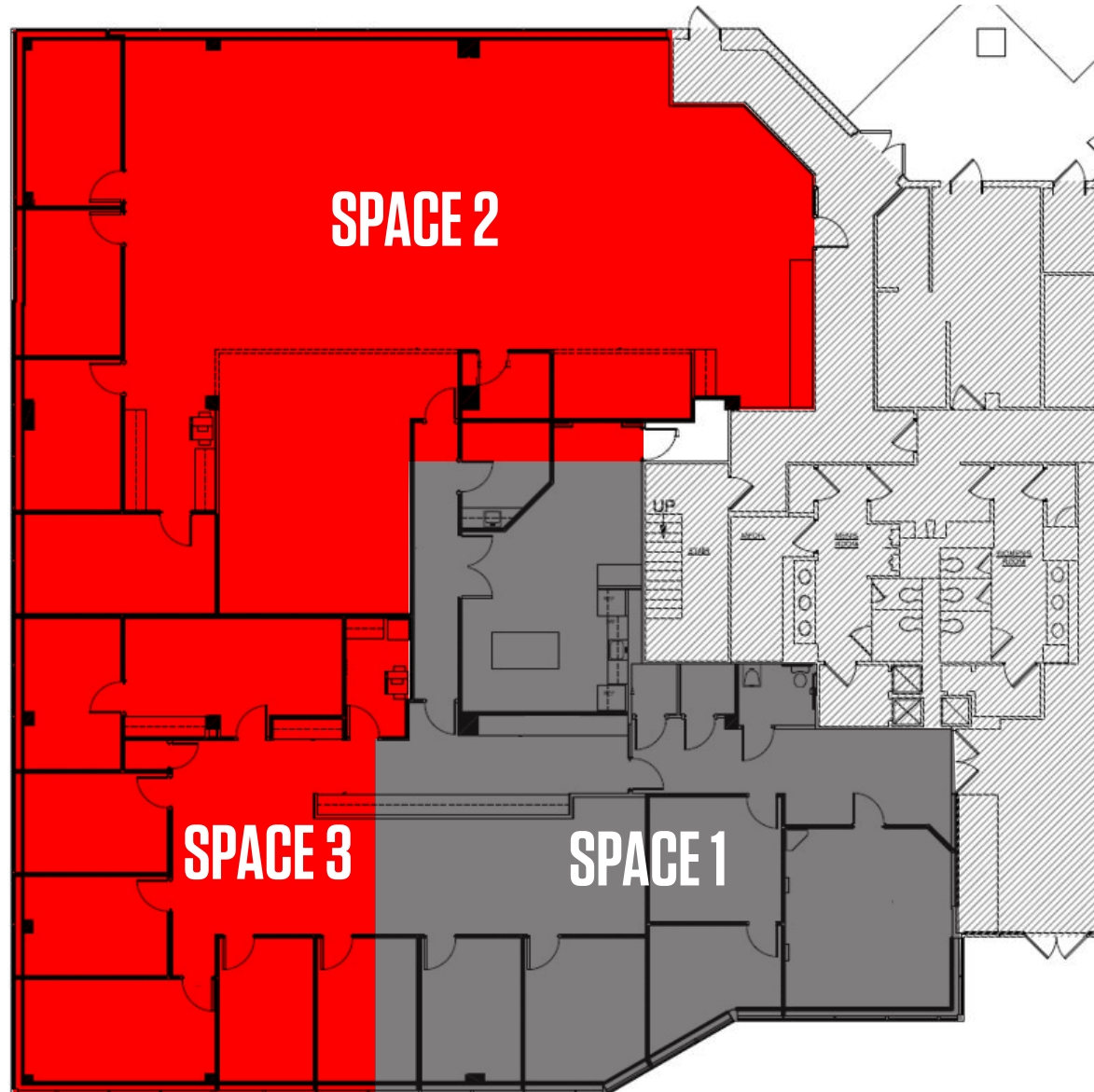
FLOOR PLAN

TECH CENTER 29

SPACE 1
2,518 SF

SPACE 2
4,490 SF

SPACE 3
1,560 SF



KENNETH FELLOWS

kfellows@klnb.com | 301-222-0210

ROBERT PUGH

rpugh@klnb.com | 301-222-0211

KEIRY MARTINEZ

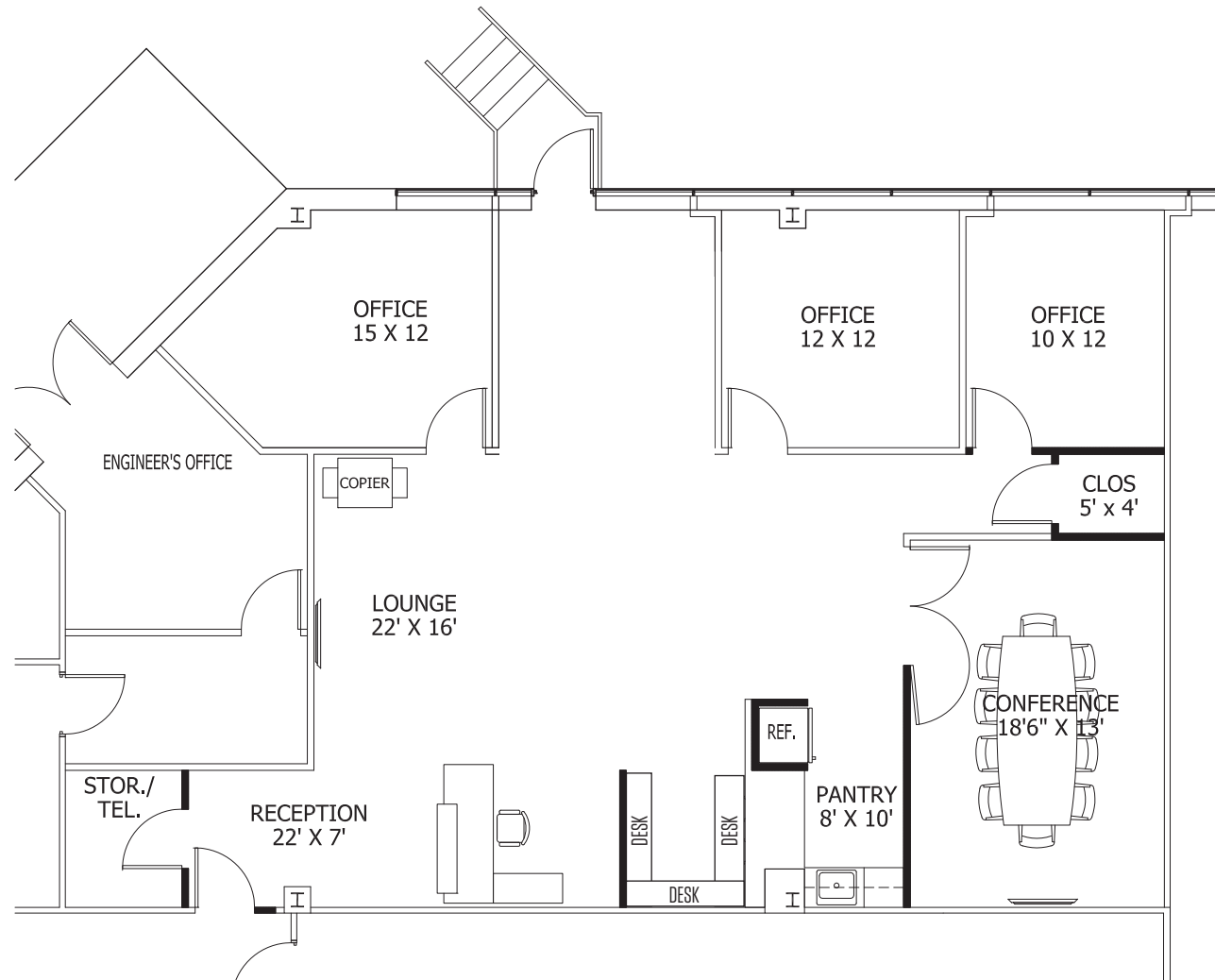
kmartinez@klnb.com | 703-334-5629



FLOOR PLAN

TECH CENTER 29

SUITE 120
2,020 SF



KENNETH FELLOWS

kfellows@klnb.com | 301-222-0210

ROBERT PUGH

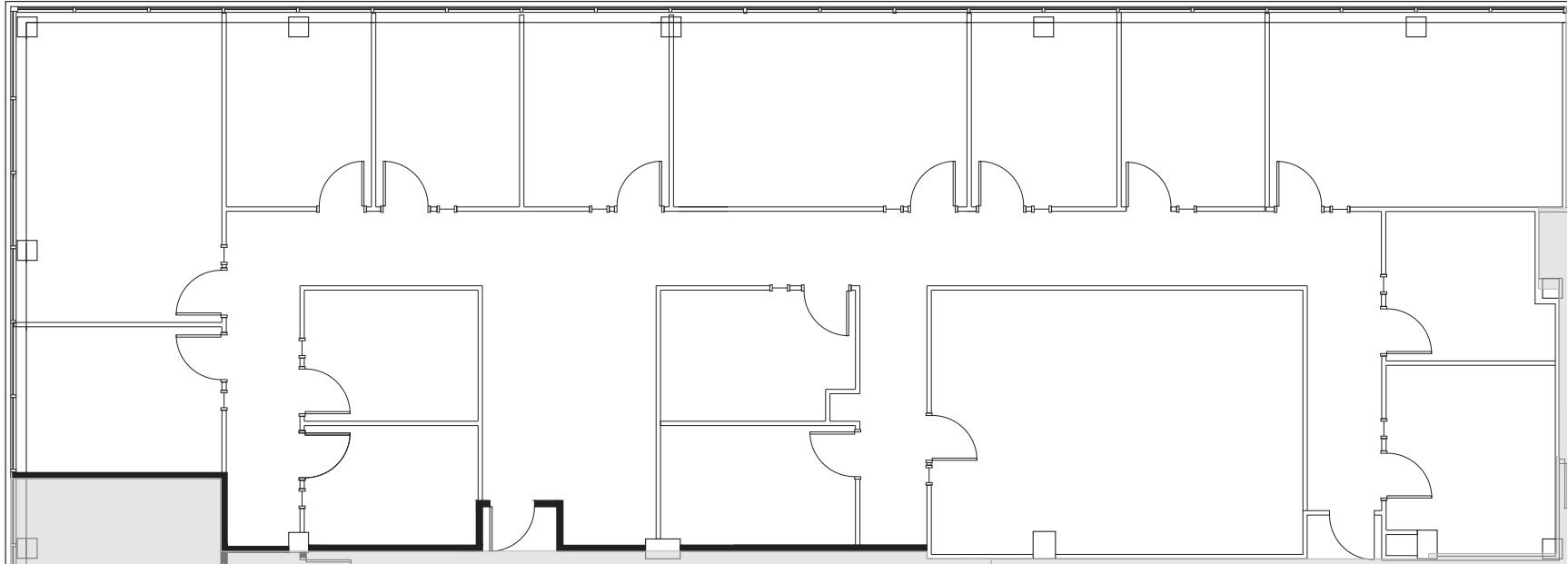
rpugh@klnb.com | 301-222-0211

KEIRY MARTINEZ

kmartinez@klnb.com | 703-334-5629



SUITE ON THE 2ND FLOOR 4,252 SF



KENNETH FELLOWS

kfellows@klnb.com | 301-222-0210

ROBERT PUGH

rpugh@klnb.com | 301-222-0211

KEIRY MARTINEZ

kmartinez@klnb.com | 703-334-5629

TECH CENTER 29



KENNETH FELLOWS

kfellows@klnb.com | 301-222-0210

ROBERT PUGH

rpugh@klnb.com | 301-222-0211

KEIRY MARTINEZ

kmartinez@klnb.com | 703-334-5629





TECH CENTER 29

FOR MORE INFORMATION, PLEASE CONTACT:

klnb.com

 facebook.com/KLNBCRE

 [@KLNBCRE](https://twitter.com/KLNBCRE)

 linkedin.com/company/klnb

 instagram.com/klnbcre

While we have no reason to doubt the accuracy of any of the information supplied, we cannot, and do not, guarantee its accuracy. All information should be independently verified prior to a purchase or lease of the property. We are not responsible for errors, omissions, misuse, or misinterpretation of information contained herein and make no warranty of any kind, express or implied, with respect to the property or any other matters.