



## WAREHOUSE FOR LEASE

Available October 1, 2024

- Three Docks
- 14' Clear
- Small Office Area
- \$15 NNN

## PROPERTY OVERVIEW

- Stories: 2
- Docks: 4 ext
- Drive Ins: 4 tot./ 10'w x 12'h
- Building Height: 35'
- Year Built: 1981
- Parking: 25 Free Surface Spaces Ratio of 1.25/ 1,000 SF
- Construction: Reinforced Concrete

**KENNETH FELLOWS**

kfellows@klnb.com | 301-222-0210

**ROBERT PUGH**

rpugh@klnb.com | 301-222-0211

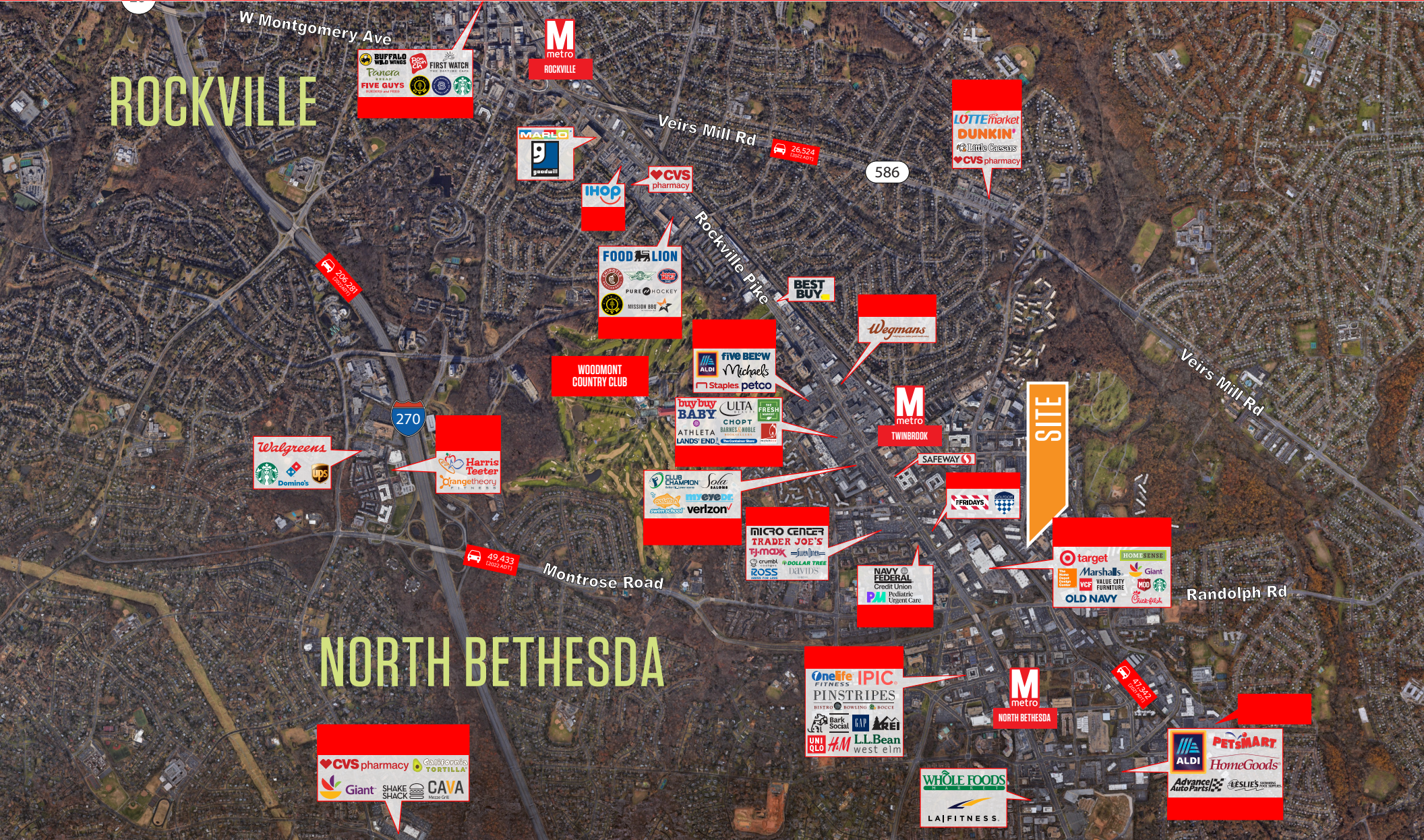
**KEIRY MARTINEZ**

kmartinez@klnb.com | 703-334-5629



# MARKET

# 12300 CARROLL AVE



**KENNETH FELLOWS**

kfellows@klnb.com | 301-222-0210

**ROBERT PUGH**

rpugh@klnb.com | 301-222-0211

**KEIRY MARTINEZ**

kmartinez@klnb.com | 703-334-5629





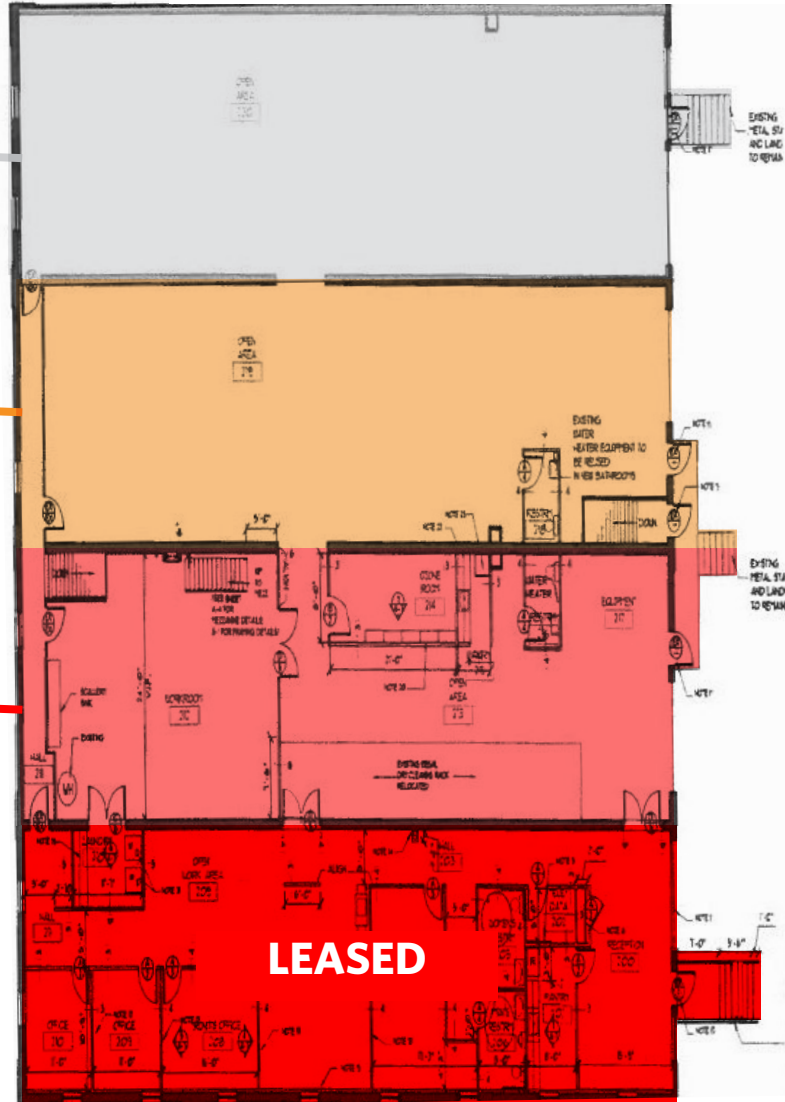
# FLOOR PLAN

# 12300 CARROLL AVE

**BAY 4**  
**2,750 SF**

**BAY 3**  
**2,750 SF**

**BAY 2**  
**2,750 SF**



**KENNETH FELLOWS**

kfellows@klnb.com | 301-222-0210

**ROBERT PUGH**

rpugh@klnb.com | 301-222-0211

**KEIRY MARTINEZ**

kmartinez@klnb.com | 703-334-5629





# 12300 CARROLL AVE

**FOR MORE INFORMATION, PLEASE CONTACT:**

**klnb.com**

 [facebook.com/KLNBCRE](https://facebook.com/KLNBCRE)

 [@KLNBCRE](https://twitter.com/KLNBCRE)

 [linkedin.com/company/klnb](https://linkedin.com/company/klnb)

 [instagram.com/klnbcre](https://instagram.com/klnbcre)

**CLICK TO VIEW PROPERTY WEBSITE**

While we have no reason to doubt the accuracy of any of the information supplied, we cannot, and do not, guarantee its accuracy. All information should be independently verified prior to a purchase or lease of the property. We are not responsible for errors, omissions, misuse, or misinterpretation of information contained herein and make no warranty of any kind, express or implied, with respect to the property or any other matters.