

8801 SNOUFFERS SCHOOL RD

8801 Snouffers School Rd,
Gaithersburg, MD



4.5 ACRES OF INDUSTRIAL LAND FOR SALE

- Asking price is \$1.5 million

KENNETH E. FELLOWS
kfellows@klnb.com
301-222-0210

ROBERT PUGH
rpugh@klnb.com
301-222-0211

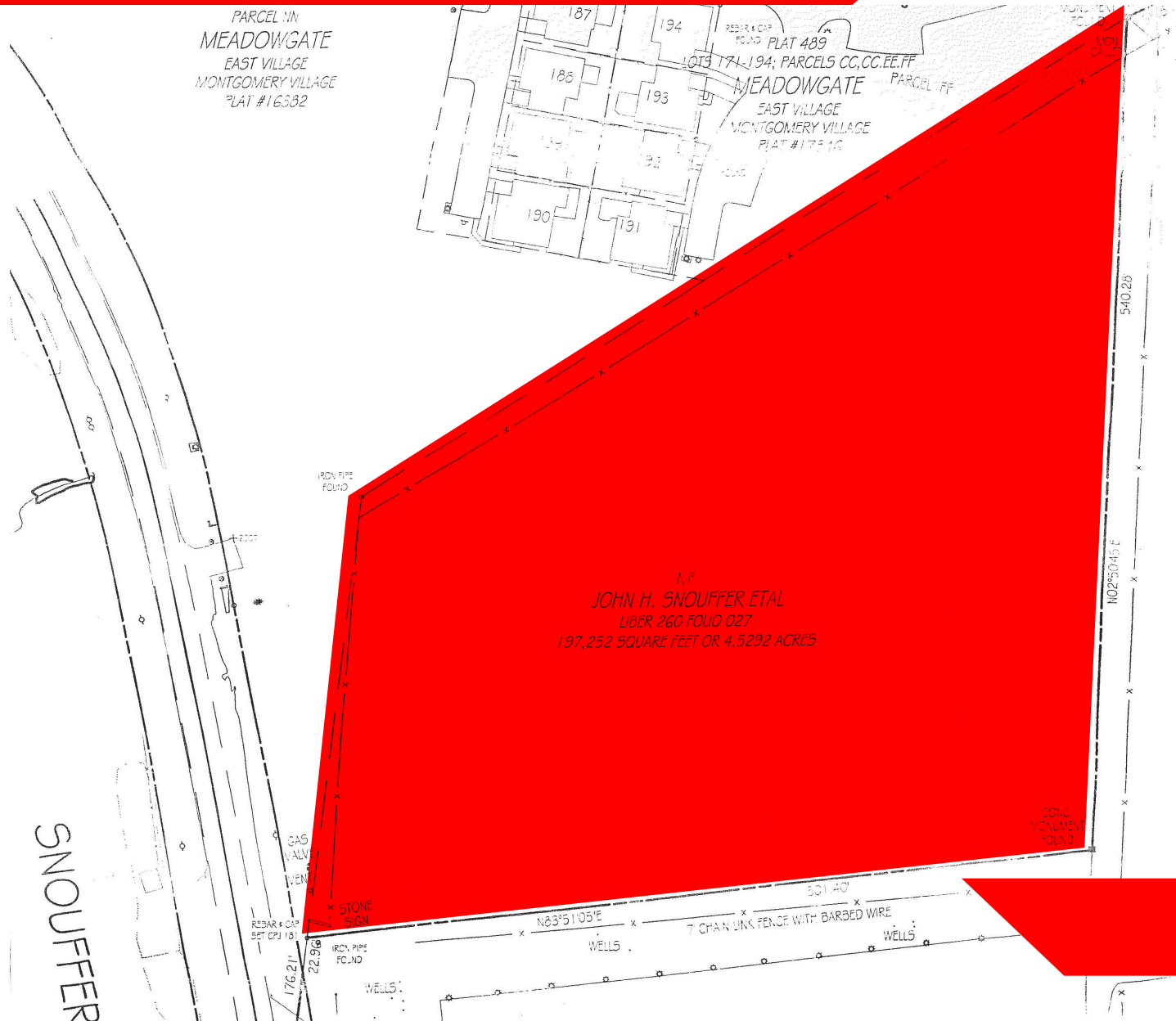
KEIRY MARTINEZ
kmartinez@klnb.com
703-334-5629

2273 Research Blvd, Suite 150
Rockville, MD 20850
klnb.com



8801 SNOUFFERS SCHOOL RD

8801 Snouffers School Rd,
Gaithersburg, MD



SITE PLAN

KENNETH E. FELLOWS
kfellows@klnb.com
301-222-0210

ROBERT PUGH
rpugh@klnb.com
301-222-0211

KEIRY MARTINEZ
kmartinez@klnb.com
703-334-5629

2273 Research Blvd, Suite 150
Rockville, MD 20850
klnb.com



8801 SNOUFFERS SCHOOL RD

8801 Snouffers School Rd,
Gaithersburg, MD

CLICK TO VIEW PROPERTY WEBSITE

For More Information, Please Contact:

KENNETH E. FELLOWS
kfellows@klnb.com
301-222-0210

ROBERT PUGH
rpugh@klnb.com
301-222-0211

KEIRY MARTINEZ
kmartinez@klnb.com
703-334-5629

12435 Park Potomac Ave, Suite 250, Rockville, MD, 20854

[instagram.com/klnbcre](https://www.instagram.com/klnbcre)

[linkedin.com/company/klnb](https://www.linkedin.com/company/klnb)

[facebook.com/KLNBCRE](https://www.facebook.com/KLNBCRE)

While we have no reason to doubt the accuracy of any of the information supplied, we cannot, and do not, guarantee its accuracy. All information should be independently verified prior to a purchase or lease of the property. We are not responsible for errors, omissions, misuse, or misinterpretation of information contained herein and make no warranty of any kind, express or implied, with respect to the property or any other matters.

The logo for KLNb, featuring the lowercase letters 'klnb' in a bold, sans-serif font. The 'k' and 'l' are connected, and the 'n' and 'b' are also connected. The letters are a dark blue color.