



JOIN THESE RETAILERS



RETAIL FOR LEASE

- New retail development located at W. 28th and Sisson Street
- North and Southbound access to I-83
- Multiple layout options
- Rare surface parking

MICHAEL GINSBURG

mginsburg@klnb.com | 443-632-2041

BRIAN FINKELSTEIN

bfinkelstein@klnb.com | 443-632-2076

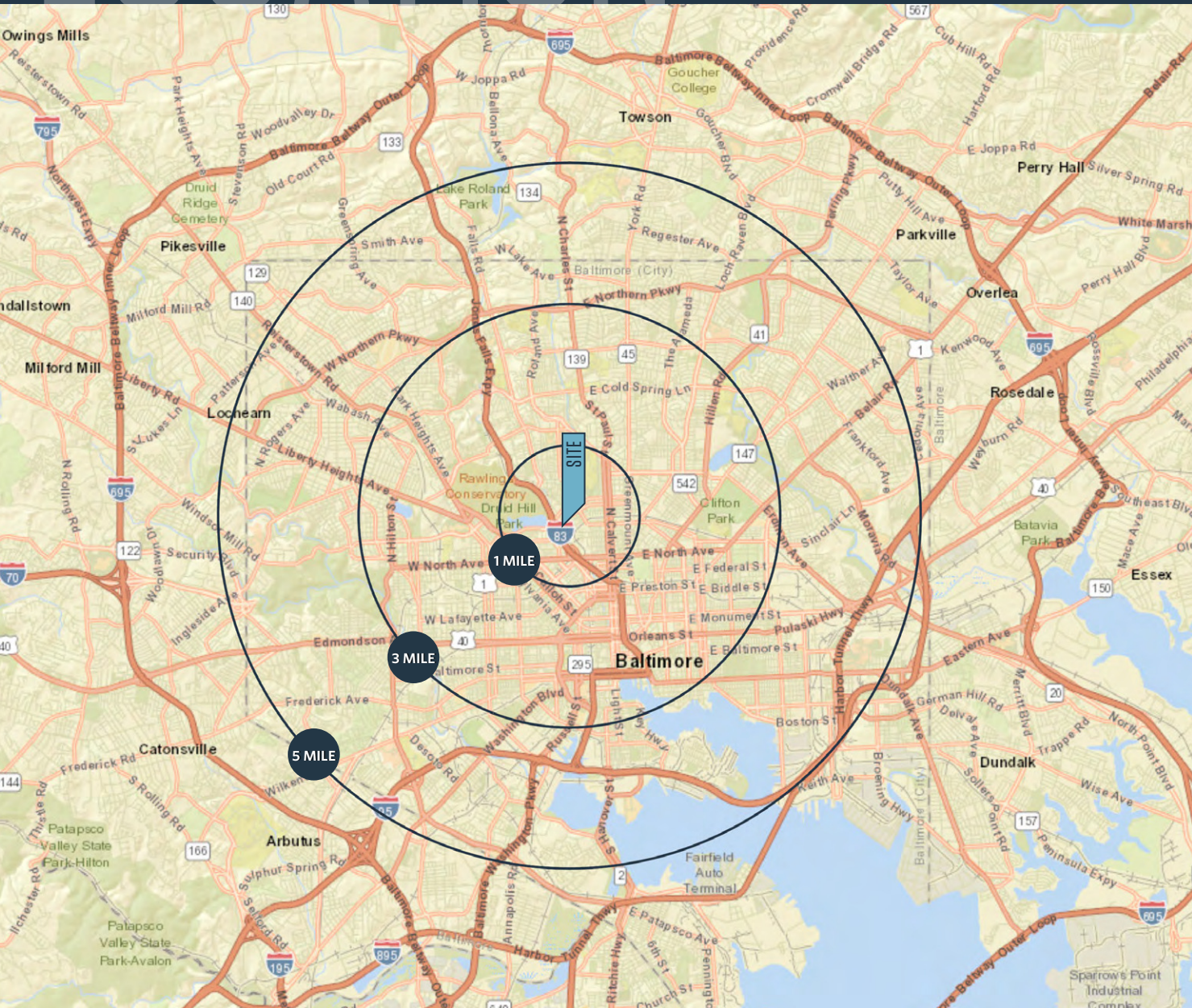
MATT COPELAND

mcopeland@klnb.com | 443-632-2051

LOCATION

REMINGTON STATION

2890 SISSON STREET, BALTIMORE, MD 21211, BALTIMORE COUNTY



AVAILABLE SPACE:

Up to 20,000 SF ±

DEMOGRAPHICS | 2024:

1-MILE	3-MILE	5-MILE
Population		
36,828	265,045	558,967
Daytime Population		
39,875	374,274	657,901
Households		
17,575	119,440	245,379
Average HH Income		
\$93,407	\$85,925	\$97,202

[CLICK TO DOWNLOAD DEMOGRAPHIC REPORT](#)

TRAFFIC COUNTS | 2023:

Sisson Street	3,555 ADT
W 28th Street	10,912 ADT
W 29th Street	12,490 ADT

MICHAEL GINSBURG

mginsburg@klnb.com | 443-632-2041

BRIAN FINKELSTEIN

bfinkelstein@klnb.com | 443-632-2076

MATT COPELAND

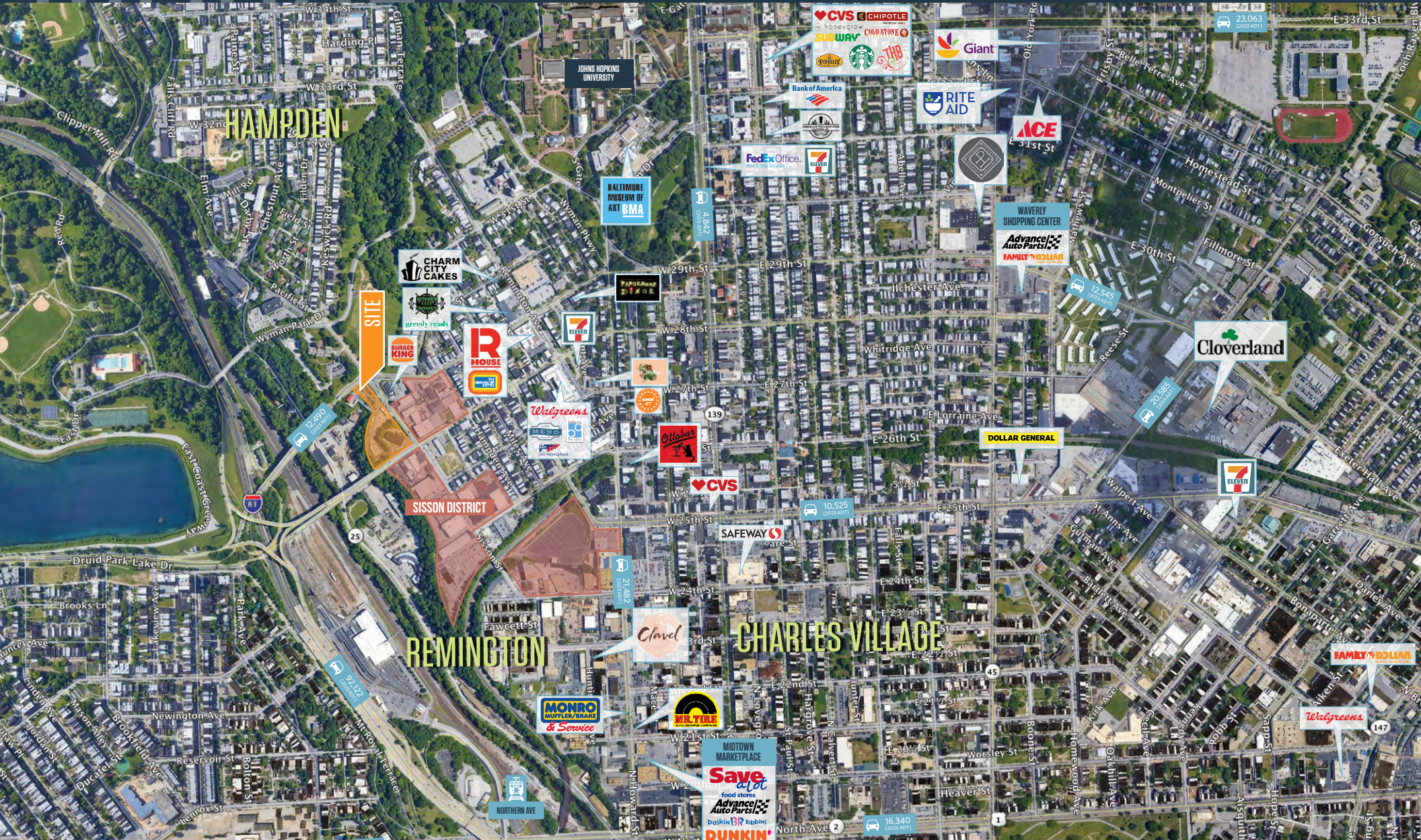
mcopeland@klnb.com | 443-632-2051



MARKET

REMINGTON STATION

2890 SISSON STREET, BALTIMORE, MD 21211, BALTIMORE COUNTY



MICHAEL GINSBURG

mginzburg@klnb.com | 443-632-2041

BRIAN FINKELSTEIN

bfinkelstein@klnb.com | 443-632-2076

MATT COPELAND

mcopeland@klnb.com | 443-632-2051



CLOSE-UP

REMINGTON STATION

2890 SISSON STREET, BALTIMORE, MD 21211, BALTIMORE COUNTY

OPTION 1



MICHAEL GINSBURG

mginsburg@klnb.com | 443-632-2041

BRIAN FINKELSTEIN

bfinkelstein@klnb.com | 443-632-2076

MATT COPELAND

mcopeland@klnb.com | 443-632-2051



CLOSE-UP

REMINGTON STATION

2890 SISSON STREET, BALTIMORE, MD 21211, BALTIMORE COUNTY

OPTION 2



MICHAEL GINSBURG

mginsburg@klnb.com | 443-632-2041

BRIAN FINKELSTEIN

bfinkelstein@klnb.com | 443-632-2076

MATT COPELAND

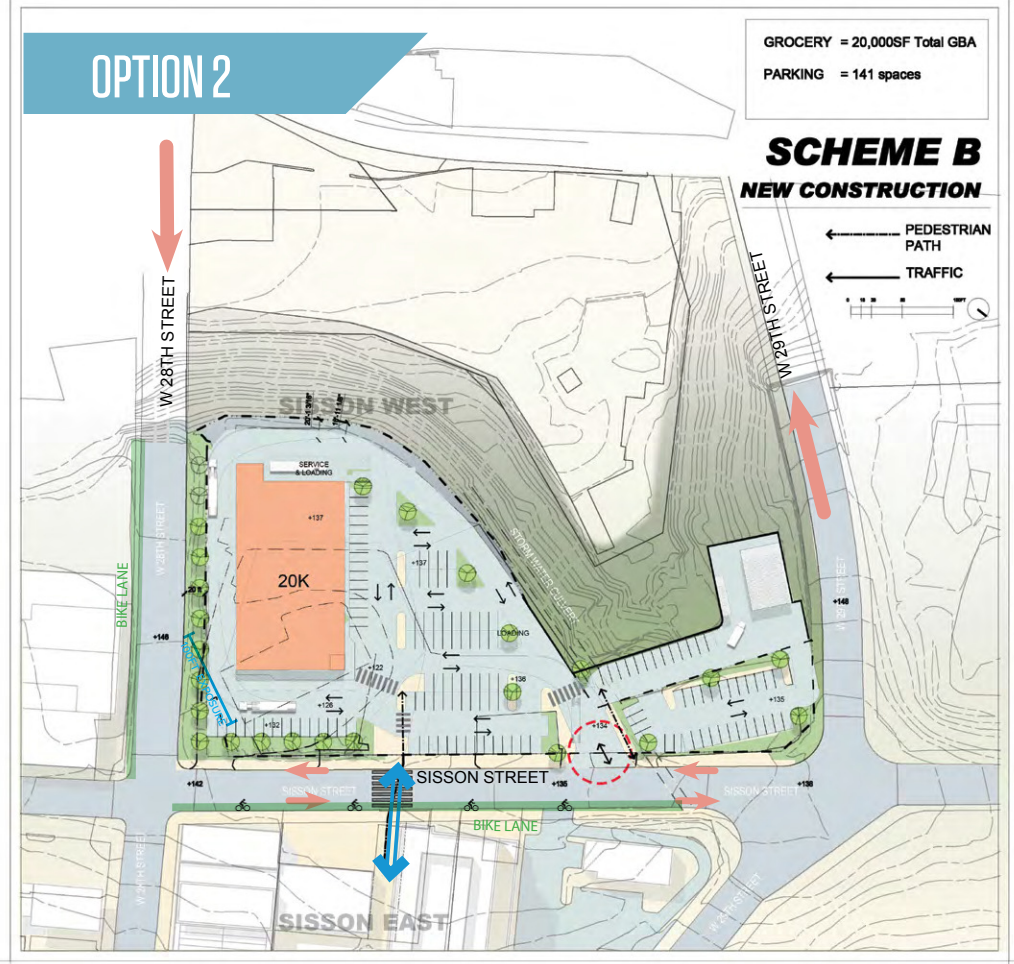
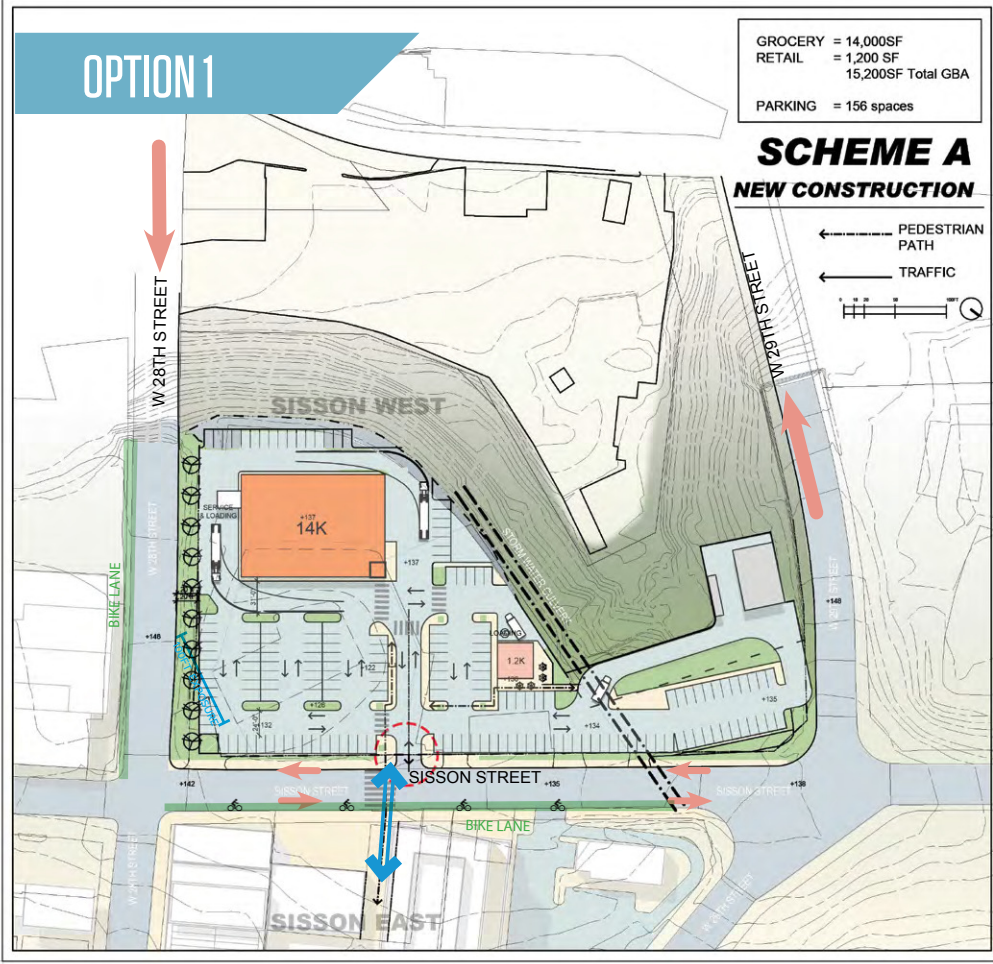
mcopeland@klnb.com | 443-632-2051

klnb

SITE PLAN

REMINGTON STATION

2890 SISSON STREET, BALTIMORE, MD 21211, BALTIMORE COUNTY



MICHAEL GINSBURG

mginsburg@klnb.com | 443-632-2041

BRIAN FINKELSTEIN

bfinkelstein@klnb.com | 443-632-2076

MATT COPELAND

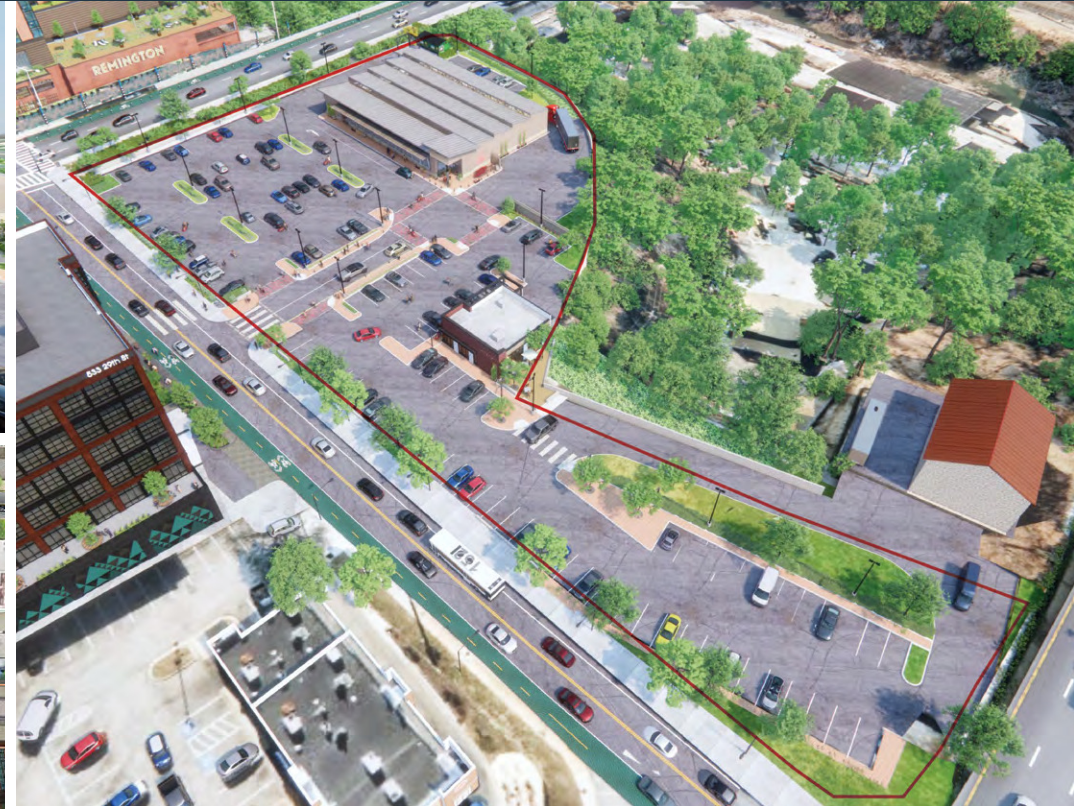
mcopeland@klnb.com | 443-632-2051



RENDERINGS

REMINGTON STATION

2890 SISSON STREET, BALTIMORE, MD 21211, BALTIMORE COUNTY



MICHAEL GINSBURG

mginzburg@klnb.com | 443-632-2041

BRIAN FINKELSTEIN

bfinkelstein@klnb.com | 443-632-2076

MATT COPELAND

mcopeland@klnb.com | 443-632-2051





REMINGTON STATION

2890 SISSON STREET, BALTIMORE, MD 21211, BALTIMORE COUNTY

FOR MORE INFORMATION, PLEASE CONTACT:

MICHAEL GINSBURG

mginsburg@klnb.com

443-632-2041

BRIAN FINKELSTEIN

bfinkelstein@klnb.com

443-632-2076

MATT COPELAND

mcopeland@klnb.com

443-632-2051

100 West Road, Suite 505, Towson, MD 21204

.....
klnb.com



[instagram.com/klnbcre](https://www.instagram.com/klnbcre)



[linkedin.com/company/klnb](https://www.linkedin.com/company/klnb)



[facebook.com/KLNBCRE](https://www.facebook.com/KLNBCRE)

CLICK TO VIEW PROPERTY WEBSITE

While we have no reason to doubt the accuracy of any of the information supplied, we cannot, and do not, guarantee its accuracy. All information should be independently verified prior to a purchase or lease of the property. We are not responsible for errors, omissions, misuse, or misinterpretation of information contained herein and make no warranty of any kind, express or implied, with respect to the property or any other matters.