

# RUMSEY BUSINESS CENTER

9130 Red Branch Road & 9150, 9151, 9160, 9180 Rumsey Road  
Columbia, MD 21045 | Howard County



## FOR LEASE

## AVAILABILITIES

### ► 9151 Rumsey Road

» Suite 100-1: 8,410 SF Office

- Conveniently located near Downtown Columbia
- Easy access to I-95, Route 29, and Route 32
- Minutes away from Columbia Mall, Howard Community College, Howard County General Hospital, Fort Meade & BWI Airport
- 10' x 12' at-grade drive-ins; Wet sprinkler
- Zoning: M1-NT
- Ceiling Heights: 14' x 16'
- Columns: 30'-33'w x 42'd
- Ample parking

## NEARBY AMENITIES



Spence Daw  
sdaw@klnb.com  
443-574-1429

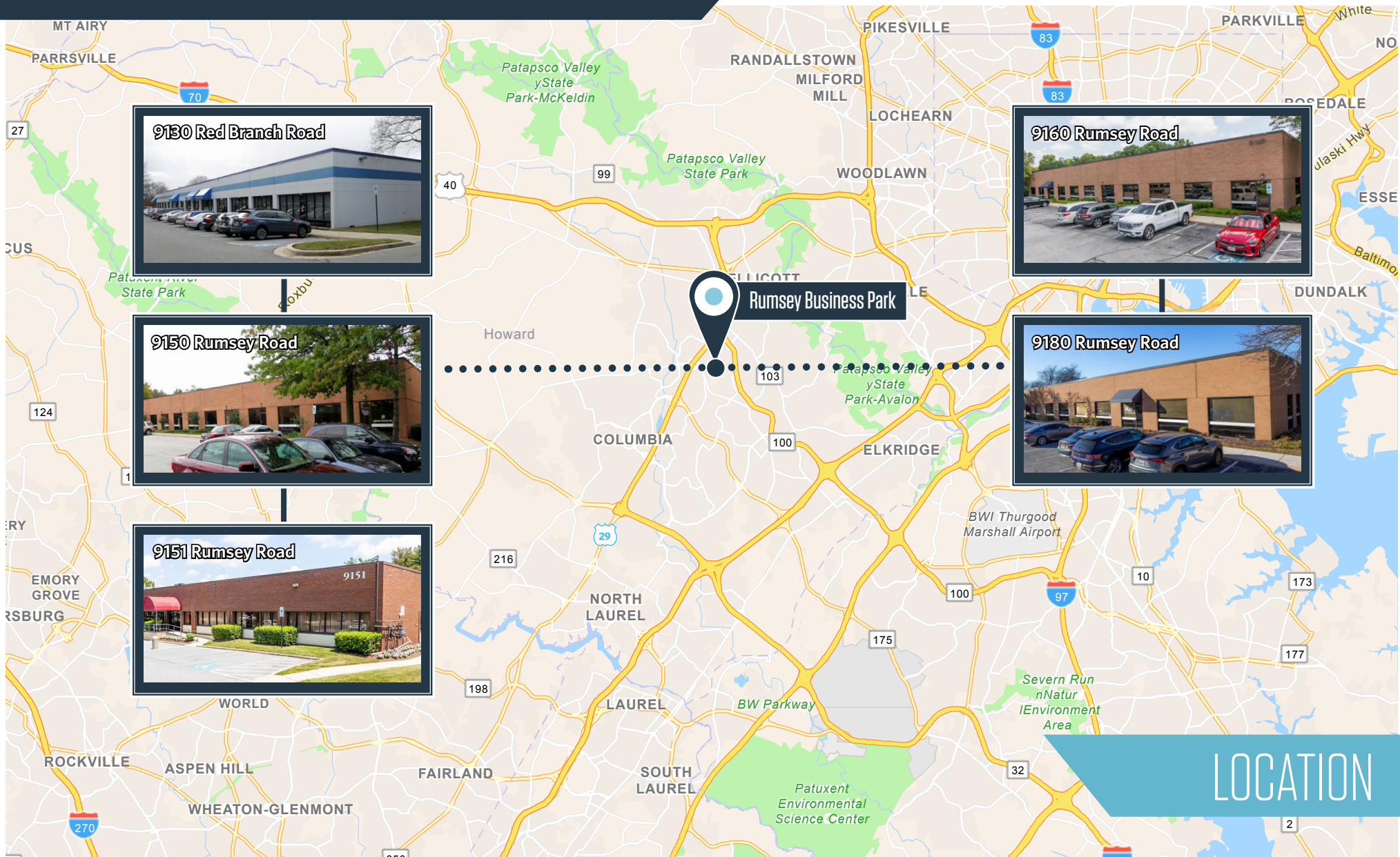
David J. Fritz, CCIM, SIOR  
dfritz@klnb.com  
443-574-14120

9881 Broken Land Pkwy, #300  
Columbia, MD 21043  
klnb.com



# RUMSEY BUSINESS CENTER

9130 Red Branch Road & 9150, 9151, 9160, 9180 Rumsey Road  
Columbia, MD 21045 | Howard County



## LOCATION

Spence Daw  
sdaw@klnb.com  
443-574-1429

David J. Fritz, CCIM, SIOR  
dfritz@klnb.com  
443-574-14120

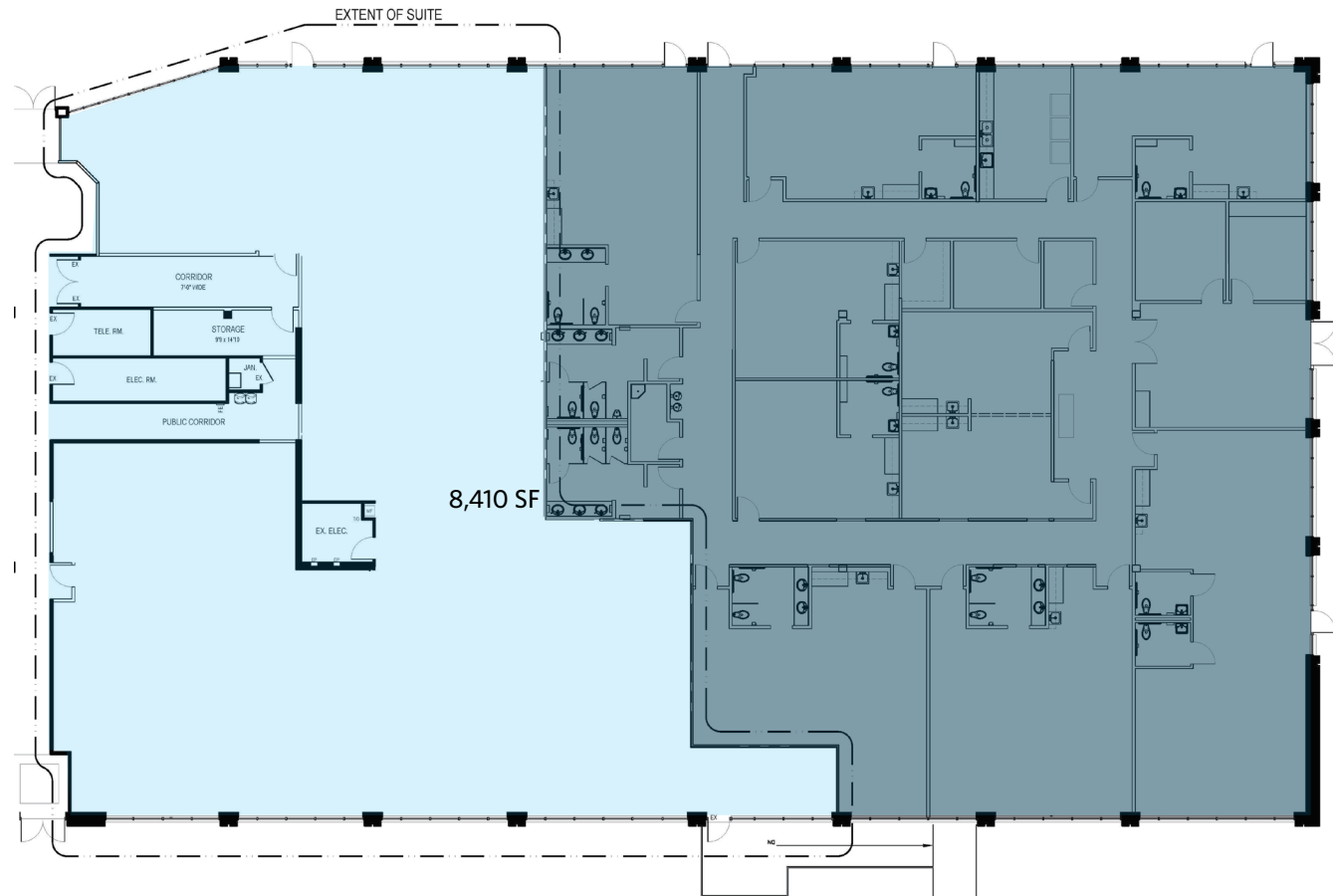
9881 Broken Land Pkwy, #300  
Columbia, MD 21043  
klnb.com



# RUMSEY BUSINESS CENTER

9130 Red Branch Road & 9150, 9151, 9160, 9180 Rumsey Road  
Columbia, MD 21045 | Howard County

9151 Rumsey Road  
SUITE 100-1  
8,410 SF



Spence Daw  
sdaw@klnb.com  
443-574-1429

David J. Fritz, CCIM, SIOR  
dfritz@klnb.com  
443-574-14120

9881 Broken Land Pkwy, #300  
Columbia, MD 21043  
klnb.com



# RUMSEY BUSINESS CENTER

9130 Red Branch Road & 9150, 9151, 9160, 9180 Rumsey Road  
Columbia, MD 21045 | Howard County



Spence Daw  
sdaw@klnb.com  
443-574-1429

David J. Fritz, CCIM, SIOR  
dfritz@klnb.com  
443-574-14120

9881 Broken Land Pkwy, #300  
Columbia, MD 21043  
klnb.com



# RUMSEY BUSINESS CENTER

9130 Red Branch Road & 9150, 9151, 9160, 9180 Rumsey Road  
Columbia, MD 21045 | Howard County

CLICK TO VIEW PROPERTY WEBSITE

For More Information, Please Contact:

**Spence Daw**

sdaw@klnb.com  
443-574-1429

**David J. Fritz, CCIM, SIOR**

dfritz@klnb.com  
443-574-1410

9881 Broken Land Parkway, Suite 300  
Columbia, MD 21046

[klnb.com](http://klnb.com)



[instagram.com/klnbcre](https://www.instagram.com/klnbcre)



[linkedin.com/company/klnb](https://www.linkedin.com/company/klnb)



[facebook.com/KLNBcre](https://www.facebook.com/KLNBcre)

While we have no reason to doubt the accuracy of any of the information supplied, we cannot, and do not, guarantee its accuracy. All information should be independently verified prior to a purchase or lease of the property. We are not responsible for errors, omissions, misuse, or misinterpretation of information contained herein and make no warranty of any kind, express or implied, with respect to the property or any other matters.

