



CLICK HERE TO WATCH
A VIRTUAL TOUR



SUITE 105
2,311 SF
AVAILABLE



NEARBY RETAILERS



RETAIL FOR LEASE

- The Clark is a mixed-use building with 342 apartments and 5,000 SF of retail.
 - Just minutes away and sandwiched between Amazon's HQ2, Virginia Tech's Innovation Campus, and Reagan National Airport.
 - 1,845 residential units, 440,000 SF of office space and Crystal City Potomac Yard Transitway stop within walking distance.
 - Located in the middle of National Landing, a mixed use development of 5,000 housing units, 3 million SF of office, retail and hotels.
- Easy and abundant indoor parking.
 - 188 parking spaces for retail and meeting house.
 - Next door to Lidl headquarters.

CRAIG S. CHENEY

ccheney@klnb.com | 703-268-2705

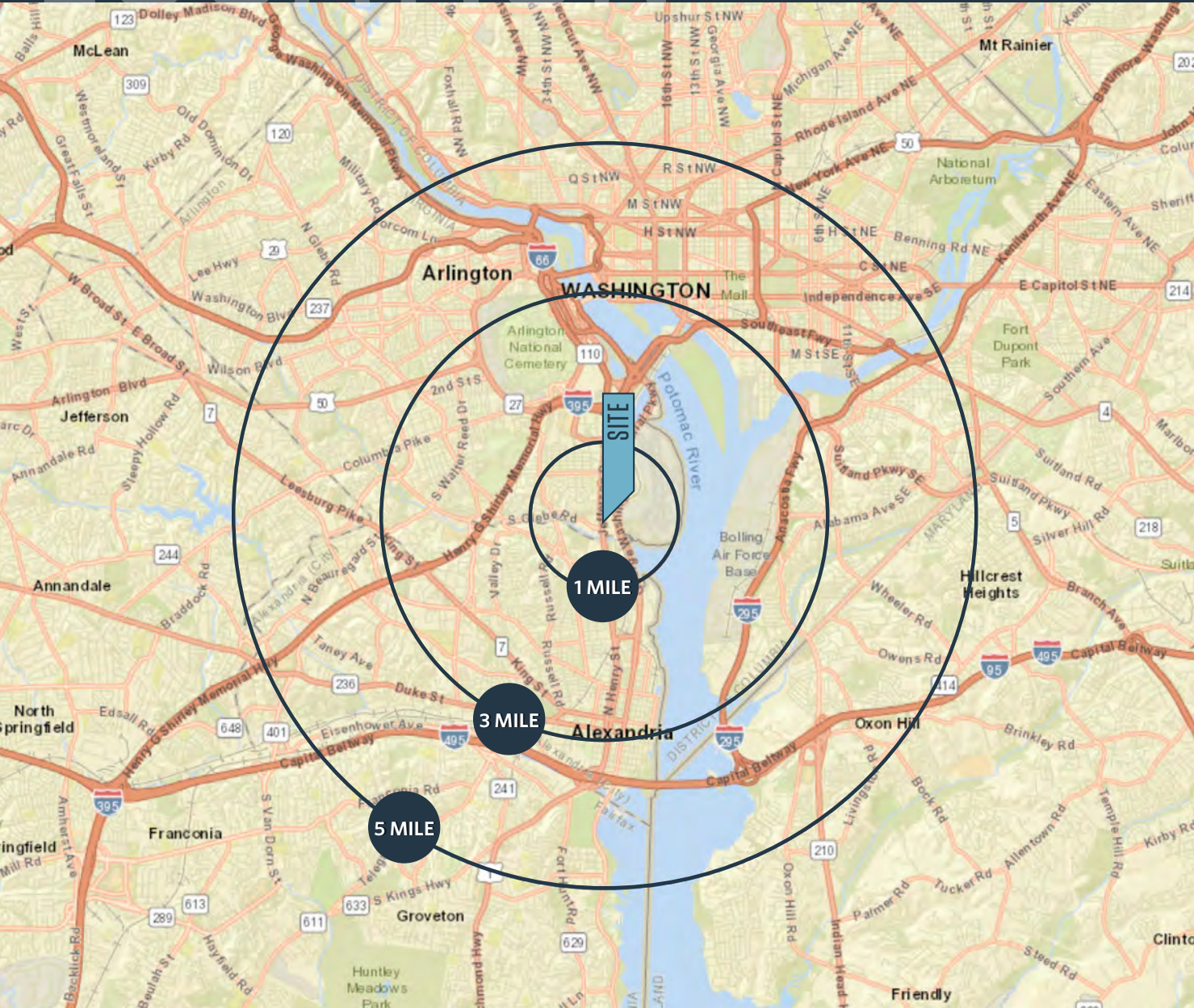
ALEX WILLNER

awillner@klnb.com | 703-268-2718

LOCATION

THE CLARK AT NATIONAL LANDING

3400 S CLARK STREET, ARLINGTON, VA 22202, ARLINGTON COUNTY



AVAILABLE SPACE:

SUITE	SIZE	RATE	CONDITION	CEILING HT	DELIVERY
SUITE 105	2,311 SF	\$45.00 PSF NNN	COLD DARK SHELL	10' clear	IMMEDIATE

*NNN are estimated to be \$15.58 PSF

DEMOGRAPHICS | 2024:

	1-MILE	3-MILE	5-MILE
Population	28,343	196,784	721,129
Daytime Population	43,247	240,215	1,188,608
Households	13,483	95,720	344,241
Average HH Income	\$158,881	\$171,100	\$164,475

[CLICK TO DOWNLOAD DEMOGRAPHIC REPORT](#)

TRAFFIC COUNTS | 2023:

Route 1	37,212 ADT
S Glebe Road	22,012 ADT

CRAIG S. CHENEY

ccheney@klnb.com | 703-268-2705

ALEX WILLNER

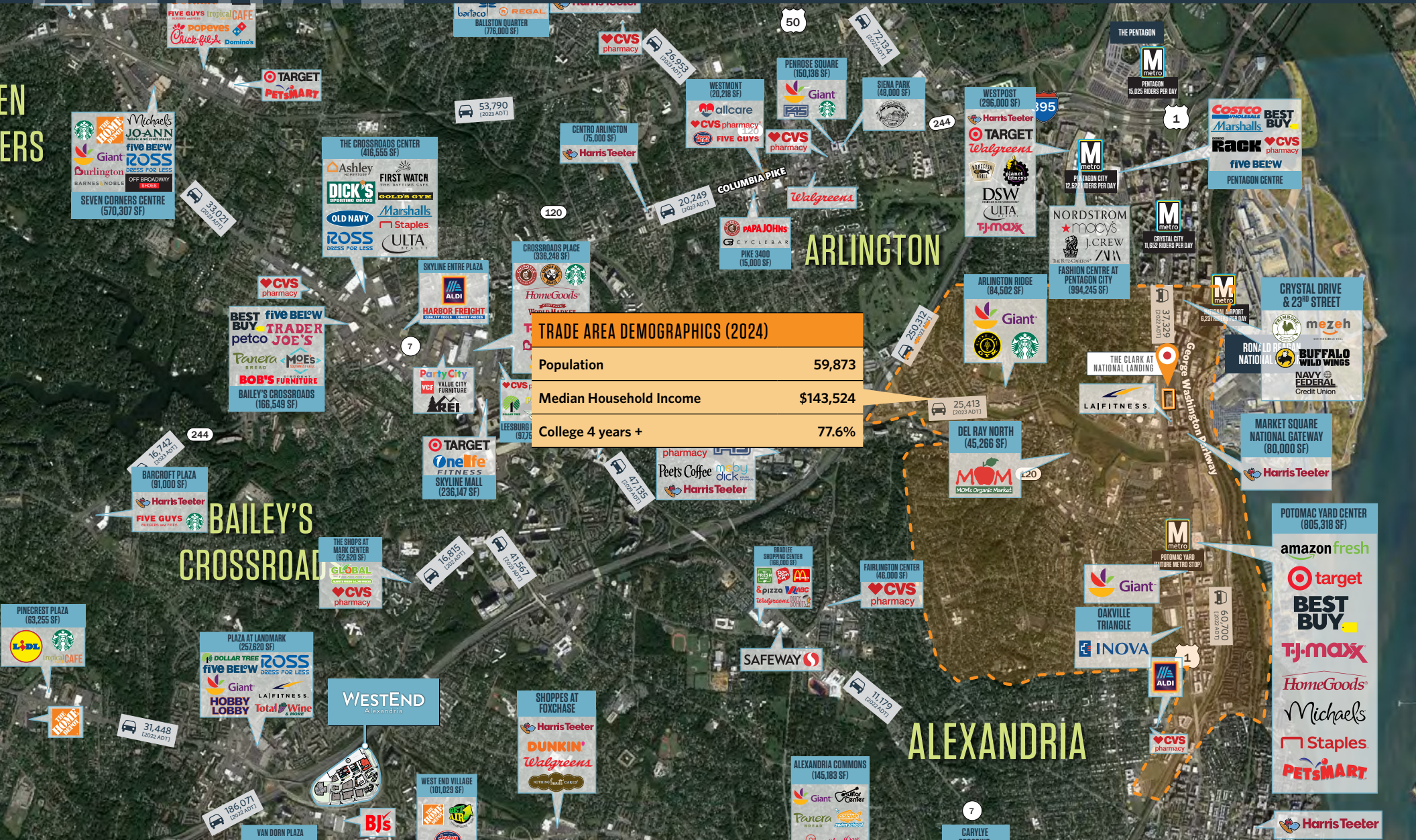
awillner@klnb.com | 703-268-2718



AERIAL

THE CLARK AT NATIONAL LANDING

3400 S CLARK STREET, ARLINGTON, VA 22202, ARLINGTON COUNTY



CRAIG S. CHENEY
 ccheney@klnb.com | 703-268-2705

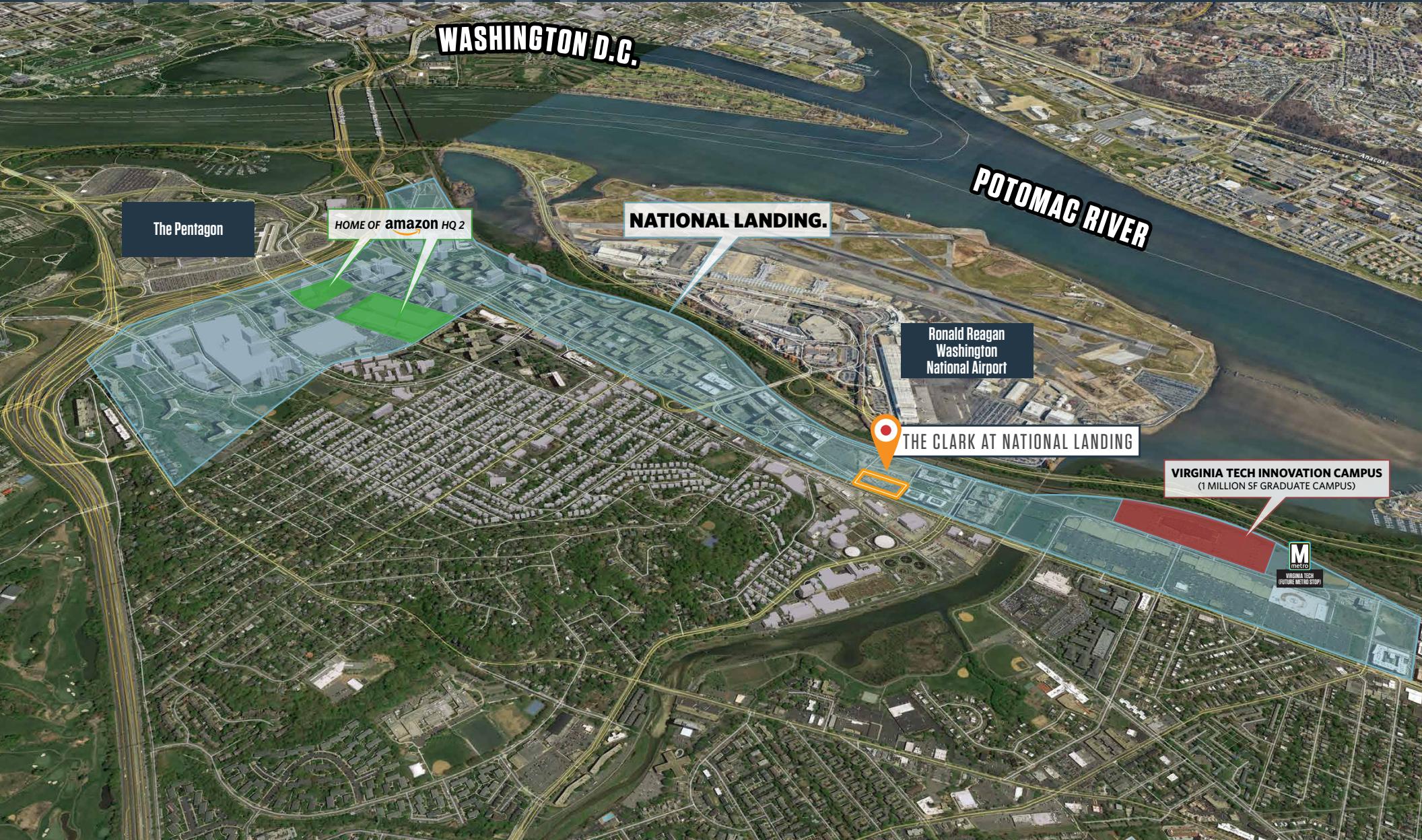
ALEX WILLNER
 awillner@klnb.com | 703-268-2718



OVERVIEW

THE CLARK AT NATIONAL LANDING

3400 S CLARK STREET, ARLINGTON, VA 22202, ARLINGTON COUNTY



CRAIG S. CHENEY

ccheney@klnb.com | 703-268-2705

ALEX WILLNER

awillner@klnb.com | 703-268-2718





PURCHASED (BUILDINGS TO BE BUILT)

- 1 PenPlace (2M SF)
- 2 Metropolitan Park (2M SF)

LEASED (500,000 SF EXISTING BUILDINGS)

- 3 241 18th Street
- 4 1750 Crystal Drive
- 5 1800 S Bell Street



395

1

THE BARLETT
WHOLE FOODS MARKET

1

M metro
PENTAGON CITY

2

M metro
CRYSTAL CITY

3

4

5

George Washington Memorial Pkwy



NORDSTROM
macy's
J.CREW
ZARA
THE RITZ-CARLTON
FASHION CENTRE AT
PENTAGON CITY

COSTCO WHOLESALE
Marshall's
BEST BUY
Rack
CVS pharmacy
five BELOW
PENTAGON CENTRE

Chick-fil-A
COLD STONE CREAMERY

CVS pharmacy

23rd Street

Crystal Drive

mezeh
BUFFALO WILD WINGS
NAVY FEDERAL Credit Union
CRYSTAL DRIVE & 23RD STREET

1

THE CLARK AT NATIONAL LANDING

MARKET SQUARE NATIONAL LANDING
Harris Teeter
INOVA

FOUR MILE RUN

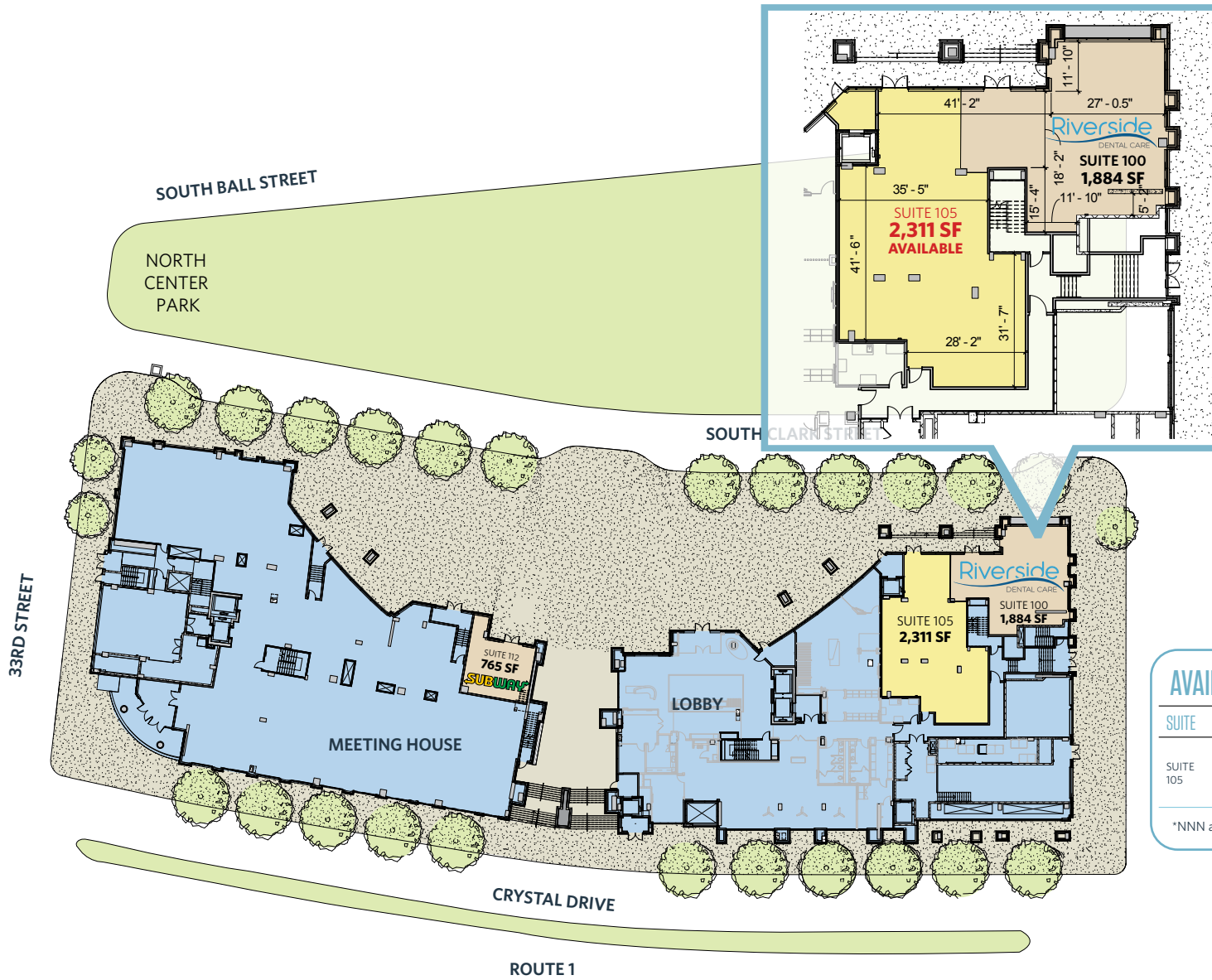
POTOMAC YARD
amazon fresh
target
TJ-maxx
HomeGoods
PETS MART
BEST BUY
Michaels
Staples



SITE PLAN

THE CLARK AT NATIONAL LANDING

3400 S CLARK STREET, ARLINGTON, VA 22202, ARLINGTON COUNTY



AVAILABLE SPACE:

SUITE	SIZE	RATE	CONDITION	CEILING HT	DELIVERY
SUITE 105	2,311 SF	\$45.00 PSF NNN	COLD DARK SHELL	10' clear	IMMEDIATE

*NNN are estimated to be \$15.58 PSF

CRAIG S. CHENEY
 ccheney@klnb.com | 703-268-2705

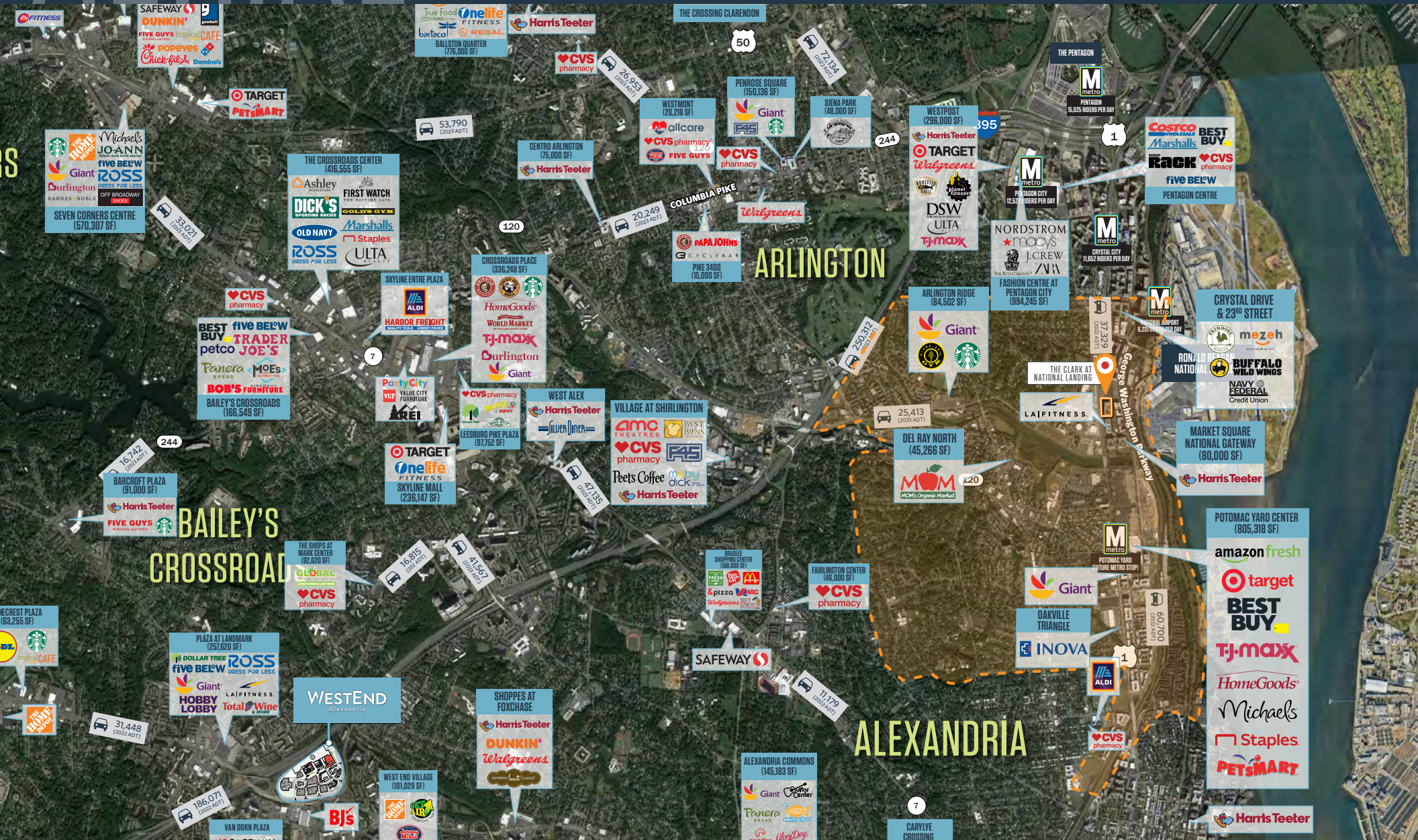
ALEX WILLNER
 awillner@klnb.com | 703-268-2718



AERIAL

THE CLARK AT NATIONAL LANDING

3400 S CLARK STREET, ARLINGTON, VA 22202, ARLINGTON COUNTY



CRAIG S. CHENEY
ccheney@klnb.com | 703-268-2705

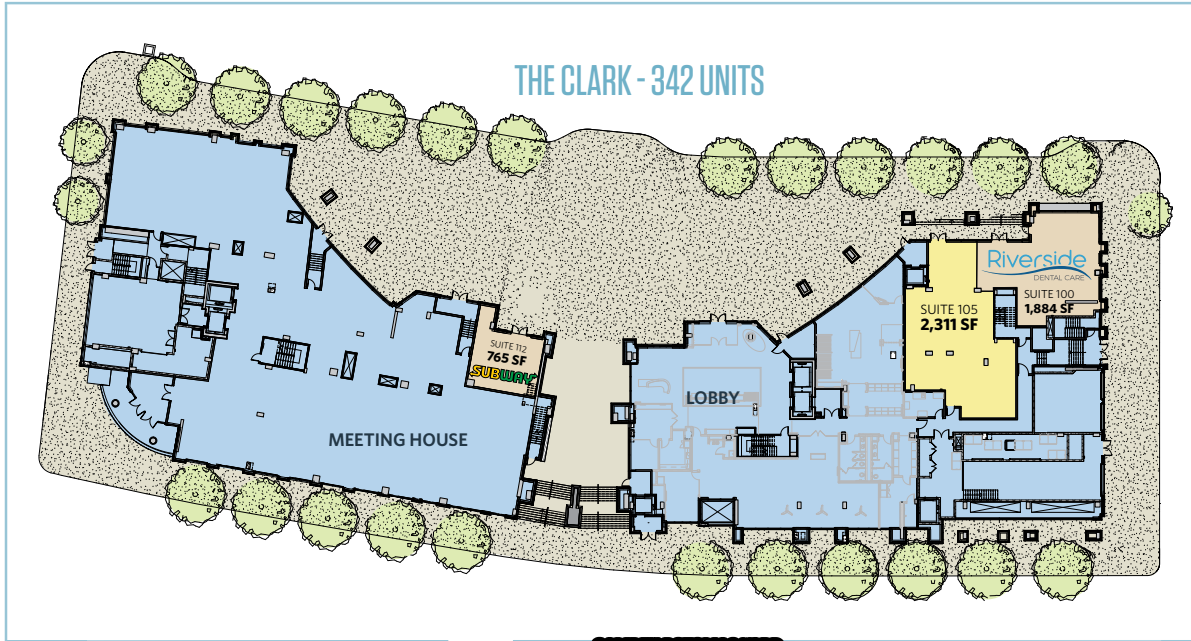
ALEX WILLNER
awillner@klnb.com | 703-268-2718



OVERVIEW

THE CLARK AT NATIONAL LANDING

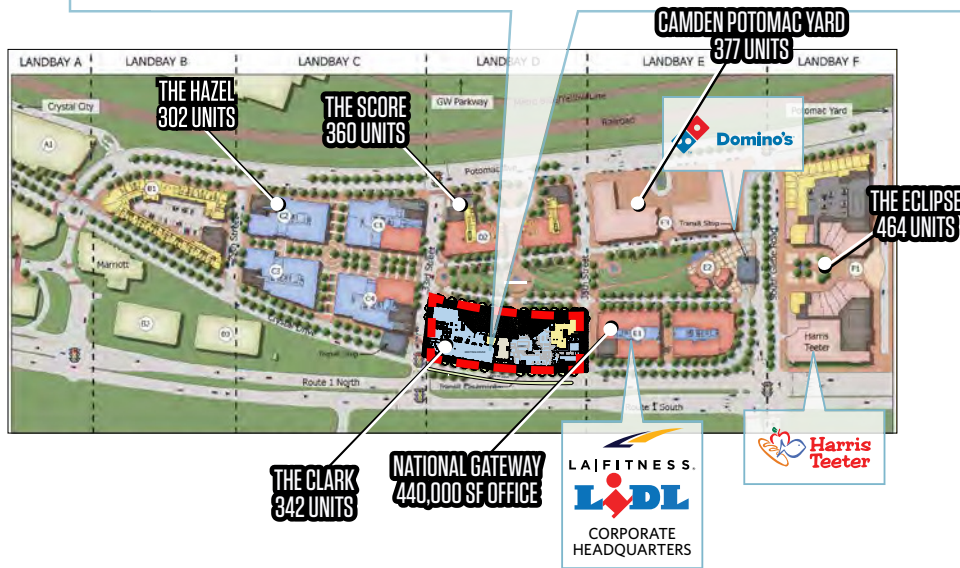
3400 S CLARK STREET, ARLINGTON, VA 22202, ARLINGTON COUNTY



AVAILABLE SPACE:

SUITE	SIZE	RATE	CONDITION	CEILING HT	DELIVERY
SUITE 105	2,311 SF	\$45.00 PSF NNN	COLD DARK SHELL	10' clear	IMMEDIATE

*NNN are estimated to be \$15.58 PSF



CRAIG S. CHENEY
 ccheney@klnb.com | 703-268-2705

ALEX WILLNER
 awillner@klnb.com | 703-268-2718





THE CLARK AT NATIONAL LANDING

3400 S CLARK STREET, ARLINGTON, VA 22202, ARLINGTON COUNTY

FOR MORE INFORMATION, PLEASE CONTACT:

CRAIG S. CHENEY

ccheney@klnb.com

703-268-2705

ALEX WILLNER

awillner@klnb.com

703-268-2718

8065 Leesburg Pike, Suite 700, Tysons, VA 22182

.....

klnb.com

f facebook.com/KLNB

in linkedin.com/company/klnb

@ instagram.com/klnbcre

CLICK TO VIEW PROPERTY WEBSITE

While we have no reason to doubt the accuracy of any of the information supplied, we cannot, and do not, guarantee its accuracy. All information should be independently verified prior to a purchase or lease of the property. We are not responsible for errors, omissions, misuse, or misinterpretation of information contained herein and make no warranty of any kind, express or implied, with respect to the property or any other matters.