



Excellent Visibility and Access from Route 15
North and South Bound

NEARBY RETAILERS



DUNKIN'



SUBWAY

DOLLAR GENERAL

LAND FOR SALE OR LEASE

- 3.6 Acres zoned B2
- Located near Washington, DC and Baltimore metro areas
- Part of Frederick County, which has seen major economic growth in recent years
- Direct Visibility from Route 15

BO GALLES

bgalles@kl**nb**.com | 703-268-2712

PHIL RUXTON

pruxton@kl**nb**.com | 202-420-7777

BOB BROWNING

bbrowning@kl**nb**.com | 703-268-2717

Emmitsburg
Frederick County | Maryland

kl**nb**

- Google Earth Pro -
2018 Aerial Photograph
While we have no reason to doubt the accuracy of
any of the information supplied, we cannot,
and do not, guarantee its accuracy.

HOUSING KEY

1 UNIT
COMPLETED
8 APPROVED
UNITS
NAME OF
PROJECT

PENNSYLVANIA
MARYLAND

140

143
145
BROOKFIELD

0
48
EMMIT RIDGE 2

Wajnesboro Pike

Rube's Crab Shack

N Seton Ave

15

Sleep
INTL

MASON DIXON
WELCOME CENTER

SUBWAY

Jubilee

DUNKIN'

McDonald's

Harney Rd

W Main St

DOLLAR GENERAL

PNC

EMMITSBURG
ELEMENTARY SCHOOL

E Main St

MOTHER SETON
SCHOOL

UNITED STATES
POSTAL SERVICE

Pizza
Hut

33
46
SOUTHGATE

Replogh's

10201 TANEYTOWN PIKE

Rutter's
Who Go Anywhere Else?

FEMA EMERGENCY
MANAGEMENT INSTITUTE

Catoctin Mountain Hwy

15

140

Taneytown Pike

BO GALLES

bgalles@kl**nb**.com | 703-268-2712

PHIL RUXTON

pruxton@kl**nb**.com | 202-420-7777

BOB BROWNING

bbrowning@kl**nb**.com | 703-268-2717

kl**nb**

OVERVIEW

10201 TANEYTOWN PIKE



Excellent Visability and Access from Route 15
North and South Bound

BO GALLES

bgalles@klnb.com | 703-268-2712

PHIL RUXTON

pruxton@klnb.com | 202-420-7777

BOB BROWNING

bbrowning@klnb.com | 703-268-2717



OVERVIEW

10201 TANEYTOWN PIKE



BO GALLES

bgalles@klnb.com | 703-268-2712

PHIL RUXTON

pruxton@klnb.com | 202-420-7777

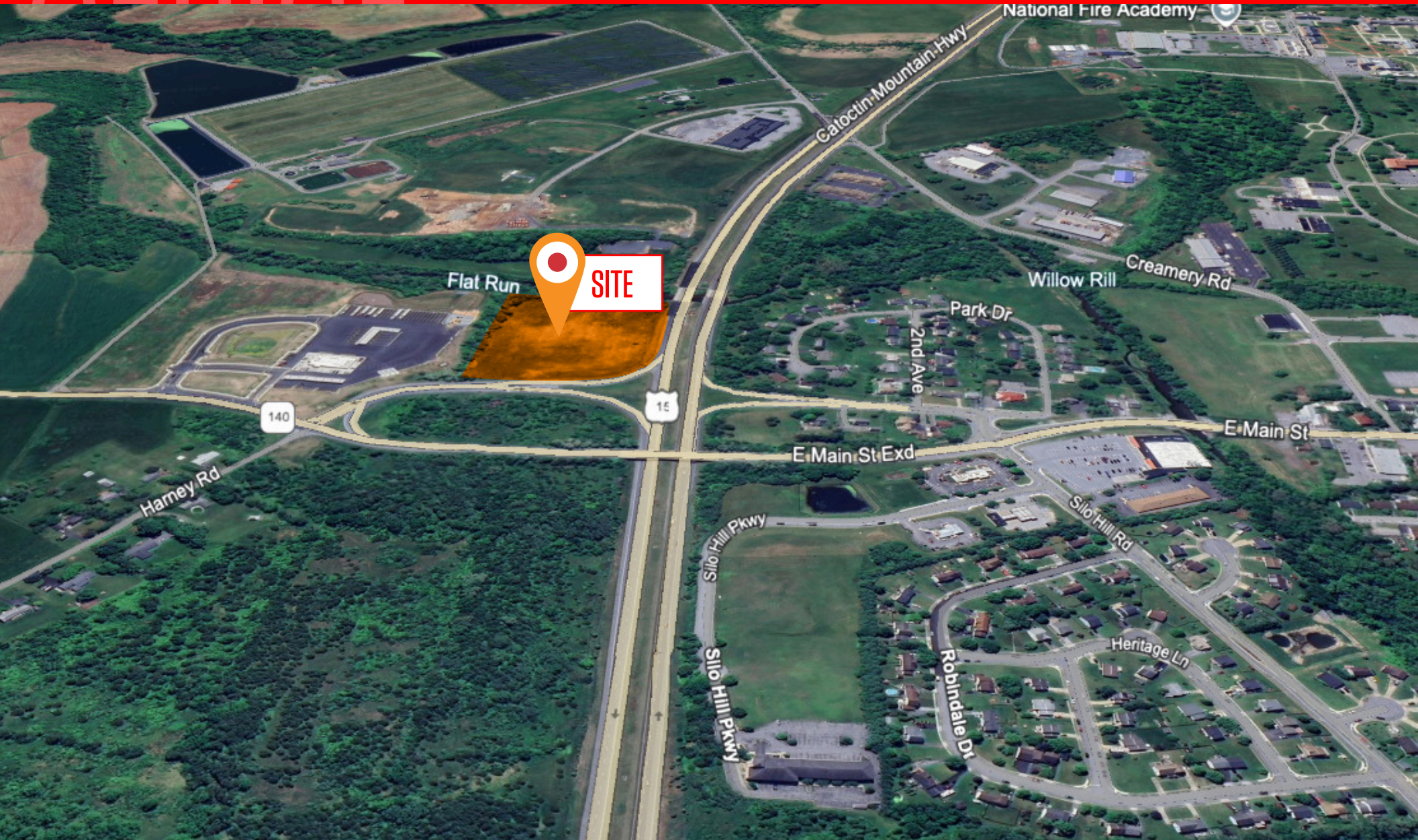
BOB BROWNING

bbrowning@klnb.com | 703-268-2717



AERIAL

10201 TANEYTOWN PIKE



BO GALLES

bgalles@klnb.com | 703-268-2712

PHIL RUXTON

pruxton@klnb.com | 202-420-7777

BOB BROWNING

bbrowning@klnb.com | 703-268-2717



SOUTH

10201 TANEYTOWN PIKE



© 2025 Google

BO GALLES

bgalles@klnb.com | 703-268-2712

PHIL RUXTON

pruxton@klnb.com | 202-420-7777

BOB BROWNING

bbrowning@klnb.com | 703-268-2717



NORTH

10201 TANEYTOWN PIKE



BO GALLES

bgalles@klnb.com | 703-268-2712

PHIL RUXTON

pruxton@klnb.com | 202-420-7777

BOB BROWNING

bbrowning@klnb.com | 703-268-2717



OVERVIEW

10201 TANEYTOWN PIKE



BO GALLES

bgalles@klnb.com | 703-268-2712

PHIL RUXTON

pruxton@klnb.com | 202-420-7777

BOB BROWNING

bbrowning@klnb.com | 703-268-2717





Placer.ai
RUTTERS



10.6K
VISITS PER YEAR



4.4K
UNIQUE VISITORS PER YEAR



2.41
VISIT FREQUENCY

DATA IS FROM APRIL 1, 2023 - MARCH 31, 2024



BO GALLES

bgalles@klnb.com | 703-268-2712

PHIL RUXTON

pruxton@klnb.com | 202-420-7777

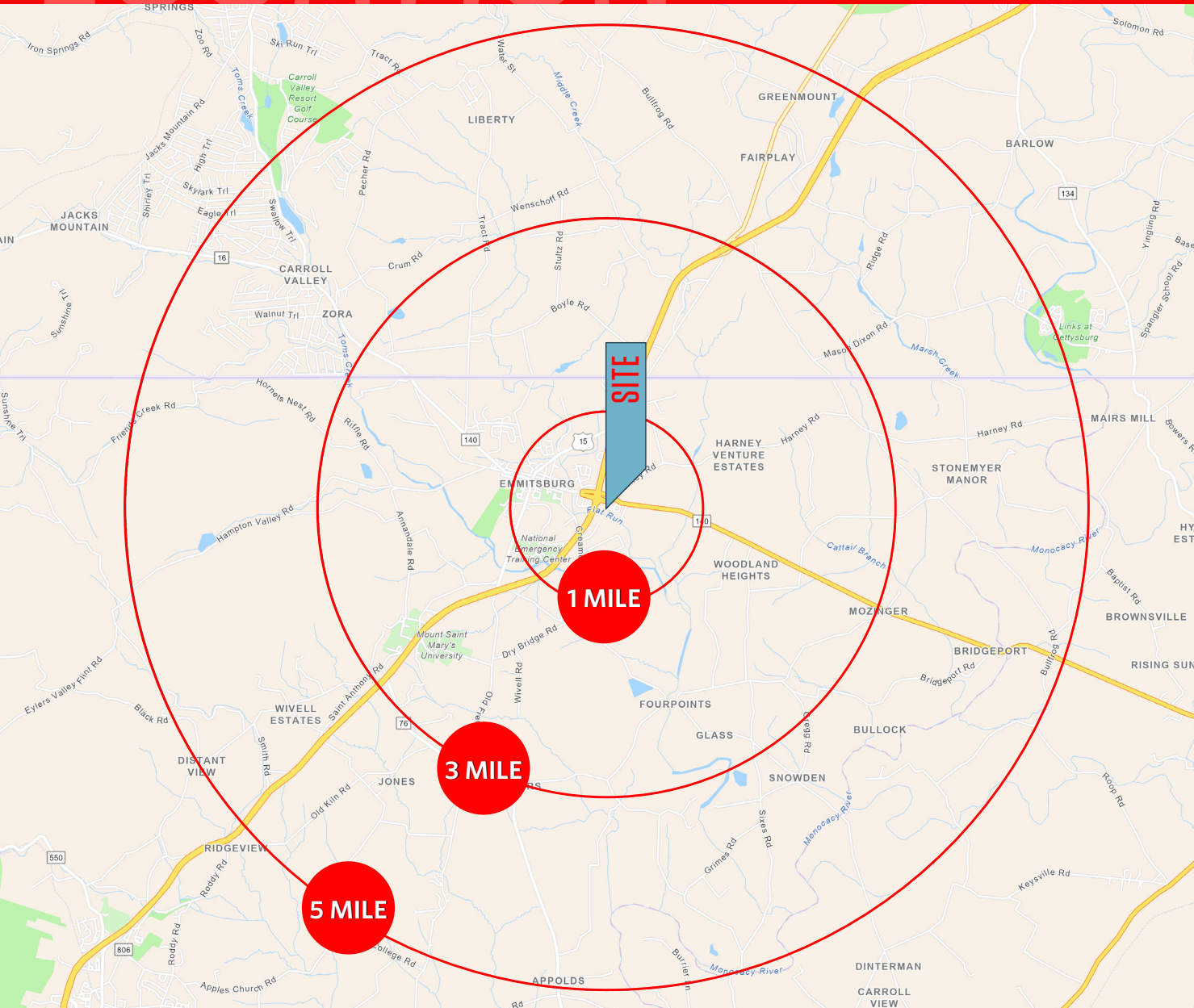
BOB BROWNING

bbrowning@klnb.com | 703-268-2717



LOCATION

10201 TANEYTOWN PIKE



DEMOGRAPHICS | 2023:

1-MILE	3-MILE	5-MILE
Population		
1,800	6,504	11,338
Daytime Population		
1,529	2,379	4,227
Households		
674	1,724	3,652
Average HH Income		
\$89,636	\$105,801	\$113,748

[CLICK TO DOWNLOAD DEMOGRAPHIC REPORT](#)

TRAFFIC COUNTS | 2022:

Catoctin Mountain Highway	22,777 ADT
Taneytown Pike	6,452 ADT

BO GALLES

bgalles@klnb.com | 703-268-2712

PHIL RUXTON

pruxton@klnb.com | 202-420-7777

BOB BROWNING

bbrowning@klnb.com | 703-268-2717





10201 TANEYTOWN PIKE

FOR MORE INFORMATION, PLEASE CONTACT:

klnb.com



[instagram.com/klnbcre](https://www.instagram.com/klnbcre)



[linkedin.com/company/klnb](https://www.linkedin.com/company/klnb)



[facebook.com/KLNBCRE](https://www.facebook.com/KLNBCRE)

CLICK TO VIEW PROPERTY WEBSITE

While we have no reason to doubt the accuracy of any of the information supplied, we cannot, and do not, guarantee its accuracy. All information should be independently verified prior to a purchase or lease of the property. We are not responsible for errors, omissions, misuse, or misinterpretation of information contained herein and make no warranty of any kind, express or implied, with respect to the property or any other matters.