



## AVAILABILITY

- Available March 1, 2024
- 1.79 Acres
- 4,050 SF warehouse on site with dock loading & ramp
- 2,721 SF office
- \$20,000/month + utilities

## FOR LEASE - OUTDOOR STORAGE + WAREHOUSE + OFFICE

- Gravel lot with fenced entrance
- Zoned: PDGI
  - Auto Repair
  - Contractor
  - Moving & Storage

**TYLER CUMBERLAND**

tumberland@klnb.com | 703-268-2720

**RYAN GOELLER**

rgoeller@klnb.com | 703-268-2731

**CHASE STEWART**

cstewart@klnb.com | 703-268-2732

**JEFF TARAE**

jtarae@klnb.com | 703-268-2741



# SITE PLAN

# 42128 JOHN MOSBY HWY

ALIDE, VA 20105, LOUDOUN COUNTY



**TYLER CUMBERLAND**

tcumberland@klnb.com | 703-268-2720

**RYAN GOELLER**

rgoeller@klnb.com | 703-268-2731

**CHASE STEWART**

cstewart@klnb.com | 703-268-2732

**JEFF TARAE**

jtarae@klnb.com | 703-268-2741



# PHOTOS

## 42128 JOHN MOSBY HWY

ALIDE, VA 20105, LOUDOUN COUNTY

PROPERTY ENTRANCE



WAREHOUSE LOADING



GRAVEL LOT



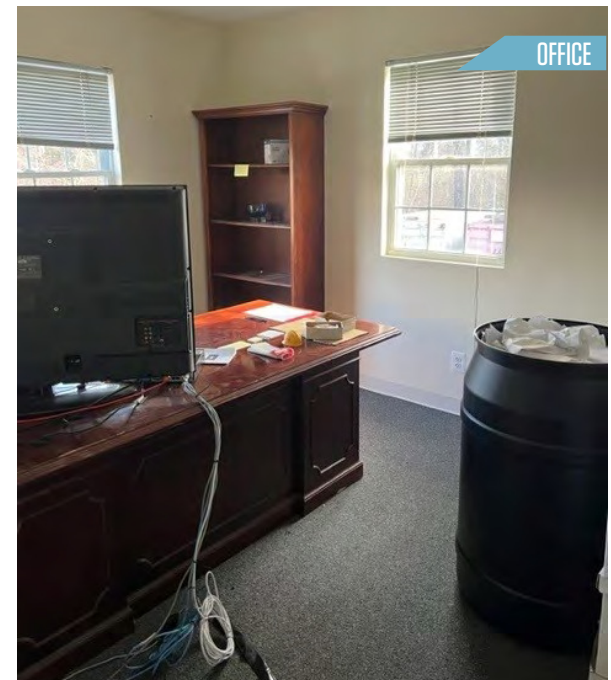
OUTDOOR STORAGE



OFFICE



OFFICE



**TYLER CUMBERLAND**

tcumberland@klnb.com | 703-268-2720

**RYAN GOELLER**

rgoeller@klnb.com | 703-268-2731

**CHASE STEWART**

cstewart@klnb.com | 703-268-2732

**JEFF TARAE**

jtarae@klnb.com | 703-268-2741

**NA**kl**nb**



# AERIAL

# 42128 JOHN MOSBY HWY

ALDIE, VA 20105, LOUDOUN COUNTY



TYLER CUMBERLAND

tumberland@klnb.com | 703-268-2720

RYAN GOELLER

rgoeller@klnb.com | 703-268-2731

CHASE STEWART

cstewart@klnb.com | 703-268-2732

JEFF TARAE

jtarae@klnb.com | 703-268-2741







# 42128 JOHN MOSBY HWY

ALDIE, VA 20105 LOUDOUN COUNTY

## FOR MORE INFORMATION, PLEASE CONTACT:

### TYLER CUMBERLAND

tcumberland@klnb.com  
703-268-2720

### RYAN GOELLER

rgoeller@klnb.com  
703-268-2731

### CHASE STEWART

cstewart@klnb.com  
703-268-2732

### JEFF TARAE

jtarae@klnb.com  
703-268-2741

8065 Leesburg Pike, Suite 700, Tysons, VA 22182

[klnb.com](http://klnb.com)



[instagram.com/klnbcre](https://www.instagram.com/klnbcre)



[linkedin.com/company/klnb](https://www.linkedin.com/company/klnb)



[facebook.com/KLNBCRE](https://www.facebook.com/KLNBCRE)

[CLICK TO VIEW PROPERTY WEBSITE](#)

While we have no reason to doubt the accuracy of any of the information supplied, we cannot, and do not, guarantee its accuracy. All information should be independently verified prior to a purchase or lease of the property. We are not responsible for errors, omissions, misuse, or misinterpretation of information contained herein and make no warranty of any kind, express or implied, with respect to the property or any other matters.