



## HIGHLY VISIBLE RETAIL PAD OPPORTUNITIES ACROSS FROM MAJOR SPORTSPLEX AND CIVIC CENTER

- 2,500 SF Pad opportunity with Drive-Thru Available.
- 17,215 SF of retail space available on future pads.
- Multipurpose commercial space available within Pantherplex facility.
- 201,600 Visits in the last 12 months [Placer.ai]

**JOHN MEYER**

jmeyer@klnb.com | 443-632-2052

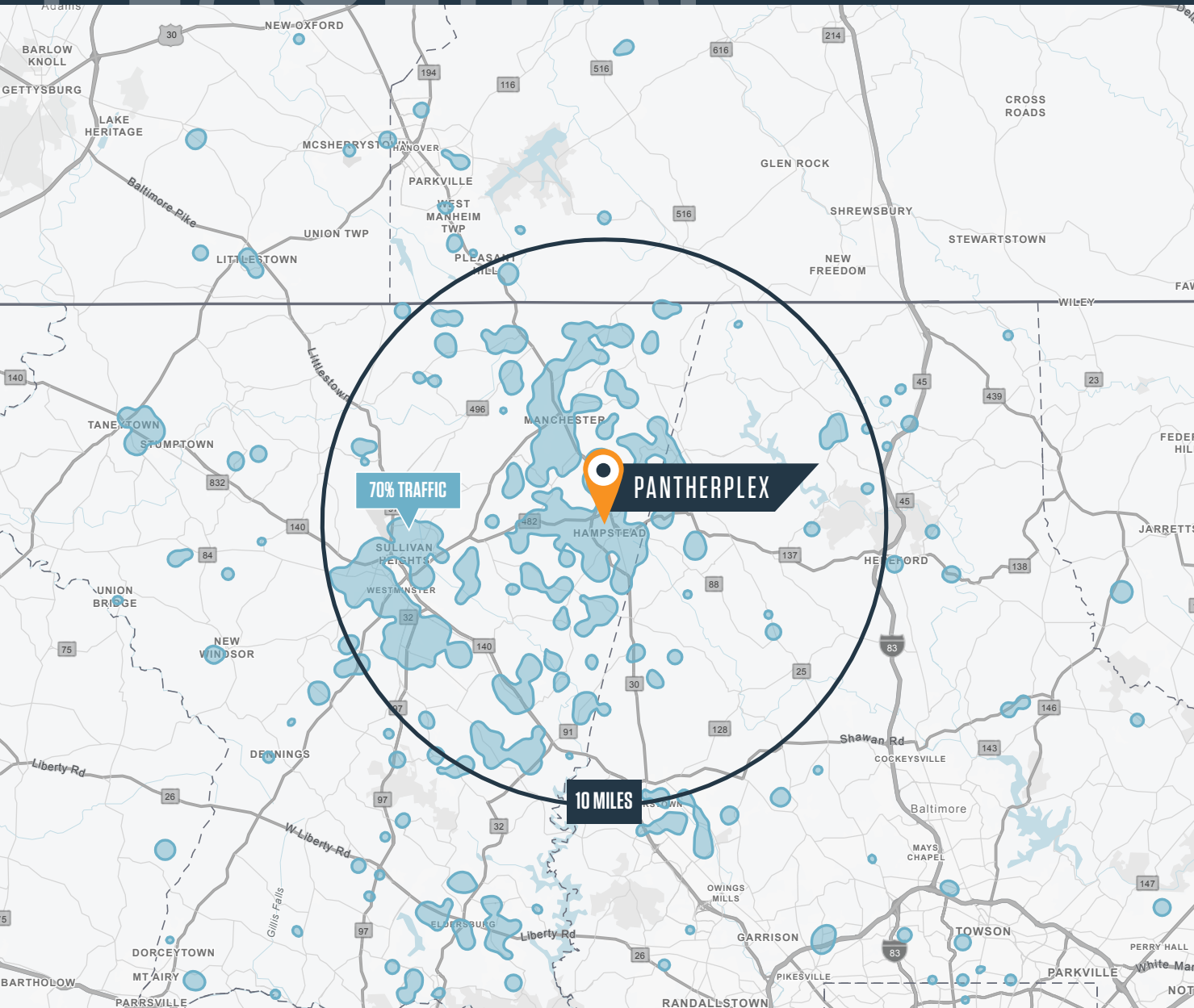
**BRIAN FINKELSTEIN**

bfinkelstein@klnb.com | 443-632-2076

**AMANDA DEVINNEY**

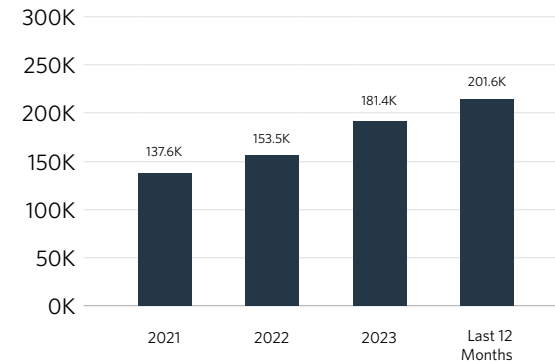
adevinney@klnb.com | 443-632-2045





## VISIT TREND | PANTHERPLEX

- Year-Round Regional Destination
- +31% increase in visitor traffic (since 2022)



**JOHN MEYER**

jmeyer@klnb.com | 443-632-2052

**BRIAN FINKELSTEIN**

bfinkelstein@klnb.com | 443-632-2076

**AMANDA DEVINNEY**

adevinney@klnb.com | 443-632-2045

# FEATURES

## PANTHERPLEX

MEXICO RD & PANTHER DRIVE, HAMPSTEAD, MD 21074, CARROLL COUNTY



### THE ANCHOR: COPPERMINE PANTHERPLEX, A REGIONAL DESTINATION

- Host of regional Recreational Leagues
- Dance Competition Destination
- Home to Local Theater Company, Players on Air

### JOIN EXISTING BUSINESSES:

- Carroll Community College
- Sheriff's Office
- Boys and Girls Club
- Christiana Academy

### FACILITIES INCLUDE:

- Multiple outdoor fields, including baseball and athletic fields
- 6 Outdoor Tennis Courts
- Indoor Pickleball Courts
- Indoor Basketball Courts
- Wrestling Facility
- Indoor Theater and Auditorium
- Private Event Space

**JOHN MEYER**

jmeyer@klnb.com | 443-632-2052

**BRIAN FINKELSTEIN**

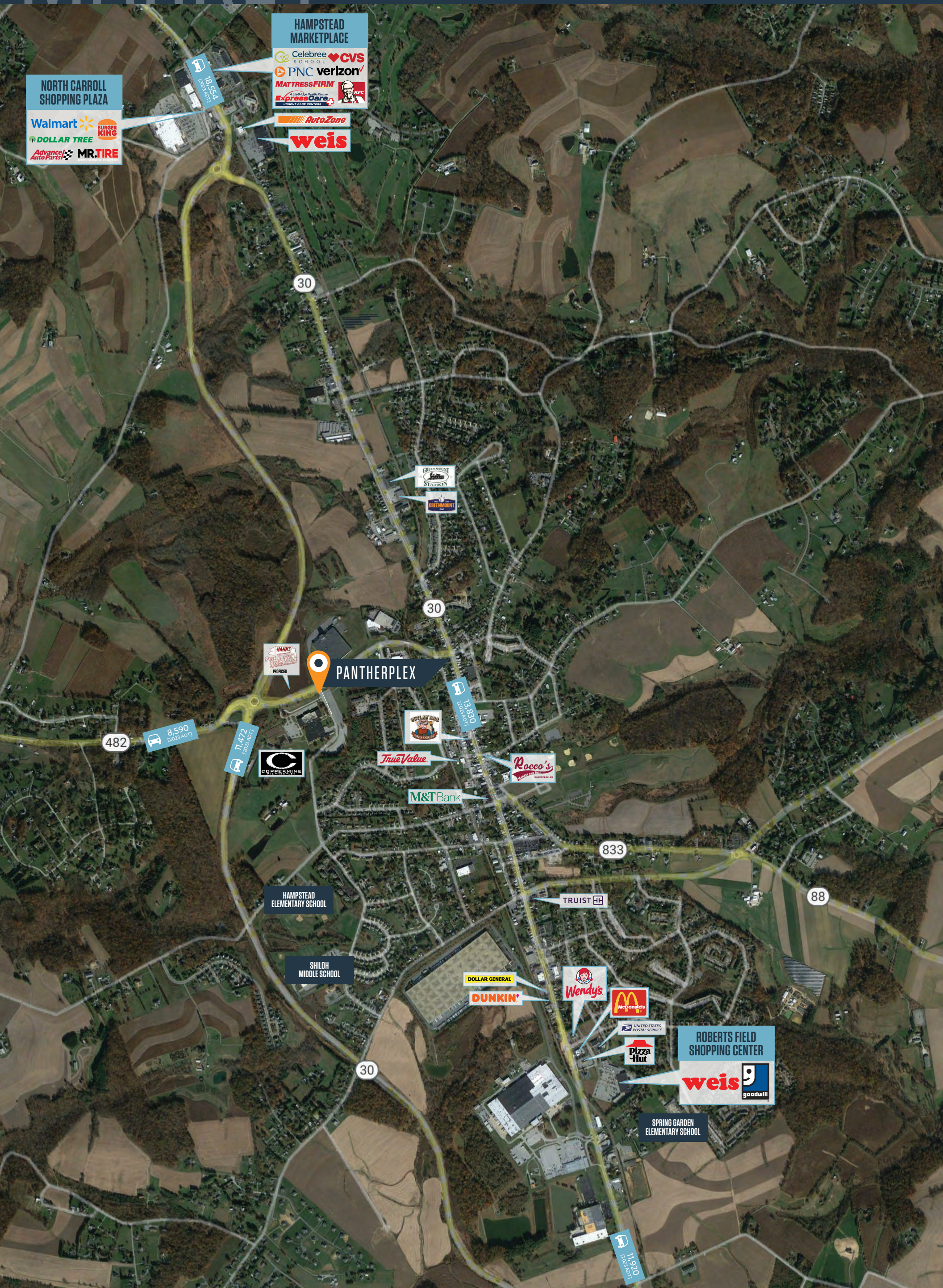
bfinkelstein@klnb.com | 443-632-2076

**AMANDA DEVINNEY**

adevinney@klnb.com | 443-632-2045











**JOHN MEYER**

[jmeyer@klnb.com](mailto:jmeyer@klnb.com) | 443-632-2052

**BRIAN FINKELSTEIN**

[bfinkelstein@klnb.com](mailto:bfinkelstein@klnb.com) | 443-632-2076

**AMANDA DEVINNEY**

[adevinney@klnb.com](mailto:adevinney@klnb.com) | 443-632-2045



# CLOSEUP

# PANTHERPLEX

MEXICO RD & PANTHER DRIVE, HAMPSTEAD, MD 21074, CARROLL COUNTY

FUTURE RETAIL PADS AVAILABLE



**COPPERMINE PANTHERPLEX**  
 YEARLY VISITS 201.6K

#	TENANT	SIZE
<b>PAD SITE 1</b>		
1	AVAILABLE	10,200 SF
<b>PAD SITE 2</b>		
1	AVAILABLE	2,500 SF
2	AVAILABLE	7,015 SF
<b>COPPERMINE BUILDING</b>		
1	AVAILABLE	13,000 SF
2	AVAILABLE	6,000 SF
3	AVAILABLE	4,900 SF
4	AVAILABLE	3,700 SF
5	AVAILABLE	9,300 SF
6	AVAILABLE	5,300 SF
7	AVAILABLE	5,700 SF

**JOHN MEYER**

jmeyer@klnb.com | 443-632-2052

**BRIAN FINKELSTEIN**

bfinkelstein@klnb.com | 443-632-2076

**AMANDA DEVINNEY**

adevinney@klnb.com | 443-632-2045





# SITE PLAN

# PANTHERPLEX

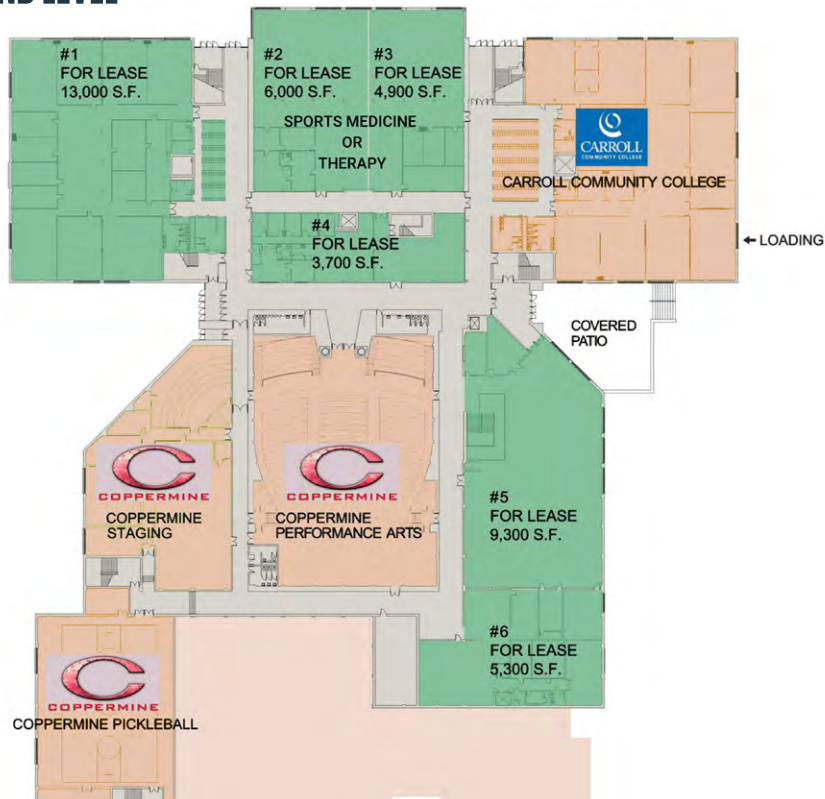
MEXICO RD & PANTHER DRIVE, HAMPSTEAD, MD 21074, CARROLL COUNTY

## MULTIPURPOSE COMMERCIAL SPACE AVAILABLE IMMEDIATELY

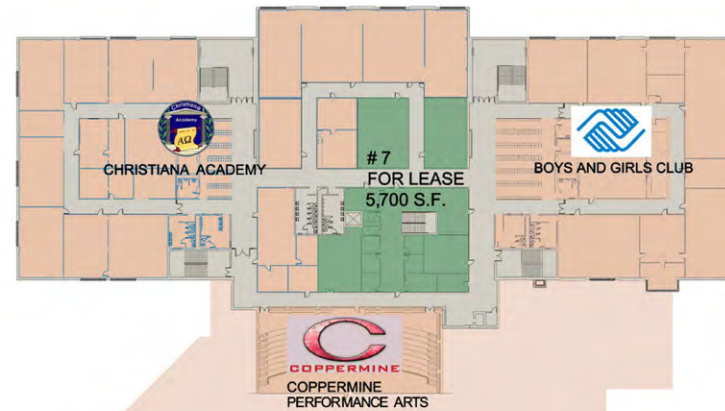
Ideal for medical uses, recreational uses, and small businesses

- Lower Level - Fully Leased
- Ground Floor - Up to 41,600 SF Commercial/Recreational space available (Demising scenarios available)
- Upper Level - 5,700 SF Available

### GROUND LEVEL



### UPPER LEVEL



### KEY

	Available
	Leased

**JOHN MEYER**

[jmeyer@klnb.com](mailto:jmeyer@klnb.com) | 443-632-2052

**BRIAN FINKELSTEIN**

[bfinkelstein@klnb.com](mailto:bfinkelstein@klnb.com) | 443-632-2076

**AMANDA DEVINNEY**

[adevinney@klnb.com](mailto:adevinney@klnb.com) | 443-632-2045

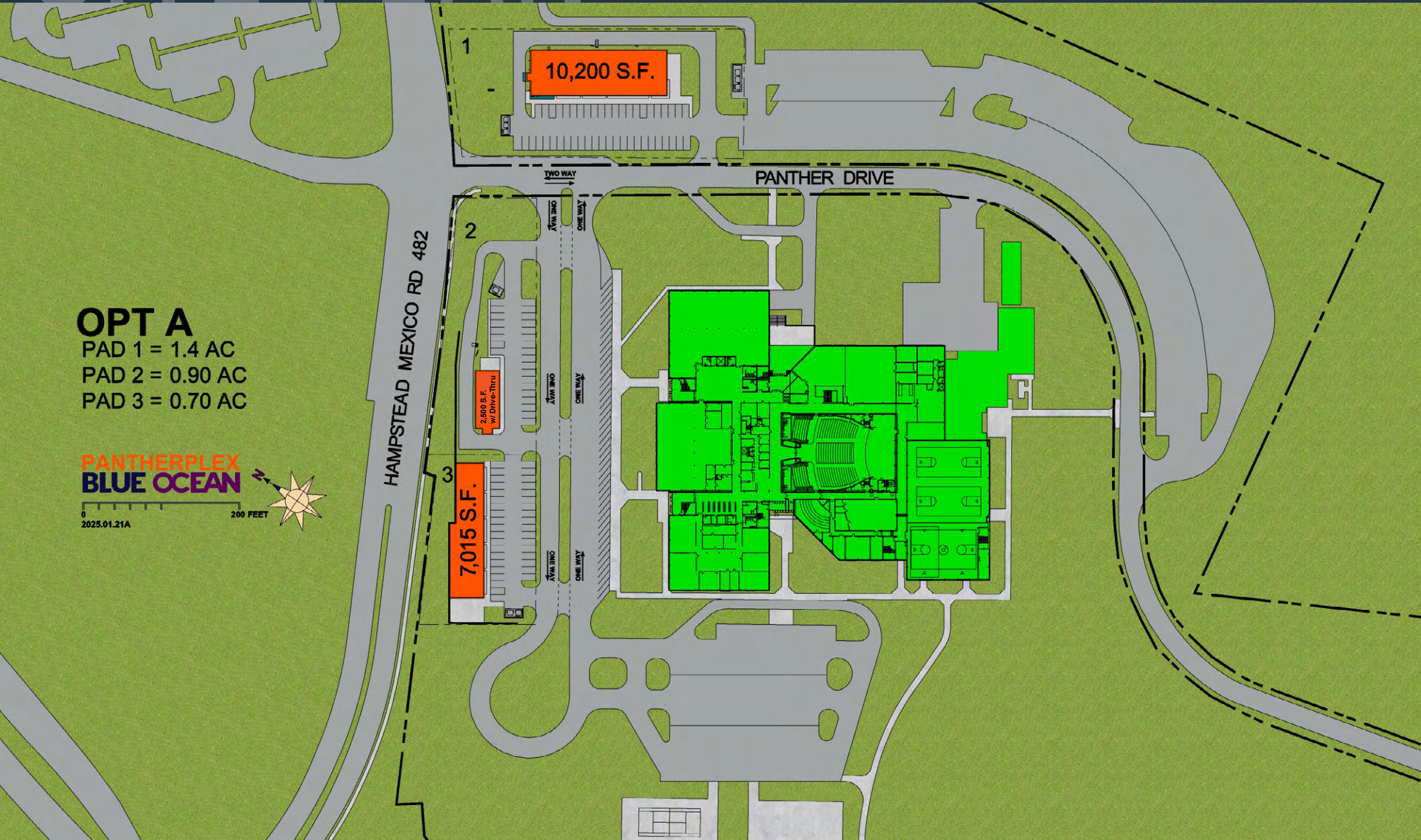
**klnb**



# SITE PLAN

# PANTHERPLEX

MEXICO RD & PANTHER DRIVE, HAMPSTEAD, MD 21074, CARROLL COUNTY



## OPT A

- PAD 1 = 1.4 AC
- PAD 2 = 0.90 AC
- PAD 3 = 0.70 AC

PANTHERPLEX  
BLUE OCEAN

2025.01.21A

**JOHN MEYER**

[jmeyer@klnb.com](mailto:jmeyer@klnb.com) | 443-632-2052

**BRIAN FINKELSTEIN**

[bfinkelstein@klnb.com](mailto:bfinkelstein@klnb.com) | 443-632-2076

**AMANDA DEVINNEY**

[adevinney@klnb.com](mailto:adevinney@klnb.com) | 443-632-2045





# SITE PLAN

# PANTHERPLEX

MEXICO RD & PANTHER DRIVE, HAMPSTEAD, MD 21074, CARROLL COUNTY



**OPT B**  
PAD 1 = 1.4 AC  
PAD 2 = 0.90 AC  
PAD 3 = 1.43 AC

**PANTHERPLEX  
BLUE OCEAN**

0 200 FEET  
2025.01.21A

**JOHN MEYER**

[jmeyer@klnb.com](mailto:jmeyer@klnb.com) | 443-632-2052

**BRIAN FINKELSTEIN**

[bfinkelstein@klnb.com](mailto:bfinkelstein@klnb.com) | 443-632-2076

**AMANDA DEVINNEY**

[adevinney@klnb.com](mailto:adevinney@klnb.com) | 443-632-2045





# CONCEPT

# PANTHERPLEX

MEXICO RD & PANTHER DRIVE, HAMPSTEAD, MD 21074, CARROLL COUNTY



**JOHN MEYER**

[jmeyer@klnb.com](mailto:jmeyer@klnb.com) | 443-632-2052

**BRIAN FINKELSTEIN**

[bfinkelstein@klnb.com](mailto:bfinkelstein@klnb.com) | 443-632-2076

**AMANDA DEVINNEY**

[adevinney@klnb.com](mailto:adevinney@klnb.com) | 443-632-2045







# PANTHERPLEX

MEXICO RD & PANTHER DRIVE, HAMPSTEAD, MD 21074, CARROLL COUNTY

## FOR MORE INFORMATION, PLEASE CONTACT:

### JOHN MEYER

[jmeyer@klnb.com](mailto:jmeyer@klnb.com)  
443-632-2052

### BRIAN FINKELSTEIN

[bfinkelstein@klnb.com](mailto:bfinkelstein@klnb.com)  
443-632-2076

### AMANDA DEVINNEY

[adevinney@klnb.com](mailto:adevinney@klnb.com)  
443-632-2045

100 West Road, Suite 505, Towson, MD 21204

.....

## klnb.com



[instagram.com/klnbcre](https://www.instagram.com/klnbcre)



[linkedin.com/company/klnb](https://www.linkedin.com/company/klnb)



[facebook.com/KLNBCRE](https://www.facebook.com/KLNBCRE)

**CLICK TO VIEW PROPERTY WEBSITE**

While we have no reason to doubt the accuracy of any of the information supplied, we cannot, and do not, guarantee its accuracy. All information should be independently verified prior to a purchase or lease of the property. We are not responsible for errors, omissions, misuse, or misinterpretation of information contained herein and make no warranty of any kind, express or implied, with respect to the property or any other matters.