



**FOR LEASE**

## AVAILABILITY

**14,650 SF Total**

- 11,405 SF Warehouse
- 3,245 SF Office

**Free standing industrial property with secured outdoor storage.**

\$14/NNN

**KENNETH FELLOWS**

kfellows@klnb.com | 301-222-0210

**ROBERT PUGH**

rpugh@klnb.com | 301-222-0211

**KEIRY MARTINEZ**

kmartinez@klnb.com | 703-334-5629

**JACKIE MCGAUGHEY**

jmcgaughey@klnb.com | 301.264.8820

## PROPERTY HIGHLIGHTS

This industrial property is comprised of warehouse space and is equipped with front office space that is usable for tenants. Conveniently located only 0.2 miles off Rt. 15, this property provides easy access to Rt.15, I-70, and I-270.

- 11,405 SF Warehouse
- 3,245 SF Office
- 4.41 Acres fenced yard with pole barn

WAREHOUSE	
Building Size	14,650 SF 11,405 - Warehouse 3,245 - Office
Water	City
Sewer	City
Gas	Natural
Power Supply	Phase 3
Drive Ins	7 Total
Zoning	Industrial Park (IP)/ Light Industrial, Town of Emmitsburg

AMENITIES
Outdoor Storage Space
Fenced Lot
Shallow Bay
Mezzanine

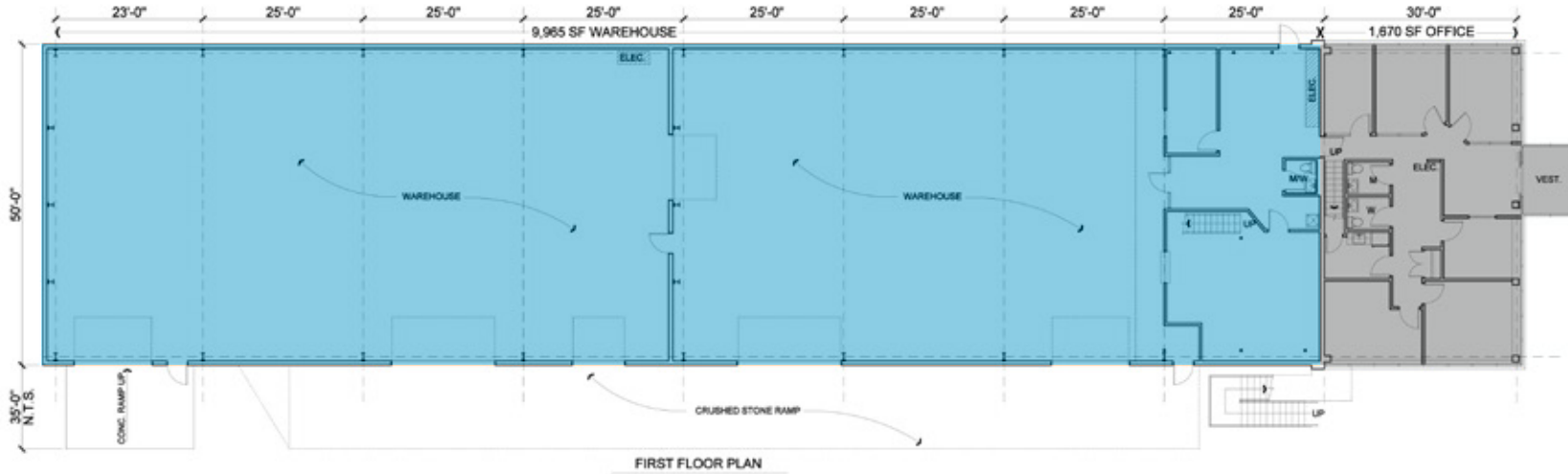
# FLOOR PLAN

## 2 CREAMERY WAY

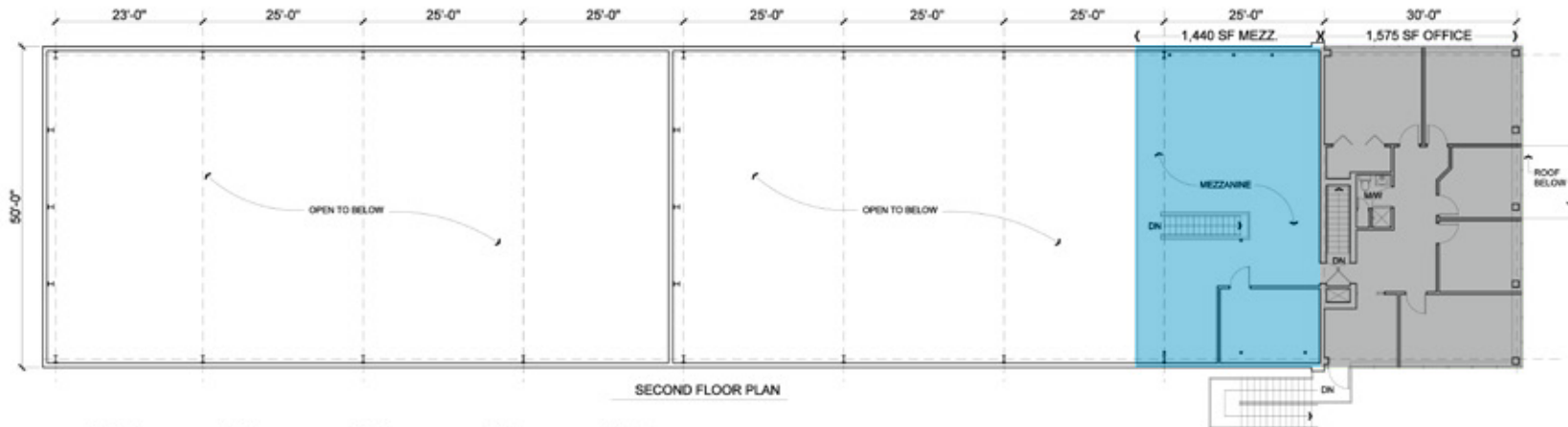
2 CREAMERY WAY EMMITSBURG, MD 21727



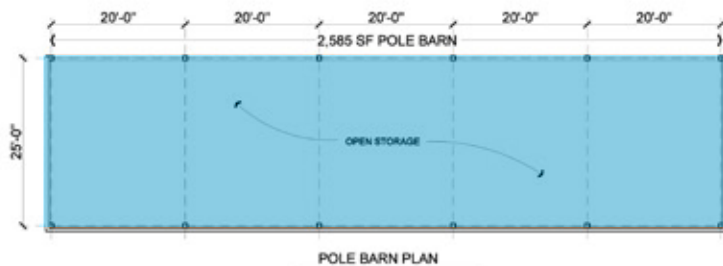
### First Floor



### Second Floor



### Pole Barn



**KENNETH FELLOWS**

kfellows@klnb.com | 301-222-0210

**ROBERT PUGH**

rpugh@klnb.com | 301-222-0211

**KEIRY MARTINEZ**

kmartinez@klnb.com | 703-334-5629

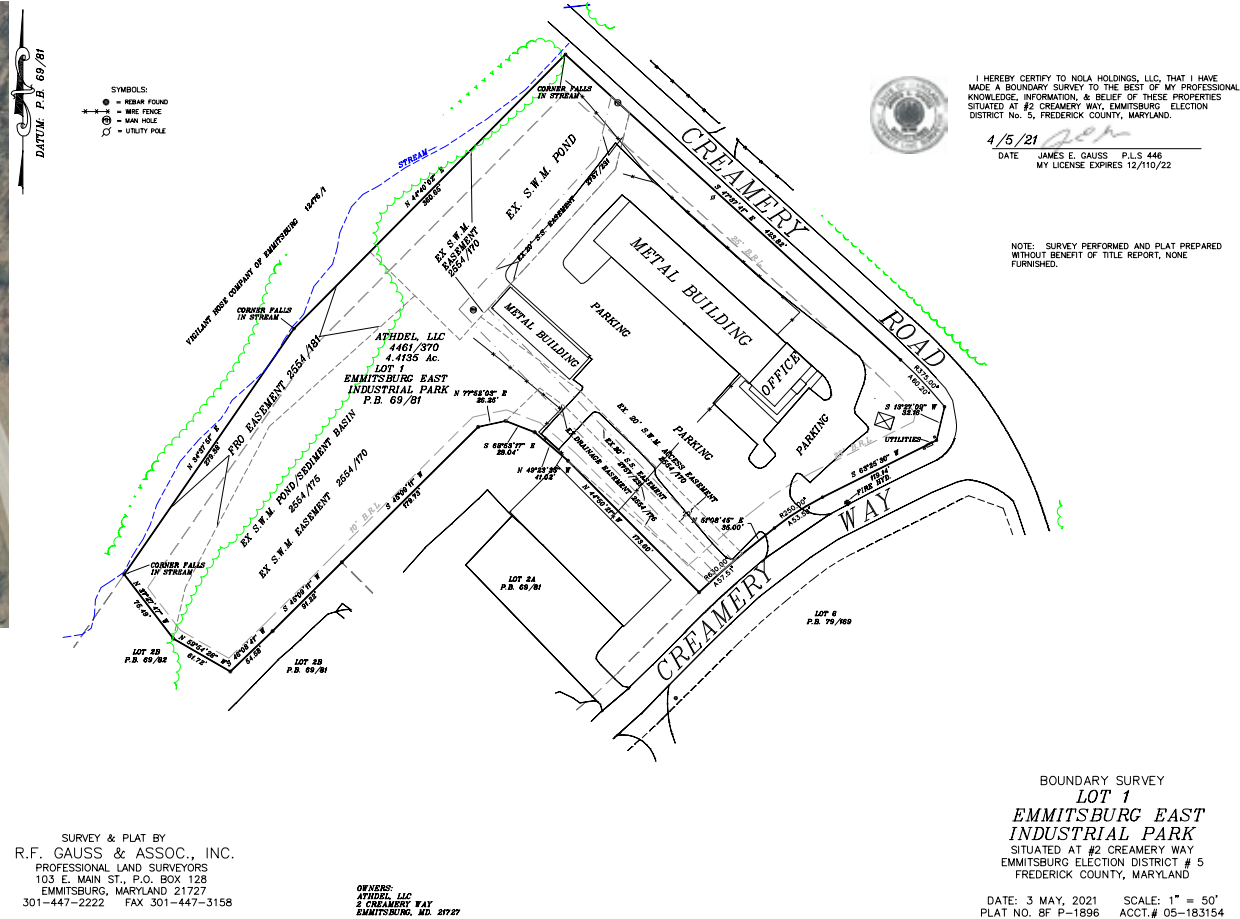
**JACKIE MCGAUGHEY**

jmcgaughey@klnb.com | 301.264.8820

# PROPERTY

## 2 CREAMERY WAY

2 CREAMERY WAY EMMITSBURG, MD 21727



**LAND**

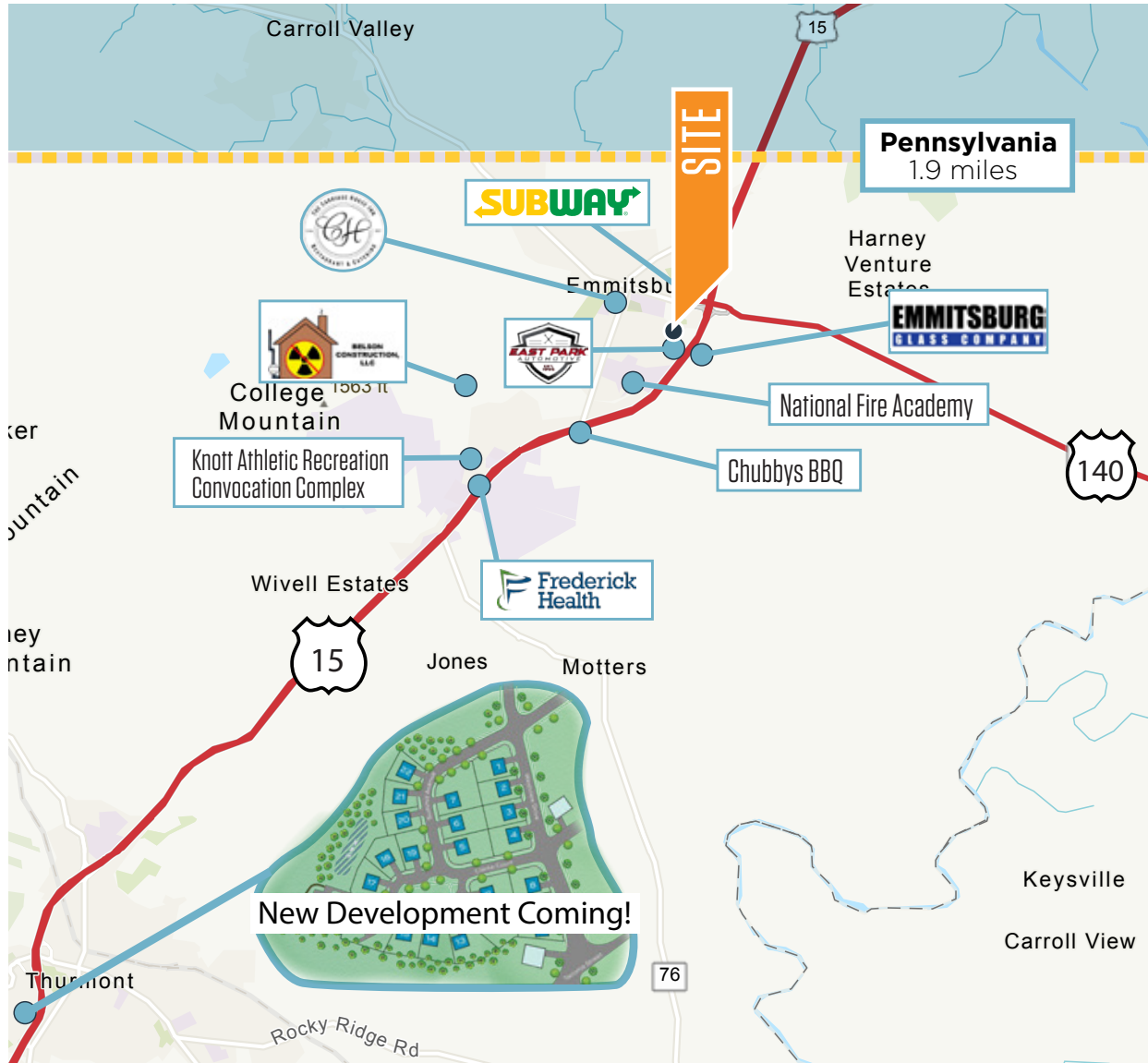
Land Acres: 4.41 AC

**KENNETH FELLOWS**  
 kfellows@klnb.com | 301-222-0210

**ROBERT PUGH**  
 rpugh@klnb.com | 301-222-0211

**KEIRY MARTINEZ**  
 kmartinez@klnb.com | 703-334-5629

**JACKIE MCGAUGHEY**  
 jmcgaughey@klnb.com | 301.264.8820



## Transportation

Distance to Highway	
Route 15	0.2 miles
Route 40	8.6 miles
I-70	25 miles
I-270	25 miles
I-81	34 miles

Commuter Rail	
MARC Station	24.7 miles

Airport	
Fredrick Municipal	24.1 miles
Hagerstown Regional	27.3 miles
Baltimore/Washington International	57.4 miles
Dulles International	64.8 miles
Ronald Reagan Washington	73.7 miles

Distance to Cities	
Pennsylvania	1.9 miles
Frederick	17 miles
Hagerstown	23 miles
Baltimore	45 miles
Washington, DC	62 miles

**KENNETH FELLOWS**

kfellows@klnb.com | 301-222-0210

**ROBERT PUGH**

rpugh@klnb.com | 301-222-0211

**KEIRY MARTINEZ**

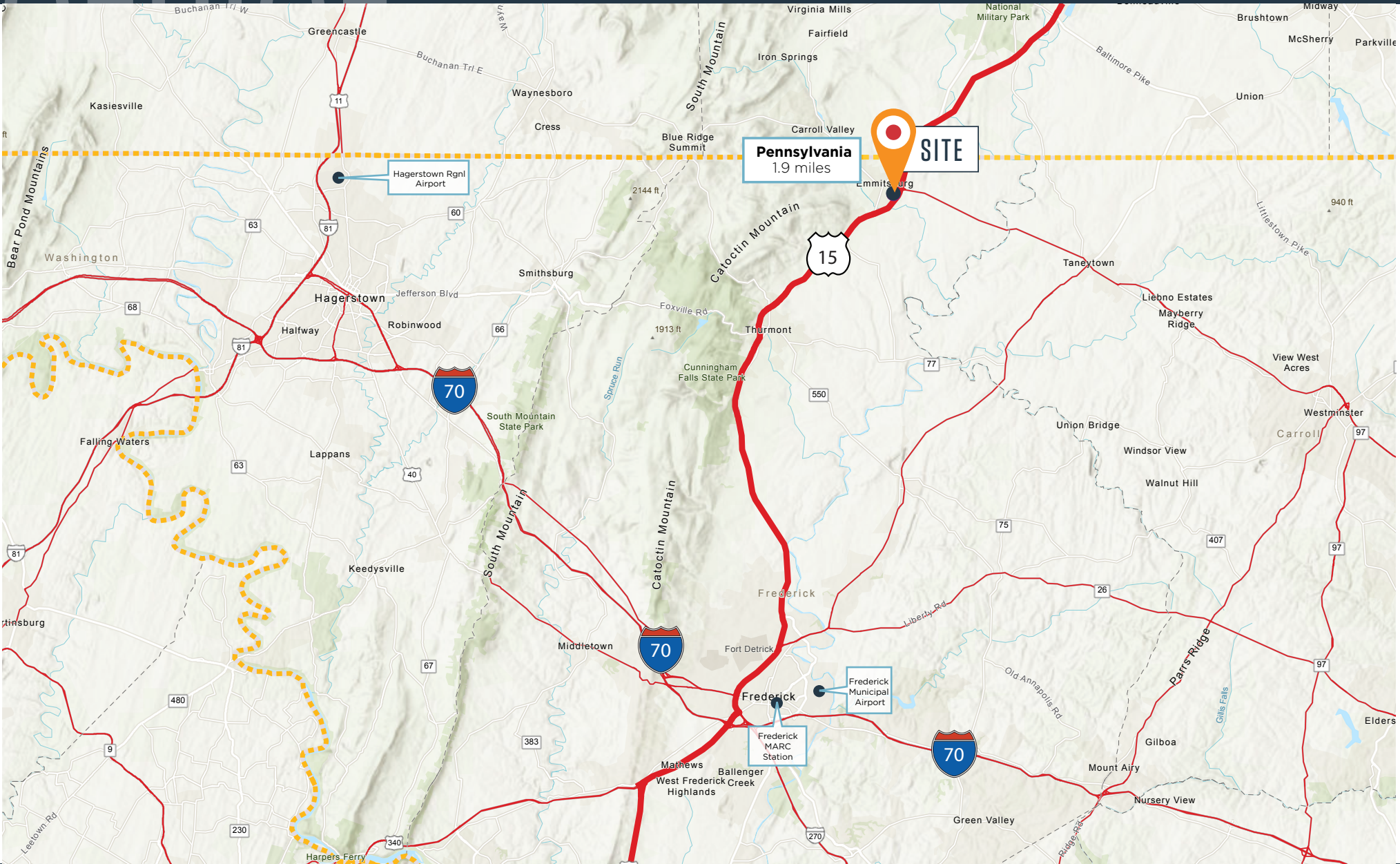
kmartinez@klnb.com | 703-334-5629

**JACKIE MCGAUGHEY**

jmcgaughey@klnb.com | 301.264.8820

# 2 CREAMERY WAY

2 CREAMERY WAY EMMITSBURG, MD 21727



**KENNETH FELLOWS**

kfellows@klnb.com | 301-222-0210

**ROBERT PUGH**

rpugh@klnb.com | 301-222-0211

**KEIRY MARTINEZ**

kmartinez@klnb.com | 703-334-5629

**JACKIE MCGAUGHEY**

jmcgaughey@klnb.com | 301.264.8820

# PHOTOS

**2 CREAMERY WAY**  
2 CREAMERY WAY EMMITSBURG, MD 21727

**klnb**



**KENNETH FELLOWS**  
kfellows@klnb.com | 301-222-0210

**ROBERT PUGH**  
rpugh@klnb.com | 301-222-0211

**KEIRY MARTINEZ**  
kmartinez@klnb.com | 703-334-5629

**JACKIE MCGAUGHEY**  
jmccaughey@klnb.com | 301.264.8820

# PHOTOS

## 2 CREAMERY WAY

2 CREAMERY WAY EMMITSBURG, MD 21727



**KENNETH FELLOWS**

kfellows@klnb.com | 301-222-0210

**ROBERT PUGH**

rpugh@klnb.com | 301-222-0211

**KEIRY MARTINEZ**

kmartinez@klnb.com | 703-334-5629

**JACKIE MCGAUGHEY**

jmcgaughey@klnb.com | 301.264.8820





# 2 CREAMERY WAY

2 CREAMERY WAY EMMITSBURG, MD 21727

## FOR MORE INFORMATION, PLEASE CONTACT:

### **KENNETH FELLOWS**

kfellows@klnb.com  
301-222-0210

### **ROBERT PUGH**

rpugh@klnb.com  
301-222-0211

### **KEIRY MARTINEZ**

kmartinez@klnb.com  
703-334-5629

### **JACKIE MCGAUGHEY**

jmcgaughey@klnb.com  
301-264-8820

12435 Park Potomac Ave, Suite 250, Rockville, MD, 20854

.....  
**klnb.com**

 [facebook.com/KLNBCRE](https://facebook.com/KLNBCRE)

 [linkedin.com/company/klnb](https://linkedin.com/company/klnb)

 [instagram.com/klnbcre](https://instagram.com/klnbcre)

**CLICK TO VIEW PROPERTY WEBSITE**

While we have no reason to doubt the accuracy of any of the information supplied, we cannot, and do not, guarantee its accuracy. All information should be independently verified prior to a purchase or lease of the property. We are not responsible for errors, omissions, misuse, or misinterpretation of information contained herein and make no warranty of any kind, express or implied, with respect to the property or any other matters.