

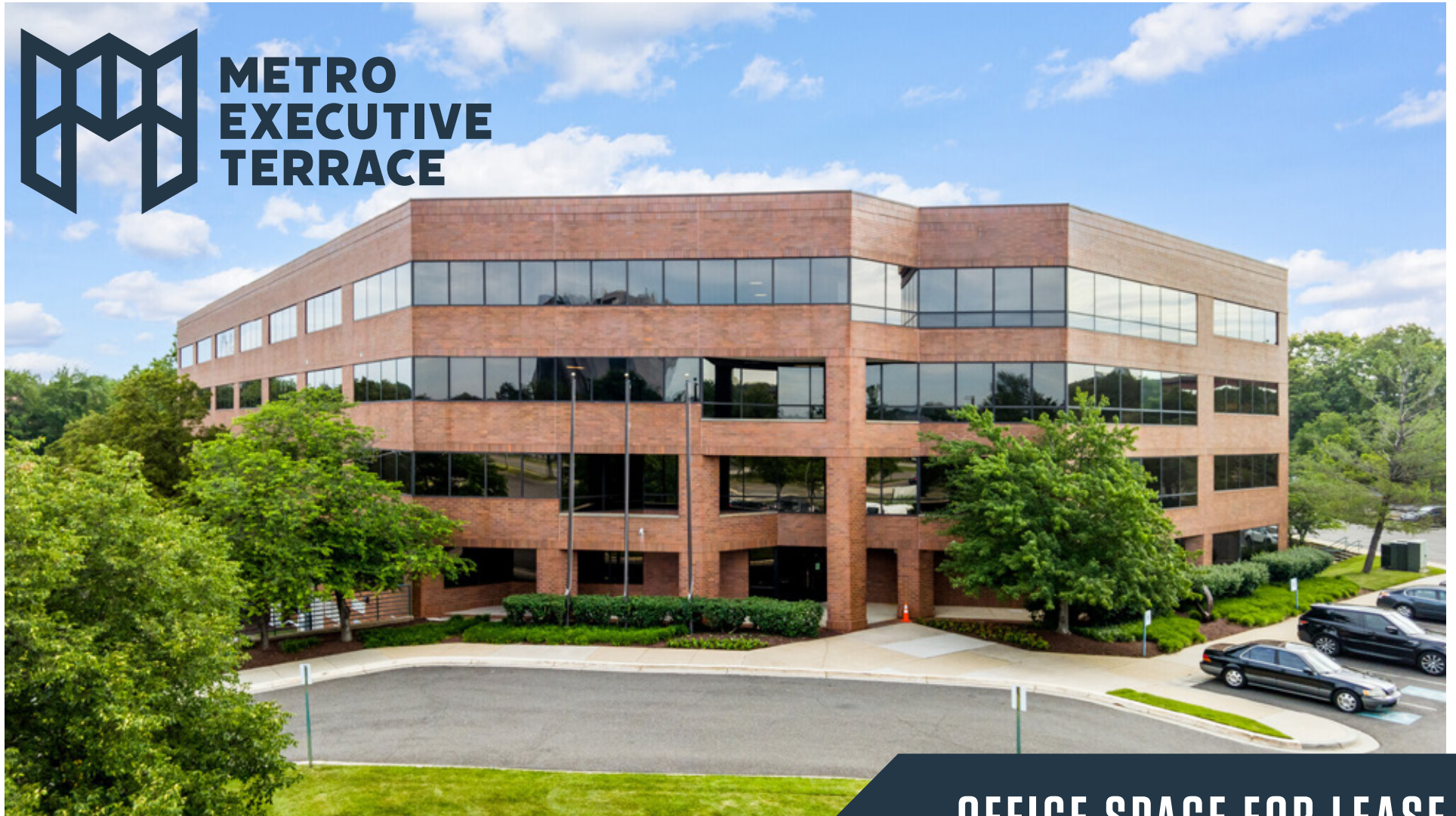


# METRO EXECUTIVE TERRACE

8400 CORPORATE DRIVE | LANDOVER, MD 20785



## METRO EXECUTIVE TERRACE



**OFFICE SPACE FOR LEASE**

KENNETH FELLOWS  
kfellows@klnb.com  
301-222-0210

ROBERT PUGH  
rpugh@klnb.com  
301-222-0211

KEIRY MARTINEZ  
kmartinez@klnb.com  
703-334-5629

[klnb.com](http://klnb.com)



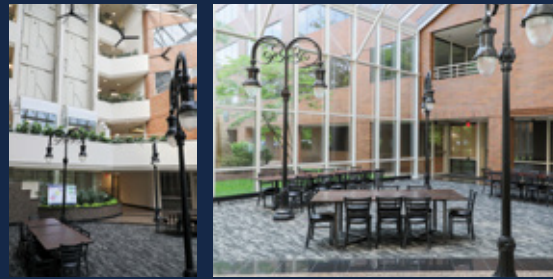
# METRO EXECUTIVE TERRACE

8400 CORPORATE DRIVE | LANDOVER, MD 20785

## Amenities Inside Out



ATRIUM



FITNESS CENTER



CONFERENCE / AVENUE C



### Building Info

<b>Address</b>	8400 Corporate Drive Landover, MD 20785
<b>Year Built</b>	1985
<b>Class</b>	A
<b>Site Area</b>	7.13 acres
<b>Total Building Size</b>	149,170 SF
<b>Number of Floors</b>	5 stories
<b>Parking</b>	530 free Surface Spaces are available; Ratio of 3.20/1,000 SF Additional parking available
<b>Amenities</b>	Avenue C - Self-serving micro-market Fitness center - On-site, tenant-only Atrium - Available for lunch and events Shared Conference Facility Free Shuttle to New Carrollton Metro Station
<b>Highlights</b>	Local, well established ownership Spec suite available New common area finishes Monument & exterior signage opportunity Highly visible from Route-50

KENNETH FELLOWS  
kfellows@klnb.com  
301-222-0210

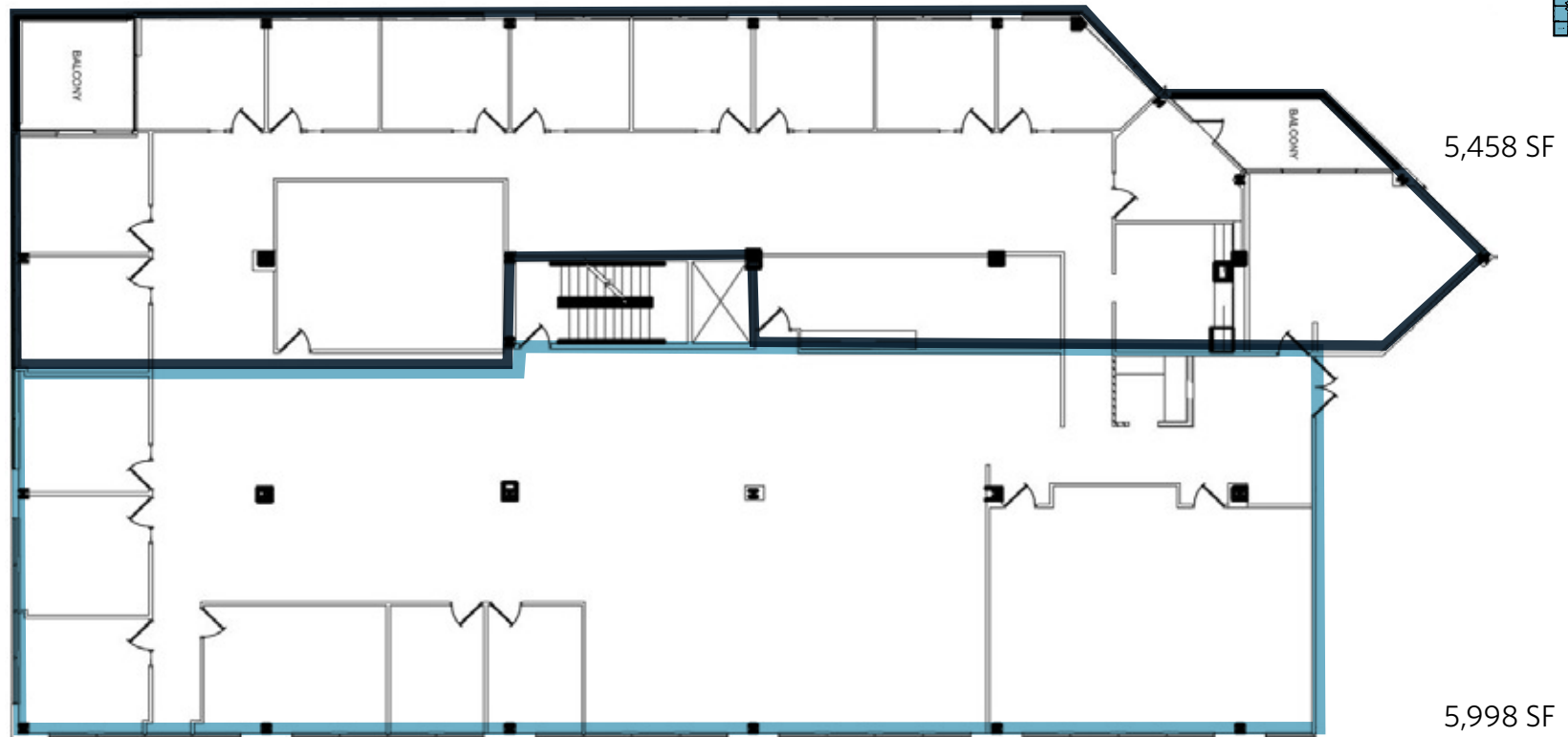
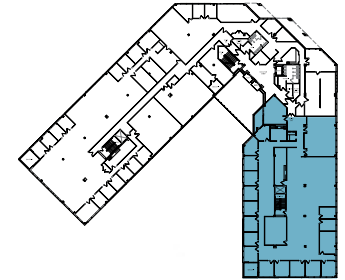
ROBERT PUGH  
rpugh@klnb.com  
301-222-0211

KEIRY MARTINEZ  
kmartinez@klnb.com  
703-334-5629

## Third Floor

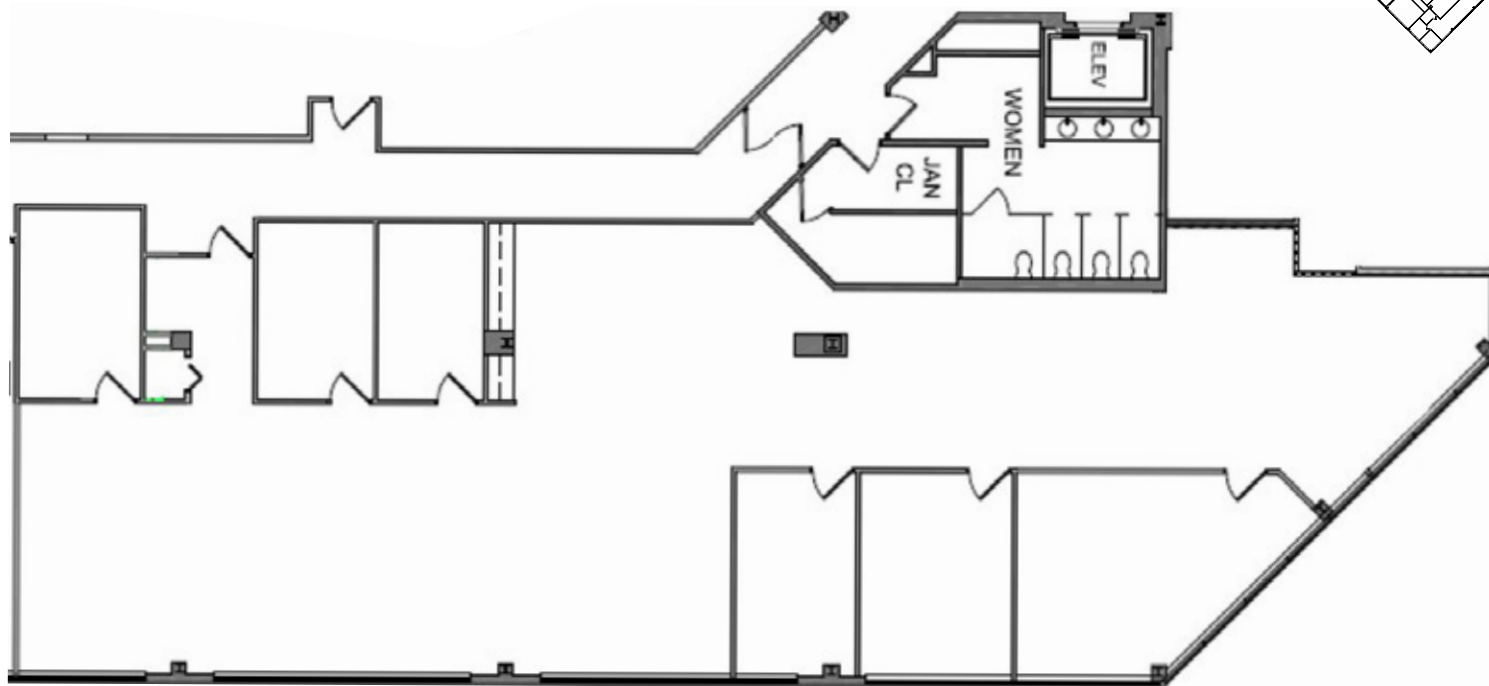
Suite 350 | Up to 11,456 SF

\* Demising Options



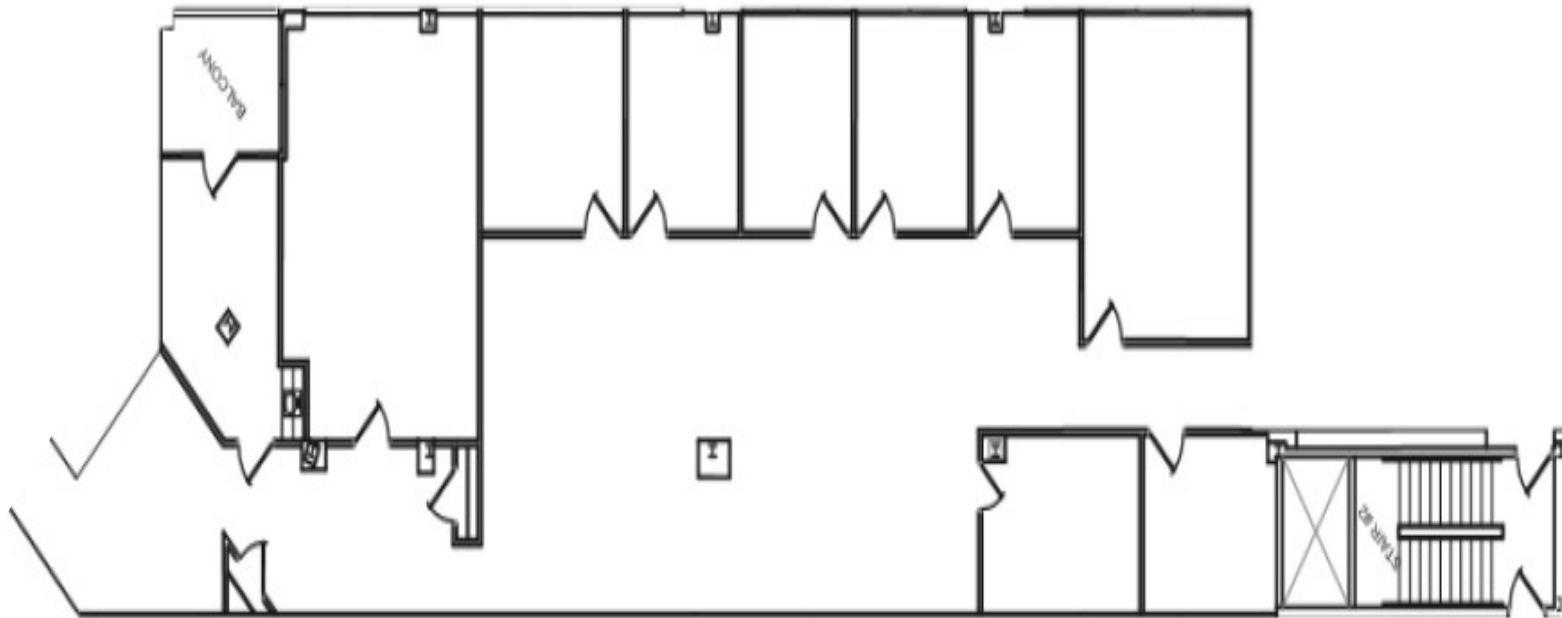
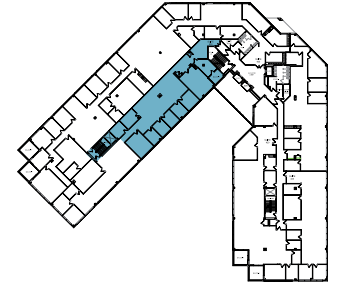
## Fourth Floor

Suite 420 | 4,303 SF



# Fourth Floor

Suite 450 | 4,400 SF



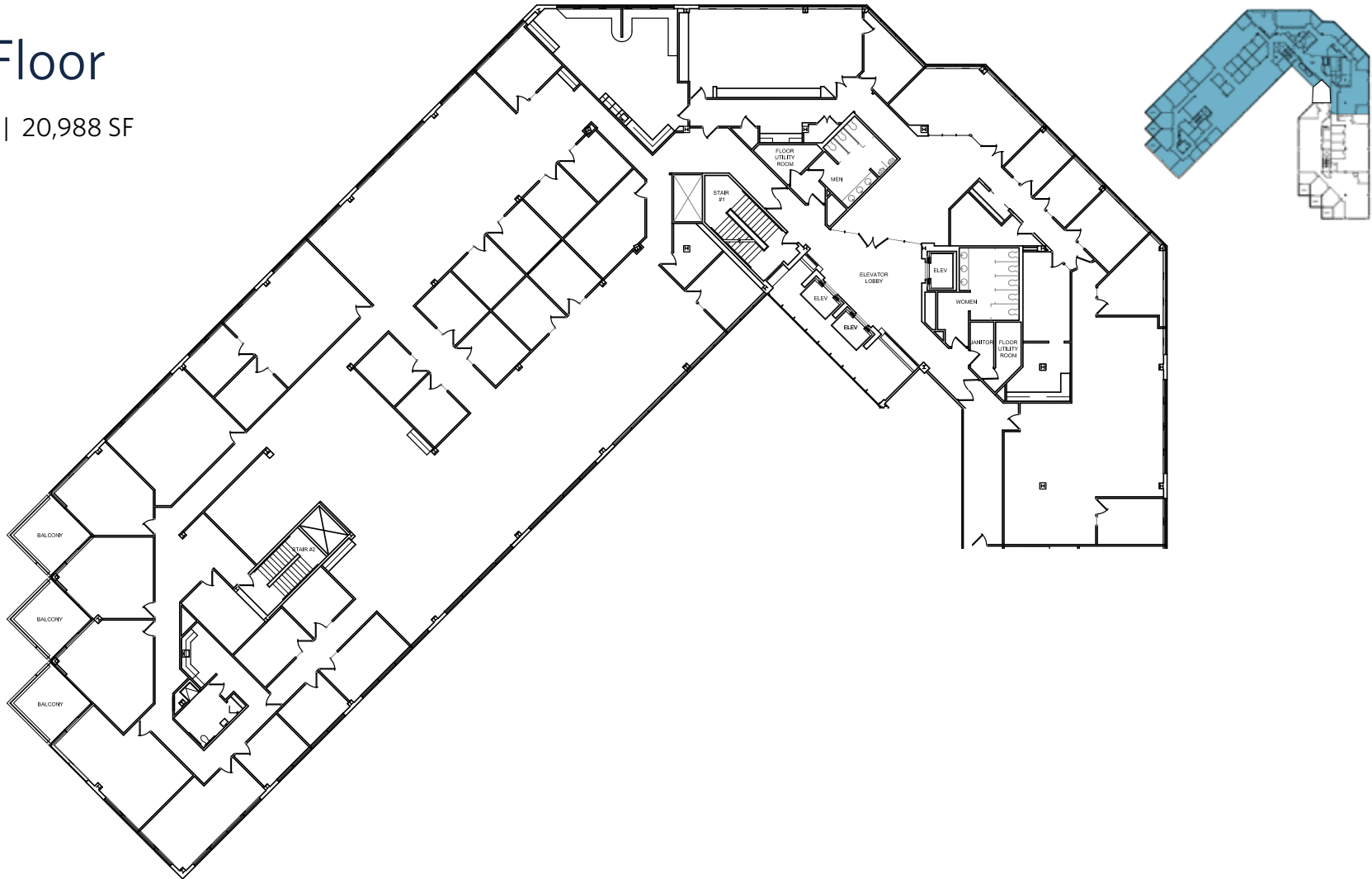


# METRO EXECUTIVE TERRACE

8400 CORPORATE DRIVE | LANDOVER, MD 20785

## Fifth Floor

Suite 500 | 20,988 SF



KENNETH FELLOWS  
kfellows@klnb.com  
301-222-0210

ROBERT PUGH  
rpugh@klnb.com  
301-222-0211

KEIRY MARTINEZ  
kmartinez@klnb.com  
703-334-5629

[klnb.com](http://klnb.com)

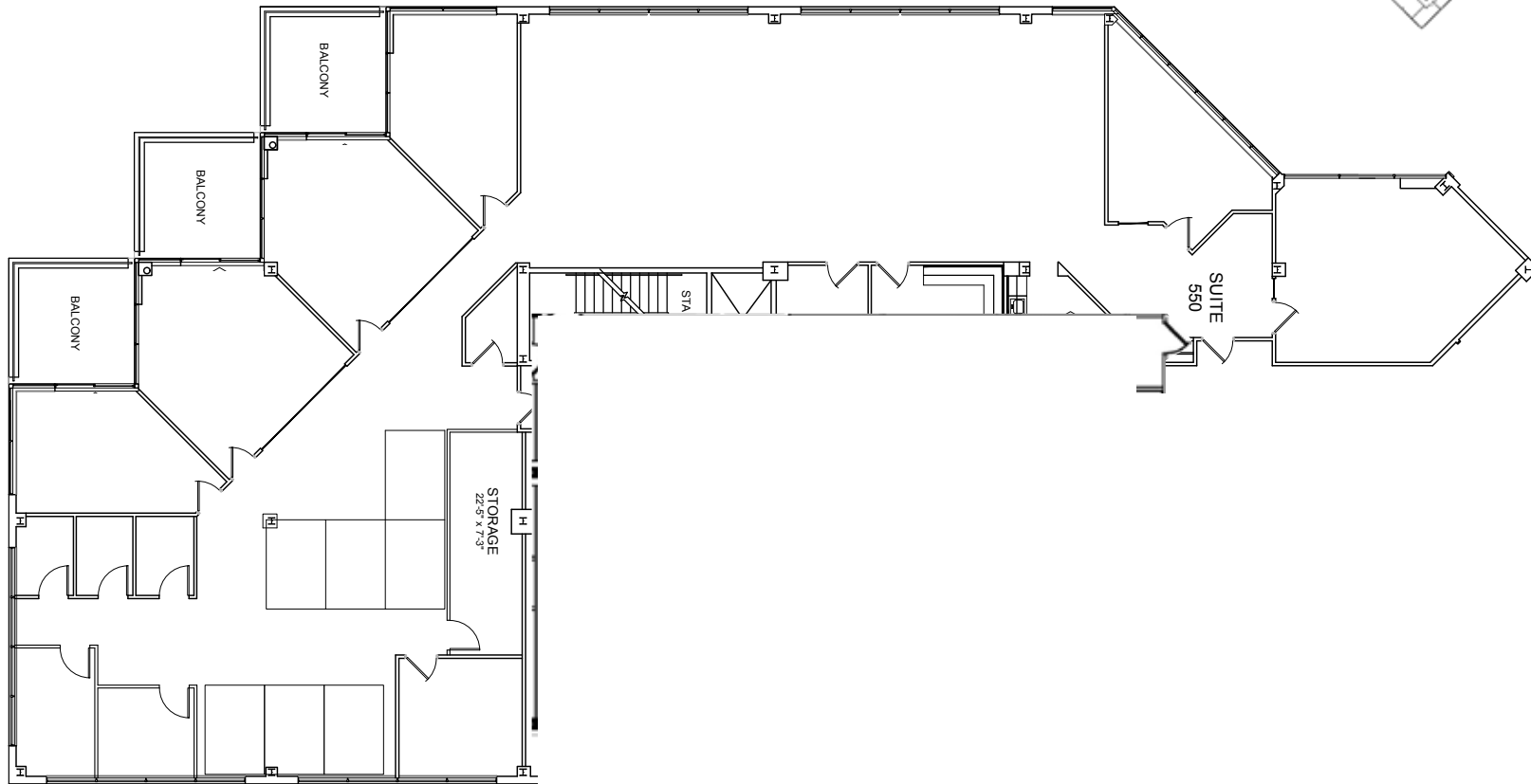


# METRO EXECUTIVE TERRACE

8400 CORPORATE DRIVE | LANDOVER, MD 20785

## Fifth Floor

Suite 550 | 6,878 SF



KENNETH FELLOWS  
kfellows@klnb.com  
301-222-0210

ROBERT PUGH  
rpugh@klnb.com  
301-222-0211

KEIRY MARTINEZ  
kmartinez@klnb.com  
703-334-5629

[klnb.com](http://klnb.com)



**METRO EXECUTIVE TERRACE**  
8400 CORPORATE DRIVE | LANDOVER, MD 20785

## CONTACT

KENNETH FELLOWS  
kfellows@klnb.com  
301-222-0210

ROBERT PUGH  
rpugh@klnb.com  
301-222-0211

KEIRY MARTINEZ  
kmartinez@klnb.com  
703-334-5629

12435 Park Potomac Ave, Suite 250,  
Rockville, MD, 20854

**klnb.com**

VISIT PROPERTY WEBSITE



While we have no reason to doubt the accuracy of any of the information supplied, we cannot, and do not, guarantee its accuracy. All information should be independently verified prior to a purchase or lease of the property. We are not responsible for errors, omissions, misuse, or misinterpretation of information contained herein and make no warranty of any kind, express or implied, with respect to the property or any other matters.

**klnb.com**