



WESTECH BUSINESS PARK - TALBOT

12120 Plum Orchard Dr, Silver Spring, MD 20904



OFFICE SPACE FOR LEASE

KENNETH FELLOWS
kfellows@klnb.com
301-222-0210

ROBERT PUGH
rpugh@klnb.com
301-222-0211

KEIRY MARTINEZ
kmartinez@klnb.com
703-334-5629

klnb.com



ORCHARD CENTER

KOHL'S

PETSMART

WESTTECH VILLAGE CORNER

Future 200,000 SF 390 Unit Apartment and Multiple Two-Over-Twos
Est. Delivery: 2025

WHITE OAK TOWN CENTER DEVELOPMENT

FIRST WATCH
THE DAYTIME CAFE

Oak Barrel & Vine Liquor Store

INSPIRE NAIL BAR & SPA

MONTGOMERY COLLEGE EAST EDUCATION CENTER

Adventist HealthCare White Oak Medical Center

VIVA WHITE OAK DEVELOPMENT

PROPERTY HIGHLIGHTS

- Type: 3 Star Office/Flex
- RBA: 38,132 SF
- Stories: 1
- Class: B
- Construction: Reinforced Concrete
- Year Built: 1989
- Parking: Surface - 116 (3.30/1,000 SF)
- Walk Score®: Somewhat Walkable (50)
- Transit Score®: Some Transit (47)

PROXIMITY

- ICC MD-200 2.0 mi.
- I-95 2.1 mi.
- I-495 4.2 mi.
- Univ. of Maryland. 5.2 mi.
- Downtown D.C 12.9 mi.
- BWI Airport 25.7 mi.

ABOUT NEW OWNERSHIP

Founded in 2008, ESJ Capital Partners is a vertically-integrated owner, operator and developer of institutional quality office properties and education-focused real estate. ESJ's principals possess a combined 100+ years of experience and have completed over 11.3 million square feet of office transactions primarily located in the Southeastern United States.

WESTTECH BUSINESS PARK - TALBOT

KENNETH FELLOWS
kfellows@klnb.com
301-222-0210

ROBERT PUGH
rpugh@klnb.com
301-222-0211

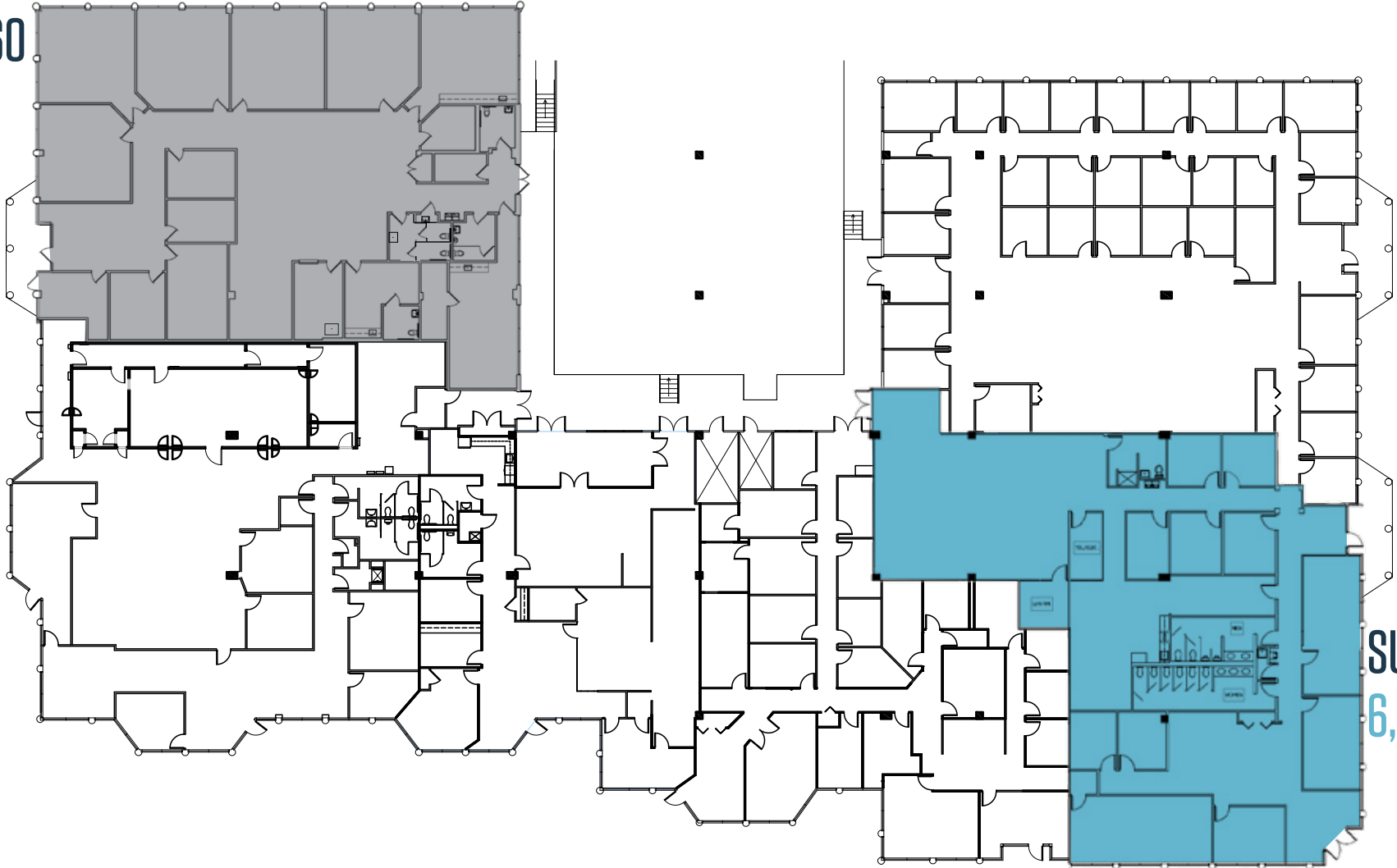
KEIRY MARTINEZ
kmartinez@klnb.com
703-334-5629



SUITE 160

7,314 SF

Available
07/01/2025



SUITE 145
6,670 SF

FLOOR PLAN

WESTECH BUSINESS PARK - TALBOT

KENNETH FELLOWS
kfellows@klnb.com
301-222-0210

ROBERT PUGH
rpugh@klnb.com
301-222-0211

KEIRY MARTINEZ
kmartinez@klnb.com
703-334-5629





WESTECH BUSINESS PARK - TALBOT

12120 Plum Orchard Dr, Silver Spring, MD 20904

CONTACT

KENNETH FELLOWS
kfellows@klnb.com
301-222-0210

ROBERT PUGH
rpugh@klnb.com
301-222-0211

KEIRY MARTINEZ
kmartinez@klnb.com
703-334-5629

12435 Park Potomac Ave, Suite 250,
Rockville, MD, 20854

klnb.com

VISIT PROPERTY WEBSITE



While we have no reason to doubt the accuracy of any of the information supplied, we cannot, and do not, guarantee its accuracy. All information should be independently verified prior to a purchase or lease of the property. We are not responsible for errors, omissions, misuse, or misinterpretation of information contained herein and make no warranty of any kind, express or implied, with respect to the property or any other matters.