



12712 ROCK CREEK MILL RD  
Rockville, MD 20852



**FLEX FOR LEASE**

KENNETH E. FELLOWS  
kfellows@klnb.com  
301-222-0210

ROBERT PUGH  
rpugh@klnb.com  
301-222-0211

KEIRY MARTINEZ  
kmartinez@klnb.com  
703-334-5629

[klnb.com](http://klnb.com)





# 12712 ROCK CREEK MILL RD

KENNETH E. FELLOWS  
 kfellows@klnb.com  
 301-222-0210

ROBERT PUGH  
 rpugh@klnb.com  
 301-222-0211

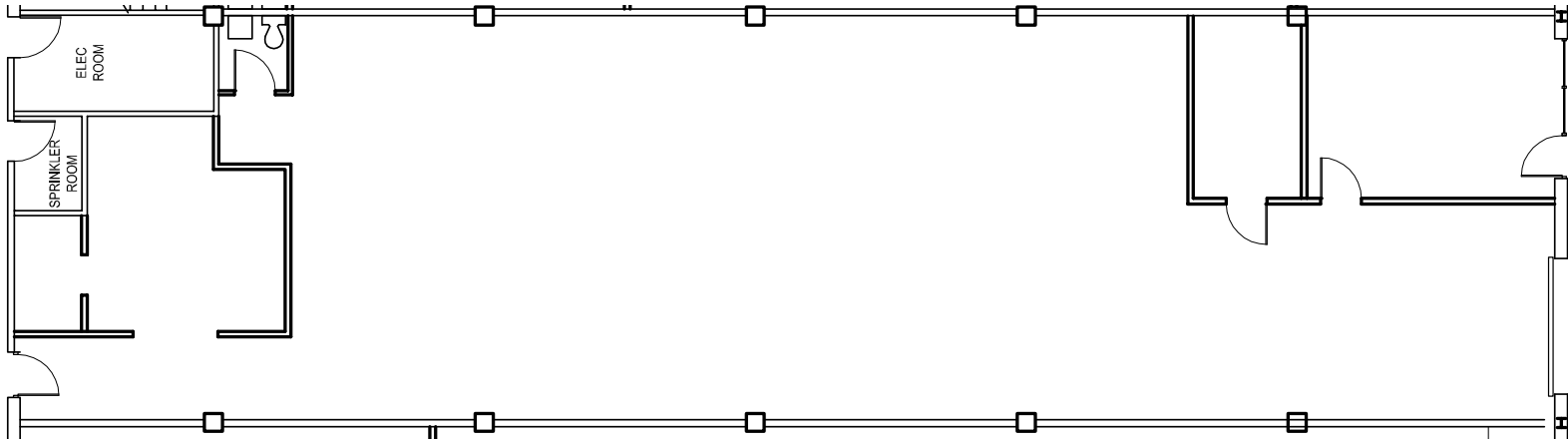
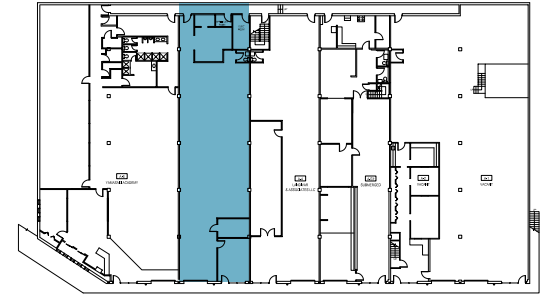
KEIRY MARTINEZ  
 kmartinez@klnb.com  
 703-334-5629







12712 ROCK CREEK MILL RD  
Rockville, MD 20852



**BUILDING A A-5**  
**3,360 SF**

**FLOOR PLAN**

12712 ROCK CREEK MILL RD

KENNETH E. FELLOWS  
kfellows@klnb.com  
301-222-0210

ROBERT PUGH  
rpugh@klnb.com  
301-222-0211

KEIRY MARTINEZ  
kmartinez@klnb.com  
703-334-5629





**12712 ROCK CREEK MILL RD**  
Rockville, MD 20852

## CONTACT

KENNETH E. FELLOWS  
kfellows@klnb.com  
301-222-0210

ROBERT PUGH  
rpugh@klnb.com  
301-222-0211

KEIRY MARTINEZ  
kmartinez@klnb.com  
703-334-5629

12435 Park Potomac Ave, Suite 250,  
Rockville, MD, 20854

**klnb.com**

VISIT PROPERTY WEBSITE



While we have no reason to doubt the accuracy of any of the information supplied, we cannot, and do not, guarantee its accuracy. All information should be independently verified prior to a purchase or lease of the property. We are not responsible for errors, omissions, misuse, or misinterpretation of information contained herein and make no warranty of any kind, express or implied, with respect to the property or any other matters.