



Existing Functional Lab

Existing Lab Space

PROPERTY HIGHLIGHTS

- Year Built: 1968/1999
- Building Class: B
- Building Height: 2 stories
- Parking: 60 free surface
- Building Size : 17,800 SF



Located off Route-355, across from Twinbrook Metro Station, and within walking distance to Congressional Plaza

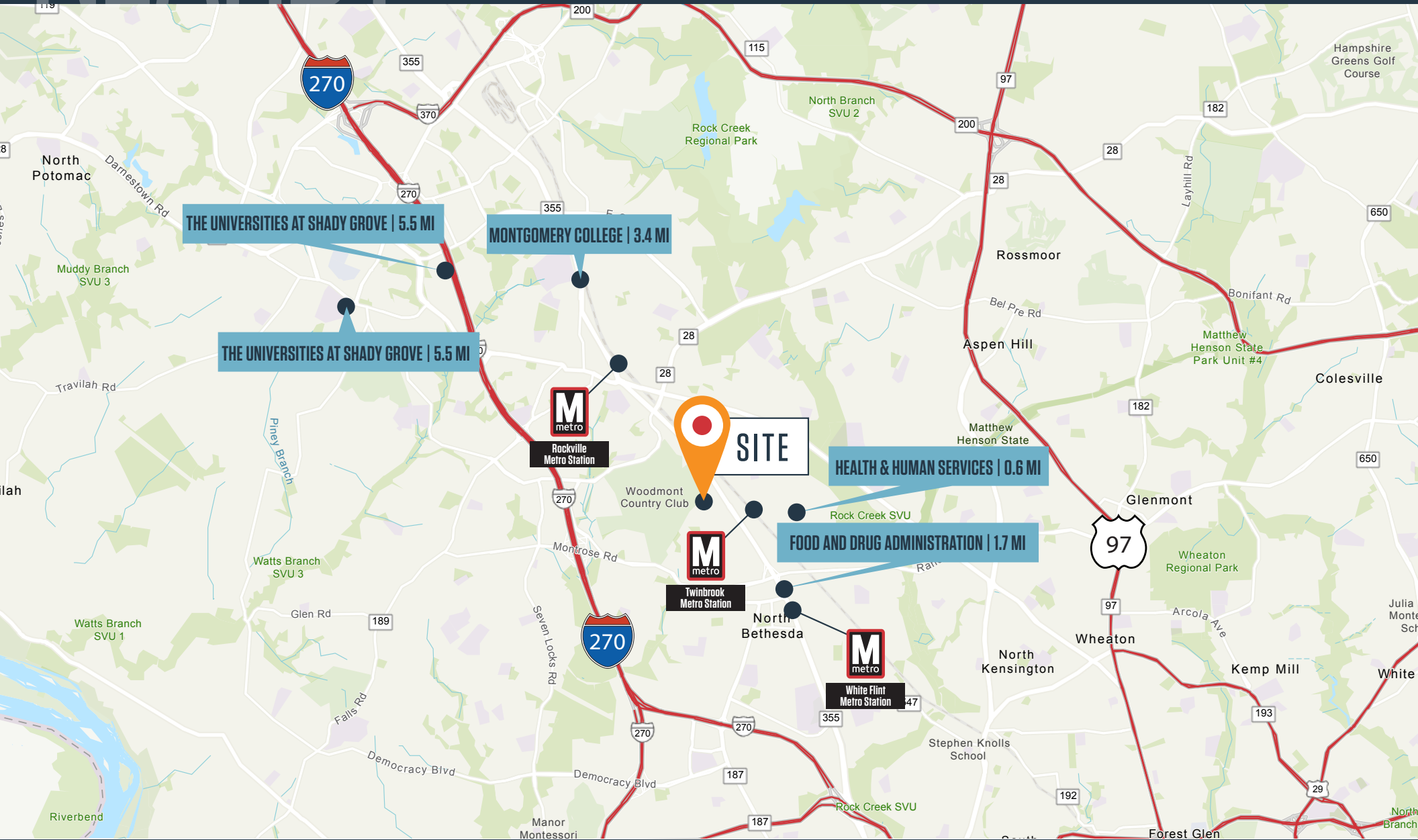
Building Ammenities:

- 175 kW Back Up Generator
- Biological Safety Cabinet
- Cold Box
- Conference Room with divider
- Chemical Fume Hood Flammable Cabinet
- Autoclaves
- Softwater System for Steam Boiler

NEARBY

1530 EAST JEFFERSON ST

1530 E JEFFERSON ST ROCKVILLE, MD 20852



KENNETH FELLOWS

kfellows@klnb.com | 301-222-0210

ROBERT PUGH

rpugh@klnb.com | 301-222-0211

KEIRY MARTINEZ

kmartinez@klnb.com | 703-334-5629

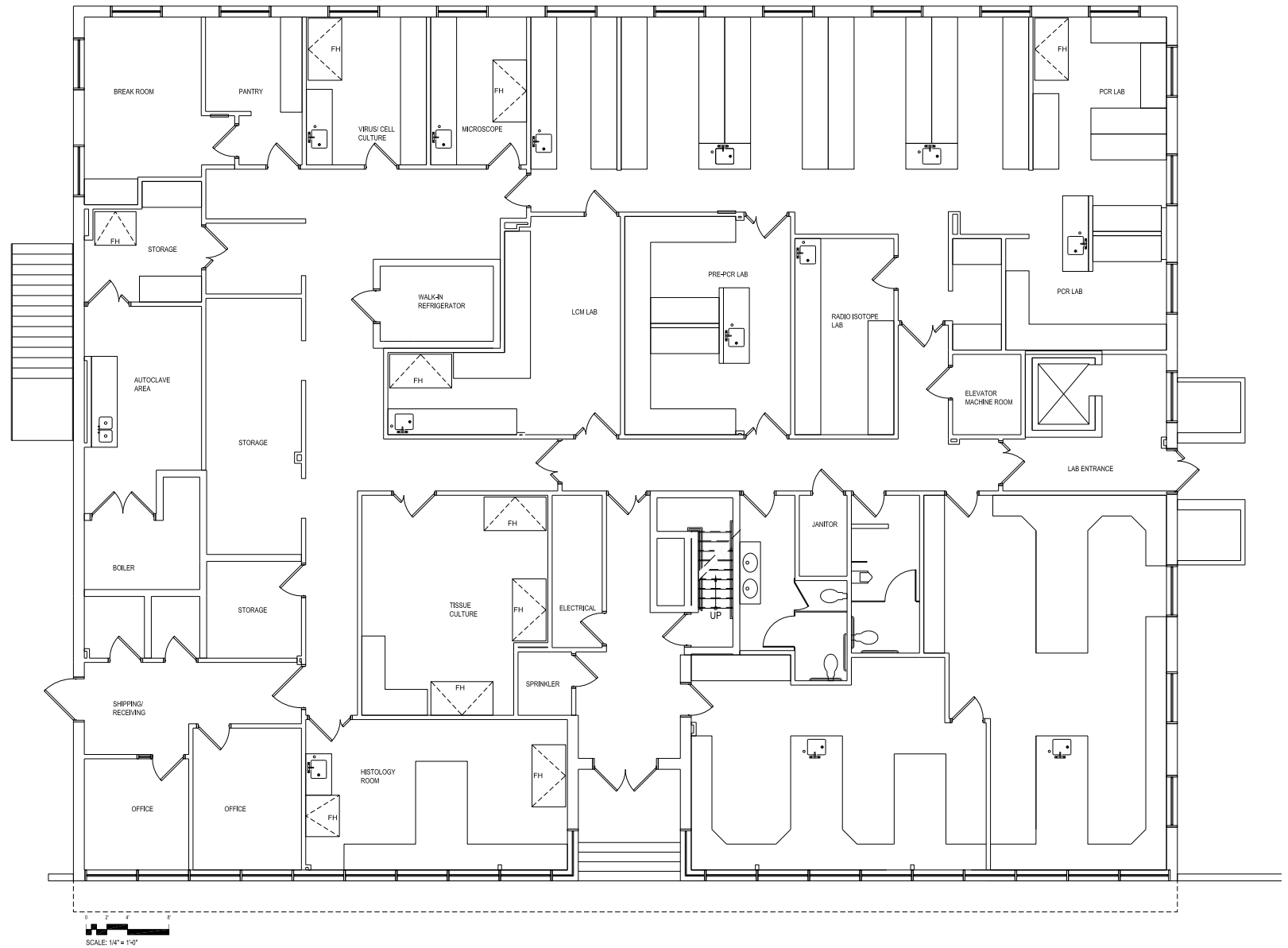


FLOOR PLAN

1530 EAST JEFFERSON ST

1530 E JEFFERSON ST ROCKVILLE, MD 20852

FIRST FLOOR
8,900 SF



KENNETH FELLOWS
kfellows@klnb.com | 301-222-0210

ROBERT PUGH
rpugh@klnb.com | 301-222-0211

KEIRY MARTINEZ
kmartinez@klnb.com | 703-334-5629

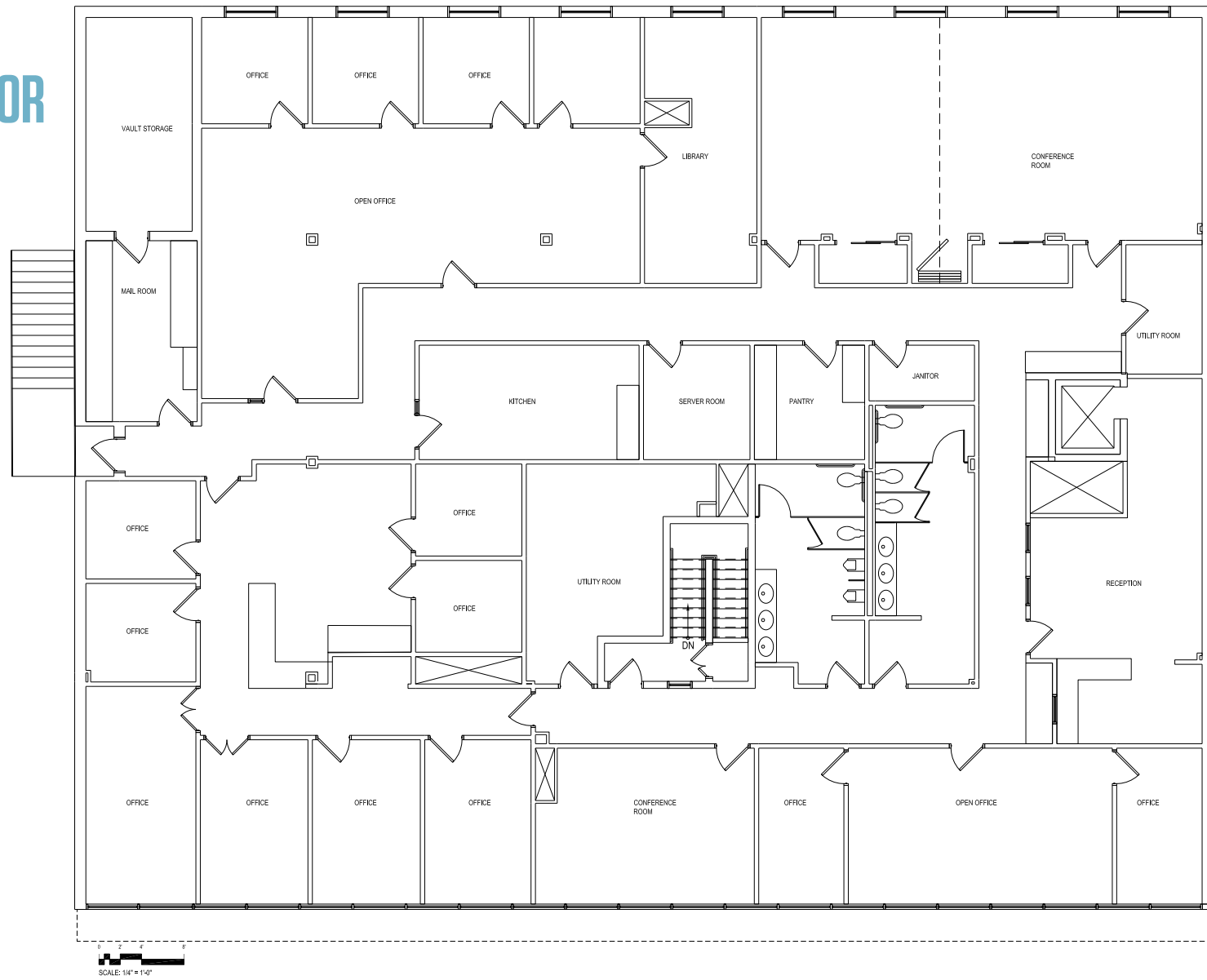


FLOOR PLAN

1530 EAST JEFFERSON ST

1530 E JEFFERSON ST ROCKVILLE, MD 20852

SECOND FLOOR
8,900 SF





1530 EAST JEFFERSON ST

1530 E JEFFERSON ST ROCKVILLE, MD 20852

FOR MORE INFORMATION, PLEASE CONTACT:

KENNETH FELLOWS

kfellows@klnb.com
301-222-0210

ROBERT PUGH

rpugh@klnb.com
301-222-0211

KEIRY MARTINEZ

kmartinez@klnb.com
703-334-5629

12435 Park Potomac Ave, Suite 250, Rockville, MD, 20854

.....

klnb.com

 facebook.com/KLNBCRE

 [@KLNBCRE](https://twitter.com/KLNBCRE)

 linkedin.com/company/klnb

 instagram.com/klnbcre

CLICK TO VIEW PROPERTY WEBSITE

While we have no reason to doubt the accuracy of any of the information supplied, we cannot, and do not, guarantee its accuracy. All information should be independently verified prior to a purchase or lease of the property. We are not responsible for errors, omissions, misuse, or misinterpretation of information contained herein and make no warranty of any kind, express or implied, with respect to the property or any other matters.