

6151 EXECUTIVE BLVD

6151 Executive Blvd Rockville, MD 20852
Montgomery County



OFFICE CONDO FOR SALE

BUILDING INFORMATION

- 2 floors
- \$330 per SF
- 2,999 SF
- \$989,670 sale price

KENNETH E. FELLOWS
kfellows@klnb.com
301-222-0210

ROBERT PUGH
rpugh@klnb.com
301-222-0211

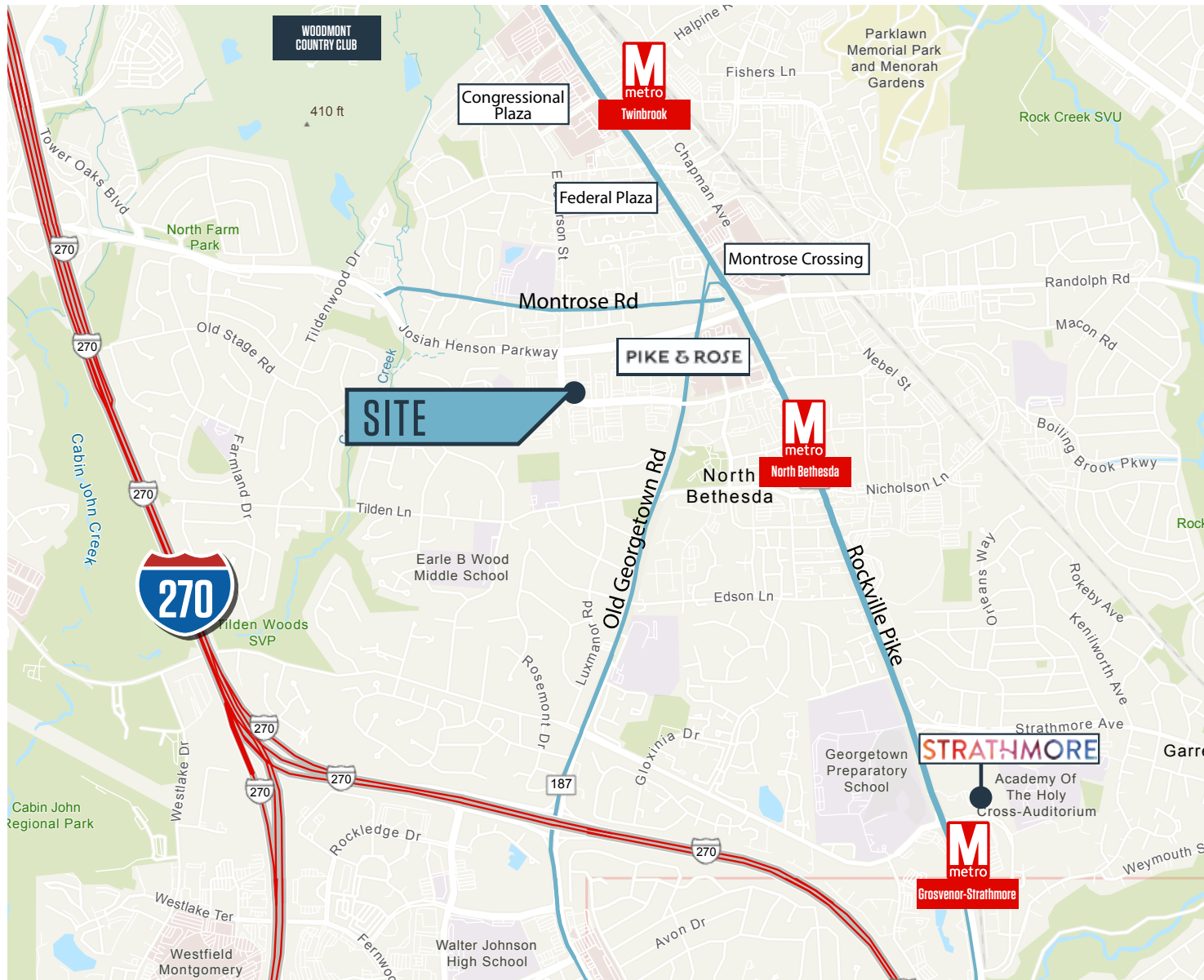
KEIRY MARTINEZ
kmartinez@klnb.com
703-334-5629

2273 Research Blvd, Suite 150
Rockville, MD 20850
klnb.com

klnb

6151 EXECUTIVE BLVD

6151 Executive Blvd Rockville, MD 20852
Montgomery County



Distance to Major Roads

I-270	1.7 miles
Old Georgetown	0.4 miles

Commuter Rail

North Bethesda	0.9 miles
Twinbrook	1.3 miles
Grosvenor-Strathmore	2.3 miles
MARC Station	2.7 miles

Airport

Ronald Reagan Washington	23.4 miles
Dulles International	26.4 miles
Baltimore/Washington International	36.5 miles

Distance to Cities

Washington, DC	8.4 miles
----------------	-----------

KENNETH E. FELLOWS
kfellows@klnb.com
301-222-0210

ROBERT PUGH
rpugh@klnb.com
301-222-0211

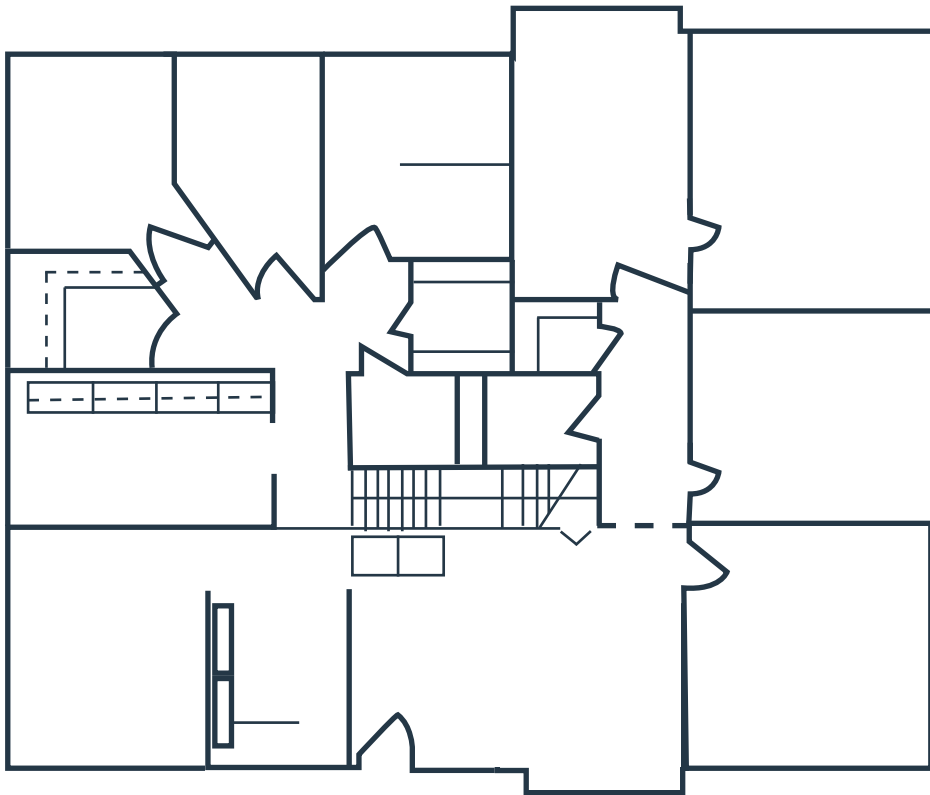
KEIRY MARTINEZ
kmartinez@klnb.com
703-334-5629

2273 Research Blvd, Suite 150
Rockville, MD 20850
klnb.com

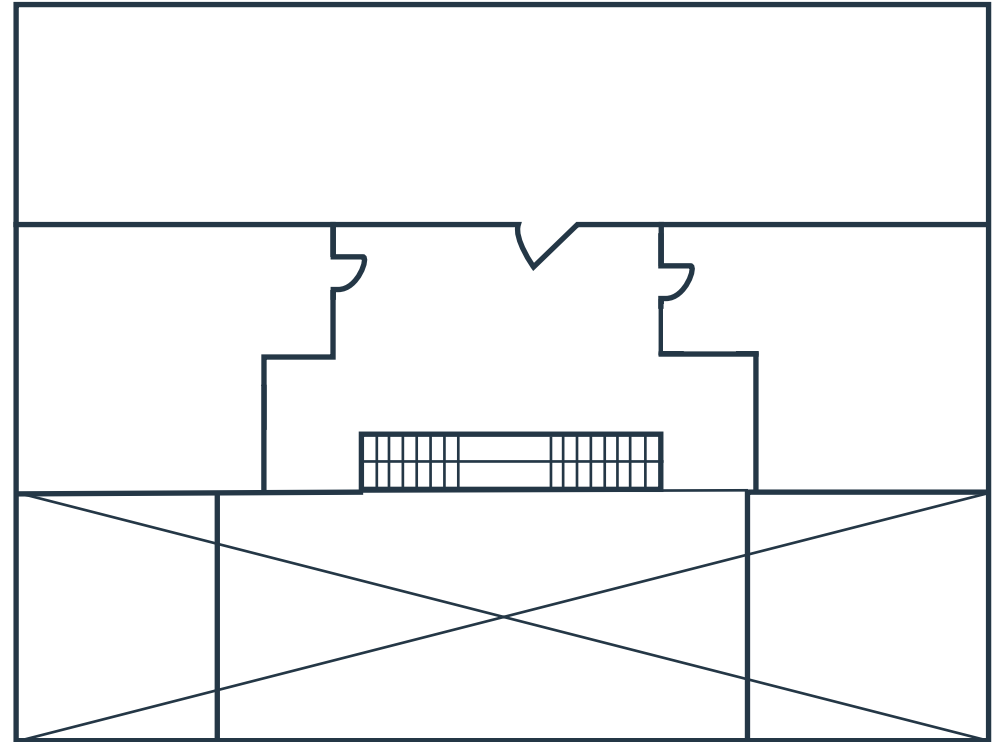


6151 EXECUTIVE BLVD

6151 Executive Blvd Rockville, MD 20852
Montgomery County



First Floor



Second Floor

SITE PLAN

KENNETH E. FELLOWS
kfellows@klnb.com
301-222-0210

ROBERT PUGH
rpugh@klnb.com
301-222-0211

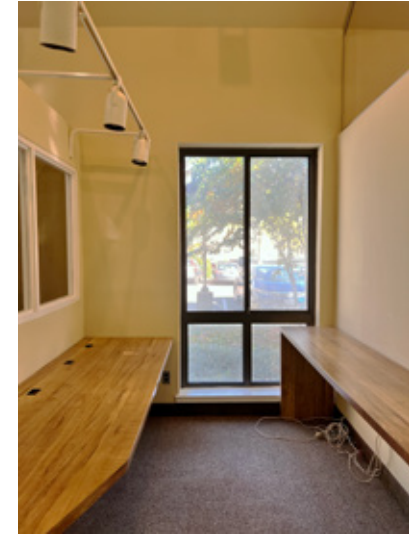
KEIRY MARTINEZ
kmartinez@klnb.com
703-334-5629

2273 Research Blvd, Suite 150
Rockville, MD 20850
klnb.com



6151 EXECUTIVE BLVD

6151 Executive Blvd Rockville, MD 20852
Montgomery County



KENNETH E. FELLOWS
kfellows@klnb.com
301-222-0210

ROBERT PUGH
rpugh@klnb.com
301-222-0211

KEIRY MARTINEZ
kmartinez@klnb.com
703-334-5629

2273 Research Blvd, Suite 150
Rockville, MD 20850
klnb.com



6151 EXECUTIVE BLVD

6151 Executive Blvd Rockville, MD 20852
Montgomery County

CLICK TO VIEW PROPERTY WEBSITE

For More Information, Please Contact:

KENNETH E. FELLOWS
kfellows@klnb.com
301-222-0210

ROBERT PUGH
rpugh@klnb.com
301-222-0211

KEIRY MARTINEZ
kmartinez@klnb.com
703-334-5629

12435 Park Potomac Ave, Suite 250,
Rockville, MD, 20854

klnb.com



[instagram.com/klnbcre](https://www.instagram.com/klnbcre)



[linkedin.com/company/klnb](https://www.linkedin.com/company/klnb)



[facebook.com/KLNBCRE](https://www.facebook.com/KLNBCRE)

While we have no reason to doubt the accuracy of any of the information supplied, we cannot, and do not, guarantee its accuracy. All information should be independently verified prior to a purchase or lease of the property. We are not responsible for errors, omissions, misuse, or misinterpretation of information contained herein and make no warranty of any kind, express or implied, with respect to the property or any other matters.