



NEARBY RETAILERS



RETAIL FOR LEASE

- .75 acre pad with all offsite improvements already completed – Available for Lease
- The site is located at the signalized main entrance to Walmart. It features access from both northbound and southbound traffic on S Salisbury Blvd (Rt.13).
- Located on Rt. 13, a major commuter artery connecting communities from the south to Downtown Salisbury, and Salisbury University (7k + students).
- Fruitland is a regional shopping and dining destination for the surrounding trade area.
- Zoning: C-4 [Link to Zoning Code]

JOE MEKULSKI

jmekulski@klnb.com | 443-632-1343

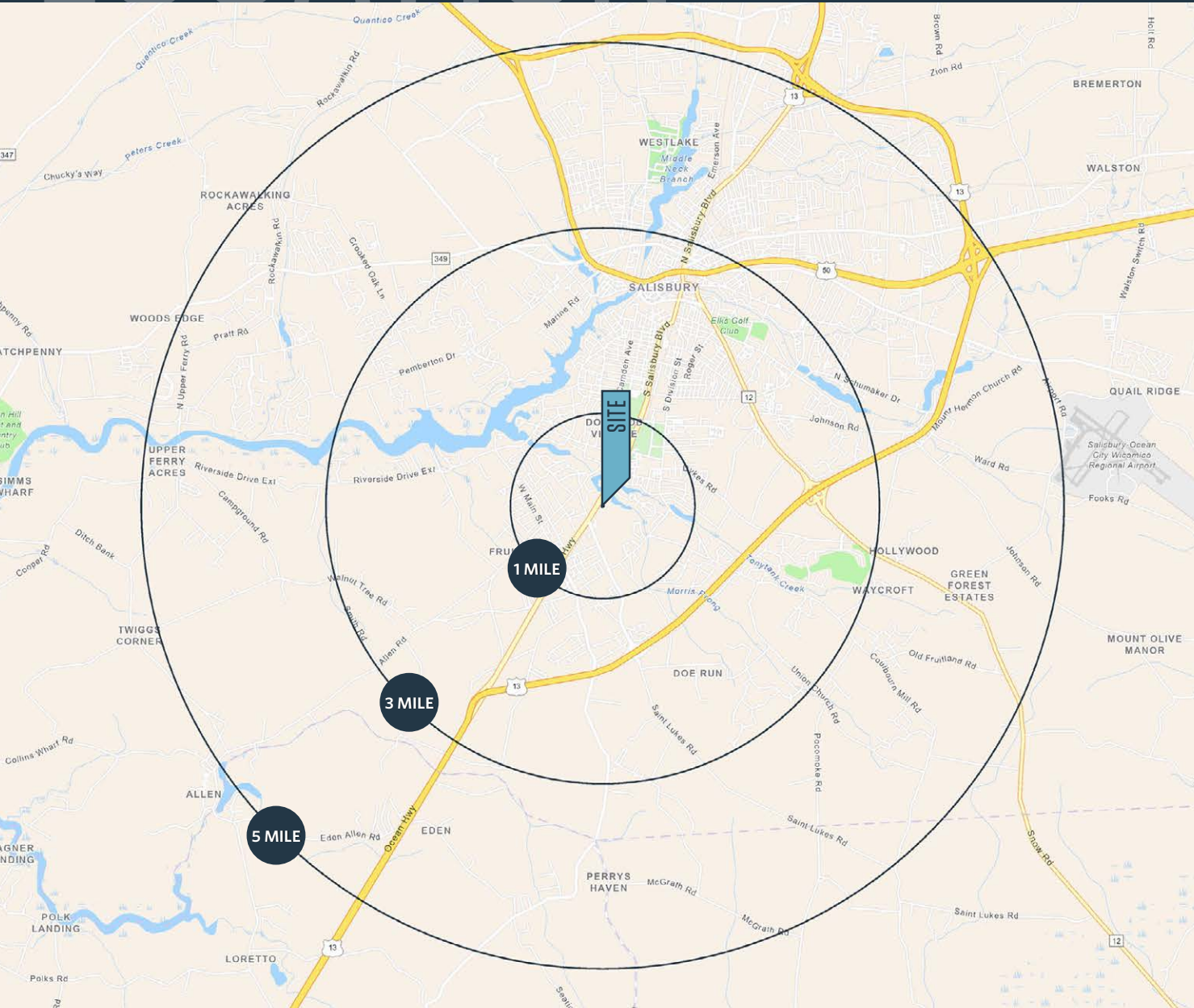
RYAN MINNEHAN

rminnehan@klnb.com | 443-632-2088

LOCATION

415 N FRUITLAND BLVD

FRUITLAND, MD 21826, WICOMICO COUNTY



DEMOGRAPHICS | 2024:

	1-MILE	3-MILE	5-MILE
Population	7,996	40,648	70,767
Daytime Population	11,136	48,345	73,422
Households	2,312	15,591	27,081
Average HH Income	\$93,409	\$84,614	\$88,673

[CLICK TO DOWNLOAD DEMOGRAPHIC REPORT](#)

TRAFFIC COUNTS | 2023:

N Fruitland Blvd	21,690 ADT
E Cedar Lane	8,252 ADT

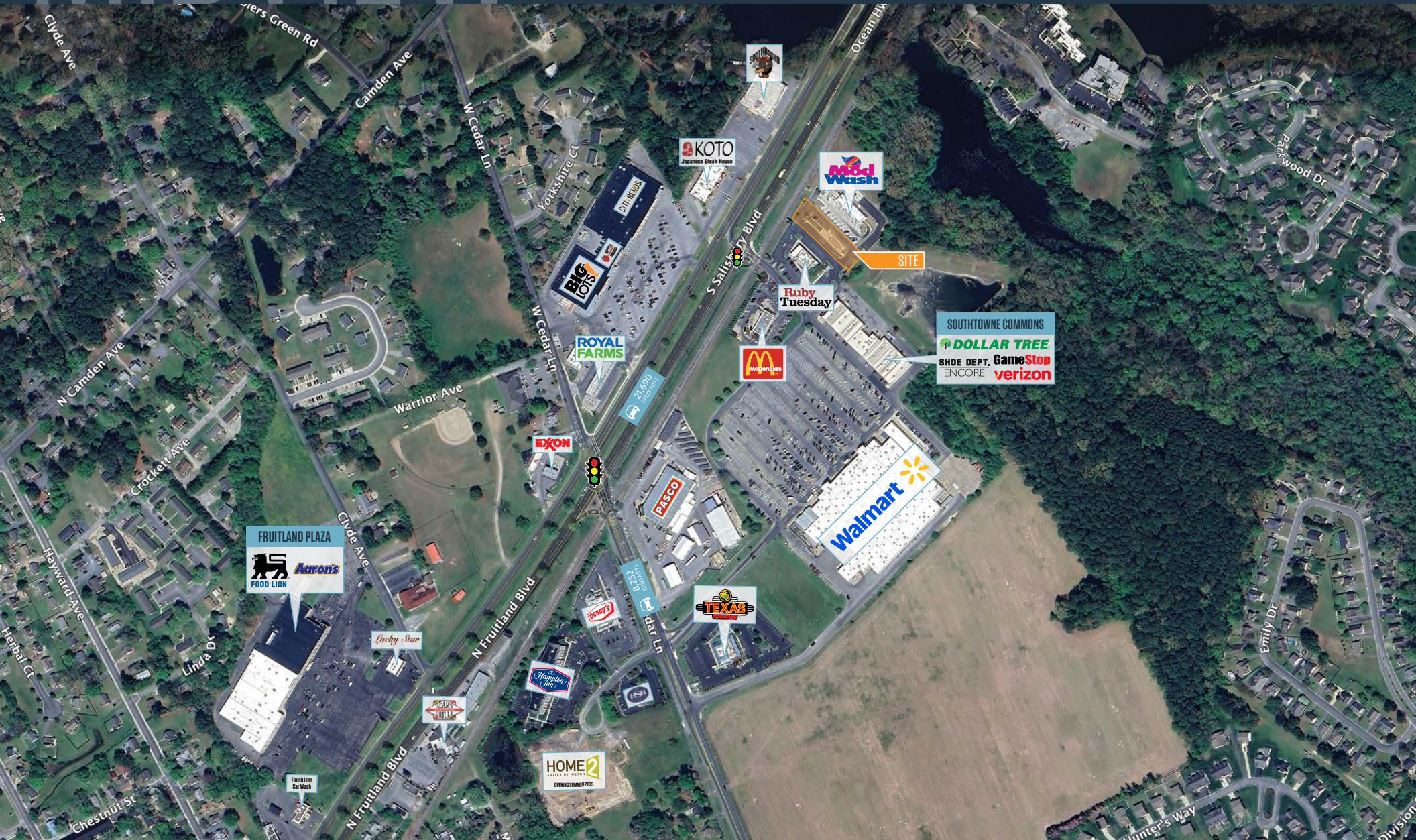
JOE MEKULSKI

jmekulski@klnb.com | 443-632-1343

RYAN MINNEHAN

rminnehan@klnb.com | 443-632-2088





JOE MEKULSKI

jmekulski@klnb.com | 443-632-1343

RYAN MINNEHAN

rminnehan@klnb.com | 443-632-2088

CLOSE UP

415 N FRUITLAND BLVD

FRUITLAND, MD 21826, WICOMICO COUNTY



21,690
[2023 ADT]

SITE

Ruby Tuesday

McDonald's

Mod Wash

SOUTHTOWNE COMMONS
Walmart
DOLLAR TREE
SHOE DEPT. ENCORE
GameStop
verizon

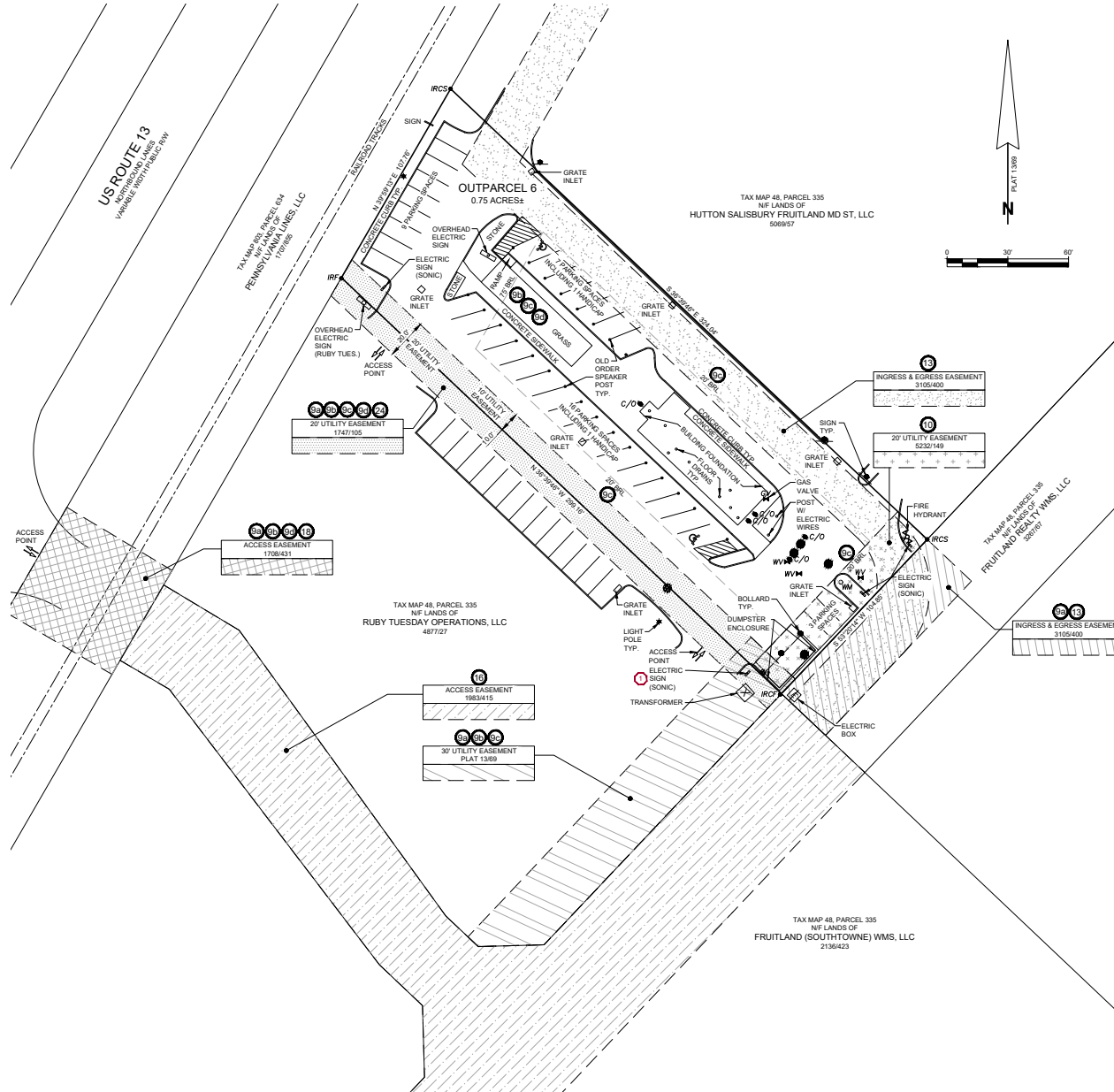
JOE MEKULSKI
jmekulski@klnb.com | 443-632-1343

RYAN MINNEHAN
rminnehan@klnb.com | 443-632-2088



415 N FRUITLAND BLVD

FRUITLAND, MD 21826, WICOMICO COUNTY



JOE MEKULSKI

jmekulski@klnb.com | 443-632-1343

RYAN MINNEHAN

rminnehan@klnb.com | 443-632-2088



415 N FRUITLAND BLVD

FRUITLAND, MD 21826, WICOMICO COUNTY

FOR MORE INFORMATION, PLEASE CONTACT:

JOE MEKULSKI

jmekulski@klnb.com

443-632-1343

RYAN MINNEHAN

rminnehan@klnb.com

443-632-2088

100 West Road, Suite 505, Towson, MD 21204

.....

klnb.com



[instagram.com/klnbcre](https://www.instagram.com/klnbcre)



[linkedin.com/company/klnb](https://www.linkedin.com/company/klnb)



[facebook.com/KLNBCRE](https://www.facebook.com/KLNBCRE)

[CLICK TO VIEW PROPERTY WEBSITE](#)

While we have no reason to doubt the accuracy of any of the information supplied, we cannot, and do not, guarantee its accuracy. All information should be independently verified prior to a purchase or lease of the property. We are not responsible for errors, omissions, misuse, or misinterpretation of information contained herein and make no warranty of any kind, express or implied, with respect to the property or any other matters.