



## AVAILABILITY

Suite: 550

RSF: 5,113

Term: December 31, 2026

Rate: \$25.00/SF

## PROPERTY HIGHLIGHTS

- Tenant Lounge
- Conference Center
- Private Telephone Booths
- Catering Pantry
- Fitness Center
- Yoga Studio
- Indoor/Outdoor Terrace
- Wet Bar & Kitchen
- Covered Garage Parking

**TEDDY NEW**

tnew@klnb.com | 301-785-9568

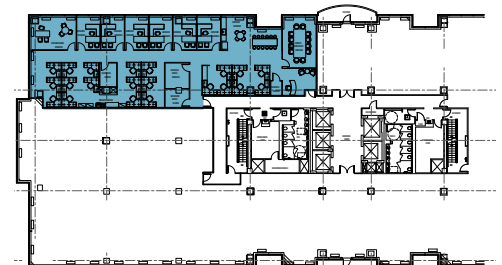
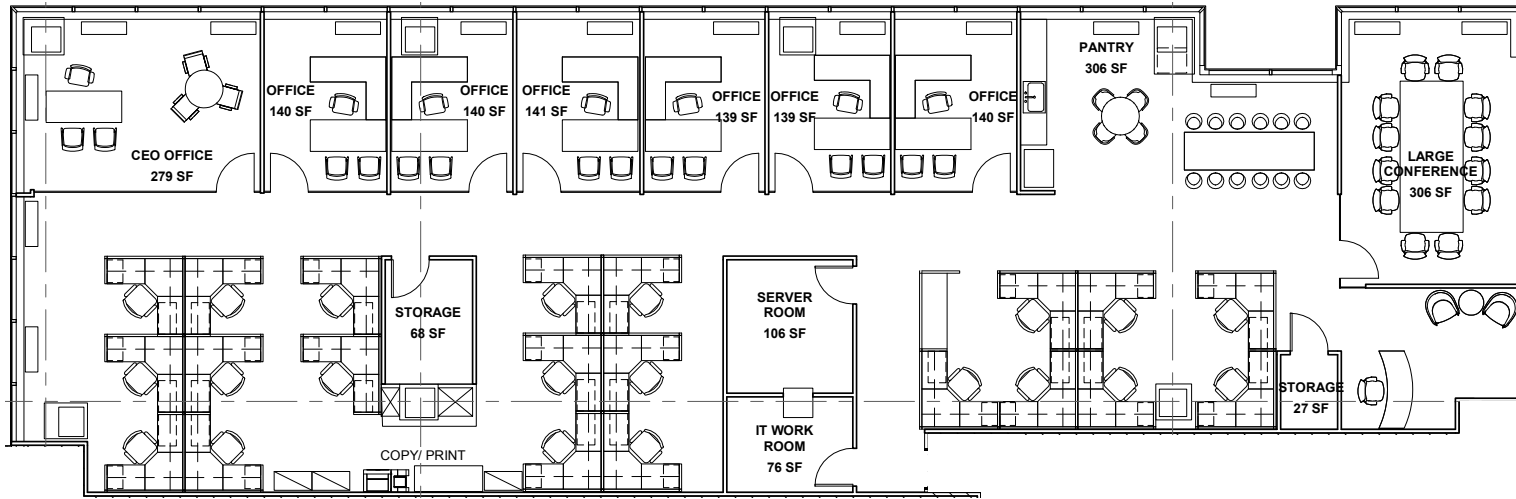
**RASHIDA AKHTER**

rakhter@klnb.com | 301-222-0019

**MARC BALAMACI**

mbalamaci@klnb.com | 703-334-5603

## SUITE 550 5,113 SF



**TEDDY NEW**

tnew@klnb.com | 301-785-9568

**RASHIDA AKHTER**

rakhter@klnb.com | 301-222-0019

**MARC BALAMACI**

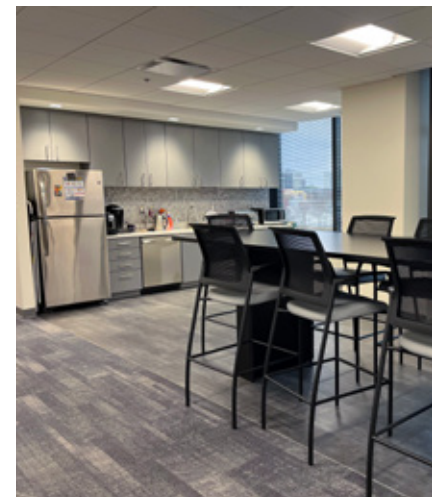
mbalamaci@klnb.com | 703-334-5603



# PHOTOS

## 6116 EXECUTIVE BLVD

6116 EXECUTIVE BLVD NORTH BETHESDA, MD 20855



[CLICK TO VIEW VIRTUAL TOUR](#)

**TEDDY NEW**

tnew@klnb.com | 301-785-9568

**RASHIDA AKHTER**

rakhter@klnb.com | 301-222-0019

**MARC BALAMACI**

mbalamaci@klnb.com | 703-334-5603

**klnb**



## LOCATION & ACCESS

- Walk to and from Pike & Rose and White Flint Metro
- Minutes from I-270 and the Capital Beltway
- Walking distance from 4 hotels and 33 restaurants
- Capital BikeShare Facility on-site

## FLEXIBILITY & FUNCTIONALITY

- 3-Level Underground Garage with Secured,
- 3.2/1,000 SF Parking Ratio and Visitor Parking
- Modernized Restrooms and Common Areas
- Most Columns Spaced 30' x 30', Allowing for Efficient Floorplans
- New Elevator System
- Typical Floor Plate Approximately 28,800 SF

## CONFERENCE CENTER

- 3 Meeting Spaces (for 15, 38, and 65 Guests)
- Wi-Fi Connectivity
- Multiple USB Charging Stations
- Catering Pantry
- Private Telephone Booth
- Smart TVs with HDMI Ports
- Breakout, Lounge, and Meeting Spaces are all reservable

## WELLNESS CENTER

- Peloton Bikes, Treadmills, and Weightlifting Equipment
- Yoga Studio
- Virtual Classes on Touch Screen TV
- Locker Rooms
- Private Showers
- Secure, 24-hour Key Card Access
- Separate Exterior Entrance

## TERRACE

- Easily Converts to One Large Indoor/Outdoor Space
- Climate Controlled for Three-Season Comfort
- Wet Bar and Kitchen
- Smart TV with HDMI Ports
- Wi-Fi Connectivity
- Multiple USB Charging Stations
- Exclusively for Tenants
- Reservable for Tenant Events



# 6116 EXECUTIVE BLVD

6116 EXECUTIVE BLVD NORTH BETHESDA, MD 20855

## FOR MORE INFORMATION, PLEASE CONTACT:

### **TEDDY NEW**

tnew@klnb.com  
301-785-9568

### **RASHIDA AKHTER**

rakhter@klnb.com  
301-222-0019

### **MARC BALAMACI**

mbalamaci@klnb.com  
703-334-5603

12435 Park Potomac Ave, Suite 250, Rockville, MD, 20854

.....  
**klnb.com**



[instagram.com/klnbcre](https://www.instagram.com/klnbcre)



[linkedin.com/company/klnb](https://www.linkedin.com/company/klnb)



[facebook.com/KLNBCRE](https://www.facebook.com/KLNBCRE)

**CLICK TO VIEW PROPERTY WEBSITE**

While we have no reason to doubt the accuracy of any of the information supplied, we cannot, and do not, guarantee its accuracy. All information should be independently verified prior to a purchase or lease of the property. We are not responsible for errors, omissions, misuse, or misinterpretation of information contained herein and make no warranty of any kind, express or implied, with respect to the property or any other matters.