



OFFICE SPACE FOR LEASE

KEN FELLOWS
kfellows@kl**nb**.com | 301-222-0210

ROB PUGH
rpugh@kl**nb**.com | 301-222-0211

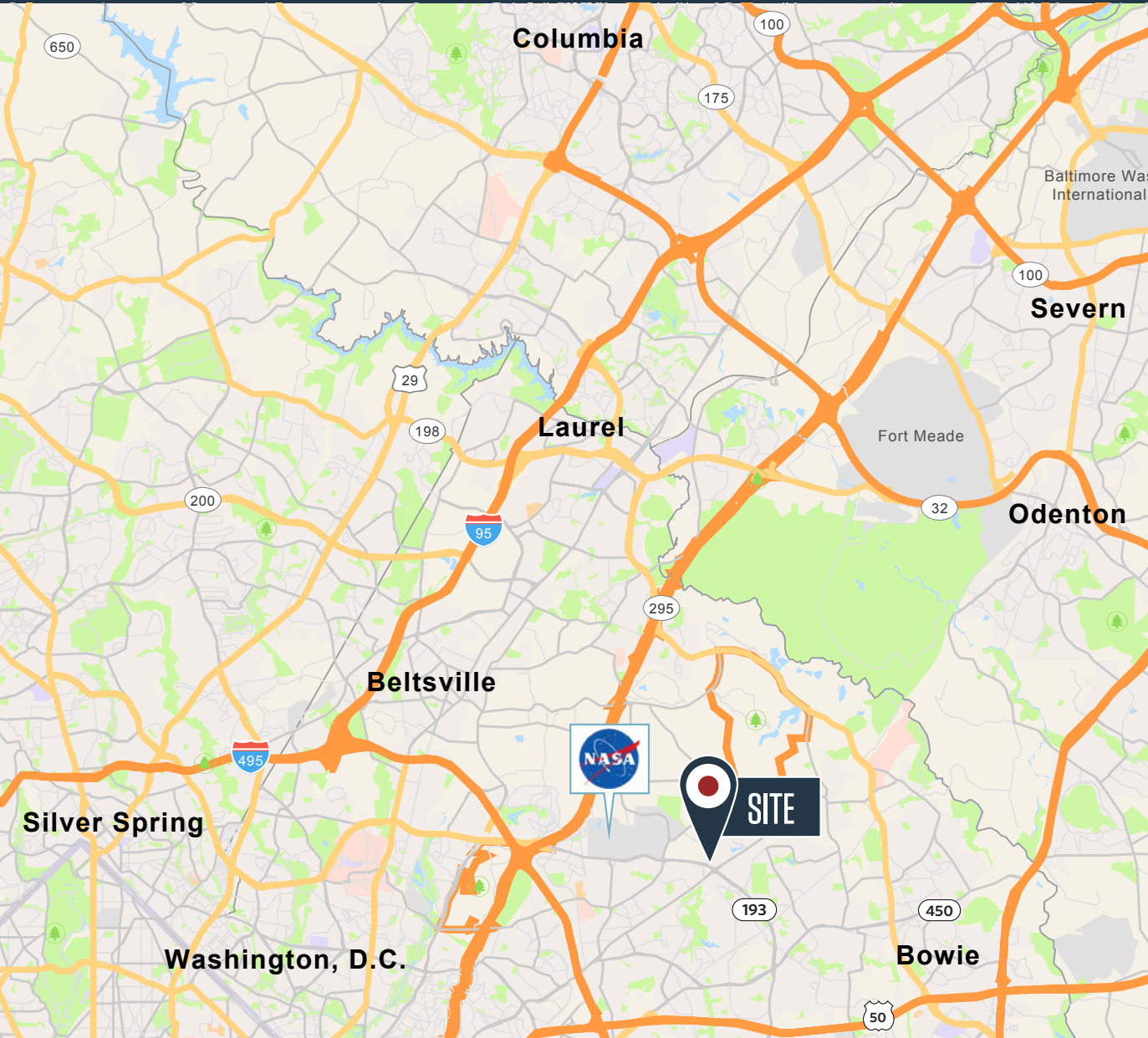
KEIRY MARTINEZ
kmartinez@kl**nb**.com | 703-334-5629



LOCATION

MARYLAND CORPORATE CENTER

7375 EXECUTIVE PLACE, LANHAM, MD 20706, PRINCE GEORGE'S COUNTY



AVAILABLE SPACE

Suite 120: 1,625 SF

BUILDING FEATURES

- Lease Rate: \$18.95 FS
- 65,000 rentable square feet
- 4 stories
- 3.45 acres
- Zoned I-1
- 1 mile from NASA / Goddard Space Flight Center
- 3.5 parking spaces per 1,000 square feet
- Transportation to Greenbelt Metro & PG County bus service (TheBus)
- Easy access to Baltimore-Washington Parkway (MD Rt. 295) and Capital Beltway (I-495)
- On-site shared conference center

KEN FELLOWS

kfellows@klnb.com | 301-222-0210

ROB PUGH

rpugh@klnb.com | 301-222-0211

KEIRY MARTINEZ

kmartinez@klnb.com | 703-334-5629



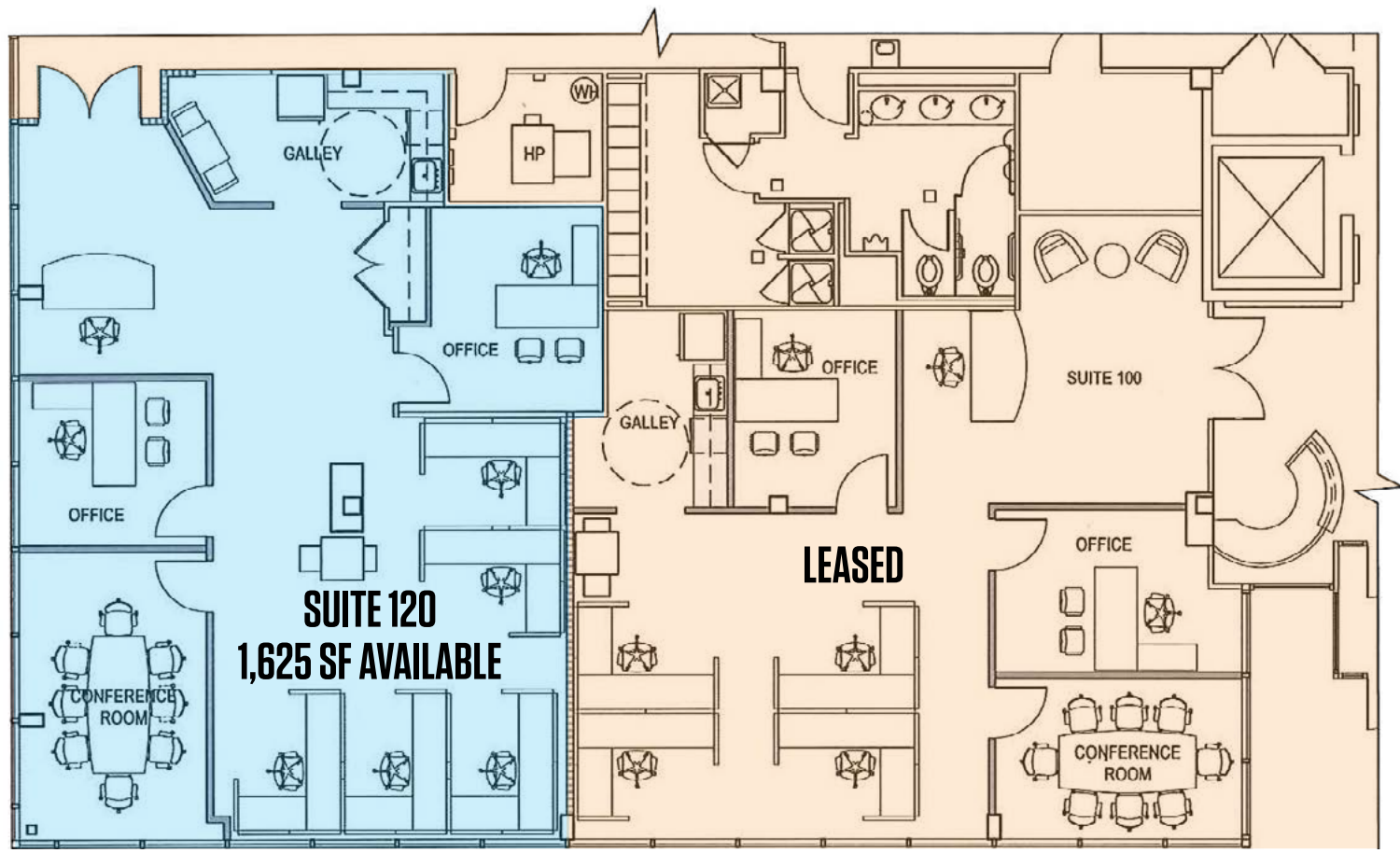
klnb.com

FLOOR PLAN

MARYLAND CORPORATE CENTER

7375 EXECUTIVE PLACE, LANHAM, MD 20706, PRINCE GEORGE'S COUNTY

1ST FLOOR PLAN



KEN FELLOWS
kfellows@klnb.com | 301-222-0210

ROB PUGH
rpugh@klnb.com | 301-222-0211

KEIRY MARTINEZ
kmartinez@klnb.com | 703-334-5629

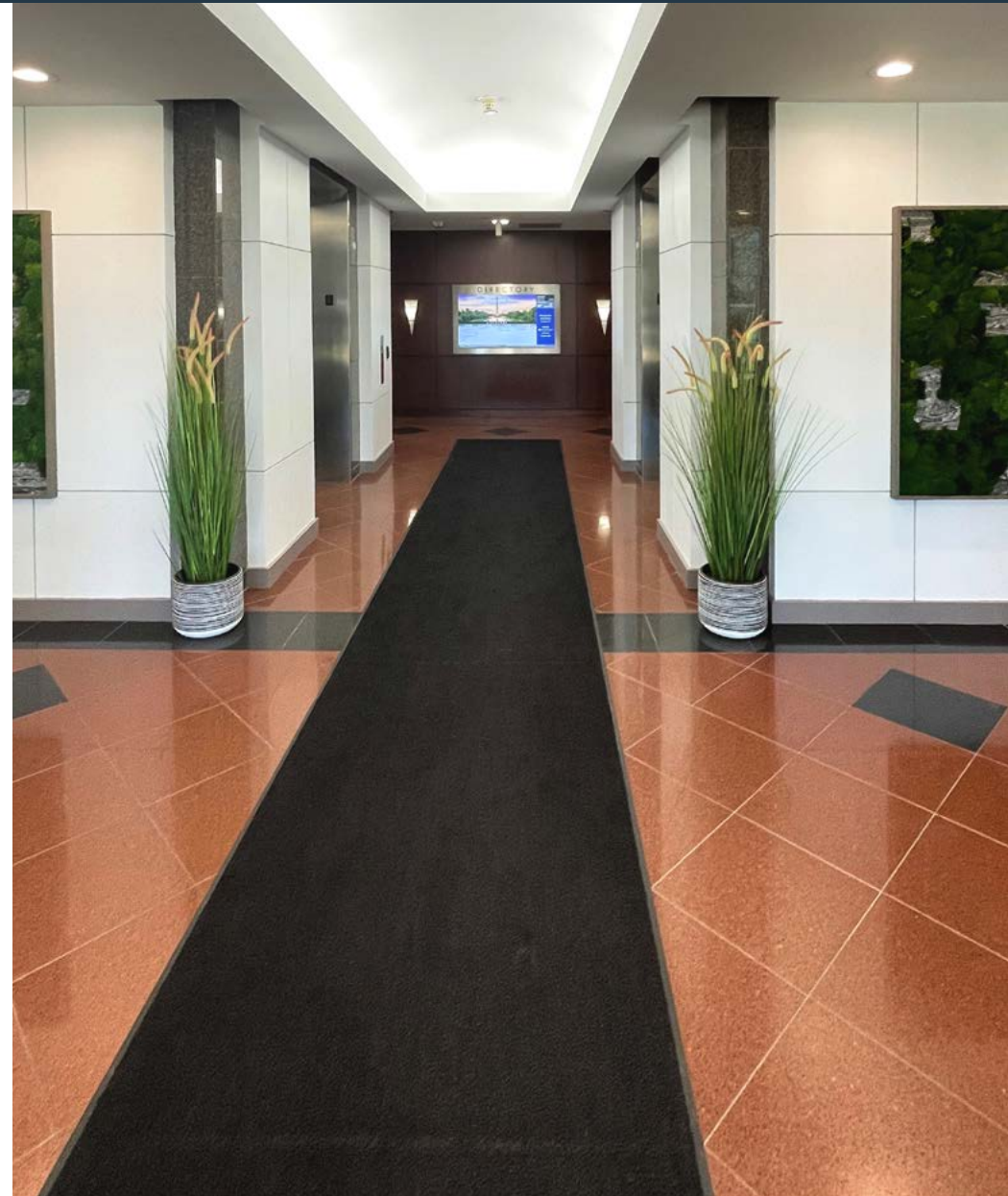


klnb.com

PHOTOS

MARYLAND CORPORATE CENTER

7375 EXECUTIVE PLACE, LANHAM, MD 20706, PRINCE GEORGE'S COUNTY



KEN FELLOWS

kfellows@klnb.com | 301-222-0210

ROB PUGH

rpugh@klnb.com | 301-222-0211

KEIRY MARTINEZ

kmartinez@klnb.com | 703-334-5629



klnb.com

FOR MORE INFORMATION, PLEASE CONTACT:

KEN FELLOWS

kfellows@klnb.com
301-222-0210

ROB PUGH

rpugh@klnb.com
301-222-0211

KEIRY MARTINEZ

kmartinez@klnb.com
703-334-5629

1130 Connecticut Ave, NW, Suite 600, Washington, DC 20036

.....

klnb.com



[instagram.com/klnbcre](https://www.instagram.com/klnbcre)



[linkedin.com/company/klnb](https://www.linkedin.com/company/klnb)



[facebook.com/KLNBCRE](https://www.facebook.com/KLNBCRE)

CLICK TO VIEW PROPERTY WEBSITE