



# MARYLAND CORPORATE CENTER

7404 EXECUTIVE PLACE, LANHAM, MD 20706, PRINCE GEORGE'S COUNTY



**NAI klnb**  
 JEFF GROVES 443-574-1435    AARON CARROLL 443-574-1430  
**OFFICE FOR LEASE**  
 klnb.com    410-290-1110

PRIVATE PROPERTY  
 NO TOLU OFFS OR CHANGING ADDRESS

OFFICE SPACE FOR LEASE

**KEN FELLOWS**  
 kfellows@klnb.com | 301-222-0210

**ROB PUGH**  
 rpugh@klnb.com | 301-222-0211

**KEIRY MARTINEZ**  
 kmartinez@klnb.com | 703-334-5629

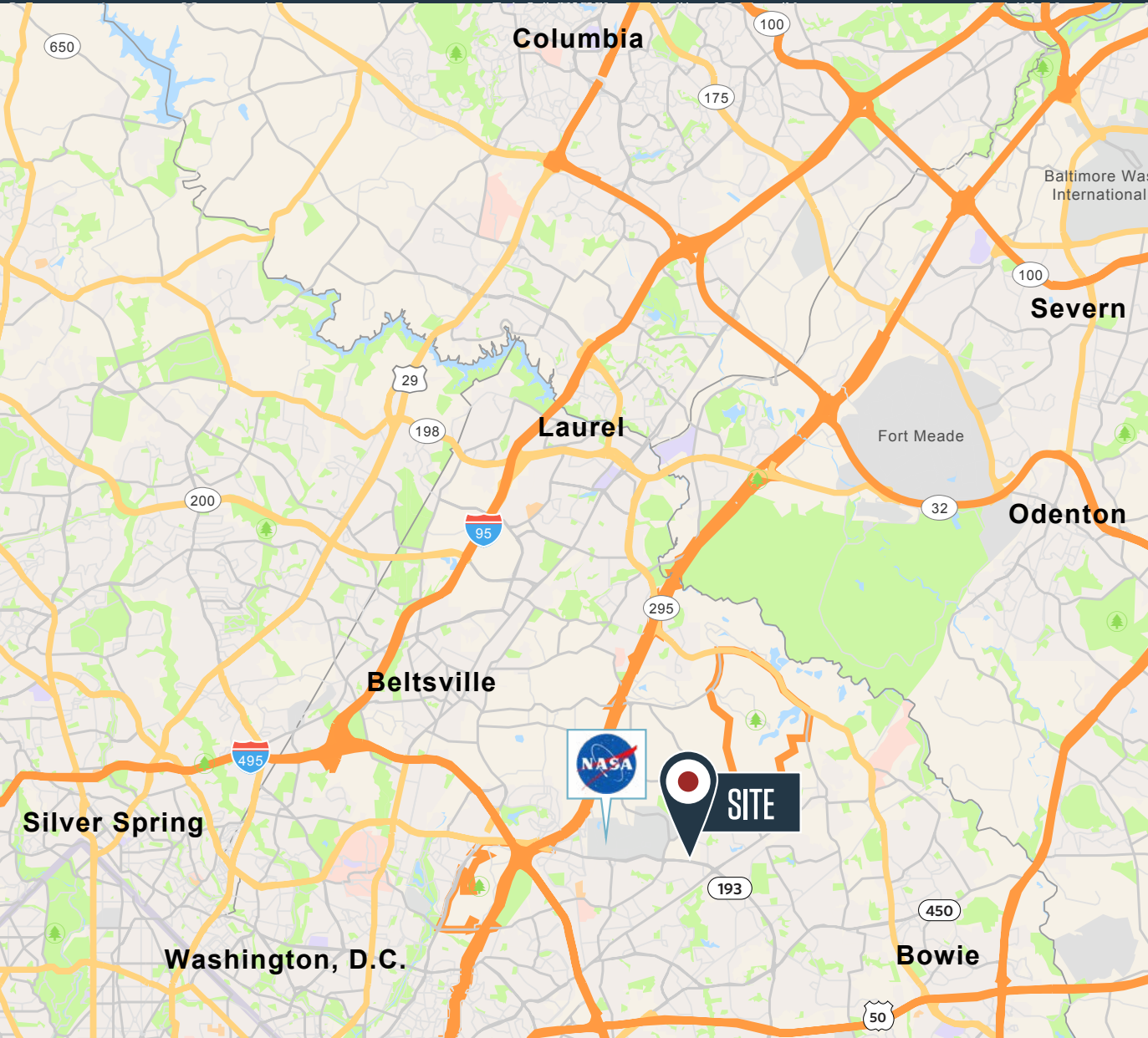


klnb.com

# LOCATION

# MARYLAND CORPORATE CENTER

7404 EXECUTIVE PLACE, LANHAM, MD 20706, PRINCE GEORGE'S COUNTY



## AVAILABLE SPACE

**Suite 300: 8,099 RSF**

## BUILDING FEATURES

- Lease Rate: \$18.95 FS
- 77,000 Rentable square feet
- 4 stories
- 2.73 acres
- Zoned I-1
- 1 mile from NASA / Goddard Space Flight Center
- 3.5 parking spaces per 1,000 square feet
- Transportation to Greenbelt Metro & PG County bus service (TheBus)
- Easy access to Baltimore-Washington Parkway (MD Rt. 295) and Capital Beltway (I-495)
- On-site shared conference center

**KEN FELLOWS**

kfellows@klnb.com | 301-222-0210

**ROB PUGH**

rpugh@klnb.com | 301-222-0211

**KEIRY MARTINEZ**

kmartinez@klnb.com | 703-334-5629



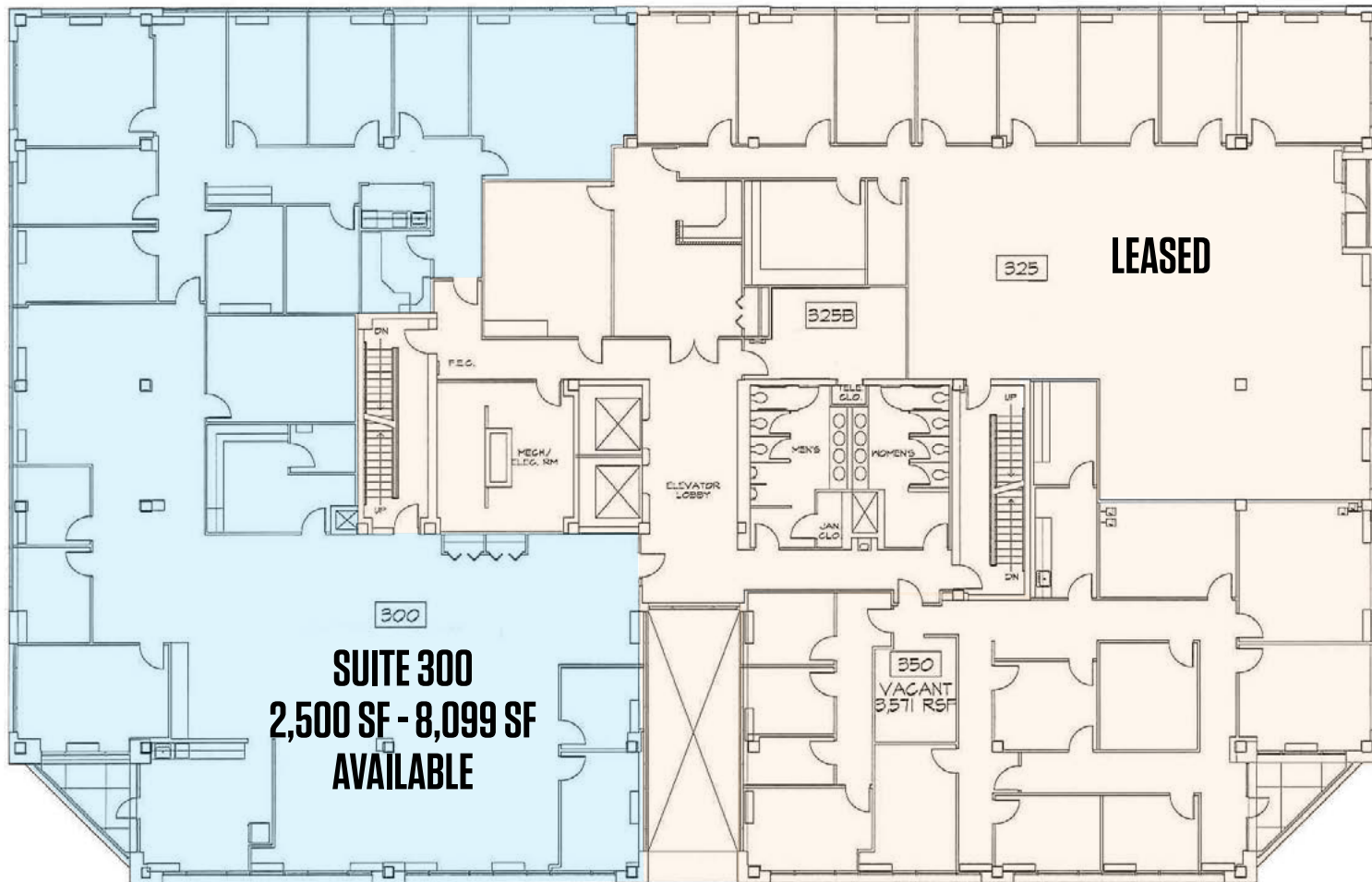
**klnb.com**

# FLOOR PLAN

# MARYLAND CORPORATE CENTER

7404 EXECUTIVE PLACE, LANHAM, MD 20706, PRINCE GEORGE'S COUNTY

## 3<sup>RD</sup> FLOOR PLAN



**KEN FELLOWS**  
kfellows@klnb.com | 301-222-0210

**ROB PUGH**  
rpugh@klnb.com | 301-222-0211

**KEIRY MARTINEZ**  
kmartinez@klnb.com | 703-334-5629



**klnb.com**

# PHOTOS

# MARYLAND CORPORATE CENTER

7404 EXECUTIVE PLACE, LANHAM, MD 20706, PRINCE GEORGE'S COUNTY



**KEN FELLOWS**  
kfellows@klnb.com | 301-222-0210

**ROB PUGH**  
rpugh@klnb.com | 301-222-0211

**KEIRY MARTINEZ**  
kmartinez@klnb.com | 703-334-5629



**klnb.com**

## FOR MORE INFORMATION, PLEASE CONTACT:

**KEN FELLOWS**

kfellows@kInb.com

301-222-0210

**ROB PUGH**

rpugh@kInb.com

301-222-0211

**KEIRY MARTINEZ**

kmartinez@kInb.com

703-334-5629

1130 Connecticut Ave, NW, Suite 600, Washington, DC 20036

.....

**kInb.com**



[instagram.com/kInbcre](https://www.instagram.com/kInbcre)



[linkedin.com/company/kInb](https://www.linkedin.com/company/kInb)



[facebook.com/KLNBCRE](https://www.facebook.com/KLNBCRE)

**CLICK TO VIEW PROPERTY WEBSITE**