



BUILDING NOTES

- Freestanding 14,000 SF, 2 story building
- Situated on .95 acres
- Ideal single user building
- Flexible C-1 zoning (Fairfax County)
- Well suited for Day Care, Schools and Medical Users
- On-site surface parking
- Available immediately

PROXIMITY

- | | | | |
|---|---------|---|----------|
| I-66 | 2.7 mi. | Downtown D.C. | 13.4 mi. |
| I-495 | 1.6 mi. | Washington Dulles International Airport | 14.5 mi. |
| Dulles Toll Rd. | 1.8 mi. | Ronald Reagan Washington National Airport | 15.5 mi. |
| Tysons Corner Center & Metro Station. | 1.2 mi. | | |



1912 WOODFORD RD

VIENNA, VIRGINIA 22182

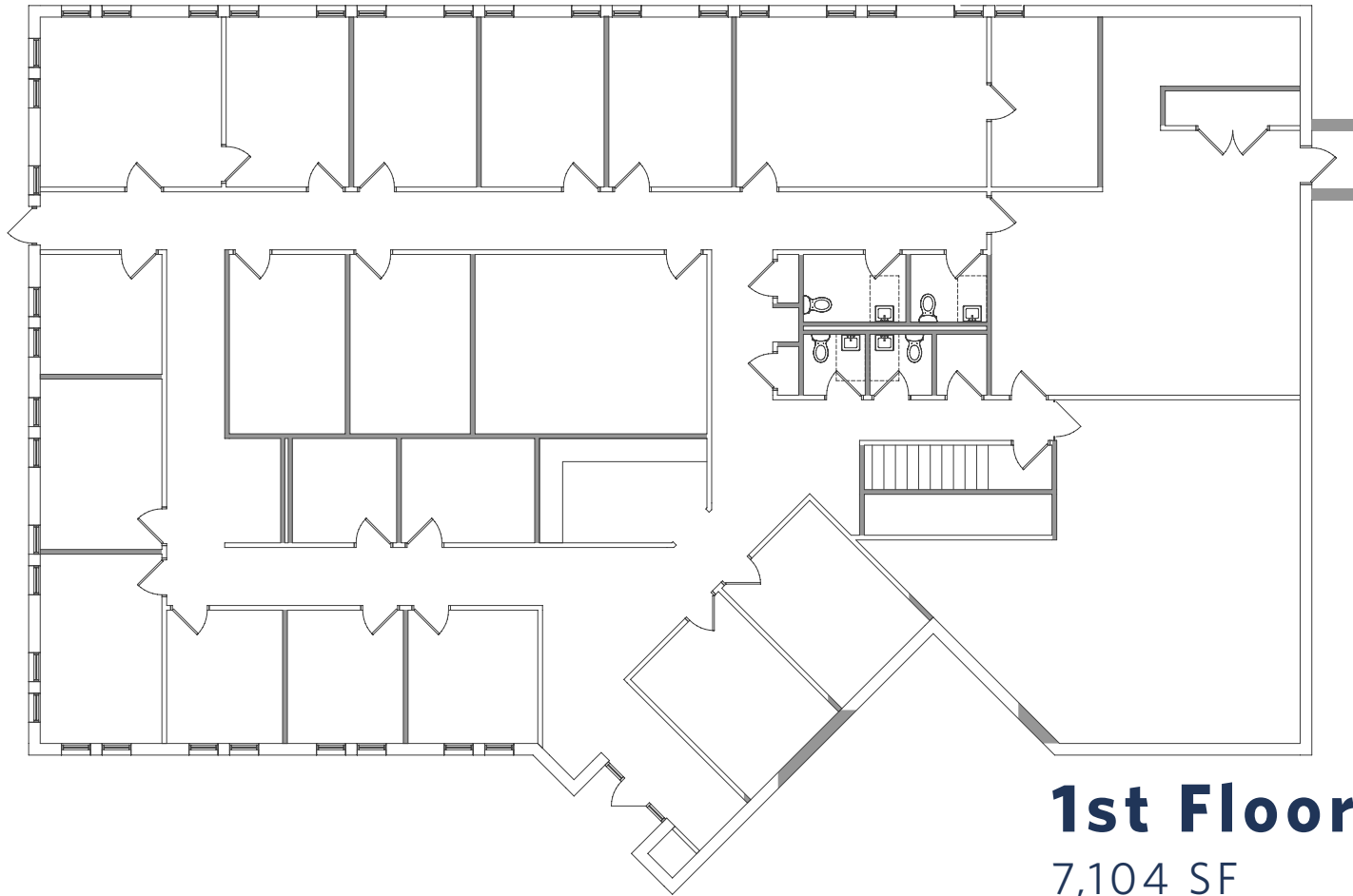


Scott Rabin
srabin@klnb.com
703-334-5610

8065 Leesburg Pike, Suite 700 Tysons, VA 22182
klnb.com







1st Floor

7,104 SF



2nd Floor

7,104 SF



1912 WOODFORD RD

VIENNA, VIRGINIA 22182

CLICK TO VIEW PROPERTY WEBSITE

For More Information, Please Contact:

Scott Rabin

srabin@klnb.com


703-334-5610

8065 Leesburg Pike, Suite 700

Tysons, VA 22182

klnb.com

 facebook.com/KLNBCRE

 [@KLNBCRE](https://twitter.com/KLNBCRE)

 linkedin.com/company/klnb

 instagram.com/klnbcre

While we have no reason to doubt the accuracy of any of the information supplied, we cannot, and do not, guarantee its accuracy. All information should be independently verified prior to a purchase or lease of the property. We are not responsible for errors, omissions, misuse, or misinterpretation of information contained herein and make no warranty of any kind, express or implied, with respect to the property or any other matters.

