

HALE CENTER

8501 Colesville Road, Silver Spring, MD 20910
Montgomery County



OFFICE FOR LEASE

AVAILABILITY:

Suite 210	2,538 SF
Suite 215	2,476 SF
Total Contiguous	5,014 SF

HIGHLIGHTS:

- Immediate Occupancy
- Exceptional small office opportunity in Downtown Silver Spring
- One block to the Silver Spring Metro
- Surrounded by walkable amenities
- Close proximity to Capital Beltway

Marc Tasker, CCIM, SIOR
mtasker@klnb.com
703-268-2735

Keenan Woofter
kwoofter@klnb.com
703-268-2744

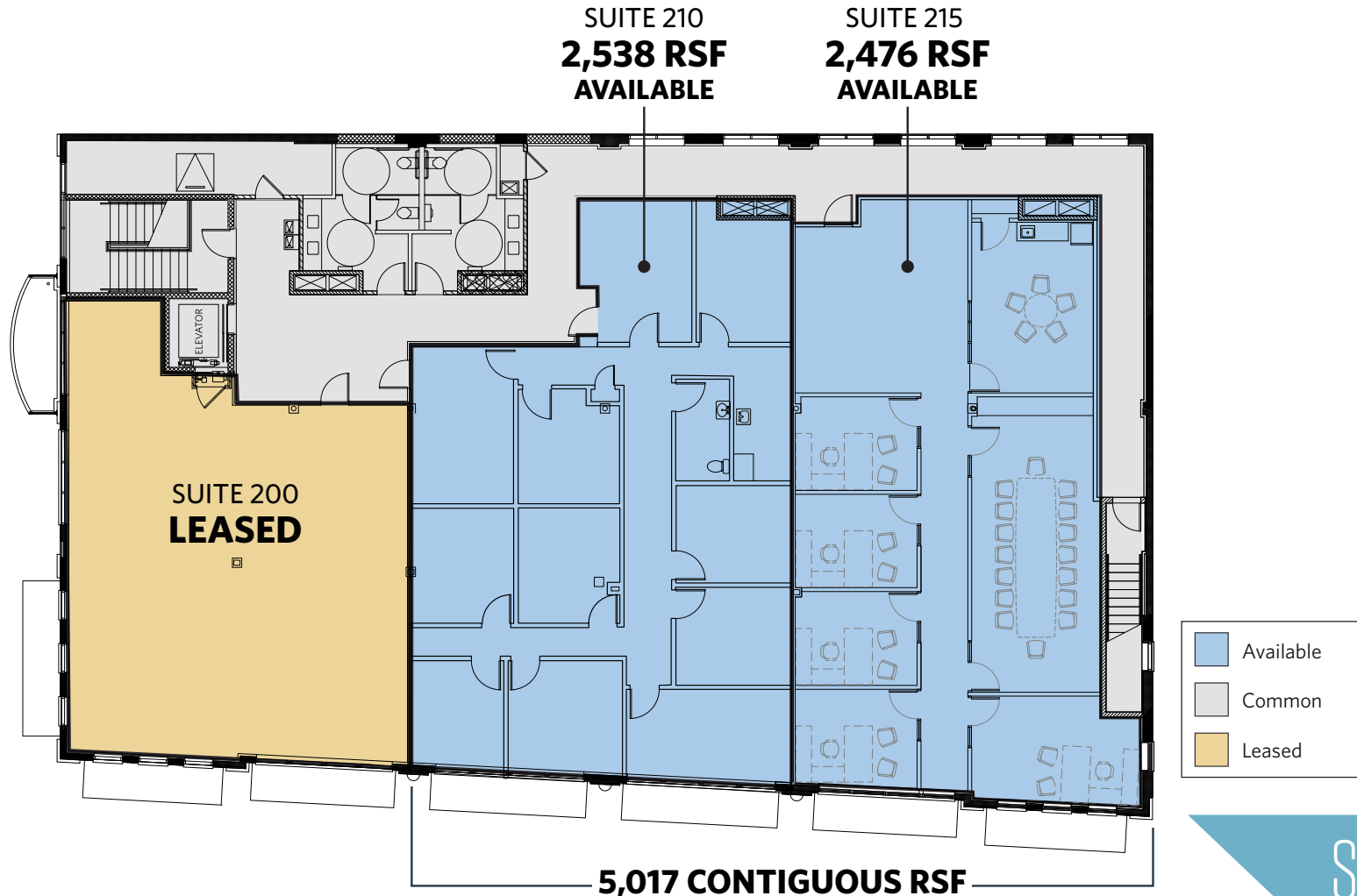
8065 Leesburg Pike, Suite 700
Tysons, VA 22182
klnb.com

NAIklnb

HALE CENTER

8501 Colesville Road, Silver Spring, MD 20910
Montgomery County

Suite 210-215 | 2,476-5,014 RSF



SITE PLAN

Marc Tasker, CCIM, SIOR
mtasker@klnb.com
703-268-2735

Keenan Woofter
kwoofter@klnb.com
703-268-2744

8065 Leesburg Pike, Suite 700
Tysons, VA 22182
klnb.com



HALE CENTER

8501 Colesville Road, Silver Spring, MD 20910
Montgomery County



Marc Tasker, CCIM, SIOR
mtasker@klnb.com
703-268-2735

Keenan Woofter
kwoofter@klnb.com
703-268-2744

8065 Leesburg Pike, Suite 700
Tysons, VA 22182
klnb.com



HALE CENTER

8501 Colesville Road, Silver Spring, MD 20910
Montgomery County

[CLICK TO VIEW PROPERTY WEBSITE](#)

For More Information, Please Contact:

Marc Tasker, CCIM, SIOR
mtasker@klnb.com
703-268-2735

Keenan Woofter
kwoofter@klnb.com
703-268-2744

8065 Leesburg Pike, Suite 700
Tysons, VA 22182

klnb.com



[instagram.com/klnbcre](https://www.instagram.com/klnbcre)



[linkedin.com/company/klnb](https://www.linkedin.com/company/klnb)



[facebook.com/KLNBCRE](https://www.facebook.com/KLNBCRE)

While we have no reason to doubt the accuracy of any of the information supplied, we cannot, and do not, guarantee its accuracy. All information should be independently verified prior to a purchase or lease of the property. We are not responsible for errors, omissions, misuse, or misinterpretation of information contained herein and make no warranty of any kind, express or implied, with respect to the property or any other matters.

NAIklnb